

Converting Colors

YUV(158.4770, -6.6442,
31.1537)

Have a look what the booklet for
YUV(158.4770, -6.6442, 31.1537)
contains.

YUV(158.4770, -6.6442, 31.1537)	3
<i>Conversions</i>	4
<i>Details</i>	6
<i>Harmonies</i>	12
<i>Previews</i>	24
<i>Color Blindness Simulation</i>	28
<i>CSS Examples</i>	31

Color

**YUV(158.4770, -6.6442,
31.1537)**

Conversions

Conversions Part 1

Format	Color
Hex	C28F91
RGB	194, 143, 145
RGB Percent	76%, 56%, 57%
CMY	0.2392, 0.4392, 0.4314
CMYK	0.00, 0.26, 0.25, 0.24
HSL	358°, 29%, 66%
HSV	358°, 26%, 76%
XYZ	37.1814, 33.1586, 31.2286
YIQ	158.4770, 29.7540, 11.4340

Conversions

Conversions Part 2

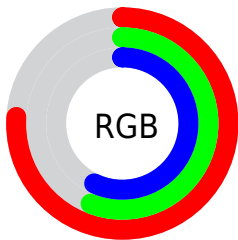
Format	Color
RYB	194, 143, 145
Decimal	12750737
CIELab	64.29, 19.60, 6.53
CIELCh	64, 20.665, 18.435
Yxy	33.1586, 0.3661, 0.3265
Android (android.graphics.Color)	4290940817 (0xFFC28F91)
YUV	158.4770, -6.6442, 31.1537
Hunter-Lab	57.5835, 14.4856, 8.1543

Details

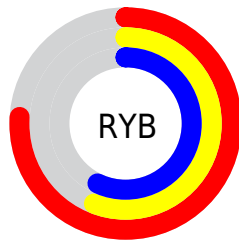
The YUV color **158.4770, -6.6442, 31.1537** is a light color, and the websafe version is hex **CC9999**. A complement of this color would be **178.5230, 6.6442, -31.1537**, and the grayscale version is **159.0000, 0.0000, 0.0000**.

A 20% lighter version of the original color is **213.3740, -7.0864, 32.9980**, and **106.3950, -5.6177, 28.5946** is the 20% darker color. If you saturate the color by 10%, you get **145.1580, -9.4449, 42.8344**, and if you desaturate by 10%, it is **171.7960, -3.8434, 19.4729**.

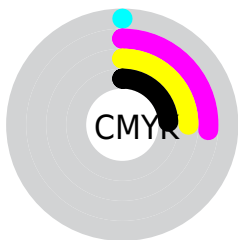
Distribution



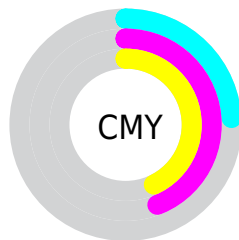
- Red (76%)
- Green (56%)
- Blue (57%)



- Red (76%)
- Yellow (56%)
- Blue (57%)



- Cyan (0%)
- Magenta (26%)
- Yellow (25%)
- Black (24%)



- Cyan (24%)
- Magenta (44%)
- Yellow (43%)

Brightness & Saturation Gradients

These gradients show how the YUV color 158.4770, -6.6442, 31.1537 changes by changing the brightness by 10 percent. The first figure shows a shift by +10% for each color and the second figure -10%.

Similar to the brightness gradients but the following saturation gradients show a change of the YUV color 158.4770, -6.6442, 31.1537 by changing the saturation by 10% instead.

 158.4770, -6.6442,
31.1537


 158.4770, -6.6442,
31.1537


255.0000, 0.0000,
0.0000

 131.8790, -6.3493,
29.9241

 213.3740, -7.0864,
32.9980


 106.3950, -5.6177,
28.5946


 234.1980, -3.5486,
18.2434

 81.7970, -5.3229,
27.3650

254.4130, 0.2894,
0.5148

 58.9000, -4.8807,
25.5207

 36.1170, -4.0017,
23.5764

 12.3730, -5.6069,
25.1059

 0.0000, 0.0000,

0.0000

■ 158.4770, -6.6442,
31.1537

■ 158.4770, -6.6442,
31.1537

■ 145.1580, -9.4449,
42.8344

■ 171.7960, -3.8434,
19.4729

■ 131.3660,
-11.5194, 54.9300

■ 185.5880, -1.7689,
7.3773

■ 118.0470,
-14.3202, 66.6108

■ 198.9070, 1.0318,
-4.3034

■ 104.1410,
-16.8315, 78.8063

■ 212.8130, 3.5432,
-16.4990

■ 90.9360, -19.1954,
90.3871

■ 226.0180, 5.9071,
-28.0798

■ 77.6170, -21.9962,
102.0679

■ 236.7610, 8.9918,
-37.5014

■ 63.8250, -24.0707,
114.1635

■ 58.9180, -25.1026,
118.4669

Harmonies

Analogous

The Analogous color harmony consists of three colors that are next to each other on the color wheel.



158.8490, 2.5394, 25.5654



158.4770, -6.6442, 31.1537



156.9190, -13.7641, 28.1350

Triad

The Triadic color harmony groups three colors that are evenly spaced from another and form a triangle on the color wheel.



158.4770, -6.6442, 31.1537



151.5780, -10.1450, -12.7849



153.0690, 18.7000, -24.6165

Complementary

The Complementary color scheme is a pair of colors which are on the opposite of each other on the color wheel.



158.4770, -6.6442, 31.1537



178.5230, 6.6442, -31.1537

Split Complementary

Split-complementary colors differ from the complementary color scheme. The scheme consists of three colors, the original color and two neighbors of the complement color.



149.1230, 16.7014, -36.9419



158.4770, -6.6442, 31.1537



149.2970, -0.6394, -28.3245

Square

The Square scheme is like the rectangle color scheme, but the four colors are evenly spaced on the color wheel.



158.4770, -6.6442, 31.1537



153.7820, -16.1615, 3.6992



147.8750, 9.4286, -37.6014



156.7230, 16.8986, -6.7731

Rectangle

The Rectangle color scheme consists of four colors that form a rectangle on the color wheel.



158.4770, -6.6442, 31.1537



156.3760, -16.9474, 22.4722



147.8750, 9.4286, -37.6014



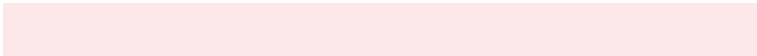
151.4490, 19.0056, -29.3348

Sweetspot

The Sweet Spot groups the original color and five complimentary colors.



158.4770, -6.6442, 31.1537



238.0940, -2.5113, 12.1956



163.1660, 15.2012, 24.4104



118.8870, -1.9163, 7.9921



0.0000, 0.0000, 0.0000



128.0000, 0.0000, 0.0000

Same Dimension

The Same Dimension uses a secret algorithm to generate beautiful new colors.



158.4770, -6.6442, 31.1537



196.2620, -10.4822, 48.8822



171.7500, -14.1737, 19.5133



90.1040, -1.0373, 6.0478



48.8230, -21.1117, 98.3792



9.9810, -4.4276, 20.1877

Inverse Universe

The Inverse Universe completely reimagines the original color for something new.



158.4770, -6.6442, 31.1537



196.2620, -10.4822, 48.8822



165.2500, 14.1738, -19.5132



90.1040, -1.0373, 6.0478



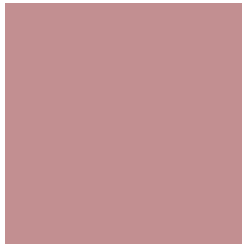
48.8230, -21.1117, 98.3792



9.9810, -4.4276, 20.1877

Previews

White Background



This preview shows how the YUV color 158.4770, -6.6442, 31.1537 looks on a white background.

Color Contrast Check

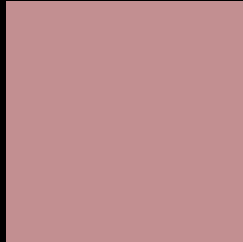
Large Text (above 18pt) WCAG AA × Fail

Any Text WCAG AA × Fail

Large Text (above 18pt) WCAG AAA × Fail

Any Text WCAG AAA × Fail

Black Background



This preview shows how the YUV color 158.4770, -6.6442, 31.1537 looks on a black background.

Color Contrast Check

Large Text (above 18pt) WCAG AA ✓ Pass

Any Text WCAG AA ✓ Pass

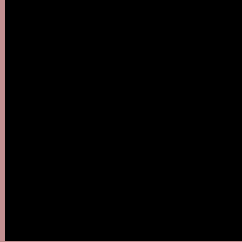
Large Text (above 18pt) WCAG AAA ✓ Pass

Any Text WCAG AAA ✓ Pass

If you want to check with other color combinations, try the [Color Contrast Checker](#).

YUV 158.4770, -6.6442, 31.1537

Background



This preview shows how black text looks on a background with the YUV color 158.4770, -6.6442, 31.1537.



This preview shows how white text looks on a background with the YUV color 158.4770, -6.6442,

Color Blindness Simulation

Color vision deficiency is a very complex topic, and I could not describe the different causes any better than Wikipedia does, so if you want to learn more, you should check out their [article about color blindness](#).

Dichromacy



Original Color

158.4770, -6.6442, 31.1537

Protanopia

156.1530, -2.0474, 3.3738

Deuteranopia

157.6770, -6.7428, 16.0693



Tritanopia

159.1010, -3.0078, 31.4834

Trichromacy



Original Color

158.4770, -6.6442, 31.1537

Protanomaly

157.0510, -3.9691, 13.1103

Deuteranomaly

158.0090, -6.9064, 21.9171

Tritanomaly

158.7590, -4.3182, 31.7834

Monochromacy



Original Color

158.4770, -6.6442, 31.1537

Achromatopsia

158.0000, 0.0000, 0.0000

Achromatomaly

158.3820, -2.6533, 11.0660

CSS Examples

Text

The CSS property to change the color of the text to YUV 158.4770, -6.6442, 31.1537 is called "color". The color property can be set on classes, ids or directly on the HTML element.

This example shows how text in the color `rgb(194, 143, 145)` looks like.

```
.text, #text, p{  
    color:rgb(194, 143, 145)  
}
```

If you want to add a text shadow in that color use the text-shadow property, you can generate a text shadow directly with our [CSS Text Shadow Generator](#).

Here you see how black text with a 4 pixel rgb(194, 143, 145) colored shadow looks like.

```
.shadow{ text-shadow: 4px 4px 2px rgb(194, 143, 145) }
```

Border

The CSS property to change the border of an element to YUV 158.4770, -6.6442, 31.1537 is called "border". The border property can be set on classes, ids or directly on the HTML element.

This example shows the color as border, it can be applied via the CSS property "border" or "border-color".

```
.border, #border, table{ border:4px solid rgb(194, 143, 145) }
```


If only the border color should be changed use the property `border-color`.

```
.border{ border-color:rgb(194, 143, 145) }
```

If you want to add a box shadow in that color use:

Here you see how a box with a 4 pixel `rgb(194, 143, 145)` colored shadow looks like.

```
.boxshadow{ -moz-box-shadow:4px 4px 4px  
4px rgb(194, 143, 145); -webkit-box-  
shadow:4px 4px 4px 4px rgb(194, 143, 145);  
box-shadow:4px 4px 4px 4px rgb(194, 143,  
145) }
```

Background

The CSS property to change the background color of an element to YUV 158.4770, -6.6442, 31.1537 is called "background". The background property can be set on classes, ids or directly on the HTML element.

```
.background, #background, body{  
background: rgb(194, 143, 145) }
```

If only the background color should be changed can be used:

```
.background{ background-color: rgb(194,  
143, 145) }
```

This example shows the color as background, it is applied via the CSS property "background".

To optimize and compress your CSS code, you can use our [online CSS compressor and optimizer](#) based on csstidy. If you want to create a linear or radial gradient as background or border, check our [CSS Gradient Generator](#).

Hey! You found this booklet interesting? Support Converting Colors with the new Membership Option!

The pro membership hides all ads, plus gives you double the colors in the color bucket, and more awesome pro features!

[Learn more, Memberships starting at \\$2.50/m!](#)

**Follow me
on Twitter!**

@ConvertingColor