

Converting Colors

YUV(158.4860, -20.4526,
26.7608)

Have a look what the booklet for
YUV(158.4860, -20.4526, 26.7608)
contains.

YUV(158.4860, -20.4526, 26.7608)	3
<i>Conversions</i>	4
<i>Details</i>	6
<i>Harmonies</i>	12
<i>Previews</i>	24
<i>Color Blindness Simulation</i>	28
<i>CSS Examples</i>	31

Color

**YUV(158.4860, -20.4526,
26.7608)**

Conversions

Conversions Part 1

Format	Color
Hex	BD9775
RGB	189, 151, 117
RGB Percent	74%, 59%, 46%
CMY	0.2588, 0.4078, 0.5412
CMYK	0.00, 0.20, 0.38, 0.26
HSL	28°, 35%, 60%
HSV	28°, 38%, 74%
XYZ	35.2638, 34.2364, 21.5793
YIQ	158.4860, 33.5620, -2.5180

Conversions

Conversions Part 2

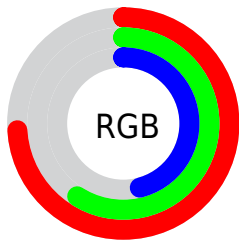
Format	Color
R _Y B	189, 181, 117
Decimal	12425077
CIE Lab	65.15, 9.50, 23.31
CIE LCh	65, 25.168, 67.831
Yxy	34.2364, 0.3872, 0.3759
Android (android.graphics.Color)	4290615157 (0xFFBD9775)
YUV	158.4860, -20.4526, 26.7608
Hunter-Lab	58.5119, 5.1821, 19.0920

Details

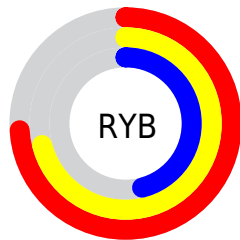
The YUV color $158.4860, -20.4526, 26.7608$ is a light color, and the websafe version is hex $CC9966$. A complement of this color would be $147.5140, 20.4526, -26.7608$, and the grayscale version is $159.0000, 0.0000, 0.0000$.

A 20% lighter version of the original color is $213.1550, -21.7684, 28.8051$, and $106.5180, -18.9894, 24.1017$ is the 20% darker color. If you saturate the color by 10%, you get $150.4500, -25.8578, 33.8084$, and if you desaturate by 10%, it is $166.5220, -15.0473, 19.7132$.

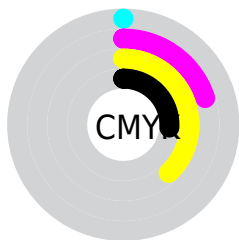
Distribution



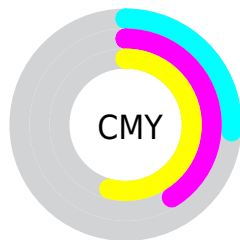
- Red (74%)
- Green (59%)
- Blue (46%)



- Red (74%)
- Yellow (71%)
- Blue (46%)



- Cyan (0%)
- Magenta (20%)
- Yellow (38%)
- Black (26%)



- Cyan (26%)
- Magenta (41%)
- Yellow (54%)

Brightness & Saturation Gradients

These gradients show how the YUV color 158.4860, -20.4526, 26.7608 changes by changing the brightness by 10 percent. The first figure shows a shift by +10% for each color and the second figure -10%.

Similar to the brightness gradients but the following saturation gradients show a change of the YUV color 158.4860, -20.4526, 26.7608 by changing the saturation by 10% instead.

■ 158.4860,
-20.4526, 26.7608

■ 158.4860,
-20.4526, 26.7608

255.0000, 0.0000,
0.0000

■ 132.0020,
-19.7210, 25.4312

■ 213.1550,
-21.7684, 28.8051

■ 106.5180,
-18.9894, 24.1017

■ 235.4740,
-18.9677, 17.1243

■ 82.1480, -17.8210,
22.6722

■ 251.5800,
-13.1039, 2.9993

■ 58.9520, -17.2313,
20.2131

254.7720, -0.8736,
0.2000

■ 36.1260, -17.8101,
19.1835

■ 16.6230, -8.1951,
15.2396

■ 0.0000, 0.0000,

0.0000

■ 158.4860,
-20.4526, 26.7608

■ 158.4860,
-20.4526, 26.7608

■ 150.4500,
-25.8578, 33.8084

■ 166.5220,
-15.0473, 19.7132

■ 142.4140,
-31.2631, 40.8559

■ 174.5580, -9.6421,
12.6656

■ 134.3780,
-36.6684, 47.9035

■ 182.5940, -4.2368,
5.6181

■ 126.3420,
-42.0736, 54.9511

■ 190.6300, 1.1684,
-1.4295

■ 118.3060,
-47.4789, 61.9986

■ 198.6660, 6.5737,
-8.4771

■ 110.3840,
-52.4473, 68.9462

■ 206.5880, 11.5421,
-15.4247

■ 108.7540,
-53.6157, 70.3757

■ 214.6240, 16.9474,
-22.4722

■ 221.1780, 16.6742,
-28.2201

■ 227.0480, 13.7803,
-33.3681

Harmonies

Analogous

The Analogous color harmony consists of three colors that are next to each other on the color wheel.



159.9740, -13.7912, 36.8568



158.4860, -20.4526, 26.7608



156.7460, -21.5668, 10.7468

Triad

The Triadic color harmony groups three colors that are evenly spaced from another and form a triangle on the color wheel.



158.4860, -20.4526, 26.7608



147.9620, 7.4137, -44.6937



160.6970, 16.4184, 7.2817

Complementary

The Complementary color scheme is a pair of colors which are on the opposite of each other on the color wheel.



158.4860, -20.4526, 26.7608



147.5140, 20.4526, -26.7608

Split Complementary

Split-complementary colors differ from the complementary color scheme. The scheme consists of three colors, the original color and two neighbors of the complement color.



157.0360, 22.1673, -16.6946



158.4860, -20.4526, 26.7608



147.5020, 18.4865, -49.5523

Square

The Square scheme is like the rectangle color scheme, but the four colors are evenly spaced on the color wheel.



158.4860, -20.4526, 26.7608



150.4450, -5.1494, -28.4543



151.8330, 23.2533, -38.4415



162.0000, 6.9020, 26.3100

Rectangle

The Rectangle color scheme consists of four colors that form a rectangle on the color wheel.



158.4860, -20.4526, 26.7608



154.5810, -18.0344, -2.2635



151.8330, 23.2533, -38.4415



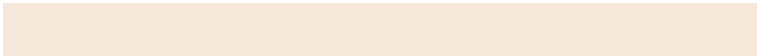
159.9240, 18.7715, -0.8103

Sweetspot

The Sweet Spot groups the original color and five complimentary colors.



158.4860, -20.4526, 26.7608



233.7040, -7.7421, 9.9066



142.8600, 5.9850, 40.4648



115.4800, -4.6736, 5.7180



250.0000, 0.0000, 0.0000



122.0000, 0.0000, 0.0000

Same Dimension

The Same Dimension uses a secret algorithm to generate beautiful new colors.



158.4860, -20.4526, 26.7608



196.8980, -31.9947, 42.1855



179.6180, -30.8707, 8.2280



90.0390, -2.4842, 3.4738



91.2670, -44.9946, 58.5248



17.4870, -8.6211, 11.8509

Inverse Universe

The Inverse Universe completely reimagines the original color for something new.



147.5140, 20.4526, -26.7608



180.1020, 31.9947, -42.1855



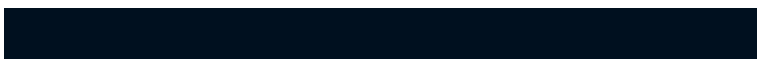
126.3820, 30.8707, -8.2280



88.9610, 2.4842, -3.4738



66.7330, 44.9946, -58.5248



12.9260, 8.9105, -11.3361

Previews

White Background



This preview shows how the YUV color 158.4860, -20.4526, 26.7608 looks on a white background.

Color Contrast Check

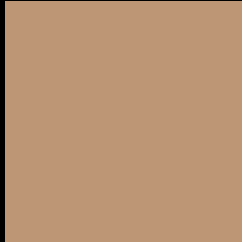
Large Text (above 18pt) WCAG AA × Fail

Any Text WCAG AA × Fail

Large Text (above 18pt) WCAG AAA × Fail

Any Text WCAG AAA × Fail

Black Background



This preview shows how the YUV color 158.4860, -20.4526, 26.7608 looks on a black background.

Color Contrast Check

Large Text (above 18pt) WCAG AA ✓ Pass

Any Text WCAG AA ✓ Pass

Large Text (above 18pt) WCAG AAA ✓ Pass

Any Text WCAG AAA ✓ Pass

If you want to check with other color combinations, try the [Color Contrast Checker](#).

YUV 158.4860, -20.4526, 26.7608

Background



This preview shows how black text looks on a background with the YUV color 158.4860, -20.4526, 26.7608.



This preview shows how white text looks on a background with the YUV color 158.4860, -20.4526, 26.7608.

Color Blindness Simulation

Color vision deficiency is a very complex topic, and I could not describe the different causes any better than Wikipedia does, so if you want to learn more, you should check out their [article about color blindness](#).

Dichromacy



Original Color

158.4860, -20.4526, 26.7608

Protanopia

156.9570, -18.2198, 10.5617

Deuteranopia

158.4750, -20.4472, 25.0164



Tritanopia

161.3070, -2.1234, 27.7948

Trichromacy



Original Color

158.4860, -20.4526, 26.7608

Protanomaly

157.1750, -18.8203, 16.5095

Deuteranomaly

158.7740, -20.5946, 25.6312

Tritanomaly

160.4720, -9.1067, 27.6501

Monochromacy



Original Color

158.4860, -20.4526, 26.7608

Achromatopsia

158.0000, 0.0000, 0.0000

Achromatomaly

157.8180, -7.3053, 9.8066

CSS Examples

Text

The CSS property to change the color of the text to YUV 158.4860, -20.4526, 26.7608 is called "color". The color property can be set on classes, ids or directly on the HTML element.

This example shows how text in the color `rgb(189, 151, 117)` looks like.

```
.text, #text, p{  
    color:rgb(189, 151, 117)  
}
```

If you want to add a text shadow in that color use the text-shadow property, you can generate a text shadow directly with our [CSS Text Shadow Generator](#).

Here you see how black text with a 4 pixel rgb(189, 151, 117) colored shadow looks like.

```
.shadow{ text-shadow: 4px 4px 2px rgb(189, 151, 117) }
```

Border

The CSS property to change the border of an element to YUV 158.4860, -20.4526, 26.7608 is called "border".

The border property can be set on classes, ids or directly on the HTML element.

This example shows the color as border, it can be applied via the CSS property "border" or "border-color".

```
.border, #border, table{ border:4px solid rgb(189, 151, 117) }
```


If only the border color should be changed use the property `border-color`.

```
.border{ border-color:rgb(189, 151, 117) }
```

If you want to add a box shadow in that color use:

Here you see how a box with a 4 pixel `rgb(189, 151, 117)` colored shadow looks like.

```
.boxshadow{ -moz-box-shadow:4px 4px 4px  
4px rgb(189, 151, 117); -webkit-box-  
shadow:4px 4px 4px 4px rgb(189, 151, 117);  
box-shadow:4px 4px 4px 4px rgb(189, 151,  
117) }
```

Background

The CSS property to change the background color of an element to YUV 158.4860, -20.4526, 26.7608 is called "background". The background property can be set on classes, ids or directly on the HTML element.

```
.background, #background, body{  
background: rgb(189, 151, 117) }
```

If only the background color should be changed can be used:

```
.background{ background-color: rgb(189,  
151, 117) }
```

This example shows the color as background, it is applied via the CSS property "background".

To optimize and compress your CSS code, you can use our [online CSS compressor and optimizer](#) based on csstidy. If you want to create a linear or radial gradient as background or border, check our [CSS Gradient Generator](#).

Hey! You found this booklet interesting? Support Converting Colors with the new Membership Option!

The pro membership hides all ads, plus gives you double the colors in the color bucket, and more awesome pro features!

[Learn more, Memberships starting at \\$2.50/m!](#)

**Follow me
on Twitter!**

@ConvertingColor