

Converting Colors

YUV(158.5160, -12.5794,
21.4725)

Have a look what the booklet for
YUV(158.5160, -12.5794, 21.4725)
contains.

YUV(158.5160, -12.5794, 21.4725)	3
<i>Conversions</i>	4
<i>Details</i>	6
<i>Harmonies</i>	12
<i>Previews</i>	24
<i>Color Blindness Simulation</i>	28
<i>CSS Examples</i>	31

Color

**YUV(158.5160, -12.5794,
21.4725)**

Conversions

Conversions Part 1

Format	Color
Hex	B79785
RGB	183, 151, 133
RGB Percent	72%, 59%, 52%
CMY	0.2824, 0.4078, 0.4784
CMYK	0.00, 0.17, 0.27, 0.28
HSL	22°, 26%, 62%
HSV	22°, 27%, 72%
XYZ	34.8287, 33.8940, 26.8968
YIQ	158.5160, 24.8500, 1.1860

Conversions

Conversions Part 2

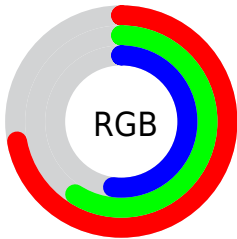
Format	Color
R_{YB}	183, 161, 133
Decimal	12031877
CIELab	64.88, 9.18, 13.96
CIElCh	65, 16.706, 56.653
Yxy	33.8940, 0.3642, 0.3545
Android (android.graphics.Color)	4290221957 (0xFFB79785)
YUV	158.5160, -12.5794, 21.4725
Hunter-Lab	58.2185, 4.9036, 13.3611

Details

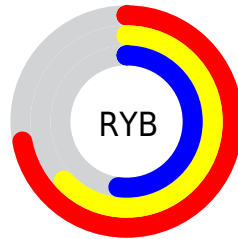
The YUV color $158.5160, -12.5794, 21.4725$ is a light color, and the websafe version is hex $CC9999$. A complement of this color would be $157.4840, 12.5794, -21.4725$, and the grayscale version is $159.0000, 0.0000, 0.0000$.

A 20% lighter version of the original color is $213.2990, -13.4584, 23.4168$, and $106.7330, -11.7004, 19.5282$ is the 20% darker color. If you saturate the color by 10%, you get $149.4200, -16.9691, 29.4497$, and if you desaturate by 10%, it is $167.6120, -8.1897, 13.4953$.

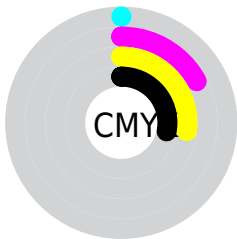
Distribution



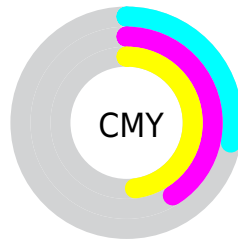
- Red (72%)
- Green (59%)
- Blue (52%)



- Red (72%)
- Yellow (63%)
- Blue (52%)



- Cyan (0%)
- Magenta (17%)
- Yellow (27%)
- Black (28%)



- Cyan (28%)
- Magenta (41%)
- Yellow (48%)

Brightness & Saturation Gradients

These gradients show how the YUV color 158.5160, -12.5794, 21.4725 changes by changing the brightness by 10 percent. The first figure shows a shift by +10% for each color and the second figure -10%.

Similar to the brightness gradients but the following saturation gradients show a change of the YUV color 158.5160, -12.5794, 21.4725 by changing the saturation by 10% instead.

■ 158.5160,
-12.5794, 21.4725

■ 158.5160,
-12.5794, 21.4725

255.0000, 0.0000,
0.0000

■ 132.3310,
-11.9952, 20.7577

■ 213.2990,
-13.4584, 23.4168

■ 106.7330,
-11.7004, 19.5282

■ 237.4120,
-11.5421, 15.4247

■ 82.2490, -10.9688,
18.1986

■ 253.5180, -5.6784,
1.2997

■ 59.0640, -10.3846,
17.4839

■ 37.2810, -9.5055,
15.5396

■ 15.7370, -7.7583,
15.1397

■ 0.0000, 0.0000,

0.0000

■ 158.5160,
-12.5794, 21.4725

■ 158.5160,
-12.5794, 21.4725

■ 149.4200,
-16.9691, 29.4497

■ 167.6120, -8.1897,
13.4953

■ 140.7970,
-22.0849, 37.0120

■ 176.2350, -3.0739,
5.9329

■ 131.7010,
-26.4746, 44.9892

■ 185.3310, 1.3158,
-2.0443

■ 122.6050,
-30.8643, 52.9664

■ 194.4270, 5.7055,
-10.0215

■ 113.5090,
-35.2539, 60.9436

■ 203.6370, 10.5320,
-18.0986

■ 104.8860,
-40.3698, 68.5060

■ 212.1460, 15.2110,
-25.5610

■ 95.7900, -44.7595,
76.4832

■ 220.5580, 16.9799,
-32.9384

■ 93.4590, -46.0753,
78.5275

■ 227.6020, 13.5072,
-39.1160

■ 233.4720, 10.6133,
-44.2639

Harmonies

Analogous

The Analogous color harmony consists of three colors that are next to each other on the color wheel.



159.9170, -7.3541, 25.5058



158.5160, -12.5794, 21.4725



157.2930, -14.4414, 12.0210

Triad

The Triadic color harmony groups three colors that are evenly spaced from another and form a triangle on the color wheel.



158.5160, -12.5794, 21.4725



152.1880, 1.3863, -24.7209



158.6160, 12.5143, -0.5402

Complementary

The Complementary color scheme is a pair of colors which are on the opposite of each other on the color wheel.



158.5160, -12.5794, 21.4725



157.4840, 12.5794, -21.4725

Split Complementary

Split-complementary colors differ from the complementary color scheme. The scheme consists of three colors, the original color and two neighbors of the complement color.



155.9130, 15.3259, -15.7097



158.5160, -12.5794, 21.4725



151.8050, 8.9701, -30.5240

Square

The Square scheme is like the rectangle color scheme, but the four colors are evenly spaced on the color wheel.



158.5160, -12.5794, 21.4725



153.6040, -6.2138, -13.6847



153.2060, 14.1954, -26.4907



160.2110, 6.7980, 12.9700

Rectangle

The Rectangle color scheme consists of four colors that form a rectangle on the color wheel.



158.5160, -12.5794, 21.4725



155.8790, -13.2513, 3.6141



153.2060, 14.1954, -26.4907



157.9250, 13.8410, -6.0732

Sweetspot

The Sweet Spot groups the original color and five complimentary colors.



158.5160, -12.5794, 21.4725



227.7900, -4.8265, 8.0772



151.5980, 6.6072, 27.5396



113.9360, -2.9264, 5.3181



247.0000, 0.0000, 0.0000



120.0000, 0.0000, 0.0000

Same Dimension

The Same Dimension uses a secret algorithm to generate beautiful new colors.



158.5160, -12.5794, 21.4725



198.7580, -19.6007, 33.5382



173.1910, -19.8142, 8.6025



87.4520, -2.1948, 3.9886



79.5160, -39.2014, 67.0765



14.2420, -7.0213, 12.0658

Inverse Universe

The Inverse Universe completely reimagines the original color for something new.



157.4840, 12.5794, -21.4725



197.2420, 19.6007, -33.5382



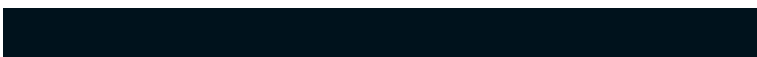
142.8090, 19.8142, -8.6025



86.9610, 2.4842, -3.4738



76.4840, 39.2014, -67.0765



13.7580, 7.0213, -12.0658

Previews

White Background



This preview shows how the YUV color 158.5160, -12.5794, 21.4725 looks on a white background.

Color Contrast Check

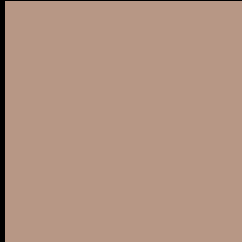
Large Text (above 18pt) WCAG AA × Fail

Any Text WCAG AA × Fail

Large Text (above 18pt) WCAG AAA × Fail

Any Text WCAG AAA × Fail

Black Background



This preview shows how the YUV color 158.5160, -12.5794, 21.4725 looks on a black background.

Color Contrast Check

Large Text (above 18pt) WCAG AA ✓ Pass

Any Text WCAG AA ✓ Pass

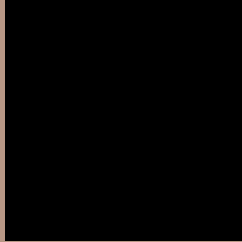
Large Text (above 18pt) WCAG AAA ✓ Pass

Any Text WCAG AAA ✓ Pass

If you want to check with other color combinations, try the [Color Contrast Checker](#).

YUV 158.5160, -12.5794, 21.4725

Background



This preview shows how black text looks on a background with the YUV color 158.5160, -12.5794, 21.4725.



This preview shows how white text looks on a background with the YUV color 158.5160, -12.5794, 21.4725.

21.4725.

Color Blindness Simulation

Color vision deficiency is a very complex topic, and I could not describe the different causes any better than Wikipedia does, so if you want to learn more, you should check out their [article about color blindness](#).

Dichromacy



Original Color

158.5160, -12.5794, 21.4725

Protanopia

156.9980, -10.3520, 7.0178

Deuteranopia

158.8040, -12.7214, 20.3429



Tritanopia

160.0290, -0.5073, 22.7766

Trichromacy



Original Color

158.5160, -12.5794, 21.4725

Protanomaly

157.8030, -11.2419, 12.4508

Deuteranomaly

158.8040, -12.7214, 20.3429

Tritanomaly

159.2910, -4.5805, 22.5468

Monochromacy



Original Color

158.5160, -12.5794, 21.4725

Achromatopsia

159.0000, 0.0000, 0.0000

Achromatomaly

158.9040, -4.3897, 7.9772

CSS Examples

Text

The CSS property to change the color of the text to YUV 158.5160, -12.5794, 21.4725 is called "color". The color property can be set on classes, ids or directly on the HTML element.

This example shows how text in the color `rgb(183, 151, 133)` looks like.

```
.text, #text, p{  
    color:rgb(183, 151, 133)  
}
```

If you want to add a text shadow in that color use the text-shadow property, you can generate a text shadow directly with our [CSS Text Shadow Generator](#).

Here you see how black text with a 4 pixel rgb(183, 151, 133) colored shadow looks like.

```
.shadow{ text-shadow: 4px 4px 2px rgb(183, 151, 133) }
```

Border

The CSS property to change the border of an element to YUV 158.5160, -12.5794, 21.4725 is called "border".

The border property can be set on classes, ids or directly on the HTML element.

This example shows the color as border, it can be applied via the CSS property "border" or "border-color".

```
.border, #border, table{ border:4px solid rgb(183, 151, 133) }
```


If only the border color should be changed use the property `border-color`.

```
.border{ border-color:rgb(183, 151, 133) }
```

If you want to add a box shadow in that color use:

Here you see how a box with a 4 pixel `rgb(183, 151, 133)` colored shadow looks like.

```
.boxshadow{ -moz-box-shadow:4px 4px 4px  
4px rgb(183, 151, 133); -webkit-box-  
shadow:4px 4px 4px 4px rgb(183, 151, 133);  
box-shadow:4px 4px 4px 4px rgb(183, 151,  
133) }
```

Background

The CSS property to change the background color of an element to YUV 158.5160, -12.5794, 21.4725 is called "background". The background property can be set on classes, ids or directly on the HTML element.

```
.background, #background, body{  
background: rgb(183, 151, 133) }
```

If only the background color should be changed can be used:

```
.background{ background-color: rgb(183,  
151, 133) }
```

This example shows the color as background, it is applied via the CSS property "background".

To optimize and compress your CSS code, you can use our [online CSS compressor and optimizer](#) based on csstidy. If you want to create a linear or radial gradient as background or border, check our [CSS Gradient Generator](#).

Hey! You found this booklet interesting? Support Converting Colors with the new Membership Option!

The pro membership hides all ads, plus gives you double the colors in the color bucket, and more awesome pro features!

[Learn more, Memberships starting at \\$2.50/m!](#)

**Follow me
on Twitter!**

@ConvertingColor