

Converting Colors

YUV(158.9590, -4.4168,
16.6990)

Have a look what the booklet for
YUV(158.9590, -4.4168, 16.6990)
contains.

YUV(158.9590, -4.4168, 16.6990)	3
<i>Conversions</i>	4
<i>Details</i>	6
<i>Harmonies</i>	12
<i>Previews</i>	24
<i>Color Blindness Simulation</i>	28
<i>CSS Examples</i>	31

Color

**YUV(158.9590, -4.4168,
16.6990)**

Conversions

Conversions Part 1

Format	Color
Hex	B29796
RGB	178, 151, 150
RGB Percent	70%, 59%, 59%
CMY	0.3020, 0.4078, 0.4118
CMYK	0.00, 0.15, 0.16, 0.30
HSL	2°, 15%, 64%
HSV	2°, 16%, 70%
XYZ	34.9317, 33.8002, 33.5372
YIQ	158.9590, 16.4130, 5.4130

Conversions

Conversions Part 2

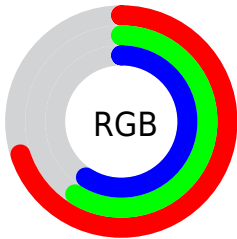
Format	Color
RYB	178, 151, 150
Decimal	11704214
CIELab	64.80, 9.86, 4.25
CIElCh	65, 10.734, 23.317
Yxy	33.8002, 0.3416, 0.3305
Android (android.graphics.Color)	4289894294 (0xFFB29796)
YUV	158.9590, -4.4168, 16.6990
Hunter-Lab	58.1379, 5.5089, 6.4948

Details

The YUV color **158.9590, -4.4168, 16.6990** is a light color, and the websafe version is hex **CC9999**. A complement of this color would be **169.0410, 4.4168, -16.6990**, and the grayscale version is **159.0000, 0.0000, 0.0000**.

A 20% lighter version of the original color is **213.5570, -4.7116, 17.9285**, and **107.3610, -4.1220, 15.4694** is the 20% darker color. If you saturate the color by 10%, you get **146.9280, -7.3595, 27.2501**, and if you desaturate by 10%, it is **170.9900, -1.4741, 6.1478**.

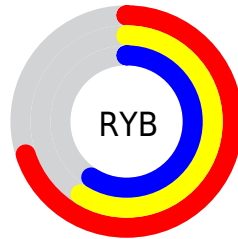
Distribution



Red (70%)

Green (59%)

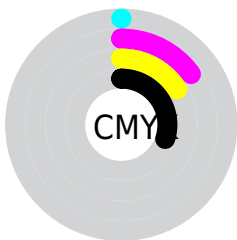
Blue (59%)



Red (70%)

Yellow (59%)

Blue (59%)

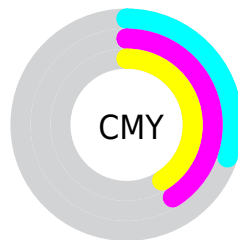


Cyan (0%)

Magenta (15%)

Yellow (16%)

Black (30%)



Cyan (30%)

Magenta (41%)

Yellow (41%)

Brightness & Saturation Gradients

These gradients show how the YUV color 158.9590, -4.4168, 16.6990 changes by changing the brightness by 10 percent. The first figure shows a shift by +10% for each color and the second figure -10%.

Similar to the brightness gradients but the following saturation gradients show a change of the YUV color 158.9590, -4.4168, 16.6990 by changing the saturation by 10% instead.

■ 158.9590, -4.4168,
16.6990

■ 158.9590, -4.4168,
16.6990

255.0000, 0.0000,
0.0000

■ 132.6600, -4.2694,
16.0842

■ 213.5570, -4.7116,
17.9285

■ 107.3610, -4.1220,
15.4694

■ 239.4640, -3.6798,
13.6251

■ 83.0620, -3.9746,
14.8546

■ 59.8770, -3.3904,
14.1399

■ 37.9800, -2.9481,
12.2955

■ 15.7630, -3.8272,
14.2398

■ 0.0000, 0.0000,

0.0000

■ 158.9590, -4.4168,
16.6990

■ 158.9590, -4.4168,
16.6990

■ 146.9280, -7.3595,
27.2501

■ 170.9900, -1.4741,
6.1478

■ 134.8970,
-10.3022, 37.8013

■ 183.0210, 1.4686,
-4.4034

■ 122.9800,
-12.8081, 48.2525

■ 194.9380, 3.9746,
-14.8546

■ 110.3620,
-15.4615, 59.3185

■ 207.5560, 6.6279,
-25.9206

■ 98.3310, -18.4042,
69.8697

■ 219.5870, 9.5706,
-36.4718

■ 86.3000, -21.3469,
80.4209

■ 231.3900, 11.6397,
-46.8230

■ 74.2690, -24.2896,
90.9721

■ 231.9770, 11.3503,
-47.3378

■ 62.3520, -26.7955,
101.4233

■ 56.7440, -27.9748,
106.3415

Harmonies

Analogous

The Analogous color harmony consists of three colors that are next to each other on the color wheel.



159.5010, 0.2460, 14.4696



158.9590, -4.4168, 16.6990



158.3240, -8.0477, 14.6249

Triad

The Triadic color harmony groups three colors that are evenly spaced from another and form a triangle on the color wheel.



158.9590, -4.4168, 16.6990



154.8050, -4.3409, -7.7220



156.7520, 9.4893, -10.3065

Complementary

The Complementary color scheme is a pair of colors which are on the opposite of each other on the color wheel.



158.9590, -4.4168, 16.6990



169.0410, 4.4168, -16.6990

Split Complementary

Split-complementary colors differ from the complementary color scheme. The scheme consists of three colors, the original color and two neighbors of the complement color.



154.7790, 8.4900, -16.4692



158.9590, -4.4168, 16.6990



154.3140, 0.3382, -15.1844

Square

The Square scheme is like the rectangle color scheme, but the four colors are evenly spaced on the color wheel.



158.9590, -4.4168, 16.6990



156.2360, -8.0043, 0.6700



154.1440, 4.8590, -18.5433



157.5790, 8.5886, -1.3848

Rectangle

The Rectangle color scheme consists of four colors that form a rectangle on the color wheel.



158.9590, -4.4168, 16.6990



157.6610, -9.1999, 10.8213



154.1440, 4.8590, -18.5433



156.0290, 9.3527, -13.1804

Sweetspot

The Sweet Spot groups the original color and five complimentary colors.



158.9590, -4.4168, 16.6990



224.1750, -2.0583, 6.8625



161.4500, 7.6662, 14.5144



112.6800, -1.3212, 3.7886



245.0000, 0.0000, 0.0000



117.0000, 0.0000, 0.0000

Same Dimension

The Same Dimension uses a secret algorithm to generate beautiful new colors.



158.9590, -4.4168, 16.6990



202.3300, -7.0647, 26.0206



167.1770, -8.4683, 9.4918



83.2780, -1.6161, 5.0182



48.6820, -24.0002, 91.4869



8.3610, -4.1220, 15.4694

Inverse Universe

The Inverse Universe completely reimagines the original color for something new.



169.0410, 4.4168, -16.6990



217.6700, 7.0647, -26.0206



160.8230, 8.4683, -9.4918



86.3090, 1.3267, -5.5330



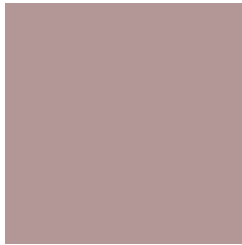
104.3180, 24.0002, -91.4869



17.6390, 4.1220, -15.4694

Previews

White Background



This preview shows how the YUV color 158.9590, -4.4168, 16.6990 looks on a white background.

Color Contrast Check

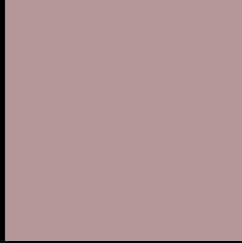
Large Text (above 18pt) WCAG AA × Fail

Any Text WCAG AA × Fail

Large Text (above 18pt) WCAG AAA × Fail

Any Text WCAG AAA × Fail

Black Background



This preview shows how the YUV color 158.9590, -4.4168, 16.6990 looks on a black background.

Color Contrast Check

Large Text (above 18pt) WCAG AA ✓ Pass

Any Text WCAG AA ✓ Pass

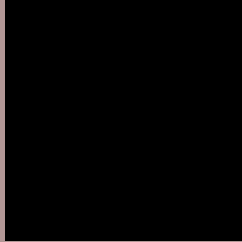
Large Text (above 18pt) WCAG AAA ✓ Pass

Any Text WCAG AAA ✓ Pass

If you want to check with other color combinations, try the [Color Contrast Checker](#).

YUV 158.9590, -4.4168, 16.6990

Background



This preview shows how black text looks on a background with the YUV color 158.9590, -4.4168, 16.6990.



This preview shows how white text looks on a background with the YUV color 158.9590, -4.4168,

Color Blindness Simulation

Color vision deficiency is a very complex topic, and I could not describe the different causes any better than Wikipedia does, so if you want to learn more, you should check out their [article about color blindness](#).

Dichromacy



Original Color

158.9590, -4.4168, 16.6990

Protanopia

157.7400, -2.3368, 2.8590

Deuteranopia

158.6490, -4.2640, 14.3398



Tritanopia

159.3380, 0.8194, 17.2436

Trichromacy



Original Color

158.9590, -4.4168, 16.6990

Protanomaly

158.2460, -3.0793, 7.6773

Deuteranomaly

158.9480, -4.4114, 14.9546

Tritanomaly

159.4690, -1.2172, 17.1287

Monochromacy



Original Color

158.9590, -4.4168, 16.6990

Achromatopsia

159.0000, 0.0000, 0.0000

Achromatomaly

158.9900, -1.4741, 6.1478

CSS Examples

Text

The CSS property to change the color of the text to YUV 158.9590, -4.4168, 16.6990 is called "color". The color property can be set on classes, ids or directly on the HTML element.

This example shows how text in the color `rgb(178, 151, 150)` looks like.

```
.text, #text, p{  
    color:rgb(178, 151, 150)  
}
```

If you want to add a text shadow in that color use the text-shadow property, you can generate a text shadow directly with our [CSS Text Shadow Generator](#).

Here you see how black text with a 4 pixel rgb(178, 151, 150) colored shadow looks like.

```
.shadow{ text-shadow: 4px 4px 2px rgb(178, 151, 150) }
```

Border

The CSS property to change the border of an element to YUV 158.9590, -4.4168, 16.6990 is called "border". The border property can be set on classes, ids or directly on the HTML element.

This example shows the color as border, it can be applied via the CSS property "border" or "border-color".

```
.border, #border, table{ border:4px solid rgb(178, 151, 150) }
```


If only the border color should be changed use the property `border-color`.

```
.border{ border-color:rgb(178, 151, 150) }
```

If you want to add a box shadow in that color use:

Here you see how a box with a 4 pixel `rgb(178, 151, 150)` colored shadow looks like.

```
.boxshadow{ -moz-box-shadow:4px 4px 4px  
4px rgb(178, 151, 150); -webkit-box-  
shadow:4px 4px 4px 4px rgb(178, 151, 150);  
box-shadow:4px 4px 4px 4px rgb(178, 151,  
150) }
```

Background

The CSS property to change the background color of an element to YUV 158.9590, -4.4168, 16.6990 is called "background". The background property can be set on classes, ids or directly on the HTML element.

```
.background, #background, body{  
background: rgb(178, 151, 150) }
```

If only the background color should be changed can be used:

```
.background{ background-color: rgb(178,  
151, 150) }
```

This example shows the color as background, it is applied via the CSS property "background".

To optimize and compress your CSS code, you can use our [online CSS compressor and optimizer](#) based on csstidy. If you want to create a linear or radial gradient as background or border, check our [CSS Gradient Generator](#).

Hey! You found this booklet interesting? Support Converting Colors with the new Membership Option!

The pro membership hides all ads, plus gives you double the colors in the color bucket, and more awesome pro features!

[Learn more, Memberships starting at \\$2.50/m!](#)

**Follow me
on Twitter!**

@ConvertingColor