

Converting Colors

YUV(159.1520, -13.8789,
18.2837)

Have a look what the booklet for
YUV(159.1520, -13.8789, 18.2837)
contains.

YUV(159.1520, -13.8789, 18.2837)	3
<i>Conversions</i>	4
<i>Details</i>	6
<i>Harmonies</i>	12
<i>Previews</i>	24
<i>Color Blindness Simulation</i>	28
<i>CSS Examples</i>	31

Color

**YUV(159.1520, -13.8789,
18.2837)**

Conversions

Conversions Part 1

Format	Color
Hex	B49A83
RGB	180, 154, 131
RGB Percent	71%, 60%, 51%
CMY	0.2941, 0.3961, 0.4863
CMYK	0.00, 0.14, 0.27, 0.29
HSL	28°, 25%, 61%
HSV	28°, 27%, 71%
XYZ	34.4747, 34.4532, 26.3058
YIQ	159.1520, 22.8790, -1.6410

Conversions

Conversions Part 2

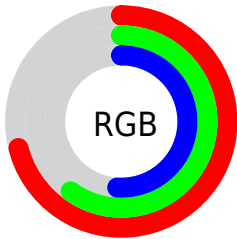
Format	Color
RYB	180, 174, 131
Decimal	11836035
CIELab	65.32, 6.06, 15.64
CIELCh	65, 16.776, 68.824
Yxy	34.4532, 0.3620, 0.3618
Android (android.graphics.Color)	4290026115 (0xFFB49A83)
YUV	159.1520, -13.8789, 18.2837
Hunter-Lab	58.6968, 2.1199, 14.5161

Details

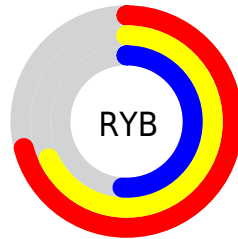
The YUV color $159.1520, -13.8789, 18.2837$ is a light color, and the websafe version is hex $CC9999$. A complement of this color would be $151.8480, 13.8789, -18.2837$, and the grayscale version is $159.0000, 0.0000, 0.0000$.

A 20% lighter version of the original color is $213.6360, -14.6105, 19.6132$, and $107.4830, -12.5631, 16.2394$ is the 20% darker color. If you saturate the color by 10%, you get $151.2300, -18.8474, 25.2313$, and if you desaturate by 10%, it is $167.0740, -8.9105, 11.3361$.

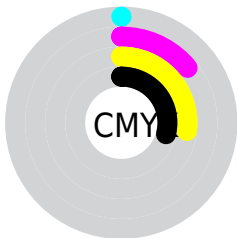
Distribution



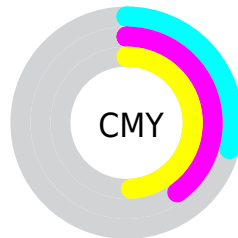
- Red (71%)
- Green (60%)
- Blue (51%)



- Red (71%)
- Yellow (68%)
- Blue (51%)



- Cyan (0%)
- Magenta (14%)
- Yellow (27%)
- Black (29%)



- Cyan (29%)
- Magenta (40%)
- Yellow (49%)

Brightness & Saturation Gradients

These gradients show how the YUV color 159.1520, -13.8789, 18.2837 changes by changing the brightness by 10 percent. The first figure shows a shift by +10% for each color and the second figure -10%.

Similar to the brightness gradients but the following saturation gradients show a change of the YUV color 159.1520, -13.8789, 18.2837 by changing the saturation by 10% instead.

■ 159.1520,
-13.8789, 18.2837

■ 159.1520,
-13.8789, 18.2837

255.0000, 0.0000,
0.0000

■ 132.9670,
-13.2947, 17.5689

■ 213.6360,
-14.6105, 19.6132

■ 107.4830,
-12.5631, 16.2394

■ 239.5320,
-13.5733, 13.5654

■ 83.1840, -12.4157,
15.6246

■ 253.2900, -6.5520,
1.4997

■ 59.8140, -11.2473,
14.1951

■ 38.2160, -10.9525,
12.9656

■ 16.9000, -8.3317,
12.3657

■ 0.0000, 0.0000,

0.0000

■ 159.1520,
-13.8789, 18.2837

■ 159.1520,
-13.8789, 18.2837

■ 151.2300,
-18.8474, 25.2313

■ 167.0740, -8.9105,
11.3361

■ 143.8950,
-24.1052, 31.6641

■ 174.4090, -3.6526,
4.9033

■ 135.9730,
-29.0737, 38.6117

■ 182.3310, 1.3158,
-2.0443

■ 128.6380,
-34.3315, 45.0445

■ 189.6660, 6.5737,
-8.4771

■ 120.7160,
-39.3000, 51.9921

■ 197.5880, 11.5421,
-15.4247

■ 113.3810,
-44.5578, 58.4249

■ 204.9230, 16.8000,
-21.8575

■ 105.4590,
-49.5263, 65.3725

■ 212.6170, 20.8948,
-28.6051

■ 103.1280,
-50.8421, 67.4167

■ 217.9000, 18.2903,
-33.2383

■ 223.7700, 15.3964,
-38.3863

Harmonies

Analogous

The Analogous color harmony consists of three colors that are next to each other on the color wheel.



160.5210, -10.1169, 24.9761



159.1520, -13.8789, 18.2837



157.6730, -14.1358, 7.3028

Triad

The Triadic color harmony groups three colors that are evenly spaced from another and form a triangle on the color wheel.



159.1520, -13.8789, 18.2837



152.7900, 5.0335, -27.8798



160.4920, 10.6034, 5.7075

Complementary

The Complementary color scheme is a pair of colors which are on the opposite of each other on the color wheel.



159.1520, -13.8789, 18.2837



151.8480, 13.8789, -18.2837

Split Complementary

Split-complementary colors differ from the complementary color scheme. The scheme consists of three colors, the original color and two neighbors of the complement color.



158.1310, 14.7254, -9.7619



159.1520, -13.8789, 18.2837



153.2010, 11.7329, -29.9943

Square

The Square scheme is like the rectangle color scheme, but the four colors are evenly spaced on the color wheel.



159.1520, -13.8789, 18.2837



153.6680, -3.2873, -19.0028



155.4560, 15.0582, -23.2019



161.2610, 4.3083, 18.1881

Rectangle

The Rectangle color scheme consists of four colors that form a rectangle on the color wheel.



159.1520, -13.8789, 18.2837



156.4870, -12.0721, -1.3041



155.4560, 15.0582, -23.2019



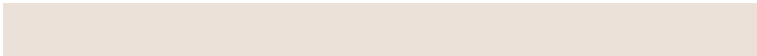
160.2140, 12.2195, 0.6893

Sweetspot

The Sweet Spot groups the original color and five complimentary colors.



159.1520, -13.8789, 18.2837



226.9640, -5.4053, 7.0476



148.6150, 4.1338, 27.5246



112.2240, -3.0684, 4.1886



245.0000, 0.0000, 0.0000



117.0000, 0.0000, 0.0000

Same Dimension

The Same Dimension uses a secret algorithm to generate beautiful new colors.



159.1520, -13.8789, 18.2837



202.0410, -22.2052, 28.9050



173.2400, -20.8243, 5.9285



85.6260, -2.7736, 2.9590



88.0110, -43.3894, 56.9954



14.8180, -7.3053, 9.8066

Inverse Universe

The Inverse Universe completely reimagines the original color for something new.



151.8480, 13.8789, -18.2837



189.9590, 22.2052, -28.9050



137.7600, 20.8243, -5.9285



83.9610, 2.4842, -3.4738



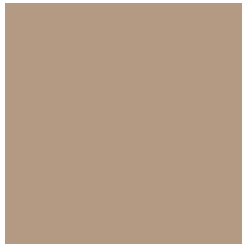
64.9890, 43.3894, -56.9954



11.1820, 7.3053, -9.8066

Previews

White Background



This preview shows how the YUV color 159.1520, -13.8789, 18.2837 looks on a white background.

Color Contrast Check

Large Text (above 18pt) WCAG AA × Fail

Any Text WCAG AA × Fail

Large Text (above 18pt) WCAG AAA × Fail

Any Text WCAG AAA × Fail

Black Background



This preview shows how the YUV color 159.1520, -13.8789, 18.2837 looks on a black background.

Color Contrast Check

Large Text (above 18pt) WCAG AA ✓ Pass

Any Text WCAG AA ✓ Pass

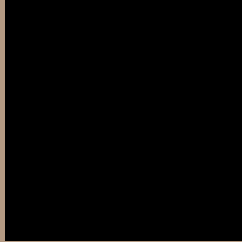
Large Text (above 18pt) WCAG AAA ✓ Pass

Any Text WCAG AAA ✓ Pass

If you want to check with other color combinations, try the [Color Contrast Checker](#).

YUV 159.1520, -13.8789, 18.2837

Background



This preview shows how black text looks on a background with the YUV color 159.1520, -13.8789, 18.2837.



This preview shows how white text looks on a background with the YUV color 159.1520, -13.8789, 18.2837.

Color Blindness Simulation

Color vision deficiency is a very complex topic, and I could not describe the different causes any better than Wikipedia does, so if you want to learn more, you should check out their [article about color blindness](#).

Dichromacy



Original Color

159.1520, -13.8789, 18.2837

Protanopia

157.8410, -12.2466, 8.0324

Deuteranopia

159.7610, -14.1792, 21.2576



Tritanopia

161.4200, -0.2071, 19.8027

Trichromacy



Original Color

159.1520, -13.8789, 18.2837

Protanomaly

158.6350, -13.1311, 11.7211

Deuteranomaly

159.4620, -14.0318, 20.6428

Tritanomaly

160.4540, -5.1538, 19.7728

Monochromacy



Original Color

159.1520, -13.8789, 18.2837

Achromatopsia

159.0000, 0.0000, 0.0000

Achromatomaly

159.0780, -4.9685, 6.9476

CSS Examples

Text

The CSS property to change the color of the text to YUV 159.1520, -13.8789, 18.2837 is called "color". The color property can be set on classes, ids or directly on the HTML element.

This example shows how text in the color `rgb(180, 154, 131)` looks like.

```
.text, #text, p{  
    color:rgb(180, 154, 131)  
}
```

If you want to add a text shadow in that color use the text-shadow property, you can generate a text shadow directly with our [CSS Text Shadow Generator](#).

Here you see how black text with a 4 pixel rgb(180, 154, 131) colored shadow looks like.

```
.shadow{ text-shadow: 4px 4px 2px rgb(180, 154, 131) }
```

Border

The CSS property to change the border of an element to YUV 159.1520, -13.8789, 18.2837 is called "border".

The border property can be set on classes, ids or directly on the HTML element.

This example shows the color as border, it can be applied via the CSS property "border" or "border-color".

```
.border, #border, table{ border:4px solid rgb(180, 154, 131) }
```


If only the border color should be changed use the property `border-color`.

```
.border{ border-color:rgb(180, 154, 131) }
```

If you want to add a box shadow in that color use:

Here you see how a box with a 4 pixel `rgb(180, 154, 131)` colored shadow looks like.

```
.boxshadow{ -moz-box-shadow:4px 4px 4px  
4px rgb(180, 154, 131); -webkit-box-  
shadow:4px 4px 4px 4px rgb(180, 154, 131);  
box-shadow:4px 4px 4px 4px rgb(180, 154,  
131) }
```

Background

The CSS property to change the background color of an element to YUV 159.1520, -13.8789, 18.2837 is called "background". The background property can be set on classes, ids or directly on the HTML element.

```
.background, #background, body{  
background: rgb(180, 154, 131) }
```

If only the background color should be changed can be used:

```
.background{ background-color: rgb(180,  
154, 131) }
```

This example shows the color as background, it is applied via the CSS property "background".

To optimize and compress your CSS code, you can use our [online CSS compressor and optimizer](#) based on csstidy. If you want to create a linear or radial gradient as background or border, check our [CSS Gradient Generator](#).

Hey! You found this booklet interesting? Support Converting Colors with the new Membership Option!

The pro membership hides all ads, plus gives you double the colors in the color bucket, and more awesome pro features!

[Learn more, Memberships starting at \\$2.50/m!](#)

**Follow me
on Twitter!**

@ConvertingColor