

Converting Colors

YUV(159.3270, -12.4862,
38.3012)

Have a look what the booklet for
YUV(159.3270, -12.4862, 38.3012)
contains.

YUV(159.3270, -12.4862, 38.3012)	3
<i>Conversions</i>	4
<i>Details</i>	6
<i>Harmonies</i>	12
<i>Previews</i>	24
<i>Color Blindness Simulation</i>	28
<i>CSS Examples</i>	31

Color

**YUV(159.3270, -12.4862,
38.3012)**

Conversions

Conversions Part 1

Format	Color
Hex	CB8E86
RGB	203, 142, 134
RGB Percent	80%, 56%, 53%
CMY	0.2039, 0.4431, 0.4745
CMYK	0.00, 0.30, 0.34, 0.20
HSL	7°, 40%, 66%
HSV	7°, 34%, 80%
XYZ	38.6047, 33.7637, 27.0366
YIQ	159.3270, 38.9240, 10.4440

Conversions

Conversions Part 2

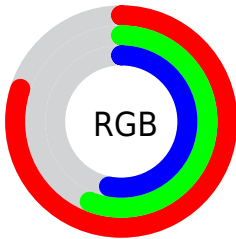
Format	Color
R _Y B	203, 143, 134
Decimal	13340294
CIE Lab	64.77, 22.12, 13.56
CIE LCh	65, 25.945, 31.508
Yxy	33.7637, 0.3884, 0.3397
Android (android.graphics.Color)	4291530374 (0xFFCB8E86)
YUV	159.3270, -12.4862, 38.3012
Hunter-Lab	58.1066, 16.9048, 13.0873

Details

The YUV color $159.3270, -12.4862, 38.3012$ is a light color, and the websafe version is hex $CC9999$. A complement of this color would be $177.6730, 12.4862, -38.3012$, and the grayscale version is $159.0000, 0.0000, 0.0000$.

A 20% lighter version of the original color is $212.6150, -12.6282, 37.1716$, and $106.9460, -11.3124, 35.1274$ is the 20% darker color. If you saturate the color by 10%, you get $146.4810, -16.0131, 49.5672$, and if you desaturate by 10%, it is $172.1730, -8.9593, 27.0353$.

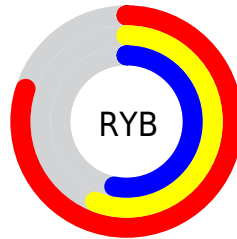
Distribution



Red (80%)

Green (56%)

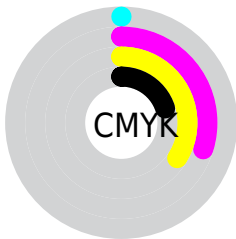
Blue (53%)



Red (80%)

Yellow (56%)

Blue (53%)

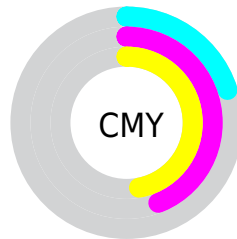


Cyan (0%)

Magenta (30%)

Yellow (34%)

Black (20%)



Cyan (20%)


Magenta (44%)

Yellow (47%)

Brightness & Saturation Gradients

These gradients show how the YUV color 159.3270, -12.4862, 38.3012 changes by changing the brightness by 10 percent. The first figure shows a shift by +10% for each color and the second figure -10%.


Similar to the brightness gradients but the following saturation gradients show a change of the YUV color 159.3270, -12.4862, 38.3012 by changing the saturation by 10% instead.

 159.3270,
-12.4862, 38.3012


 159.3270,
-12.4862, 38.3012


255.0000, 0.0000,
0.0000

 132.8430,
-11.7546, 36.9717


 212.6150,
-12.6282, 37.1716


 106.9460,
-11.3124, 35.1274


 232.2430, -8.5008,
19.9579

 82.1630, -10.4334,
33.1830

 252.4580, -4.6628,
2.2293

 58.3800, -9.5543,
31.2387

 35.4120, -8.0911,
28.5797

 13.4550, -6.6333,
27.6650

 0.0000, 0.0000,

0.0000

■ 159.3270,
-12.4862, 38.3012

■ 159.3270,
-12.4862, 38.3012

■ 146.4810,
-16.0131, 49.5672

■ 172.1730, -8.9593,
27.0353

■ 133.5210,
-19.9769, 60.9331

■ 185.1330, -4.9956,
15.6694

■ 120.6750,
-23.5038, 72.1990

■ 197.9790, -1.4686,
4.4034

■ 107.8290,
-27.0307, 83.4650

■ 210.8250, 2.0583,
-6.8625

■ 94.9830, -30.5576,
94.7309

■ 223.7850, 6.0220,
-18.2284

■ 82.0230, -34.5213,
106.0968

■ 236.5170, 9.1121,
-29.3944

■ 74.7850, -36.8690,
112.4446

■ 239.4520, 7.6652,
-31.9684

Harmonies

Analogous

The Analogous color harmony consists of three colors that are next to each other on the color wheel.



160.4760, -1.7137, 36.4165



159.3270, -12.4862, 38.3012



157.6220, -20.0266, 30.1495

Triad

The Triadic color harmony groups three colors that are evenly spaced from another and form a triangle on the color wheel.



159.3270, -12.4862, 38.3012



150.0710, -7.9230, -25.4953



155.0460, 23.6413, -22.8423

Complementary

The Complementary color scheme is a pair of colors which are on the opposite of each other on the color wheel.



159.3270, -12.4862, 38.3012



177.6730, 12.4862, -38.3012

Split Complementary

Split-complementary colors differ from the complementary color scheme. The scheme consists of three colors, the original color and two neighbors of the complement color.



148.9140, 23.7064, -43.7746



159.3270, -12.4862, 38.3012



146.8050, 5.5191, -43.6790

Square

The Square scheme is like the rectangle color scheme, but the four colors are evenly spaced on the color wheel.



159.3270, -12.4862, 38.3012



153.2710, -17.8816, -4.6227



145.5510, 17.4764, -52.2262



159.5330, 18.4712, 2.1636

Rectangle

The Rectangle color scheme consists of four colors that form a rectangle on the color wheel.



159.3270, -12.4862, 38.3012



156.3990, -21.8887, 20.6981



145.5510, 17.4764, -52.2262



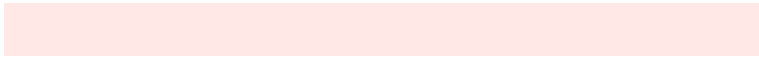
152.8170, 24.2472, -30.5345

Sweetspot

The Sweet Spot groups the original color and five complimentary colors.



159.3270, -12.4862, 38.3012



238.6490, -4.2640, 14.3398



161.6990, 16.9104, 36.2210



117.9580, -2.9373, 8.8068



0.0000, 0.0000, 0.0000



128.0000, 0.0000, 0.0000

Same Dimension

The Same Dimension uses a secret algorithm to generate beautiful new colors.



159.3270, -12.4862, 38.3012



189.0260, -19.2398, 57.8592



178.6980, -22.0361, 21.3129



95.5770, -1.7635, 5.6330



60.7870, -29.9680, 92.2718



13.7100, -6.7590, 21.3023

Inverse Universe

The Inverse Universe completely reimagines the original color for something new.



177.6730, 12.4862, -38.3012



216.5610, 18.9504, -58.3740



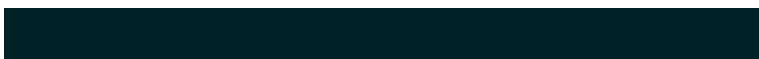
158.3020, 22.0361, -21.3129



98.4230, 1.7635, -5.6330



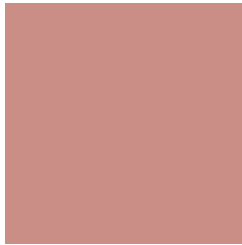
105.2130, 29.9680, -92.2718



24.2900, 6.7590, -21.3023

Previews

White Background



This preview shows how the YUV color 159.3270, -12.4862, 38.3012 looks on a white background.

Color Contrast Check

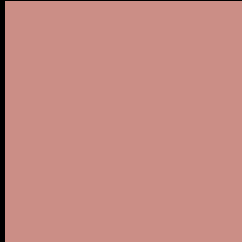
Large Text (above 18pt) WCAG AA × Fail

Any Text WCAG AA × Fail

Large Text (above 18pt) WCAG AAA × Fail

Any Text WCAG AAA × Fail

Black Background



This preview shows how the YUV color 159.3270, -12.4862, 38.3012 looks on a black background.

Color Contrast Check

Large Text (above 18pt) WCAG AA ✓ Pass

Any Text WCAG AA ✓ Pass

Large Text (above 18pt) WCAG AAA ✓ Pass

Any Text WCAG AAA ✓ Pass

If you want to check with other color combinations, try the [Color Contrast Checker](#).

YUV 159.3270, -12.4862, 38.3012

Background



This preview shows how black text looks on a background with the YUV color 159.3270, -12.4862, 38.3012.



This preview shows how white text looks on a background with the YUV color 159.3270, -12.4862, 38.3012.

Color Blindness Simulation

Color vision deficiency is a very complex topic, and I could not describe the different causes any better than Wikipedia does, so if you want to learn more, you should check out their [article about color blindness](#).

Dichromacy



Original Color

159.3270, -12.4862, 38.3012

Protanopia

157.3830, -7.5838, 5.8031

Deuteranopia

158.1030, -12.8688, 20.9577



Tritanopia

160.5750, -5.2135, 38.9607

Trichromacy



Original Color

159.3270, -12.4862, 38.3012

Protanomaly

158.2920, -9.5110, 17.2839

Deuteranomaly

158.8480, -12.7431, 27.3203

Tritanomaly

160.1790, -7.9762, 38.4310

Monochromacy



Original Color

159.3270, -12.4862, 38.3012

Achromatopsia

159.0000, 0.0000, 0.0000

Achromatomaly

159.2360, -4.5533, 13.8250

CSS Examples

Text

The CSS property to change the color of the text to YUV 159.3270, -12.4862, 38.3012 is called "color". The color property can be set on classes, ids or directly on the HTML element.

This example shows how text in the color `rgb(203, 142, 134)` looks like.

```
.text, #text, p{  
    color:rgb(203, 142, 134)  
}
```

If you want to add a text shadow in that color use the text-shadow property, you can generate a text shadow directly with our [CSS Text Shadow Generator](#).

Here you see how black text with a 4 pixel rgb(203, 142, 134) colored shadow looks like.

```
.shadow{ text-shadow: 4px 4px 2px rgb(203, 142, 134) }
```

Border

The CSS property to change the border of an element to YUV 159.3270, -12.4862, 38.3012 is called "border".

The border property can be set on classes, ids or directly on the HTML element.

This example shows the color as border, it can be applied via the CSS property "border" or "border-color".

```
.border, #border, table{ border:4px solid rgb(203, 142, 134) }
```


If only the border color should be changed use the property `border-color`.

```
.border{ border-color:rgb(203, 142, 134) }
```

If you want to add a box shadow in that color use:

Here you see how a box with a 4 pixel `rgb(203, 142, 134)` colored shadow looks like.

```
.boxshadow{ -moz-box-shadow:4px 4px 4px  
4px rgb(203, 142, 134); -webkit-box-  
shadow:4px 4px 4px 4px rgb(203, 142, 134);  
box-shadow:4px 4px 4px 4px rgb(203, 142,  
134) }
```

Background

The CSS property to change the background color of an element to YUV 159.3270, -12.4862, 38.3012 is called "background". The background property can be set on classes, ids or directly on the HTML element.

```
.background, #background, body{  
background: rgb(203, 142, 134) }
```

If only the background color should be changed can be used:

```
.background{ background-color: rgb(203,  
142, 134) }
```

This example shows the color as background, it is applied via the CSS property "background".

To optimize and compress your CSS code, you can use our [online CSS compressor and optimizer](#) based on csstidy. If you want to create a linear or radial gradient as background or border, check our [CSS Gradient Generator](#).

Hey! You found this booklet interesting? Support Converting Colors with the new Membership Option!

The pro membership hides all ads, plus gives you double the colors in the color bucket, and more awesome pro features!

[Learn more, Memberships starting at \\$2.50/m!](#)

**Follow me
on Twitter!**

@ConvertingColor