

Converting Colors

YUV(159.5780, -20.0050,
23.1721)

Have a look what the booklet for
YUV(159.5780, -20.0050, 23.1721)
contains.

YUV(159.5780, -20.0050, 23.1721)	3
<i>Conversions</i>	4
<i>Details</i>	6
<i>Harmonies</i>	12
<i>Previews</i>	24
<i>Color Blindness Simulation</i>	28
<i>CSS Examples</i>	31

Color

**YUV(159.5780, -20.0050,
23.1721)**

Conversions

Conversions Part 1

Format	Color
Hex	BA9A77
RGB	186, 154, 119
RGB Percent	73%, 60%, 47%
CMY	0.2706, 0.3961, 0.5333
CMYK	0.00, 0.17, 0.36, 0.27
HSL	31°, 33%, 60%
HSV	31°, 36%, 73%
XYZ	35.1351, 34.8822, 22.3339
YIQ	159.5780, 30.3070, -4.1010

Conversions

Conversions Part 2

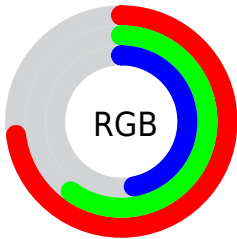
Format	Color
R _Y B	180, 186, 119
Decimal	12229239
CIE Lab	65.66, 6.87, 22.84
CIE LCh	66, 23.850, 73.250
Yxy	34.8822, 0.3805, 0.3777
Android (android.graphics.Color)	4290419319 (0xFFBA9A77)
YUV	159.5780, -20.0050, 23.1721
Hunter-Lab	59.0612, 2.8314, 18.9224

Details

The YUV color **159.5780, -20.0050, 23.1721** is a light color, and the websafe version is hex **CC9966**. A complement of this color would be **145.4220, 20.0050, -23.1721**, and the grayscale version is **160.0000, 0.0000, 0.0000**.

A 20% lighter version of the original color is **214.2470, -21.3208, 25.2164**, and **107.9090, -18.6891, 21.1278** is the 20% darker color. If you saturate the color by 10%, you get **152.1290, -25.6996, 29.7049**, and if you desaturate by 10%, it is **167.0270, -14.3103, 16.6393**.

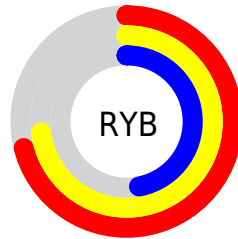
Distribution



Red (73%)

Green (60%)

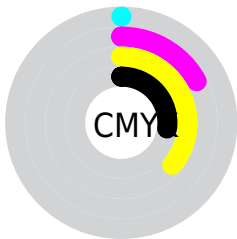
Blue (47%)



Red (71%)

Yellow (73%)

Blue (47%)

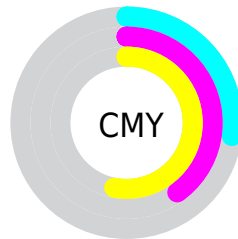


Cyan (0%)

Magenta (17%)

Yellow (36%)

Black (27%)



Cyan (27%)

Magenta (40%)

Yellow (53%)

Brightness & Saturation Gradients

These gradients show how the YUV color 159.5780, -20.0050, 23.1721 changes by changing the brightness by 10 percent. The first figure shows a shift by +10% for each color and the second figure -10%.

Similar to the brightness gradients but the following saturation gradients show a change of the YUV color 159.5780, -20.0050, 23.1721 by changing the saturation by 10% instead.

■ 159.5780,
-20.0050, 23.1721

■ 159.5780,
-20.0050, 23.1721

255.0000, 0.0000,
0.0000

■ 133.0940,
-19.2733, 21.8426

■ 214.2470,
-21.3208, 25.2164

■ 107.9090,
-18.6891, 21.1278

■ 238.0500,
-19.2516, 14.8652

■ 83.1260, -17.8101,
19.1835

■ 251.8080,
-12.2303, 2.7994

■ 59.7560, -16.6417,
17.7540

■ 37.4030, -17.9467,
16.3096

■ 18.0850, -8.9159,
13.0805

■ 0.0000, 0.0000,

0.0000

■ 159.5780,
-20.0050, 23.1721

■ 159.5780,
-20.0050, 23.1721

■ 152.1290,
-25.6996, 29.7049

■ 167.0270,
-14.3103, 16.6393

■ 144.7940,
-30.9574, 36.1377

■ 174.3620, -9.0525,
10.2065

■ 137.3450,
-36.6521, 42.6704

■ 181.8110, -3.3578,
3.6738

■ 130.0100,
-41.9099, 49.1032

■ 189.1460, 1.9000,
-2.7590

■ 123.1480,
-47.8940, 55.1212

■ 196.0080, 7.8841,
-8.7770

■ 115.6990,
-53.5886, 61.6540

■ 203.4570, 13.5787,
-15.3098

■ 112.5530,
-55.4886, 64.4130

■ 210.7920, 18.8365,
-21.7426

■ 216.7590, 18.8528,
-26.9756

■ 222.0420, 16.2483,
-31.6088

Harmonies

Analogous

The Analogous color harmony consists of three colors that are next to each other on the color wheel.



161.6100, -15.0907, 33.6680



159.5780, -20.0050, 23.1721



157.2940, -19.3719, 6.7582

Triad

The Triadic color harmony groups three colors that are evenly spaced from another and form a triangle on the color wheel.



159.5780, -20.0050, 23.1721



150.0160, 8.8661, -43.8640



162.7360, 13.9342, 10.7555

Complementary

The Complementary color scheme is a pair of colors which are on the opposite of each other on the color wheel.



159.5780, -20.0050, 23.1721



145.4220, 20.0050, -23.1721

Split Complementary

Split-complementary colors differ from the complementary color scheme. The scheme consists of three colors, the original color and two neighbors of the complement color.



159.6130, 20.4038, -11.0616



159.5780, -20.0050, 23.1721



150.8230, 18.3283, -45.4488

Square

The Square scheme is like the rectangle color scheme, but the four colors are evenly spaced on the color wheel.



159.5780, -20.0050, 23.1721



152.0040, -2.9600, -30.6985



154.6380, 22.3635, -33.0085



163.0280, 4.4232, 28.0394

Rectangle

The Rectangle color scheme consists of four colors that form a rectangle on the color wheel.



159.5780, -20.0050, 23.1721



155.7270, -16.1344, -5.0226



154.6380, 22.3635, -33.0085



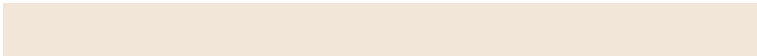
161.6750, 16.4292, 3.7930

Sweetspot

The Sweet Spot groups the original color and five complimentary colors.



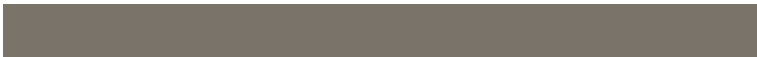
159.5780, -20.0050, 23.1721



231.9920, -7.8841, 8.7770



142.6810, 4.1013, 37.9908



116.0670, -4.9630, 5.2032



250.0000, 0.0000, 0.0000



122.0000, 0.0000, 0.0000

Same Dimension

The Same Dimension uses a secret algorithm to generate beautiful new colors.



159.5780, -20.0050, 23.1721



200.7940, -30.9574, 36.1377



178.0630, -29.1181, 6.0837



88.0390, -2.4842, 3.4738



94.1910, -46.4362, 54.2065



17.1770, -8.4683, 9.4918

Inverse Universe

The Inverse Universe completely reimagines the original color for something new.



145.4220, 20.0050, -23.1721



179.2060, 30.9574, -36.1377



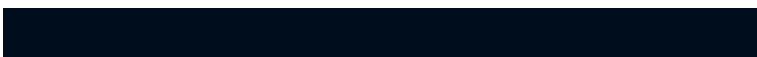
126.9370, 29.1181, -6.0837



86.3740, 2.7736, -2.9590



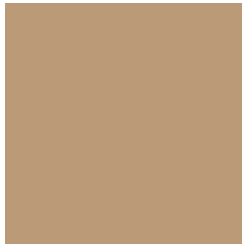
61.2220, 46.7256, -53.6917



10.8230, 8.4683, -9.4918

Previews

White Background



This preview shows how the YUV color 159.5780, -20.0050, 23.1721 looks on a white background.

Color Contrast Check

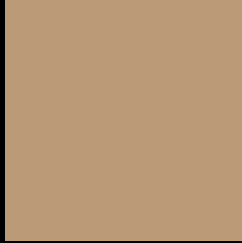
Large Text (above 18pt) WCAG AA × Fail

Any Text WCAG AA × Fail

Large Text (above 18pt) WCAG AAA × Fail

Any Text WCAG AAA × Fail

Black Background



This preview shows how the YUV color 159.5780, -20.0050, 23.1721 looks on a black background.

Color Contrast Check

Large Text (above 18pt) WCAG AA ✓ Pass

Any Text WCAG AA ✓ Pass

Large Text (above 18pt) WCAG AAA ✓ Pass

Any Text WCAG AAA ✓ Pass

If you want to check with other color combinations, try the [Color Contrast Checker](#).

YUV 159.5780, -20.0050, 23.1721

Background



This preview shows how black text looks on a background with the YUV color 159.5780, -20.0050, 23.1721.



This preview shows how white text looks on a background with the YUV color 159.5780, -20.0050,

Color Blindness Simulation

Color vision deficiency is a very complex topic, and I could not describe the different causes any better than Wikipedia does, so if you want to learn more, you should check out their [article about color blindness](#).

Dichromacy



Original Color

159.5780, -20.0050, 23.1721

Protanopia

158.2560, -18.3672, 11.1765

Deuteranopia

159.5890, -20.0104, 24.9164



Tritanopia

161.9260, -0.9495, 24.6209

Trichromacy



Original Color

159.5780, -20.0050, 23.1721

Protanomaly

158.4630, -18.9623, 15.3799

Deuteranomaly

159.2900, -19.8630, 24.3017

Tritanomaly

161.0910, -7.9329, 24.4762

Monochromacy



Original Color

159.5780, -20.0050, 23.1721

Achromatopsia

160.0000, 0.0000, 0.0000

Achromatomaly

159.8070, -7.2999, 8.0623

CSS Examples

Text

The CSS property to change the color of the text to YUV 159.5780, -20.0050, 23.1721 is called "color". The color property can be set on classes, ids or directly on the HTML element.

This example shows how text in the color `rgb(186, 154, 119)` looks like.

```
.text, #text, p{  
    color:rgb(186, 154, 119)  
}
```

If you want to add a text shadow in that color use the text-shadow property, you can generate a text shadow directly with our [CSS Text Shadow Generator](#).

Here you see how black text with a 4 pixel rgb(186, 154, 119) colored shadow looks like.

```
.shadow{ text-shadow: 4px 4px 2px rgb(186, 154, 119) }
```

Border

The CSS property to change the border of an element to YUV 159.5780, -20.0050, 23.1721 is called "border".

The border property can be set on classes, ids or directly on the HTML element.

This example shows the color as border, it can be applied via the CSS property "border" or "border-color".

```
.border, #border, table{ border:4px solid rgb(186, 154, 119) }
```


If only the border color should be changed use the property `border-color`.

```
.border{ border-color:rgb(186, 154, 119) }
```

If you want to add a box shadow in that color use:

Here you see how a box with a 4 pixel `rgb(186, 154, 119)` colored shadow looks like.

```
.boxshadow{ -moz-box-shadow:4px 4px 4px  
4px rgb(186, 154, 119); -webkit-box-  
shadow:4px 4px 4px 4px rgb(186, 154, 119);  
box-shadow:4px 4px 4px 4px rgb(186, 154,  
119) }
```

Background

The CSS property to change the background color of an element to YUV 159.5780, -20.0050, 23.1721 is called "background". The background property can be set on classes, ids or directly on the HTML element.

```
.background, #background, body{  
background: rgb(186, 154, 119) }
```

If only the background color should be changed can be used:

```
.background{ background-color: rgb(186,  
154, 119) }
```

This example shows the color as background, it is applied via the CSS property "background".

To optimize and compress your CSS code, you can use our [online CSS compressor and optimizer](#) based on csstidy. If you want to create a linear or radial gradient as background or border, check our [CSS Gradient Generator](#).

Hey! You found this booklet interesting? Support Converting Colors with the new Membership Option!

The pro membership hides all ads, plus gives you double the colors in the color bucket, and more awesome pro features!

[Learn more, Memberships starting at \\$2.50/m!](#)

**Follow me
on Twitter!**

@ConvertingColor