

Converting Colors

YUV(159.6170, -8.6852,
79.2659)

Have a look what the booklet for
YUV(159.6170, -8.6852, 79.2659)
contains.

YUV(159.6170, -8.6852, 79.2659)	3
<i>Conversions</i>	4
<i>Details</i>	6
<i>Harmonies</i>	12
<i>Previews</i>	24
<i>Color Blindness Simulation</i>	28
<i>CSS Examples</i>	31

Color

**YUV(159.6170, -8.6852,
79.2659)**

Conversions

Conversions Part 1

Format	Color
Hex	FA758E
RGB	250, 117, 142
RGB Percent	98%, 46%, 56%
CMY	0.0196, 0.5412, 0.4431
CMYK	0.00, 0.53, 0.43, 0.02
HSL	349°, 93%, 72%
HSV	349°, 53%, 98%
XYZ	50.6681, 34.9996, 29.6763
YIQ	159.6170, 71.2430, 35.9710

Conversions

Conversions Part 2

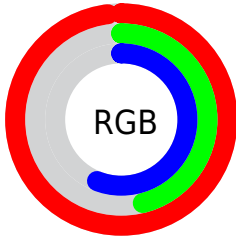
Format	Color
RYB	250, 117, 142
Decimal	16414094
CIELab	65.75, 53.05, 11.27
CIELCh	66, 54.238, 11.996
Yxy	34.9996, 0.4393, 0.3034
Android (android.graphics.Color)	4294604174 (0xFFFA758E)
YUV	159.6170, -8.6852, 79.2659
Hunter-Lab	59.1604, 49.3461, 11.6710

Details

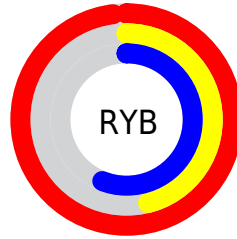
The YUV color **159.6170, -8.6852, 79.2659** is a light color, and the websafe version is hex **FF6699**. A complement of this color would be **207.3830, 8.6852, -79.2659**, and the grayscale version is **160.0000, 0.0000, 0.0000**.

A 20% lighter version of the original color is **200.1400, -2.0410, 48.1122**, and **103.3930, -5.6167, 75.0773** is the 20% darker color. If you saturate the color by 10%, you get **142.6620, -10.1864, 94.1354**, and if you desaturate by 10%, it is **176.5720, -7.1840, 64.3964**.

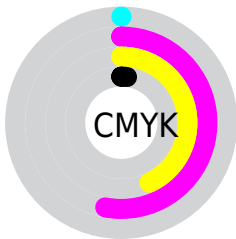
Distribution



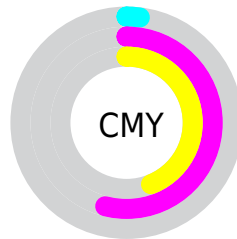
- Red (98%)
- Green (46%)
- Blue (56%)



- Red (98%)
- Yellow (46%)
- Blue (56%)



- Cyan (0%)
- Magenta (53%)
- Yellow (43%)
- Black (2%)





- Cyan (2%)
- Magenta (54%)
- Yellow (44%)

Brightness & Saturation Gradients

These gradients show how the YUV color 159.6170, -8.6852, 79.2659 changes by changing the brightness by 10 percent. The first figure shows a shift by +10% for each color and the second figure -10%.

Similar to the brightness gradients but the following saturation gradients show a change of the YUV color 159.6170, -8.6852, 79.2659 by changing the saturation by 10% instead.

 159.6170, -8.6852,
79.2659

 159.6170, -8.6852,
79.2659

255.0000, 0.0000,
0.0000

 131.6490, -7.2220,
76.6068

 200.1400, -2.0410,
48.1122


 103.3930, -5.6167,
75.0773


 219.6540, 1.6496,
30.9984

 74.4900, -2.7066,
74.9923

 239.9830, 5.9244,
13.1699

 44.2280, 1.3666,
75.2220

 33.4620, -3.6788,
60.1078

 22.1260, -10.9081,
45.4935

 13.9820, -5.9071,

28.0798

■ 0.0000, 0.0000,
0.0000

■ 159.6170, -8.6852,
79.2659

■ 159.6170, -8.6852,
79.2659

■ 142.6620,
-10.1864, 94.1354

■ 176.5720, -7.1840,
64.3964

■ 125.5930,
-12.1243, 109.1049

■ 193.6410, -5.2460,
49.4268

■ 108.6380,
-13.6255, 123.9745

■ 210.5960, -3.7448,
34.5573

■ 91.6830, -15.1267,
138.8440

■ 227.5510, -2.2436,
19.6878

■ 80.1080, -16.3222,
148.9953

■ 244.6200, -0.3057,
4.7183

253.5050, 0.7370,
-3.0739

Harmonies

Analogous

The Analogous color harmony consists of three colors that are next to each other on the color wheel.



163.3540, 13.6295, 61.9565



159.6170, -8.6852, 79.2659



158.2530, -30.1977, 72.5691

Triad

The Triadic color harmony groups three colors that are evenly spaced from another and form a triangle on the color wheel.



159.6170, -8.6852, 79.2659



146.6860, -30.9042, -27.7886



130.2790, 60.0085, -114.2547

Complementary

The Complementary color scheme is a pair of colors which are on the opposite of each other on the color wheel.



159.6170, -8.6852, 79.2659



207.3830, 8.6852, -79.2659

Split Complementary

Split-complementary colors differ from the complementary color scheme. The scheme consists of three colors, the original color and two neighbors of the complement color.



131.7830, 45.4630, -115.5737



159.6170, -8.6852, 79.2659



123.8180, 2.0617, -101.5724

Square

The Square scheme is like the rectangle color scheme, but the four colors are evenly spaced on the color wheel.



159.6170, -8.6852, 79.2659



152.6390, -46.1640, 13.4716



128.3000, 24.5021, -112.5191



154.1080, 49.7398, -40.4367

Rectangle

The Rectangle color scheme consists of four colors that form a rectangle on the color wheel.



159.6170, -8.6852, 79.2659



157.1790, -41.5002, 57.7250



128.3000, 24.5021, -112.5191



131.8290, 55.7933, -115.6140

Sweetspot

The Sweet Spot groups the original color and five complimentary colors.



159.6170, -8.6852, 79.2659



227.1710, -2.5493, 24.4060



163.8560, 42.4690, 51.8693



111.0450, -1.5012, 14.8695



0.0000, 0.0000, 0.0000



128.0000, 0.0000, 0.0000

Same Dimension

The Same Dimension uses a secret algorithm to generate beautiful new colors.



159.6170, -8.6852, 79.2659



144.1570, -10.9234, 97.2093



180.2470, -31.1808, 61.1734



116.2290, -0.6059, 7.6922



60.5010, -12.5720, 112.6936



19.6070, -3.7503, 36.3017

Inverse Universe

The Inverse Universe completely reimagines the original color for something new.



159.6170, -8.6852, 79.2659



144.1570, -10.9234, 97.2093



186.7530, 31.1808, -61.1734



116.2290, -0.6059, 7.6922



60.5010, -12.5720, 112.6936



19.6070, -3.7503, 36.3017

Previews

White Background



This preview shows how the YUV color 159.6170, -8.6852, 79.2659 looks on a white background.

Color Contrast Check

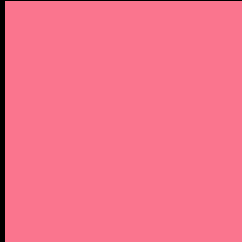
Large Text (above 18pt) WCAG AA × Fail

Any Text WCAG AA × Fail

Large Text (above 18pt) WCAG AAA × Fail

Any Text WCAG AAA × Fail

Black Background



This preview shows how the YUV color 159.6170, -8.6852, 79.2659 looks on a black background.

Color Contrast Check

Large Text (above 18pt) WCAG AA ✓ Pass

Any Text WCAG AA ✓ Pass

Large Text (above 18pt) WCAG AAA ✓ Pass

Any Text WCAG AAA ✓ Pass

If you want to check with other color combinations, try the [Color Contrast Checker](#).

YUV 159.6170, -8.6852, 79.2659

Background



This preview shows how black text looks on a background with the YUV color 159.6170, -8.6852, 79.2659.



This preview shows how white text looks on a background with the YUV color 159.6170, -8.6852,

79.2659.

Color Blindness Simulation

Color vision deficiency is a very complex topic, and I could not describe the different causes any better than Wikipedia does, so if you want to learn more, you should check out their [article about color blindness](#).

Dichromacy



Original Color

159.6170, -8.6852, 79.2659

Protanopia

160.5810, 2.1786, 1.2445

Deuteranopia

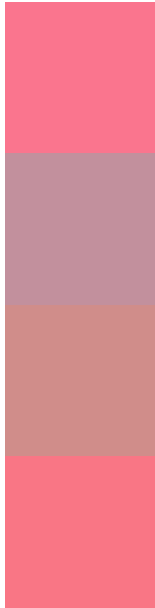
160.9180, -12.2846, 20.2429



Tritanopia

158.8960, -15.2317, 79.0212

Trichromacy



Original Color

159.6170, -8.6852, 79.2659

Protanomaly

160.4320, -1.6920, 29.4391

Deuteranomaly

160.6910, -11.1867, 41.4900

Tritanomaly

158.8790, -12.7583, 79.0361

Monochromacy



Original Color

159.6170, -8.6852, 79.2659

Achromatopsia

160.0000, 0.0000, 0.0000

Achromatomaly

159.6770, -3.2918, 29.2243

CSS Examples

Text

The CSS property to change the color of the text to YUV 159.6170, -8.6852, 79.2659 is called "color". The color property can be set on classes, ids or directly on the HTML element.

This example shows how text in the color `rgb(250, 117, 142)` looks like.

```
.text, #text, p{  
    color:rgb(250, 117, 142)  
}
```

If you want to add a text shadow in that color use the text-shadow property, you can generate a text shadow directly with our [CSS Text Shadow Generator](#).

Here you see how black text with a 4 pixel rgb(250, 117, 142) colored shadow looks like.

```
.shadow{ text-shadow: 4px 4px 2px rgb(250, 117, 142) }
```

Border

The CSS property to change the border of an element to YUV 159.6170, -8.6852, 79.2659 is called "border". The border property can be set on classes, ids or directly on the HTML element.

This example shows the color as border, it can be applied via the CSS property "border" or "border-color".

```
.border, #border, table{ border:4px solid rgb(250, 117, 142) }
```


If only the border color should be changed use the property `border-color`.

```
.border{ border-color:rgb(250, 117, 142) }
```

If you want to add a box shadow in that color use:

Here you see how a box with a 4 pixel `rgb(250, 117, 142)` colored shadow looks like.

```
.boxshadow{ -moz-box-shadow:4px 4px 4px  
4px rgb(250, 117, 142); -webkit-box-  
shadow:4px 4px 4px 4px rgb(250, 117, 142);  
box-shadow:4px 4px 4px 4px rgb(250, 117,  
142) }
```

Background

The CSS property to change the background color of an element to YUV 159.6170, -8.6852, 79.2659 is called "background". The background property can be set on classes, ids or directly on the HTML element.

```
.background, #background, body{  
background: rgb(250, 117, 142) }
```

If only the background color should be changed can be used:

```
.background{ background-color: rgb(250,  
117, 142) }
```

This example shows the color as background, it is applied via the CSS property "background".

To optimize and compress your CSS code, you can use our [online CSS compressor and optimizer](#) based on csstidy. If you want to create a linear or radial gradient as background or border, check our [CSS Gradient Generator](#).

Hey! You found this booklet interesting? Support Converting Colors with the new Membership Option!

The pro membership hides all ads, plus gives you double the colors in the color bucket, and more awesome pro features!

[Learn more, Memberships starting at \\$2.50/m!](#)

**Follow me
on Twitter!**

@ConvertingColor