

# Converting Colors

YUV(159.6650, 28.7592,  
62.5608)

Have a look what the booklet for  
YUV(159.6650, 28.7592, 62.5608)  
contains.

<b>YUV(159.6650, 28.7592, 62.5608)</b> .....	3
<b><i>Conversions</i></b> .....	4
<b><i>Details</i></b> .....	6
<b><i>Harmonies</i></b> .....	12
<b><i>Previews</i></b> .....	24
<b><i>Color Blindness Simulation</i></b> .....	28
<b><i>CSS Examples</i></b> .....	31

# Color

**YUV(159.6650, 28.7592,  
62.5608)**

# Conversions

## Conversions Part 1

Format	Color
Hex	E770DA
RGB	231, 112, 218
RGB Percent	91%, 44%, 85%
CMY	0.0941, 0.5608, 0.1451
CMYK	0.00, 0.52, 0.06, 0.09
HSL	307°, 71%, 67%
HSV	307°, 52%, 91%
XYZ	51.4041, 33.6392, 70.1134
YIQ	159.6650, 36.8980, 58.1940

# Conversions

## Conversions Part 2

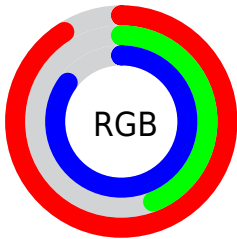
<b>Format</b>	<b>Color</b>
<b>R<sub>YB</sub></b>	231, 112, 218
Decimal	15167706
CIE <sub>Lab</sub>	64.68, 59.63, -33.61
CIE <sub>LCh</sub>	65, 68.453, 330.592
Yxy	33.6392, 0.3313, 0.2168
Android (android.graphics.Color)	4293357786 (0xFFE770DA)
YUV	159.6650, 28.7592, 62.5608
Hunter-Lab	57.9993, 56.7034, -31.0741

# Details

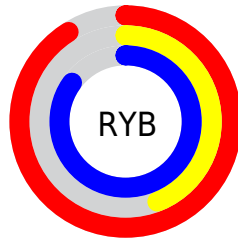
The YUV color **159.6650, 28.7592, 62.5608** is a light color, and the websafe version is hex **CC66CC**. A complement of this color would be **183.3350, -28.7592, -62.5608**, and the grayscale version is **159.0000, 0.0000, 0.0000**.

A 20% lighter version of the original color is **203.9310, 25.1770, 44.7875**, and **103.1810, 29.4908, 61.2313** is the 20% darker color. If you saturate the color by 10%, you get **145.8220, 34.1048, 74.7011**, and if you desaturate by 10%, it is **173.5080, 23.4136, 50.4205**.

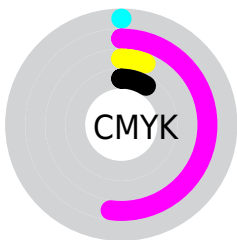
# Distribution



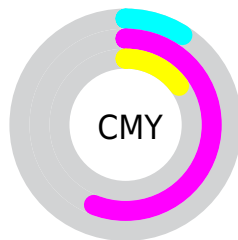
- Red (91%)
- Green (44%)
- Blue (85%)



- Red (91%)
- Yellow (44%)
- Blue (85%)



- Cyan (0%)
- Magenta (52%)
- Yellow (6%)
- Black (9%)



- Cyan (9%)
- Magenta (56%)
- Yellow (15%)

# Brightness & Saturation Gradients

These gradients show how the YUV color 159.6650, 28.7592, 62.5608 changes by changing the brightness by 10 percent. The first figure shows a shift by +10% for each color and the second figure -10%.

Similar to the brightness gradients but the following saturation gradients show a change of the YUV color 159.6650, 28.7592, 62.5608 by changing the saturation by 10% instead.



159.6650, 28.7592,  
62.5608

159.6650, 28.7592,  
62.5608

255.0000, 0.0000,  
0.0000

131.3660, 28.9066,  
61.9460

203.9310, 25.1770,  
44.7875

103.1810, 29.4908,  
61.2313

220.3670, 17.0741,  
30.3731

71.7730, 31.6639,  
64.2201

237.3900, 8.6817,  
15.4440

47.5230, 30.8012,  
60.9313

36.7140, 24.2980,  
46.7318

26.2040, 17.6474,  
33.1471

15.8080, 11.4337,

19.4624

■ 2.4110, 6.6994,  
-2.1144

■ 0.0000, 0.0000,  
0.0000

■ 159.6650, 28.7592,  
62.5608

■ 159.6650, 28.7592,  
62.5608

■ 145.8220, 34.1048,  
74.7011

■ 173.5080, 23.4136,  
50.4205

■ 132.0930, 39.8872,  
86.7414

■ 187.2370, 17.6312,  
38.3802

■ 118.2500, 45.2328,  
98.8817

■ 201.0800, 12.2856,  
26.2398

■ 104.5210, 51.0151,  
110.9221

■ 214.8090, 6.5032,  
14.1995

92.5530, 55.9294,  
121.4180

229.2390, 0.8682,  
1.5444

242.9680, -4.9142,  
-10.4959

245.6580, -4.7614,  
-12.8551

245.8860, -3.8878,  
-13.0550

246.2280, -2.5774,  
-13.3550

# Harmonies

## Analogous

The Analogous color harmony consists of three colors that are next to each other on the color wheel.



158.1930, 47.7259, -1.0463



159.6650, 28.7592, 62.5608



150.0220, 3.9332, 92.0657

# Triad

The Triadic color harmony groups three colors that are evenly spaced from another and form a triangle on the color wheel.



159.6650, 28.7592, 62.5608



146.0120, -71.9839, 35.0695



133.4470, 41.6846, -117.0330

# Complementary

The Complementary color scheme is a pair of colors which are on the opposite of each other on the color wheel.



159.6650, 28.7592, 62.5608



183.3350, -28.7592, -62.5608

# Split Complementary

Split-complementary colors differ from the complementary color scheme. The scheme consists of three colors, the original color and two neighbors of the complement color.



126.3790, 14.6032, -110.8344



159.6650, 28.7592, 62.5608



141.6710, -51.6028, -15.4975

# Square

The Square scheme is like the rectangle color scheme, but the four colors are evenly spaced on the color wheel.



159.6650, 28.7592, 62.5608



151.8080, -52.1633, 71.2054



116.8490, -11.7576, -102.4766



133.5560, 59.8719, -117.1286



# Rectangle

The Rectangle color scheme consists of four colors that form a rectangle on the color wheel.



159.6650, 28.7592, 62.5608



147.8100, -14.6963, 94.0056



116.8490, -11.7576, -102.4766



131.1670, 32.9487, -115.0335

# Sweetspot

The Sweet Spot groups the original color and five complimentary colors.



159.6650, 28.7592, 62.5608



232.2380, 9.2497, 19.9623



129.1540, 50.2101, -4.5201



114.1570, 5.3456, 12.1403



0.0000, 0.0000, 0.0000



128.0000, 0.0000, 0.0000



# Same Dimension

The Same Dimension uses a secret algorithm to generate beautiful new colors.



159.6650, 28.7592, 62.5608



160.3160, 38.2982, 83.0379



153.0530, 3.4249, 68.3595



107.7280, 2.5991, 6.3775



71.6470, 43.0650, 94.1486



20.3790, 12.1382, 26.8546



# Inverse Universe

The Inverse Universe completely reimagines the original color for something new.



159.6650, 28.7592, 62.5608



160.3160, 38.2982, 83.0379



189.9470, -3.4249, -68.3595



107.7280, 2.5991, 6.3775



71.6470, 43.0650, 94.1486

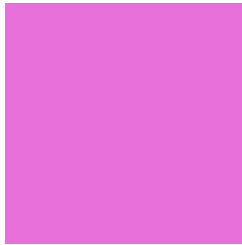


20.3790, 12.1382, 26.8546



# Previews

## White Background



This preview shows how the YUV color 159.6650, 28.7592, 62.5608 looks on a white background.

## Color Contrast Check

Large Text (above 18pt) WCAG AA × Fail

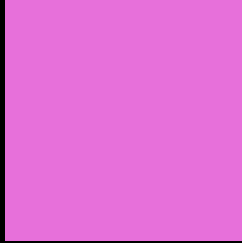
Any Text WCAG AA × Fail

Large Text (above 18pt) WCAG AAA × Fail

Any Text WCAG AAA × Fail



# Black Background



This preview shows how the YUV color 159.6650, 28.7592, 62.5608 looks on a black background.

## Color Contrast Check

Large Text (above 18pt) WCAG AA ✓ Pass

Any Text WCAG AA ✓ Pass

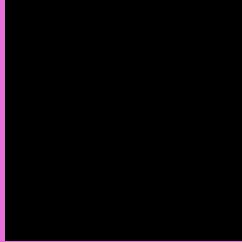
Large Text (above 18pt) WCAG AAA ✓ Pass

Any Text WCAG AAA ✓ Pass

If you want to check with other color combinations, try the [Color Contrast Checker](#).

# YUV 159.6650, 28.7592, 62.5608

## Background



This preview shows how black text looks on a background with the YUV color 159.6650, 28.7592, 62.5608.



This preview shows how white text looks on a background with the YUV color 159.6650, 28.7592, 62.5608.



# Color Blindness Simulation

Color vision deficiency is a very complex topic, and I could not describe the different causes any better than Wikipedia does, so if you want to learn more, you should check out their [article about color blindness](#).

## Dichromacy



### Original Color

159.6650, 28.7592, 62.5608

### Protanopia

154.8210, 48.4022, -31.4150

### Deuteranopia

157.7960, 26.2296, -12.9761



## Tritanopia

159.2350, -9.4829, 55.0449

# Trichromacy



## Original Color

159.6650, 28.7592, 62.5608



## Protanomaly

156.7930, 41.0211, 2.8125



## Deuteranomaly

158.3140, 27.4532, 14.6336



## Tritanomaly

159.2150, 4.3310, 57.6934

# Monochromacy



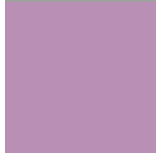
## Original Color

159.6650, 28.7592, 62.5608



## Achromatopsia

160.0000, 0.0000, 0.0000



## Achromatomaly

160.1890, 10.2598, 22.6362

# CSS Examples

## Text

The CSS property to change the color of the text to YUV 159.6650, 28.7592, 62.5608 is called "color". The color property can be set on classes, ids or directly on the HTML element.

This example shows how text in the color `rgb(231, 112, 218)` looks like.

```
.text, #text, p{  
    color:rgb(231, 112, 218)  
}
```

If you want to add a text shadow in that color use the text-shadow property, you can generate a text shadow directly with our [CSS Text Shadow Generator](#).

Here you see how black text with a 4 pixel rgb(231, 112, 218) colored shadow looks like.

```
.shadow{ text-shadow: 4px 4px 2px rgb(231, 112, 218) }
```

## Border

The CSS property to change the border of an element to YUV 159.6650, 28.7592, 62.5608 is called "border". The border property can be set on classes, ids or directly on the HTML element.

This example shows the color as border, it can be applied via the CSS property "border" or "border-color".

```
.border, #border, table{ border:4px solid rgb(231, 112, 218) }
```



If only the border color should be changed use the property border-color.

```
.border{ border-color:rgb(231, 112, 218) }
```

If you want to add a box shadow in that color use:

Here you see how a box with a 4 pixel rgb(231, 112, 218) colored shadow looks like.

```
.boxshadow{ -moz-box-shadow:4px 4px 4px  
4px rgb(231, 112, 218); -webkit-box-  
shadow:4px 4px 4px 4px rgb(231, 112, 218);  
box-shadow:4px 4px 4px 4px rgb(231, 112,  
218) }
```

# Background

The CSS property to change the background color of an element to YUV 159.6650, 28.7592, 62.5608 is called "background". The background property can be set on classes, ids or directly on the HTML element.

```
.background, #background, body{  
background: rgb(231, 112, 218) }
```

If only the background color should be changed can be used:

```
.background{ background-color: rgb(231,  
112, 218) }
```

This example shows the color as background, it is applied via the CSS property "background".

To optimize and compress your CSS code, you can use our [online CSS compressor and optimizer](#) based on csstidy. If you want to create a linear or radial gradient as background or border, check our [CSS Gradient Generator](#).

Hey! You found this booklet interesting? Support Converting Colors with the new Membership Option!

The pro membership hides all ads, plus gives you double the colors in the color bucket, and more awesome pro features!

**[Learn more, Memberships starting at \\$2.50/m!](#)**

**Follow me  
on Twitter!**

@ConvertingColor