

Converting Colors

YUV(160.3880, -18.4323,
32.1087)

Have a look what the booklet for
YUV(160.3880, -18.4323, 32.1087)
contains.

YUV(160.3880, -18.4323, 32.1087)	3
<i>Conversions</i>	4
<i>Details</i>	6
<i>Harmonies</i>	12
<i>Previews</i>	24
<i>Color Blindness Simulation</i>	28
<i>CSS Examples</i>	31

Color

**YUV(160.3880, -18.4323,
32.1087)**

Conversions

Conversions Part 1

Format	Color
Hex	C5957B
RGB	197, 149, 123
RGB Percent	77%, 58%, 48%
CMY	0.2275, 0.4157, 0.5176
CMYK	0.00, 0.24, 0.38, 0.23
HSL	21°, 39%, 63%
HSV	21°, 38%, 77%
XYZ	37.3486, 34.7953, 23.4866
YIQ	160.3880, 36.9540, 2.0900

Conversions

Conversions Part 2

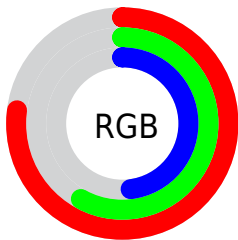
Format	Color
RYB	197, 163, 123
Decimal	12948859
CIELab	65.59, 14.55, 20.73
CIElCh	66, 25.322, 54.932
Yxy	34.7953, 0.3906, 0.3639
Android (android.graphics.Color)	4291138939 (0xFFC5957B)
YUV	160.3880, -18.4323, 32.1087
Hunter-Lab	58.9875, 9.7910, 17.6843

Details

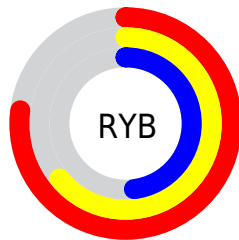
The YUV color **160.3880, -18.4323, 32.1087** is a light color, and the websafe version is hex **CC9966**. A complement of this color would be **159.6120, 18.4323, -32.1087**, and the grayscale version is **161.0000, 0.0000, 0.0000**.

A 20% lighter version of the original color is **215.4700, -19.4587, 34.6678**, and **108.4200, -16.9691, 29.4497** is the 20% darker color. If you saturate the color by 10%, you get **150.4770, -23.4062, 40.8007**, and if you desaturate by 10%, it is **170.2990, -13.4584, 23.4168**.

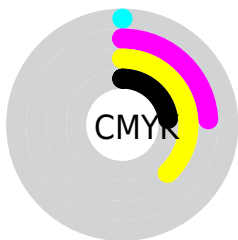
Distribution



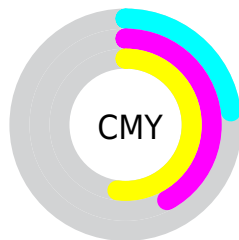
- Red (77%)
- Green (58%)
- Blue (48%)



- Red (77%)
- Yellow (64%)
- Blue (48%)



- Cyan (0%)
- Magenta (24%)
- Yellow (38%)
- Black (23%)



- Cyan (23%)
- Magenta (42%)
- Yellow (52%)

Brightness & Saturation Gradients

These gradients show how the YUV color 160.3880, -18.4323, 32.1087 changes by changing the brightness by 10 percent. The first figure shows a shift by +10% for each color and the second figure -10%.

Similar to the brightness gradients but the following saturation gradients show a change of the YUV color 160.3880, -18.4323, 32.1087 by changing the saturation by 10% instead.

■ 160.3880,
-18.4323, 32.1087

■ 160.3880,
-18.4323, 32.1087

■ 255.0000, 0.0000,
0.0000

■ 133.9040,
-17.7007, 30.7792

■ 215.4700,
-19.4587, 34.6678

■ 108.4200,
-16.9691, 29.4497

■ 234.9840,
-15.7681, 17.5540

■ 83.6370, -16.0900,
27.5054

■ 252.2640,
-10.4832, 2.3995

■ 59.9680, -14.7742,
25.4611

■ 37.4300, -15.4950,
23.3019

■ 16.6560, -8.2114,
20.4727

■ 0.0000, 0.0000,

0.0000

■ 160.3880,
-18.4323, 32.1087

■ 160.3880,
-18.4323, 32.1087

■ 150.4770,
-23.4062, 40.8007

■ 170.2990,
-13.4584, 23.4168

■ 140.6800,
-27.9432, 49.3926

■ 180.0960, -8.9213,
14.8248

■ 131.3560,
-33.2065, 57.5698

■ 189.4200, -3.6581,
6.6477

■ 121.4450,
-38.1804, 66.2617

■ 199.3310, 1.3158,
-2.0443

■ 111.6480,
-42.7175, 74.8537

■ 209.2420, 6.2897,
-10.7362

■ 101.7370,
-47.6913, 83.5457

■ 219.0390, 10.8268,
-19.3282

■ 99.4060, -49.0072,
85.5899

■ 227.6790, 13.4693,
-26.9055

■ 235.3100, 9.7072,
-33.5979

■ 237.6580, 8.5496,
-35.6571

Harmonies

Analogous

The Analogous color harmony consists of three colors that are next to each other on the color wheel.



161.8970, -10.3022, 37.8013



160.3880, -18.4323, 32.1087



158.0890, -21.7359, 18.3389

Triad

The Triadic color harmony groups three colors that are evenly spaced from another and form a triangle on the color wheel.



160.3880, -18.4323, 32.1087



149.9150, 2.0139, -39.3905



161.0270, 19.2137, -2.6547

Complementary

The Complementary color scheme is a pair of colors which are on the opposite of each other on the color wheel.



160.3880, -18.4323, 32.1087



159.6120, 18.4323, -32.1087

Split Complementary

Split-complementary colors differ from the complementary color scheme. The scheme consists of three colors, the original color and two neighbors of the complement color.



156.3120, 23.5102, -27.4606



160.3880, -18.4323, 32.1087



148.4650, 14.5608, -50.3968

Square

The Square scheme is like the rectangle color scheme, but the four colors are evenly spaced on the color wheel.



160.3880, -18.4323, 32.1087



153.2350, -9.9759, -20.3771



150.5610, 22.4014, -45.2190



162.8080, 11.4337, 19.4624

Rectangle

The Rectangle color scheme consists of four colors that form a rectangle on the color wheel.



160.3880, -18.4323, 32.1087



156.6530, -20.5349, 6.4433



150.5610, 22.4014, -45.2190



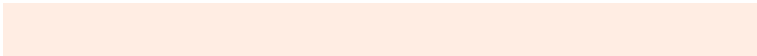
159.2540, 21.5668, -10.7468

Sweetspot

The Sweet Spot groups the original color and five complimentary colors.



160.3880, -18.4323, 32.1087



241.2420, -7.0213, 12.0658



150.5980, 10.0582, 40.6946



119.6050, -4.2423, 7.3624



0.0000, 0.0000, 0.0000



128.0000, 0.0000, 0.0000

Same Dimension

The Same Dimension uses a secret algorithm to generate beautiful new colors.



160.3880, -18.4323, 32.1087



198.4520, -28.8168, 49.5926



182.1070, -29.1398, 13.0612



94.4520, -2.1948, 3.9886



82.1960, -40.5226, 70.8651



18.3950, -9.0687, 15.4396

Inverse Universe

The Inverse Universe completely reimagines the original color for something new.



159.6120, 18.4323, -32.1087



197.1350, 28.5274, -50.1074



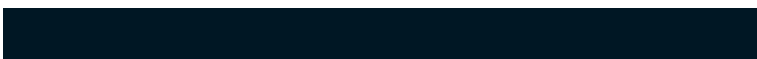
137.8930, 29.1398, -13.0612



94.5480, 2.1948, -3.9886



80.8040, 40.5226, -70.8651



17.6050, 9.0687, -15.4396

Previews

White Background



This preview shows how the YUV color 160.3880, -18.4323, 32.1087 looks on a white background.

Color Contrast Check

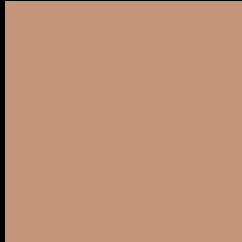
Large Text (above 18pt) WCAG AA × Fail

Any Text WCAG AA × Fail

Large Text (above 18pt) WCAG AAA × Fail

Any Text WCAG AAA × Fail

Black Background



This preview shows how the YUV color 160.3880, -18.4323, 32.1087 looks on a black background.

Color Contrast Check

Large Text (above 18pt) WCAG AA ✓ Pass

Any Text WCAG AA ✓ Pass

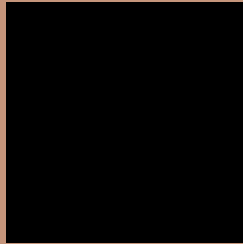
Large Text (above 18pt) WCAG AAA ✓ Pass

Any Text WCAG AAA ✓ Pass

If you want to check with other color combinations, try the [Color Contrast Checker](#).

YUV 160.3880, -18.4323, 32.1087

Background



This preview shows how black text looks on a background with the YUV color 160.3880, -18.4323, 32.1087.



This preview shows how white text looks on a background with the YUV color 160.3880, -18.4323,

Color Blindness Simulation

Color vision deficiency is a very complex topic, and I could not describe the different causes any better than Wikipedia does, so if you want to learn more, you should check out their [article about color blindness](#).

Dichromacy



Original Color

160.3880, -18.4323, 32.1087

Protanopia

158.4560, -15.0148, 9.2471

Deuteranopia

159.6320, -18.5526, 24.0017



Tritanopia

162.1120, -3.0132, 33.2278

Trichromacy



Original Color

160.3880, -18.4323, 32.1087

Protanomaly

158.8700, -16.2049, 17.6540

Deuteranomaly

160.2410, -18.8528, 26.9756

Tritanomaly

161.6190, -8.6862, 32.7831

Monochromacy



Original Color

160.3880, -18.4323, 32.1087

Achromatopsia

160.0000, 0.0000, 0.0000

Achromatomaly

160.0570, -6.4371, 11.3510

CSS Examples

Text

The CSS property to change the color of the text to YUV 160.3880, -18.4323, 32.1087 is called "color". The color property can be set on classes, ids or directly on the HTML element.

This example shows how text in the color `rgb(197, 149, 123)` looks like.

```
.text, #text, p{  
    color:rgb(197, 149, 123)  
}
```

If you want to add a text shadow in that color use the text-shadow property, you can generate a text shadow directly with our [CSS Text Shadow Generator](#).

Here you see how black text with a 4 pixel rgb(197, 149, 123) colored shadow looks like.

```
.shadow{ text-shadow: 4px 4px 2px rgb(197, 149, 123) }
```

Border

The CSS property to change the border of an element to YUV 160.3880, -18.4323, 32.1087 is called "border".

The border property can be set on classes, ids or directly on the HTML element.

This example shows the color as border, it can be applied via the CSS property "border" or "border-color".

```
.border, #border, table{ border:4px solid rgb(197, 149, 123) }
```


If only the border color should be changed use the property `border-color`.

```
.border{ border-color:rgb(197, 149, 123) }
```

If you want to add a box shadow in that color use:

Here you see how a box with a 4 pixel `rgb(197, 149, 123)` colored shadow looks like.

```
.boxshadow{ -moz-box-shadow:4px 4px 4px  
4px rgb(197, 149, 123); -webkit-box-  
shadow:4px 4px 4px 4px rgb(197, 149, 123);  
box-shadow:4px 4px 4px 4px rgb(197, 149,  
123) }
```

Background

The CSS property to change the background color of an element to YUV 160.3880, -18.4323, 32.1087 is called "background". The background property can be set on classes, ids or directly on the HTML element.

```
.background, #background, body{  
background: rgb(197, 149, 123) }
```

If only the background color should be changed can be used:

```
.background{ background-color: rgb(197,  
149, 123) }
```

This example shows the color as background, it is applied via the CSS property "background".

To optimize and compress your CSS code, you can use our [online CSS compressor and optimizer](#) based on csstidy. If you want to create a linear or radial gradient as background or border, check our [CSS Gradient Generator](#).

Hey! You found this booklet interesting? Support Converting Colors with the new Membership Option!

The pro membership hides all ads, plus gives you double the colors in the color bucket, and more awesome pro features!

[Learn more, Memberships starting at \\$2.50/m!](#)

**Follow me
on Twitter!**

@ConvertingColor