

Converting Colors

YUV(160.4110, -9.5696,
82.9546)

Have a look what the booklet for
YUV(160.4110, -9.5696, 82.9546)
contains.

YUV(160.4110, -9.5696, 82.9546)	3
<i>Conversions</i>	4
<i>Details</i>	6
<i>Harmonies</i>	12
<i>Previews</i>	24
<i>Color Blindness Simulation</i>	28
<i>CSS Examples</i>	31

Color

**YUV(160.4110, -9.5696,
82.9546)**

Conversions

Conversions Part 1

Format	Color
Hex	FF748D
RGB	255, 116, 141
RGB Percent	100%, 45%, 55%
CMY	0.0000, 0.5451, 0.4471
CMYK	0.00, 0.55, 0.45, 0.00
HSL	349°, 100%, 73%
HSV	349°, 55%, 100%
XYZ	52.2931, 35.6739, 29.3289
YIQ	160.4110, 74.8190, 37.2430

Conversions

Conversions Part 2

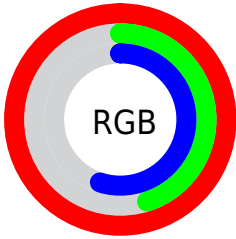
Format	Color
R _Y B	255, 116, 141
Decimal	16741517
CIE Lab	66.27, 55.09, 12.68
CIE LCh	66, 56.534, 12.962
Yxy	35.6739, 0.4458, 0.3041
Android (android.graphics.Color)	4294931597 (0xFFFF748D)
YUV	160.4110, -9.5696, 82.9546
Hunter-Lab	59.7276, 51.7582, 12.6953

Details

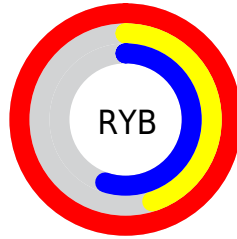
The YUV color **160.4110, -9.5696, 82.9546** is a light color, and the websafe version is hex **FF6699**. A complement of this color would be **210.5890, 9.5696, -82.9546**, and the grayscale version is **160.0000, 0.0000, 0.0000**.

A 20% lighter version of the original color is **199.3250, -2.6252, 48.8270**, and **103.6000, -6.2118, 79.2808** is the 20% darker color. If you saturate the color by 10%, you get **142.7550, -11.2182, 98.4389**, and if you desaturate by 10%, it is **178.0670, -7.9210, 67.4702**.

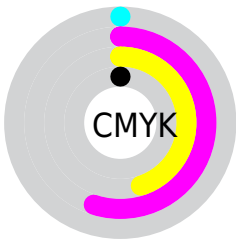
Distribution



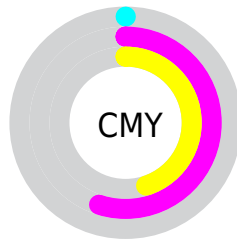
- Red (100%)
- Green (45%)
- Blue (55%)



- Red (100%)
- Yellow (45%)
- Blue (55%)



- Cyan (0%)
- Magenta (55%)
- Yellow (45%)
- Black (0%)



- Cyan (0%)
- Magenta (55%)
- Yellow (45%)

Brightness & Saturation Gradients

These gradients show how the YUV color 160.4110, -9.5696, 82.9546 changes by changing the brightness by 10 percent. The first figure shows a shift by +10% for each color and the second figure -10%.

Similar to the brightness gradients but the following saturation gradients show a change of the YUV color 160.4110, -9.5696, 82.9546 by changing the saturation by 10% instead.

160.4110, -9.5696,
82.9546

160.4110, -9.5696,
82.9546

255.0000, 0.0000,
0.0000

131.8560, -7.8170,
80.8103

199.3250, -2.6252,
48.8270

103.6000, -6.2118,
79.2808

218.9530, 1.5022,
31.6132

73.2240, -2.5754,
79.6106

239.2820, 5.7770,
13.7847

45.3100, 0.3402,
77.7811

34.3590, -4.1210,
61.9522

23.0230, -11.3503,
47.3378

14.8790, -6.3493,

29.9241

■ 0.0000, 0.0000,
0.0000

■ 160.4110, -9.5696,
82.9546

■ 160.4110, -9.5696,
82.9546

■ 142.7550,
-11.2182, 98.4389

■ 178.0670, -7.9210,
67.4702

■ 125.6860,
-13.1562, 113.4084

■ 195.1360, -5.9830,
52.5007

■ 108.0300,
-14.8048, 128.8927

■ 212.7920, -4.3345,
37.0164

■ 90.9610, -16.7428,
143.8622

■ 229.8610, -2.3965,
22.0469

■ 81.4890, -17.4961,
152.1691

■ 246.9300, -0.4585,
7.0774

255.0000, 0.0000,
0.0000

Harmonies

Analogous

The Analogous color harmony consists of three colors that are next to each other on the color wheel.



163.7890, 13.9080, 65.9600



160.4110, -9.5696, 82.9546



159.3950, -32.2397, 74.1986

Triad

The Triadic color harmony groups three colors that are evenly spaced from another and form a triangle on the color wheel.



160.4110, -9.5696, 82.9546



146.8490, -31.4776, -30.5626



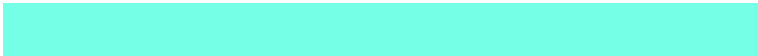
131.7950, 60.7401, -115.5842

Complementary

The Complementary color scheme is a pair of colors which are on the opposite of each other on the color wheel.



160.4110, -9.5696, 82.9546



210.5890, 9.5696, -82.9546

Split Complementary

Split-complementary colors differ from the complementary color scheme. The scheme consists of three colors, the original color and two neighbors of the complement color.



133.5270, 47.0682, -117.1032



160.4110, -9.5696, 82.9546



122.8280, 3.5358, -107.7202

Square

The Square scheme is like the rectangle color scheme, but the four colors are evenly spaced on the color wheel.



160.4110, -9.5696, 82.9546



153.3570, -48.4900, 12.8419



129.9300, 25.6705, -113.9486



154.9940, 49.3030, -40.3367

Rectangle

The Rectangle color scheme consists of four colors that form a rectangle on the color wheel.



160.4110, -9.5696, 82.9546



158.0220, -43.3948, 58.7397



129.9300, 25.6705, -113.9486



133.1000, 58.1247, -116.7287

Sweetspot

The Sweet Spot groups the original color and five complimentary colors.



160.4110, -9.5696, 82.9546



227.1710, -2.5493, 24.4060



165.9320, 43.9105, 56.1876



111.0450, -1.5012, 14.8695



0.0000, 0.0000, 0.0000



128.0000, 0.0000, 0.0000

Same Dimension

The Same Dimension uses a secret algorithm to generate beautiful new colors.



160.4110, -9.5696, 82.9546



142.0540, -11.3656, 99.0536



183.3890, -33.2228, 62.8028



119.1150, -1.0427, 7.7921



60.9850, -13.3036, 114.0232



20.3900, -4.6293, 38.2460

Inverse Universe

The Inverse Universe completely reimagines the original color for something new.



160.4110, -9.5696, 82.9546



142.0540, -11.3656, 99.0536



187.6110, 33.2228, -62.8028



119.1150, -1.0427, 7.7921



60.9850, -13.3036, 114.0232



20.3900, -4.6293, 38.2460

Previews

White Background



This preview shows how the YUV color 160.4110, -9.5696, 82.9546 looks on a white background.

Color Contrast Check

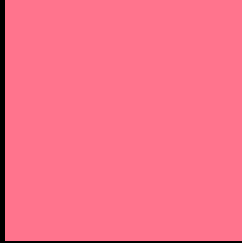
Large Text (above 18pt) WCAG AA × Fail

Any Text WCAG AA × Fail

Large Text (above 18pt) WCAG AAA × Fail

Any Text WCAG AAA × Fail

Black Background



This preview shows how the YUV color 160.4110, -9.5696, 82.9546 looks on a black background.

Color Contrast Check

Large Text (above 18pt) WCAG AA ✓ Pass

Any Text WCAG AA ✓ Pass

Large Text (above 18pt) WCAG AAA ✓ Pass

Any Text WCAG AAA ✓ Pass

If you want to check with other color combinations, try the [Color Contrast Checker](#).

YUV 160.4110, -9.5696, 82.9546

Background



This preview shows how black text looks on a background with the YUV color 160.4110, -9.5696, 82.9546.



This preview shows how white text looks on a background with the YUV color 160.4110, -9.5696,

Color Blindness Simulation

Color vision deficiency is a very complex topic, and I could not describe the different causes any better than Wikipedia does, so if you want to learn more, you should check out their [article about color blindness](#).

Dichromacy



Original Color

160.4110, -9.5696, 82.9546

Protanopia

162.0540, 1.4524, 0.8296

Deuteranopia

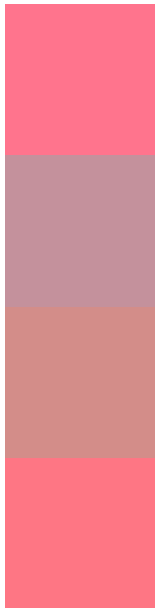
161.9890, -13.3056, 21.0576



Tritanopia

160.2770, -16.4056, 82.1951

Trichromacy



Original Color

160.4110, -9.5696, 82.9546

Protanomaly

161.5030, -2.7130, 30.2539

Deuteranomaly

161.4740, -12.0657, 43.4343

Tritanomaly

160.2600, -13.9322, 82.2100

Monochromacy



Original Color

160.4110, -9.5696, 82.9546

Achromatopsia

160.0000, 0.0000, 0.0000

Achromatomaly

160.2750, -3.5866, 30.4538

CSS Examples

Text

The CSS property to change the color of the text to YUV 160.4110, -9.5696, 82.9546 is called "color". The color property can be set on classes, ids or directly on the HTML element.

This example shows how text in the color `rgb(255, 116, 141)` looks like.

```
.text, #text, p{  
    color:rgb(255, 116, 141)  
}
```

If you want to add a text shadow in that color use the text-shadow property, you can generate a text shadow directly with our [CSS Text Shadow Generator](#).

Here you see how black text with a 4 pixel rgb(255, 116, 141) colored shadow looks like.

```
.shadow{ text-shadow: 4px 4px 2px rgb(255, 116, 141) }
```

Border

The CSS property to change the border of an element to YUV 160.4110, -9.5696, 82.9546 is called "border". The border property can be set on classes, ids or directly on the HTML element.

This example shows the color as border, it can be applied via the CSS property "border" or "border-color".

```
.border, #border, table{ border:4px solid rgb(255, 116, 141) }
```


If only the border color should be changed use the property `border-color`.

```
.border{ border-color:rgb(255, 116, 141) }
```

If you want to add a box shadow in that color use:

Here you see how a box with a 4 pixel `rgb(255, 116, 141)` colored shadow looks like.

```
.boxshadow{ -moz-box-shadow:4px 4px 4px  
4px rgb(255, 116, 141); -webkit-box-  
shadow:4px 4px 4px 4px rgb(255, 116, 141);  
box-shadow:4px 4px 4px 4px rgb(255, 116,  
141) }
```

Background

The CSS property to change the background color of an element to YUV 160.4110, -9.5696, 82.9546 is called "background". The background property can be set on classes, ids or directly on the HTML element.

```
.background, #background, body{  
background: rgb(255, 116, 141) }
```

If only the background color should be changed can be used:

```
.background{ background-color: rgb(255,  
116, 141) }
```

This example shows the color as background, it is applied via the CSS property "background".

To optimize and compress your CSS code, you can use our [online CSS compressor and optimizer](#) based on csstidy. If you want to create a linear or radial gradient as background or border, check our [CSS Gradient Generator](#).

Hey! You found this booklet interesting? Support Converting Colors with the new Membership Option!

The pro membership hides all ads, plus gives you double the colors in the color bucket, and more awesome pro features!

[Learn more, Memberships starting at \\$2.50/m!](#)

**Follow me
on Twitter!**

@ConvertingColor