

Converting Colors

YUV(160.8380, -17.6681,
20.3131)

Have a look what the booklet for
YUV(160.8380, -17.6681, 20.3131)
contains.

YUV(160.8380, -17.6681, 20.3131)	3
<i>Conversions</i>	4
<i>Details</i>	6
<i>Harmonies</i>	12
<i>Previews</i>	24
<i>Color Blindness Simulation</i>	28
<i>CSS Examples</i>	31

Color

**YUV(160.8380, -17.6681,
20.3131)**

Conversions

Conversions Part 1

Format	Color
Hex	B89C7D
RGB	184, 156, 125
RGB Percent	72%, 61%, 49%
CMY	0.2784, 0.3882, 0.5098
CMYK	0.00, 0.15, 0.32, 0.28
HSL	32°, 29%, 61%
HSV	32°, 32%, 72%
XYZ	35.3573, 35.4479, 24.3806
YIQ	160.8380, 26.6390, -3.7050

Conversions

Conversions Part 2

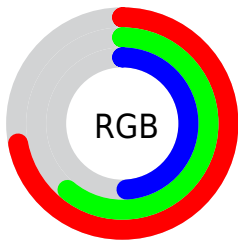
Format	Color
RYB	178, 184, 125
Decimal	12098685
CIELab	66.10, 5.74, 20.10
CIELCh	66, 20.899, 74.070
Yxy	35.4479, 0.3715, 0.3724
Android (android.graphics.Color)	4290288765 (0xFFB89C7D)
YUV	160.8380, -17.6681, 20.3131
Hunter-Lab	59.5382, 1.8121, 17.3977

Details

The YUV color **160.8380, -17.6681, 20.3131** is a light color, and the websafe version is hex **CC9966**. A complement of this color would be **148.1620, 17.6681, -20.3131**, and the grayscale version is **161.0000, 0.0000, 0.0000**.

A 20% lighter version of the original color is **215.6210, -18.5472, 22.2574**, and **109.1690, -16.3523, 18.2688** is the 20% darker color. If you saturate the color by 10%, you get **153.5030, -22.9260, 26.7459**, and if you desaturate by 10%, it is **168.1730, -12.4103, 13.8803**.

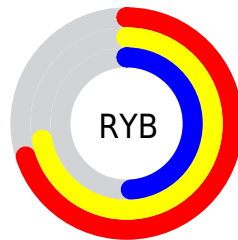
Distribution



Red (72%)

Green (61%)

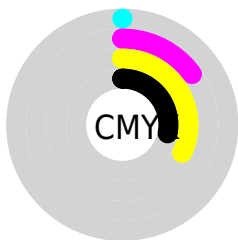
Blue (49%)



Red (70%)

Yellow (72%)

Blue (49%)

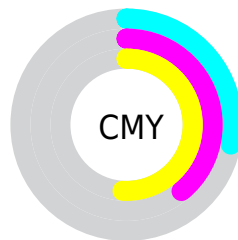


Cyan (0%)

Magenta (15%)

Yellow (32%)

Black (28%)



Cyan (28%)

Magenta (39%)

Yellow (51%)

Brightness & Saturation Gradients

These gradients show how the YUV color 160.8380, -17.6681, 20.3131 changes by changing the brightness by 10 percent. The first figure shows a shift by +10% for each color and the second figure -10%.

Similar to the brightness gradients but the following saturation gradients show a change of the YUV color 160.8380, -17.6681, 20.3131 by changing the saturation by 10% instead.

■ 160.8380,
-17.6681, 20.3131

■ 160.8380,
-17.6681, 20.3131

255.0000, 0.0000,
0.0000

■ 134.6530,
-17.0839, 19.5983

■ 215.6210,
-18.5472, 22.2574

■ 109.1690,
-16.3523, 18.2688

■ 239.9080,
-17.2096, 13.2357

■ 84.6850, -15.6207,
16.9393

■ 252.6060, -9.1728,
2.0995

■ 61.2010, -14.8891,
15.6097

■ 38.6030, -14.5943,
14.3802

■ 19.2590, -9.4947,
12.0509

■ 0.0000, 0.0000,

0.0000

■ 160.8380,
-17.6681, 20.3131

■ 160.8380,
-17.6681, 20.3131

■ 153.5030,
-22.9260, 26.7459

■ 168.1730,
-12.4103, 13.8803

■ 146.6410,
-28.9100, 32.7638

■ 175.0350, -6.4263,
7.8623

■ 139.3060,
-34.1679, 39.1966

■ 182.3700, -1.1684,
1.4295

■ 131.8570,
-39.8625, 45.7294

■ 189.8190, 4.5262,
-5.1033

■ 124.5220,
-45.1203, 52.1622

■ 197.1540, 9.7841,
-11.5361

■ 117.7740,
-50.6676, 58.0802

■ 203.9020, 15.3313,
-17.4541

■ 111.9550,
-55.1938, 63.1835

■ 211.3510, 21.0260,
-23.9868

■ 216.7480, 18.8582,
-28.7200

■ 222.0310, 16.2537,
-33.3532

Harmonies

Analogous

The Analogous color harmony consists of three colors that are next to each other on the color wheel.



162.0440, -13.3327, 29.7794



160.8380, -17.6681, 20.3131



158.8640, -17.1880, 6.2583

Triad

The Triadic color harmony groups three colors that are evenly spaced from another and form a triangle on the color wheel.



160.8380, -17.6681, 20.3131



152.5330, 8.1182, -37.3014



163.5680, 12.0450, 10.0259

Complementary

The Complementary color scheme is a pair of colors which are on the opposite of each other on the color wheel.



160.8380, -17.6681, 20.3131



148.1620, 17.6681, -20.3131

Split Complementary

Split-complementary colors differ from the complementary color scheme. The scheme consists of three colors, the original color and two neighbors of the complement color.



160.6410, 17.9250, -9.3322



160.8380, -17.6681, 20.3131



153.8840, 15.8332, -38.4863

Square

The Square scheme is like the rectangle color scheme, but the four colors are evenly spaced on the color wheel.



160.8380, -17.6681, 20.3131



154.5530, -2.2446, -26.7950



156.8730, 19.2896, -27.0756



163.7780, 3.5604, 24.7507

Rectangle

The Rectangle color scheme consists of four colors that form a rectangle on the color wheel.



160.8380, -17.6681, 20.3131



157.5960, -14.0978, -4.9077



156.8730, 19.2896, -27.0756



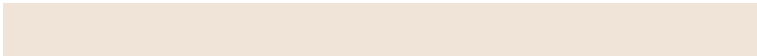
162.8060, 14.3926, 3.6781

Sweetspot

The Sweet Spot groups the original color and five complimentary colors.



160.8380, -17.6681, 20.3131



230.2200, -7.0105, 8.5771



145.9470, 3.9701, 33.3725



114.1810, -4.5262, 5.1033



247.0000, 0.0000, 0.0000



120.0000, 0.0000, 0.0000

Same Dimension

The Same Dimension uses a secret algorithm to generate beautiful new colors.



160.8380, -17.6681, 20.3131



203.7980, -27.0154, 31.7492



176.9750, -25.6237, 5.2839



88.0390, -2.4842, 3.4738



94.7780, -46.7256, 53.6917



17.1770, -8.4683, 9.4918

Inverse Universe

The Inverse Universe completely reimagines the original color for something new.



148.1620, 17.6681, -20.3131



184.6150, 27.3048, -31.2344



132.0250, 25.6237, -5.2839



86.3740, 2.7736, -2.9590



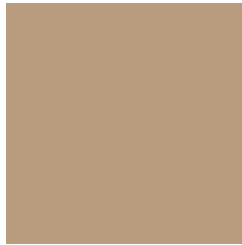
61.2220, 46.7256, -53.6917



10.8230, 8.4683, -9.4918

Previews

White Background



This preview shows how the YUV color 160.8380, -17.6681, 20.3131 looks on a white background.

Color Contrast Check

Large Text (above 18pt) WCAG AA × Fail

Any Text WCAG AA × Fail

Large Text (above 18pt) WCAG AAA × Fail

Any Text WCAG AAA × Fail

Black Background



This preview shows how the YUV color 160.8380, -17.6681, 20.3131 looks on a black background.

Color Contrast Check

Large Text (above 18pt) WCAG AA ✓ Pass

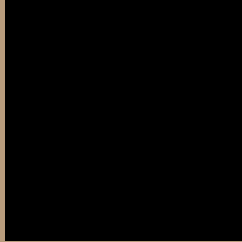
Any Text WCAG AA ✓ Pass

Large Text (above 18pt) WCAG AAA ✓ Pass

Any Text WCAG AAA ✓ Pass

If you want to check with other color combinations, try the [Color Contrast Checker](#).

YUV 160.8380, -17.6681, 20.3131 Background



This preview shows how black text looks on a background with the YUV color 160.8380, -17.6681, 20.3131.



This preview shows how white text looks on a background with the YUV color 160.8380, -17.6681, 20.3131.

Color Blindness Simulation

Color vision deficiency is a very complex topic, and I could not describe the different causes any better than Wikipedia does, so if you want to learn more, you should check out their [article about color blindness](#).

Dichromacy



Original Color

160.8380, -17.6681, 20.3131

Protanopia

160.1140, -16.3252, 9.5470

Deuteranopia

160.8600, -17.6790, 23.8018



Tritanopia

163.4310, -0.2125, 21.5470

Trichromacy



Original Color

160.8380, -17.6681, 20.3131

Protanomaly

160.3210, -16.9203, 13.7505

Deuteranomaly

161.1480, -17.8210, 22.6722

Tritanomaly

162.7100, -6.7590, 21.3023

Monochromacy



Original Color

160.8380, -17.6681, 20.3131

Achromatopsia

161.0000, 0.0000, 0.0000

Achromatomaly

160.7360, -6.2788, 7.2475

CSS Examples

Text

The CSS property to change the color of the text to YUV 160.8380, -17.6681, 20.3131 is called "color". The color property can be set on classes, ids or directly on the HTML element.

This example shows how text in the color `rgb(184, 156, 125)` looks like.

```
.text, #text, p{  
    color:rgb(184, 156, 125)  
}
```

If you want to add a text shadow in that color use the text-shadow property, you can generate a text shadow directly with our [CSS Text Shadow Generator](#).

Here you see how black text with a 4 pixel rgb(184, 156, 125) colored shadow looks like.

```
.shadow{ text-shadow: 4px 4px 2px rgb(184, 156, 125) }
```

Border

The CSS property to change the border of an element to YUV 160.8380, -17.6681, 20.3131 is called "border".

The border property can be set on classes, ids or directly on the HTML element.

This example shows the color as border, it can be applied via the CSS property "border" or "border-color".

```
.border, #border, table{ border:4px solid rgb(184, 156, 125) }
```


If only the border color should be changed use the property `border-color`.

```
.border{ border-color:rgb(184, 156, 125) }
```

If you want to add a box shadow in that color use:

Here you see how a box with a 4 pixel `rgb(184, 156, 125)` colored shadow looks like.

```
.boxshadow{ -moz-box-shadow:4px 4px 4px  
4px rgb(184, 156, 125); -webkit-box-  
shadow:4px 4px 4px 4px rgb(184, 156, 125);  
box-shadow:4px 4px 4px 4px rgb(184, 156,  
125) }
```

Background

The CSS property to change the background color of an element to YUV 160.8380, -17.6681, 20.3131 is called "background". The background property can be set on classes, ids or directly on the HTML element.

```
.background, #background, body{  
background: rgb(184, 156, 125) }
```

If only the background color should be changed can be used:

```
.background{ background-color: rgb(184,  
156, 125) }
```

This example shows the color as background, it is applied via the CSS property "background".

To optimize and compress your CSS code, you can use our [online CSS compressor and optimizer](#) based on csstidy. If you want to create a linear or radial gradient as background or border, check our [CSS Gradient Generator](#).

Hey! You found this booklet interesting? Support Converting Colors with the new Membership Option!

The pro membership hides all ads, plus gives you double the colors in the color bucket, and more awesome pro features!

[Learn more, Memberships starting at \\$2.50/m!](#)

**Follow me
on Twitter!**

@ConvertingColor