

Converting Colors

YUV(161.2470, -7.5168,
77.8364)

Have a look what the booklet for
YUV(161.2470, -7.5168, 77.8364)
contains.

YUV(161.2470, -7.5168, 77.8364)	3
<i>Conversions</i>	4
<i>Details</i>	6
<i>Harmonies</i>	12
<i>Previews</i>	24
<i>Color Blindness Simulation</i>	28
<i>CSS Examples</i>	31

Color

**YUV(161.2470, -7.5168,
77.8364)**

Conversions

Conversions Part 1

Format	Color
Hex	FA7792
RGB	250, 119, 146
RGB Percent	98%, 47%, 57%
CMY	0.0196, 0.5333, 0.4275
CMYK	0.00, 0.52, 0.42, 0.02
HSL	348°, 93%, 72%
HSV	348°, 52%, 98%
XYZ	51.2095, 35.5930, 31.3652
YIQ	161.2470, 69.4090, 36.1690

Conversions

Conversions Part 2

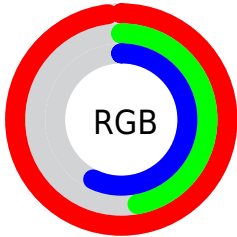
Format	Color
RYB	250, 119, 146
Decimal	16414610
CIELab	66.21, 52.51, 9.65
CIELCh	66, 53.392, 10.414
Yxy	35.5930, 0.4334, 0.3012
Android (android.graphics.Color)	4294604690 (0xFFFA7792)
YUV	161.2470, -7.5168, 77.8364
Hunter-Lab	59.6598, 48.8121, 10.5911

Details

The YUV color **161.2470, -7.5168, 77.8364** is a light color, and the websafe version is hex **FF6699**. A complement of this color would be **207.7530, 7.5168, -77.8364**, and the grayscale version is **161.0000, 0.0000, 0.0000**.

A 20% lighter version of the original color is **201.7700, -0.8726, 46.6827**, and **105.3220, -4.5957, 74.2626** is the 20% darker color. If you saturate the color by 10%, you get **144.2920, -9.0180, 92.7059**, and if you desaturate by 10%, it is **178.2020, -6.0156, 62.9668**.

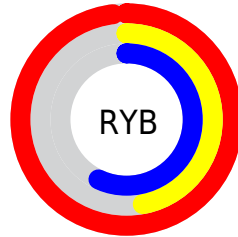
Distribution



Red (98%)

Green (47%)

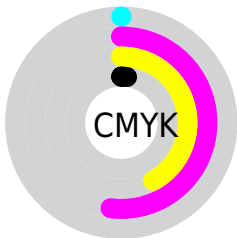
Blue (57%)



Red (98%)

Yellow (47%)

Blue (57%)

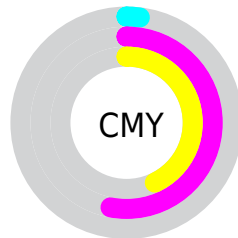


Cyan (0%)

Magenta (52%)

Yellow (42%)

Black (2%)



Cyan (2%)

Magenta (53%)

Yellow (43%)

Brightness & Saturation Gradients

These gradients show how the YUV color 161.2470, -7.5168, 77.8364 changes by changing the brightness by 10 percent. The first figure shows a shift by +10% for each color and the second figure -10%.

Similar to the brightness gradients but the following saturation gradients show a change of the YUV color 161.2470, -7.5168, 77.8364 by changing the saturation by 10% instead.

161.2470, -7.5168,
77.8364

161.2470, -7.5168,
77.8364

255.0000, 0.0000,
0.0000

133.4640, -6.6378,
75.8921

201.7700, -0.8726,
46.6827

105.3220, -4.5957,
74.2626

221.3980, 3.2548,
29.4690

76.5930, -2.2643,
73.1479

241.4990, 6.6560,
11.8404

44.8690, 2.5296,
75.5369

33.8040, -2.3684,
59.8079

22.3540, -10.0345,
45.2935

14.2810, -6.0545,

28.6946

■ 0.0000, 0.0000,
0.0000

■ 161.2470, -7.5168,
77.8364

■ 161.2470, -7.5168,
77.8364

■ 144.2920, -9.0180,
92.7059

■ 178.2020, -6.0156,
62.9668

■ 127.3370,
-10.5191, 107.5755

■ 195.1570, -4.5144,
48.0973

■ 110.3820,
-12.0203, 122.4450

■ 212.1120, -3.0132,
33.2278

■ 93.5410, -13.0847,
137.2145

■ 228.9530, -1.9488,
18.4582

■ 80.6780, -14.1383,
148.4954

■ 245.9080, -0.4476,
3.5887

253.5050, 0.7370,
-3.0739

Harmonies

Analogous

The Analogous color harmony consists of three colors that are next to each other on the color wheel.



164.2720, 14.6559, 59.3975



161.2470, -7.5168, 77.8364



159.5950, -28.8873, 72.2692

Triad

The Triadic color harmony groups three colors that are evenly spaced from another and form a triangle on the color wheel.



161.2470, -7.5168, 77.8364



148.8820, -31.4938, -25.3295



131.3390, 58.9929, -115.1843

Complementary

The Complementary color scheme is a pair of colors which are on the opposite of each other on the color wheel.



161.2470, -7.5168, 77.8364



207.7530, 7.5168, -77.8364

Split Complementary

Split-complementary colors differ from the complementary color scheme. The scheme consists of three colors, the original color and two neighbors of the complement color.



132.7290, 44.0106, -116.4033



161.2470, -7.5168, 77.8364



132.3640, -2.6445, -85.3882

Square

The Square scheme is like the rectangle color scheme, but the four colors are evenly spaced on the color wheel.



161.2470, -7.5168, 77.8364



154.6500, -46.1695, 15.2159



128.7730, 23.7759, -112.9339



154.6840, 49.4558, -42.6959

Rectangle

The Rectangle color scheme consists of four colors that form a rectangle on the color wheel.



161.2470, -7.5168, 77.8364



158.9340, -39.9005, 57.9399



128.7730, 23.7759, -112.9339



132.3020, 55.0671, -116.0289

Sweetspot

The Sweet Spot groups the original color and five complimentary colors.



161.2470, -7.5168, 77.8364



227.2850, -2.1125, 24.3061



164.7310, 42.0376, 50.2249



111.0450, -1.5012, 14.8695



0.0000, 0.0000, 0.0000



128.0000, 0.0000, 0.0000

Same Dimension

The Same Dimension uses a secret algorithm to generate beautiful new colors.



161.2470, -7.5168, 77.8364



145.9010, -9.3182, 95.6798



179.8880, -30.0178, 61.4882



116.2290, -0.6059, 7.6922



60.9570, -10.8248, 112.2937



19.7210, -3.3135, 36.2017

Inverse Universe

The Inverse Universe completely reimagines the original color for something new.



161.2470, -7.5168, 77.8364



145.9010, -9.3182, 95.6798



189.1120, 30.0178, -61.4882



116.2290, -0.6059, 7.6922



60.9570, -10.8248, 112.2937



19.7210, -3.3135, 36.2017

Previews

White Background



This preview shows how the YUV color 161.2470, -7.5168, 77.8364 looks on a white background.

Color Contrast Check

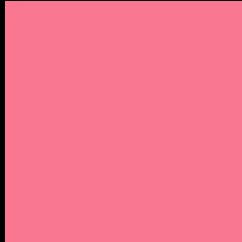
Large Text (above 18pt) WCAG AA × Fail

Any Text WCAG AA × Fail

Large Text (above 18pt) WCAG AAA × Fail

Any Text WCAG AAA × Fail

Black Background



This preview shows how the YUV color 161.2470, -7.5168, 77.8364 looks on a black background.

Color Contrast Check

Large Text (above 18pt) WCAG AA ✓ Pass

Any Text WCAG AA ✓ Pass

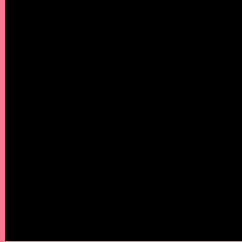
Large Text (above 18pt) WCAG AAA ✓ Pass

Any Text WCAG AAA ✓ Pass

If you want to check with other color combinations, try the [Color Contrast Checker](#).

YUV 161.2470, -7.5168, 77.8364

Background



This preview shows how black text looks on a background with the YUV color 161.2470, -7.5168, 77.8364.



This preview shows how white text looks on a background with the YUV color 161.2470, -7.5168,

77.8364.

Color Blindness Simulation

Color vision deficiency is a very complex topic, and I could not describe the different causes any better than Wikipedia does, so if you want to learn more, you should check out their [article about color blindness](#).

Dichromacy



Original Color

161.2470, -7.5168, 77.8364

Protanopia

161.6240, 3.6364, 0.3298

Deuteranopia

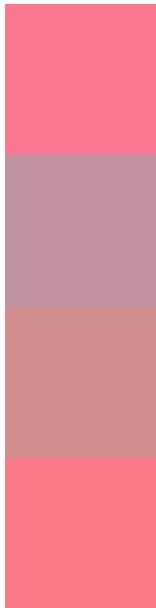
162.2600, -10.9742, 19.9430



Tritanopia

160.8850, -15.2263, 77.2769

Trichromacy



Original Color

161.2470, -7.5168, 77.8364

Protanomaly

161.4750, -0.2342, 28.5244

Deuteranomaly

162.0330, -9.8763, 41.1901

Tritanomaly

160.9820, -12.3161, 77.1918

Monochromacy



Original Color

161.2470, -7.5168, 77.8364

Achromatopsia

161.0000, 0.0000, 0.0000

Achromatomaly

161.1930, -2.5601, 27.8947

CSS Examples

Text

The CSS property to change the color of the text to YUV 161.2470, -7.5168, 77.8364 is called "color". The color property can be set on classes, ids or directly on the HTML element.

This example shows how text in the color `rgb(250, 119, 146)` looks like.

```
.text, #text, p{  
    color:rgb(250, 119, 146)  
}
```

If you want to add a text shadow in that color use the text-shadow property, you can generate a text shadow directly with our [CSS Text Shadow Generator](#).

Here you see how black text with a 4 pixel rgb(250, 119, 146) colored shadow looks like.

```
.shadow{ text-shadow: 4px 4px 2px rgb(250, 119, 146) }
```

Border

The CSS property to change the border of an element to YUV 161.2470, -7.5168, 77.8364 is called "border". The border property can be set on classes, ids or directly on the HTML element.

This example shows the color as border, it can be applied via the CSS property "border" or "border-color".

```
.border, #border, table{ border:4px solid rgb(250, 119, 146) }
```


If only the border color should be changed use the property `border-color`.

```
.border{ border-color:rgb(250, 119, 146) }
```

If you want to add a box shadow in that color use:

Here you see how a box with a 4 pixel `rgb(250, 119, 146)` colored shadow looks like.

```
.boxshadow{ -moz-box-shadow:4px 4px 4px  
4px rgb(250, 119, 146); -webkit-box-  
shadow:4px 4px 4px 4px rgb(250, 119, 146);  
box-shadow:4px 4px 4px 4px rgb(250, 119,  
146) }
```

Background

The CSS property to change the background color of an element to YUV 161.2470, -7.5168, 77.8364 is called "background". The background property can be set on classes, ids or directly on the HTML element.

```
.background, #background, body{  
background: rgb(250, 119, 146) }
```

If only the background color should be changed can be used:

```
.background{ background-color: rgb(250,  
119, 146) }
```

This example shows the color as background, it is applied via the CSS property "background".

To optimize and compress your CSS code, you can use our [online CSS compressor and optimizer](#) based on csstidy. If you want to create a linear or radial gradient as background or border, check our [CSS Gradient Generator](#).

Hey! You found this booklet interesting? Support Converting Colors with the new Membership Option!

The pro membership hides all ads, plus gives you double the colors in the color bucket, and more awesome pro features!

[Learn more, Memberships starting at \\$2.50/m!](#)

**Follow me
on Twitter!**

@ConvertingColor