

Converting Colors

YUV(161.5340, -16.5323,
29.3497)

Have a look what the booklet for
YUV(161.5340, -16.5323, 29.3497)
contains.

YUV(161.5340, -16.5323, 29.3497)	3
<i>Conversions</i>	4
<i>Details</i>	6
<i>Harmonies</i>	12
<i>Previews</i>	24
<i>Color Blindness Simulation</i>	28
<i>CSS Examples</i>	31

Color

**YUV(161.5340, -16.5323,
29.3497)**

Conversions

Conversions Part 1

Format	Color
Hex	C39780
RGB	195, 151, 128
RGB Percent	76%, 59%, 50%
CMY	0.2353, 0.4078, 0.4980
CMYK	0.00, 0.23, 0.34, 0.24
HSL	21°, 36%, 63%
HSV	21°, 34%, 76%
XYZ	37.4686, 35.2938, 25.2597
YIQ	161.5340, 33.6070, 2.1750

Conversions

Conversions Part 2

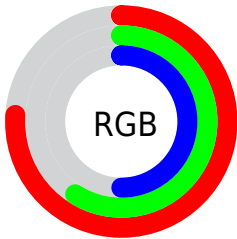
Format	Color
RYB	195, 163, 128
Decimal	12818304
CIELab	65.98, 13.27, 18.45
CIElCh	66, 22.725, 54.275
Yxy	35.2938, 0.3822, 0.3601
Android (android.graphics.Color)	4291008384 (0xFFC39780)
YUV	161.5340, -16.5323, 29.3497
Hunter-Lab	59.4086, 8.6135, 16.3768

Details

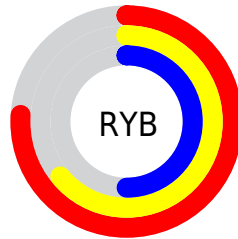
The YUV color **161.5340, -16.5323, 29.3497** is a light color, and the websafe version is hex **CC9999**. A complement of this color would be **161.4660, 16.5323, -29.3497**, and the grayscale version is **162.0000, 0.0000, 0.0000**.

A 20% lighter version of the original color is **216.6160, -17.5587, 31.9088**, and **109.5660, -15.0690, 26.6906** is the 20% darker color. If you saturate the color by 10%, you get **151.7370, -21.0693, 37.9417**, and if you desaturate by 10%, it is **171.4450, -11.5584, 20.6577**.

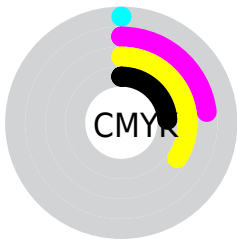
Distribution



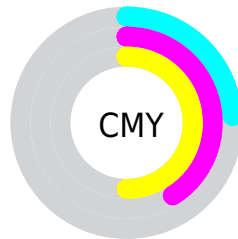
- Red (76%)
- Green (59%)
- Blue (50%)



- Red (76%)
- Yellow (64%)
- Blue (50%)



- Cyan (0%)
- Magenta (23%)
- Yellow (34%)
- Black (24%)



- Cyan (24%)
- Magenta (41%)
- Yellow (50%)

Brightness & Saturation Gradients

These gradients show how the YUV color 161.5340, -16.5323, 29.3497 changes by changing the brightness by 10 percent. The first figure shows a shift by +10% for each color and the second figure -10%.

Similar to the brightness gradients but the following saturation gradients show a change of the YUV color 161.5340, -16.5323, 29.3497 by changing the saturation by 10% instead.

■ 161.5340,
-16.5323, 29.3497

■ 161.5340,
-16.5323, 29.3497

255.0000, 0.0000,
0.0000

■ 135.0500,
-15.8006, 28.0202

■ 216.6160,
-17.5587, 31.9088

■ 109.5660,
-15.0690, 26.6906

■ 236.7280,
-14.1629, 16.0245

■ 84.7830, -14.1900,
24.7463

■ 252.9480, -7.8624,
1.7996

■ 61.2990, -13.4584,
23.4168

■ 39.1030, -12.8688,
20.9577

■ 17.8300, -8.7902,
19.4431

■ 0.0000, 0.0000,

0.0000

■ 161.5340,
-16.5323, 29.3497

■ 161.5340,
-16.5323, 29.3497

■ 151.7370,
-21.0693, 37.9417

■ 171.4450,
-11.5584, 20.6577

■ 141.8260,
-26.0432, 46.6336

■ 181.2420, -7.0213,
12.0658

■ 132.6160,
-30.8697, 54.7108

■ 190.5660, -1.7580,
3.8886

■ 122.7050,
-35.8436, 63.4027

■ 200.3630, 2.7790,
-4.7034

■ 112.9080,
-40.3806, 71.9947

■ 210.2740, 7.7529,
-13.3953

■ 102.9970,
-45.3545, 80.6866

■ 220.0710, 12.2900,
-21.9873

■ 97.6340, -48.1336,
85.3900

■ 228.8420, 12.8959,
-29.6794

■ 235.8860, 9.4232,
-35.8570

■ 237.0600, 8.8444,
-36.8866

Harmonies

Analogous

The Analogous color harmony consists of three colors that are next to each other on the color wheel.



162.6300, -8.6916, 34.5275



161.5340, -16.5323, 29.3497



159.9470, -19.6939, 16.7095

Triad

The Triadic color harmony groups three colors that are evenly spaced from another and form a triangle on the color wheel.



161.5340, -16.5323, 29.3497



152.5350, 1.7082, -34.6722



161.2720, 17.6139, -2.8695

Complementary

The Complementary color scheme is a pair of colors which are on the opposite of each other on the color wheel.



161.5340, -16.5323, 29.3497



161.4660, 16.5323, -29.3497

Split Complementary

Split-complementary colors differ from the complementary color scheme. The scheme consists of three colors, the original color and two neighbors of the complement color.



157.3510, 21.0260, -23.9868



161.5340, -16.5323, 29.3497



151.5260, 12.0657, -43.4343

Square

The Square scheme is like the rectangle color scheme, but the four colors are evenly spaced on the color wheel.



161.5340, -16.5323, 29.3497



155.0720, -9.4025, -17.6031



153.4970, 19.4750, -39.9009



163.7430, 9.9867, 16.8884

Rectangle

The Rectangle color scheme consists of four colors that form a rectangle on the color wheel.



161.5340, -16.5323, 29.3497



158.2230, -18.3509, 5.9434



153.4970, 19.4750, -39.9009



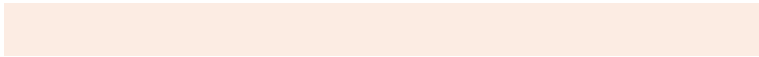
160.6840, 19.3828, -10.2469

Sweetspot

The Sweet Spot groups the original color and five complimentary colors.



161.5340, -16.5323, 29.3497



239.7580, -6.2897, 10.7362



153.1630, 9.7796, 36.6910



119.7190, -3.8055, 7.2624



0.0000, 0.0000, 0.0000



128.0000, 0.0000, 0.0000

Same Dimension

The Same Dimension uses a secret algorithm to generate beautiful new colors.



161.5340, -16.5323, 29.3497



200.3420, -25.3116, 45.3041



180.9050, -26.0822, 12.3613



92.3380, -2.6316, 4.0886



80.4240, -39.6490, 70.6652



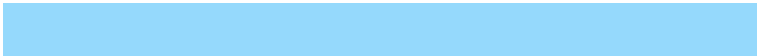
16.3240, -8.0477, 14.6249

Inverse Universe

The Inverse Universe completely reimagines the original color for something new.



161.4660, 16.5323, -29.3497



200.6580, 25.3116, -45.3041



142.0950, 26.0822, -12.3613



92.2490, 2.3422, -4.6034



80.5760, 39.6490, -70.6652



16.6760, 8.0477, -14.6249

Previews

White Background



This preview shows how the YUV color 161.5340, -16.5323, 29.3497 looks on a white background.

Color Contrast Check

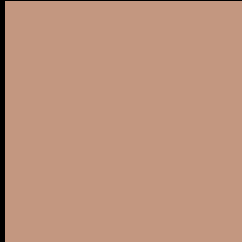
Large Text (above 18pt) WCAG AA × Fail

Any Text WCAG AA × Fail

Large Text (above 18pt) WCAG AAA × Fail

Any Text WCAG AAA × Fail

Black Background



This preview shows how the YUV color 161.5340, -16.5323, 29.3497 looks on a black background.

Color Contrast Check

Large Text (above 18pt) WCAG AA ✓ Pass

Any Text WCAG AA ✓ Pass

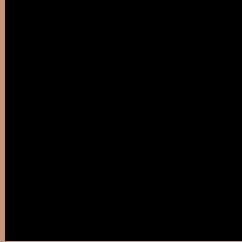
Large Text (above 18pt) WCAG AAA ✓ Pass

Any Text WCAG AAA ✓ Pass

If you want to check with other color combinations, try the [Color Contrast Checker](#).

YUV 161.5340, -16.5323, 29.3497

Background



This preview shows how black text looks on a background with the YUV color 161.5340, -16.5323, 29.3497.



This preview shows how white text looks on a background with the YUV color 161.5340, -16.5323, 29.3497.

Color Blindness Simulation

Color vision deficiency is a very complex topic, and I could not describe the different causes any better than Wikipedia does, so if you want to learn more, you should check out their [article about color blindness](#).

Dichromacy



Original Color

161.5340, -16.5323, 29.3497

Protanopia

159.7980, -13.7044, 8.9472

Deuteranopia

160.7890, -16.6580, 22.9870



Tritanopia

163.5030, -2.7130, 30.2539

Trichromacy



Original Color

161.5340, -16.5323, 29.3497

Protanomaly

160.6140, -14.5997, 16.1245

Deuteranomaly

161.0990, -16.8108, 25.3462

Tritanomaly

162.5370, -7.6597, 30.2241

Monochromacy



Original Color

161.5340, -16.5323, 29.3497

Achromatopsia

162.0000, 0.0000, 0.0000

Achromatomaly

161.8720, -5.8529, 10.6363

CSS Examples

Text

The CSS property to change the color of the text to YUV 161.5340, -16.5323, 29.3497 is called "color". The color property can be set on classes, ids or directly on the HTML element.

This example shows how text in the color `rgb(195, 151, 128)` looks like.

```
.text, #text, p{  
    color:rgb(195, 151, 128)  
}
```

If you want to add a text shadow in that color use the text-shadow property, you can generate a text shadow directly with our [CSS Text Shadow Generator](#).

Here you see how black text with a 4 pixel rgb(195, 151, 128) colored shadow looks like.

```
.shadow{ text-shadow: 4px 4px 2px rgb(195, 151, 128) }
```

Border

The CSS property to change the border of an element to YUV 161.5340, -16.5323, 29.3497 is called "border".

The border property can be set on classes, ids or directly on the HTML element.

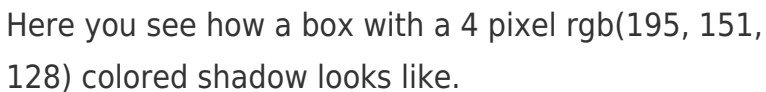
This example shows the color as border, it can be applied via the CSS property "border" or "border-color".

```
.border, #border, table{ border:4px solid rgb(195, 151, 128) }
```


If only the border color should be changed use the property `border-color`.

```
.border{ border-color:rgb(195, 151, 128) }
```

If you want to add a box shadow in that color use:



Here you see how a box with a 4 pixel `rgb(195, 151, 128)` colored shadow looks like.

```
.boxshadow{ -moz-box-shadow:4px 4px 4px 4px rgb(195, 151, 128); -webkit-box-shadow:4px 4px 4px 4px rgb(195, 151, 128); box-shadow:4px 4px 4px 4px rgb(195, 151, 128) }
```

Background

The CSS property to change the background color of an element to YUV 161.5340, -16.5323, 29.3497 is called "background". The background property can be set on classes, ids or directly on the HTML element.

```
.background, #background, body{  
background: rgb(195, 151, 128) }
```

If only the background color should be changed can be used:

```
.background{ background-color: rgb(195,  
151, 128) }
```

This example shows the color as background, it is applied via the CSS property "background".

To optimize and compress your CSS code, you can use our [online CSS compressor and optimizer](#) based on csstidy. If you want to create a linear or radial gradient as background or border, check our [CSS Gradient Generator](#).

Hey! You found this booklet interesting? Support Converting Colors with the new Membership Option!

The pro membership hides all ads, plus gives you double the colors in the color bucket, and more awesome pro features!

[Learn more, Memberships starting at \\$2.50/m!](#)

**Follow me
on Twitter!**

@ConvertingColor