

Converting Colors

YUV(161.8370, -5.8356,
51.8860)

Have a look what the booklet for
YUV(161.8370, -5.8356, 51.8860)
contains.

YUV(161.8370, -5.8356, 51.8860)	3
<i>Conversions</i>	4
<i>Details</i>	6
<i>Harmonies</i>	12
<i>Previews</i>	24
<i>Color Blindness Simulation</i>	28
<i>CSS Examples</i>	31

Color

**YUV(161.8370, -5.8356,
51.8860)**

Conversions

Conversions Part 1

Format	Color
Hex	DD8696
RGB	221, 134, 150
RGB Percent	87%, 53%, 59%
CMY	0.1333, 0.4745, 0.4118
CMYK	0.00, 0.39, 0.32, 0.13
HSL	349°, 56%, 70%
HSV	349°, 39%, 87%
XYZ	43.8489, 34.6244, 33.2262
YIQ	161.8370, 46.7160, 23.4200

Conversions

Conversions Part 2

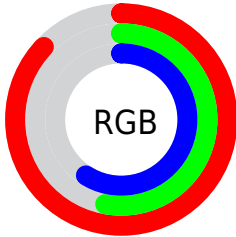
Format	Color
RYB	221, 134, 150
Decimal	14517910
CIELab	65.46, 35.25, 5.79
CIELCh	65, 35.719, 9.330
Yxy	34.6244, 0.3926, 0.3100
Android (android.graphics.Color)	4292707990 (0xFFDD8696)
YUV	161.8370, -5.8356, 51.8860
Hunter-Lab	58.8425, 30.0424, 7.7108

Details

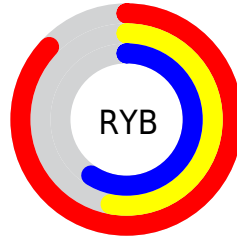
The YUV color **161.8370, -5.8356, 51.8860** is a light color, and the websafe version is hex **FF9999**. A complement of this color would be **193.1630, 5.8356, -51.8860**, and the grayscale version is **162.0000, 0.0000, 0.0000**.

A 20% lighter version of the original color is **209.8570, -2.8875, 39.5904**, and **108.4560, -4.6618, 48.7121** is the 20% darker color. If you saturate the color by 10%, you get **146.8710, -7.3314, 65.0111**, and if you desaturate by 10%, it is **176.8030, -4.3399, 38.7608**.

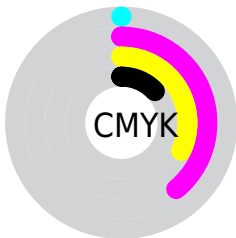
Distribution



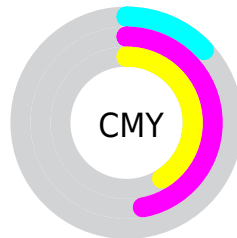
- Red (87%)
- Green (53%)
- Blue (59%)



- Red (87%)
- Yellow (53%)
- Blue (59%)



- Cyan (0%)
- Magenta (39%)
- Yellow (32%)
- Black (13%)



- Cyan (13%)
- Magenta (47%)
- Yellow (41%)

Brightness & Saturation Gradients

These gradients show how the YUV color 161.8370, -5.8356, 51.8860 changes by changing the brightness by 10 percent. The first figure shows a shift by +10% for each color and the second figure -10%.

Similar to the brightness gradients but the following saturation gradients show a change of the YUV color 161.8370, -5.8356, 51.8860 by changing the saturation by 10% instead.

161.8370, -5.8356,
51.8860

161.8370, -5.8356,
51.8860

255.0000, 0.0000,
0.0000

134.9400, -5.3934,
50.0416

209.8570, -2.8875,
39.5904

108.4560, -4.6618,
48.7121

229.4850, 1.2399,
22.3767

83.3740, -3.6354,
46.1530

249.1300, 2.8939,
5.1480

58.0040, -2.4670,
44.7235

30.5140, 0.7326,
45.1532

17.9550, -4.9078,
34.2425

8.7850, -3.8380,

17.7286

■ 0.0000, 0.0000,
0.0000

■ 161.8370, -5.8356,
51.8860

■ 161.8370, -5.8356,
51.8860

■ 146.8710, -7.3314,
65.0111

■ 176.8030, -4.3399,
38.7608

■ 131.9050, -8.8272,
78.1363

■ 191.7690, -2.8441,
25.6356

■ 116.9390,
-10.3229, 91.2615

■ 206.7350, -1.3484,
12.5104

■ 101.9730,
-11.8187, 104.3867

■ 221.7010, 0.1474,
-0.6148

■ 86.4200, -13.0251,
118.0267

■ 237.2540, 1.3538,
-14.2548

■ 71.4540, -14.5208,
131.1518

■ 244.8340, 5.0118,
-20.9024

■ 70.7530, -14.6682,
131.7666

Harmonies

Analogous

The Analogous color harmony consists of three colors that are next to each other on the color wheel.



163.0600, 9.3374, 38.5354



161.8370, -5.8356, 51.8860



160.1560, -19.7969, 49.8522

Triad

The Triadic color harmony groups three colors that are evenly spaced from another and form a triangle on the color wheel.



161.8370, -5.8356, 51.8860



151.8800, -21.6328, -14.8038



145.2950, 35.8436, -63.4027

Complementary

The Complementary color scheme is a pair of colors which are on the opposite of each other on the color wheel.



161.8370, -5.8356, 51.8860



193.1630, 5.8356, -51.8860

Split Complementary

Split-complementary colors differ from the complementary color scheme. The scheme consists of three colors, the original color and two neighbors of the complement color.



130.9890, 33.0364, -96.4604



161.8370, -5.8356, 51.8860



146.2320, -5.5374, -44.0535

Square

The Square scheme is like the rectangle color scheme, but the four colors are evenly spaced on the color wheel.



161.8370, -5.8356, 51.8860



155.5800, -29.8659, 12.6463



137.4140, 15.0789, -76.6621



157.2120, 31.9405, -24.7419

Rectangle

The Rectangle color scheme consists of four colors that form a rectangle on the color wheel.



161.8370, -5.8356, 51.8860



159.2660, -26.7531, 40.9857



137.4140, 15.0789, -76.6621



140.8050, 35.5921, -76.1280

Sweetspot

The Sweet Spot groups the original color and five complimentary colors.



161.8370, -5.8356, 51.8860



233.9530, -1.9488, 18.4582



164.8480, 27.6829, 34.3363



115.7240, -1.3429, 10.7661



0.0000, 0.0000, 0.0000



128.0000, 0.0000, 0.0000

Same Dimension

The Same Dimension uses a secret algorithm to generate beautiful new colors.



161.8370, -5.8356, 51.8860



173.3880, -8.0793, 71.5737



175.2750, -20.3486, 40.1008



102.5170, -0.7479, 6.5626



55.3750, -11.5239, 103.1571



14.6660, -3.2863, 27.4799

Inverse Universe

The Inverse Universe completely reimagines the original color for something new.



161.8370, -5.8356, 51.8860



173.3880, -8.0793, 71.5737



179.7250, 20.3486, -40.1008



102.5170, -0.7479, 6.5626



55.3750, -11.5239, 103.1571



14.6660, -3.2863, 27.4799

Previews

White Background



This preview shows how the YUV color 161.8370, -5.8356, 51.8860 looks on a white background.

Color Contrast Check

Large Text (above 18pt) WCAG AA × Fail

Any Text WCAG AA × Fail

Large Text (above 18pt) WCAG AAA × Fail

Any Text WCAG AAA × Fail

Black Background



This preview shows how the YUV color 161.8370, -5.8356, 51.8860 looks on a black background.

Color Contrast Check

Large Text (above 18pt) WCAG AA ✓ Pass

Any Text WCAG AA ✓ Pass

Large Text (above 18pt) WCAG AAA ✓ Pass

Any Text WCAG AAA ✓ Pass

If you want to check with other color combinations, try the [Color Contrast Checker](#).

YUV 161.8370, -5.8356, 51.8860

Background



This preview shows how black text looks on a background with the YUV color 161.8370, -5.8356, 51.8860.



This preview shows how white text looks on a background with the YUV color 161.8370, -5.8356,

Color Blindness Simulation

Color vision deficiency is a very complex topic, and I could not describe the different causes any better than Wikipedia does, so if you want to learn more, you should check out their [article about color blindness](#).

Dichromacy



Original Color

161.8370, -5.8356, 51.8860

Protanopia

160.1680, 1.8892, 0.7297

Deuteranopia

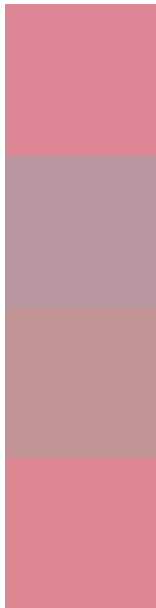
160.6770, -6.7428, 16.0693



Tritanopia

161.8540, -8.3090, 51.8710

Trichromacy



Original Color

161.8370, -5.8356, 51.8860

Protanomaly

160.8930, -0.9332, 19.3878

Deuteranomaly

161.1670, -6.4913, 28.7945

Tritanomaly

162.0820, -7.4354, 51.6711

Monochromacy



Original Color

161.8370, -5.8356, 51.8860

Achromatopsia

162.0000, 0.0000, 0.0000

Achromatomaly

161.9530, -1.9488, 18.4582

CSS Examples

Text

The CSS property to change the color of the text to YUV 161.8370, -5.8356, 51.8860 is called "color". The color property can be set on classes, ids or directly on the HTML element.

This example shows how text in the color `rgb(221, 134, 150)` looks like.

```
.text, #text, p{  
    color:rgb(221, 134, 150)  
}
```

If you want to add a text shadow in that color use the text-shadow property, you can generate a text shadow directly with our [CSS Text Shadow Generator](#).

Here you see how black text with a 4 pixel rgb(221, 134, 150) colored shadow looks like.

```
.shadow{ text-shadow: 4px 4px 2px rgb(221, 134, 150) }
```

Border

The CSS property to change the border of an element to YUV 161.8370, -5.8356, 51.8860 is called "border". The border property can be set on classes, ids or directly on the HTML element.

This example shows the color as border, it can be applied via the CSS property "border" or "border-color".

```
.border, #border, table{ border:4px solid rgb(221, 134, 150) }
```


If only the border color should be changed use the property `border-color`.

```
.border{ border-color:rgb(221, 134, 150) }
```

If you want to add a box shadow in that color use:

Here you see how a box with a 4 pixel `rgb(221, 134, 150)` colored shadow looks like.

```
.boxshadow{ -moz-box-shadow:4px 4px 4px  
4px rgb(221, 134, 150); -webkit-box-  
shadow:4px 4px 4px 4px rgb(221, 134, 150);  
box-shadow:4px 4px 4px 4px rgb(221, 134,  
150) }
```

Background

The CSS property to change the background color of an element to YUV 161.8370, -5.8356, 51.8860 is called "background". The background property can be set on classes, ids or directly on the HTML element.

```
.background, #background, body{  
background: rgb(221, 134, 150) }
```

If only the background color should be changed can be used:

```
.background{ background-color: rgb(221,  
134, 150) }
```

This example shows the color as background, it is applied via the CSS property "background".

To optimize and compress your CSS code, you can use our [online CSS compressor and optimizer](#) based on csstidy. If you want to create a linear or radial gradient as background or border, check our [CSS Gradient Generator](#).

Hey! You found this booklet interesting? Support Converting Colors with the new Membership Option!

The pro membership hides all ads, plus gives you double the colors in the color bucket, and more awesome pro features!

[Learn more, Memberships starting at \\$2.50/m!](#)

**Follow me
on Twitter!**

@ConvertingColor