

Converting Colors

YUV(161.9040, -0.9387,
21.1322)

Have a look what the booklet for
YUV(161.9040, -0.9387, 21.1322)
contains.

YUV(161.9040, -0.9387, 21.1322)	3
<i>Conversions</i>	4
<i>Details</i>	6
<i>Harmonies</i>	12
<i>Previews</i>	24
<i>Color Blindness Simulation</i>	28
<i>CSS Examples</i>	31

Color

**YUV(161.9040, -0.9387,
21.1322)**

Conversions

Conversions Part 1

Format	Color
Hex	BA96A0
RGB	186, 150, 160
RGB Percent	73%, 59%, 63%
CMY	0.2706, 0.4118, 0.3725
CMYK	0.00, 0.19, 0.14, 0.27
HSL	343°, 21%, 66%
HSV	343°, 19%, 73%
XYZ	37.5012, 34.7899, 37.9963
YIQ	161.9040, 18.2460, 10.7420

Conversions

Conversions Part 2

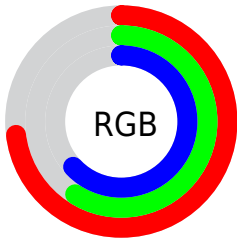
Format	Color
RYB	186, 150, 160
Decimal	12228256
CIELab	65.58, 15.07, -0.14
CIELCh	66, 15.066, 359.454
Yxy	34.7899, 0.3400, 0.3154
Android (android.graphics.Color)	4290418336 (0xFFBA96A0)
YUV	161.9040, -0.9387, 21.1322
Hunter-Lab	58.9829, 10.2698, 3.0939

Details

The YUV color **161.9040, -0.9387, 21.1322** is a light color, and the websafe version is hex **CC9999**. A complement of this color would be **174.0960, 0.9387, -21.1322**, and the grayscale version is **162.0000, 0.0000, 0.0000**.

A 20% lighter version of the original color is **216.6160, -0.7967, 22.2618**, and **110.0070, -0.4965, 19.2879** is the 20% darker color. If you saturate the color by 10%, you get **149.2690, -1.1186, 32.2131**, and if you desaturate by 10%, it is **174.5390, -0.7587, 10.0513**.

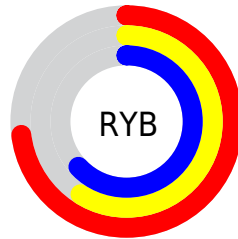
Distribution



Red (73%)

Green (59%)

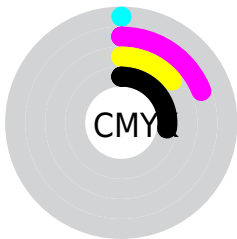
Blue (63%)



Red (73%)

Yellow (59%)

Blue (63%)

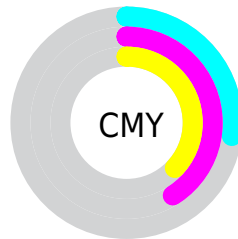


Cyan (0%)

Magenta (19%)

Yellow (14%)

Black (27%)



Cyan (27%)

Magenta (41%)

Yellow (37%)

Brightness & Saturation Gradients

These gradients show how the YUV color 161.9040, -0.9387, 21.1322 changes by changing the brightness by 10 percent. The first figure shows a shift by +10% for each color and the second figure -10%.

Similar to the brightness gradients but the following saturation gradients show a change of the YUV color 161.9040, -0.9387, 21.1322 by changing the saturation by 10% instead.

■ 161.9040, -0.9387,
21.1322

■ 161.9040, -0.9387,
21.1322

■ 255.0000, 0.0000,
0.0000

■ 135.6050, -0.7913,
20.5174

■ 216.6160, -0.7967,
22.2618

■ 110.0070, -0.4965,
19.2879

■ 240.1310, 1.4144,
13.0401

■ 85.5940, -0.7858,
18.7731

■ 61.9960, -0.4910,
17.5435

■ 39.8110, 0.0932,
16.8288

■ 17.9250, 0.5300,
16.7288

■ 0.0000, 0.0000,

0.0000

161.9040, -0.9387,
21.1322

161.9040, -0.9387,
21.1322

149.2690, -1.1186,
32.2131

174.5390, -0.7587,
10.0513

137.1070, -2.0248,
42.8792

186.7010, 0.1474,
-0.6148

124.4720, -2.2047,
53.9601

199.3360, 0.3274,
-11.6957

112.3100, -3.1108,
64.6261

211.4980, 1.2335,
-22.3617

99.6750, -3.2908,
75.7070

224.1330, 1.4134,
-33.4426

86.9260, -3.9075,
86.8879

232.7730, 4.0559,
-41.0199

■ 74.8780, -4.3769,
97.4540

■ 234.2550, 9.7343,
-42.3196

■ 62.2430, -4.5568,
108.5349

■ 234.3690, 10.1711,
-42.4196

■ 61.5420, -4.7042,
109.1497

Harmonies

Analogous

The Analogous color harmony consists of three colors that are next to each other on the color wheel.



161.8690, 5.4876, 13.2699



161.9040, -0.9387, 21.1322



161.6070, -7.2013, 23.1467

Triad

The Triadic color harmony groups three colors that are evenly spaced from another and form a triangle on the color wheel.



161.9040, -0.9387, 21.1322



156.9430, -10.3249, -1.7040



155.8860, 12.8742, -22.7020

Complementary

The Complementary color scheme is a pair of colors which are on the opposite of each other on the color wheel.



161.9040, -0.9387, 21.1322



174.0960, 0.9387, -21.1322

Split Complementary

Split-complementary colors differ from the complementary color scheme. The scheme consists of three colors, the original color and two neighbors of the complement color.



154.7130, 8.5225, -26.9353



161.9040, -0.9387, 21.1322



155.8320, -5.3402, -13.8847

Square

The Square scheme is like the rectangle color scheme, but the four colors are evenly spaced on the color wheel.



161.9040, -0.9387, 21.1322



158.6240, -13.1256, 9.9768



154.4270, 2.2545, -23.1765



158.1800, 13.7153, -12.4359

Rectangle

The Rectangle color scheme consists of four colors that form a rectangle on the color wheel.



161.9040, -0.9387, 21.1322



160.9720, -10.8322, 21.0726



154.4270, 2.2545, -23.1765



155.2340, 11.7166, -24.7612

Sweetspot

The Sweet Spot groups the original color and five complimentary colors.



161.9040, -0.9387, 21.1322



232.6420, -0.3165, 8.2070



161.8780, 11.8921, 12.3850



116.6200, -0.3057, 4.7183



250.0000, 0.0000, 0.0000



122.0000, 0.0000, 0.0000

Same Dimension

The Same Dimension uses a secret algorithm to generate beautiful new colors.



161.9040, -0.9387, 21.1322



205.1550, -1.5554, 32.3131



165.4600, -7.6218, 18.0136



85.9190, -0.4531, 5.3330



51.5460, -4.2132, 91.6062



9.2840, -0.6330, 16.4139

Inverse Universe

The Inverse Universe completely reimagines the original color for something new.



161.9040, -0.9387, 21.1322



205.1550, -1.5554, 32.3131



170.5400, 7.6218, -18.0136



85.9190, -0.4531, 5.3330



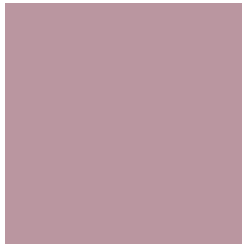
51.5460, -4.2132, 91.6062



9.2840, -0.6330, 16.4139

Previews

White Background



This preview shows how the YUV color 161.9040, -0.9387, 21.1322 looks on a white background.

Color Contrast Check

Large Text (above 18pt) WCAG AA × Fail

Any Text WCAG AA × Fail

Large Text (above 18pt) WCAG AAA × Fail

Any Text WCAG AAA × Fail

Black Background



This preview shows how the YUV color 161.9040, -0.9387, 21.1322 looks on a black background.

Color Contrast Check

Large Text (above 18pt) WCAG AA ✓ Pass

Any Text WCAG AA ✓ Pass

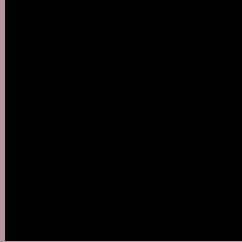
Large Text (above 18pt) WCAG AAA ✓ Pass

Any Text WCAG AAA ✓ Pass

If you want to check with other color combinations, try the [Color Contrast Checker](#).

YUV 161.9040, -0.9387, 21.1322

Background



This preview shows how black text looks on a background with the YUV color 161.9040, -0.9387, 21.1322.



This preview shows how white text looks on a background with the YUV color 161.9040, -0.9387,

Color Blindness Simulation

Color vision deficiency is a very complex topic, and I could not describe the different causes any better than Wikipedia does, so if you want to learn more, you should check out their [article about color blindness](#).

Dichromacy



Original Color

161.9040, -0.9387, 21.1322

Protanopia

160.2820, 2.3260, 0.6297

Deuteranopia

160.8490, -0.9116, 12.4104



Tritanopia

162.0180, -0.5019, 21.0322

Trichromacy



Original Color

161.9040, -0.9387, 21.1322

Protanomaly

160.9840, 0.9939, 7.9070

Deuteranomaly

161.4580, -1.2118, 15.3843

Tritanomaly

162.0180, -0.5019, 21.0322

Monochromacy



Original Color

161.9040, -0.9387, 21.1322

Achromatopsia

162.0000, 0.0000, 0.0000

Achromatomaly

162.2290, -0.6059, 7.6922

CSS Examples

Text

The CSS property to change the color of the text to YUV 161.9040, -0.9387, 21.1322 is called "color". The color property can be set on classes, ids or directly on the HTML element.

This example shows how text in the color `rgb(186, 150, 160)` looks like.

```
.text, #text, p{  
    color:rgb(186, 150, 160)  
}
```

If you want to add a text shadow in that color use the text-shadow property, you can generate a text shadow directly with our [CSS Text Shadow Generator](#).

Here you see how black text with a 4 pixel rgb(186, 150, 160) colored shadow looks like.

```
.shadow{ text-shadow: 4px 4px 2px rgb(186, 150, 160) }
```

Border

The CSS property to change the border of an element to YUV 161.9040, -0.9387, 21.1322 is called "border". The border property can be set on classes, ids or directly on the HTML element.

This example shows the color as border, it can be applied via the CSS property "border" or "border-color".

```
.border, #border, table{ border:4px solid rgb(186, 150, 160) }
```


If only the border color should be changed use the property `border-color`.

```
.border{ border-color:rgb(186, 150, 160) }
```

If you want to add a box shadow in that color use:

Here you see how a box with a 4 pixel `rgb(186, 150, 160)` colored shadow looks like.

```
.boxshadow{ -moz-box-shadow:4px 4px 4px  
4px rgb(186, 150, 160); -webkit-box-  
shadow:4px 4px 4px 4px rgb(186, 150, 160);  
box-shadow:4px 4px 4px 4px rgb(186, 150,  
160) }
```

Background

The CSS property to change the background color of an element to YUV 161.9040, -0.9387, 21.1322 is called "background". The background property can be set on classes, ids or directly on the HTML element.

```
.background, #background, body{  
background: rgb(186, 150, 160) }
```

If only the background color should be changed can be used:

```
.background{ background-color: rgb(186,  
150, 160) }
```

This example shows the color as background, it is applied via the CSS property "background".

To optimize and compress your CSS code, you can use our [online CSS compressor and optimizer](#) based on csstidy. If you want to create a linear or radial gradient as background or border, check our [CSS Gradient Generator](#).

Hey! You found this booklet interesting? Support Converting Colors with the new Membership Option!

The pro membership hides all ads, plus gives you double the colors in the color bucket, and more awesome pro features!

[Learn more, Memberships starting at \\$2.50/m!](#)

**Follow me
on Twitter!**

@ConvertingColor