

Converting Colors

YUV(161.9110, -4.8861,
27.2651)

Have a look what the booklet for
YUV(161.9110, -4.8861, 27.2651)
contains.

YUV(161.9110, -4.8861, 27.2651)	3
<i>Conversions</i>	4
<i>Details</i>	6
<i>Harmonies</i>	12
<i>Previews</i>	24
<i>Color Blindness Simulation</i>	28
<i>CSS Examples</i>	31

Color

**YUV(161.9110, -4.8861,
27.2651)**

Conversions

Conversions Part 1

Format	Color
Hex	C19498
RGB	193, 148, 152
RGB Percent	76%, 58%, 60%
CMY	0.2431, 0.4196, 0.4039
CMYK	0.00, 0.23, 0.21, 0.24
HSL	355°, 27%, 67%
HSV	355°, 23%, 76%
XYZ	38.2497, 34.7843, 34.4038
YIQ	161.9110, 25.5360, 10.7840

Conversions

Conversions Part 2

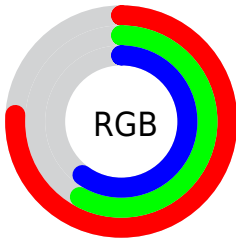
Format	Color
R_{YB}	193, 148, 152
Decimal	12686488
CIE _{Lab}	65.58, 17.51, 4.43
CIE _{LCh}	66, 18.061, 14.213
Yxy	34.7843, 0.3560, 0.3238
Android (android.graphics.Color)	4290876568 (0xFFC19498)
YUV	161.9110, -4.8861, 27.2651
Hunter-Lab	58.9782, 12.5526, 6.6990

Details

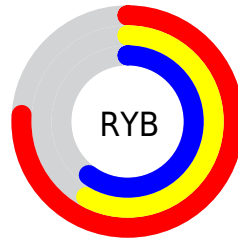
The YUV color **161.9110, -4.8861, 27.2651** is a light color, and the websafe version is hex **CC9999**. A complement of this color would be **179.0890, 4.8861, -27.2651**, and the grayscale version is **162.0000, 0.0000, 0.0000**.

A 20% lighter version of the original color is **216.8080, -5.3283, 29.1094**, and **110.0140, -4.4439, 25.4207** is the 20% darker color. If you saturate the color by 10%, you get **148.7060, -7.2501, 38.8458**, and if you desaturate by 10%, it is **175.1160, -2.5222, 15.6843**.

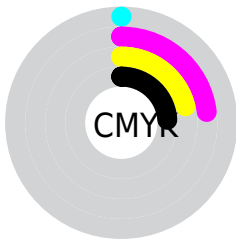
Distribution



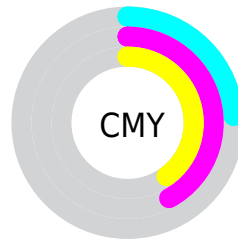
- Red (76%)
- Green (58%)
- Blue (60%)



- Red (76%)
- Yellow (58%)
- Blue (60%)



- Cyan (0%)
- Magenta (23%)
- Yellow (21%)
- Black (24%)



- Cyan (24%)
- Magenta (42%)
- Yellow (40%)

Brightness & Saturation Gradients

These gradients show how the YUV color 161.9110, -4.8861, 27.2651 changes by changing the brightness by 10 percent. The first figure shows a shift by +10% for each color and the second figure -10%.

Similar to the brightness gradients but the following saturation gradients show a change of the YUV color 161.9110, -4.8861, 27.2651 by changing the saturation by 10% instead.

■ 161.9110, -4.8861,
27.2651

■ 161.9110, -4.8861,
27.2651

■ 255.0000, 0.0000,
0.0000

■ 135.3130, -4.5913,
26.0355

■ 216.8080, -5.3283,
29.1094

■ 110.0140, -4.4439,
25.4207

■ 237.9310, -1.9380,
14.9695

■ 85.4160, -4.1491,
24.1912

■ 61.6330, -3.2701,
22.2469

■ 39.0350, -2.9753,
21.0173

■ 16.9210, -3.4121,
21.1173

■ 0.0000, 0.0000,

0.0000

■ 161.9110, -4.8861,
27.2651

■ 161.9110, -4.8861,
27.2651

■ 148.7060, -7.2501,
38.8458

■ 175.1160, -2.5222,
15.6843

■ 135.0280, -8.8878,
50.8414

■ 188.7940, -0.8844,
3.6887

■ 121.8230,
-11.2517, 62.4222

■ 201.9990, 1.4795,
-7.8921

■ 108.7320,
-13.1789, 73.9030

■ 215.0900, 3.4066,
-19.3729

■ 95.5270, -15.5428,
85.4838

■ 228.8820, 5.4812,
-31.4685

■ 81.7350, -17.6174,
97.5794

■ 236.4620, 9.1392,
-38.1162

■ 68.6440, -19.5445,
109.0602

■ 59.6450, -21.0240,
116.9523

Harmonies

Analogous

The Analogous color harmony consists of three colors that are next to each other on the color wheel.



162.5280, 2.6977, 21.4619



161.9110, -4.8861, 27.2651



161.0650, -11.8640, 25.3760

Triad

The Triadic color harmony groups three colors that are evenly spaced from another and form a triangle on the color wheel.



161.9110, -4.8861, 27.2651



155.7140, -9.7190, -9.3962



156.2110, 16.6580, -22.9870

Complementary

The Complementary color scheme is a pair of colors which are on the opposite of each other on the color wheel.



161.9110, -4.8861, 27.2651



179.0890, 4.8861, -27.2651

Split Complementary

Split-complementary colors differ from the complementary color scheme. The scheme consists of three colors, the original color and two neighbors of the complement color.



153.6460, 13.4855, -32.1385



161.9110, -4.8861, 27.2651



153.9880, -1.9661, -22.7915

Square

The Square scheme is like the rectangle color scheme, but the four colors are evenly spaced on the color wheel.



161.9110, -4.8861, 27.2651



158.1350, -14.8566, 5.1436



153.2240, 6.7916, -31.7684



159.5550, 15.0094, -7.5027

Rectangle

The Rectangle color scheme consists of four colors that form a rectangle on the color wheel.



161.9110, -4.8861, 27.2651



160.3480, -14.4686, 20.7428



153.2240, 6.7916, -31.7684



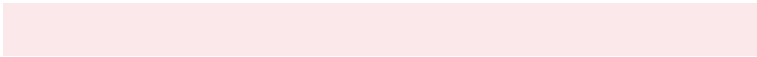
155.6620, 15.9426, -26.8906

Sweetspot

The Sweet Spot groups the original color and five complimentary colors.



161.9110, -4.8861, 27.2651



237.6100, -1.7797, 10.8660



165.3890, 13.6122, 20.7068



118.1040, -1.0373, 6.0478



252.0000, 0.0000, 0.0000



125.0000, 0.0000, 0.0000

Same Dimension

The Same Dimension uses a secret algorithm to generate beautiful new colors.



161.9110, -4.8861, 27.2651



201.6140, -7.6977, 42.4345



172.0210, -11.8424, 18.3986



90.1040, -1.0373, 6.0478



49.7350, -17.6174, 97.5794



10.2090, -3.5540, 19.9877

Inverse Universe

The Inverse Universe completely reimagines the original color for something new.



161.9110, -4.8861, 27.2651



201.6140, -7.6977, 42.4345



168.9790, 11.8424, -18.3986



90.1040, -1.0373, 6.0478



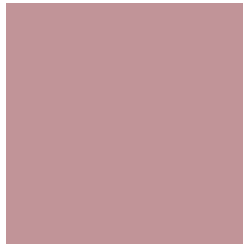
49.7350, -17.6174, 97.5794



10.2090, -3.5540, 19.9877

Previews

White Background



This preview shows how the YUV color 161.9110, -4.8861, 27.2651 looks on a white background.

Color Contrast Check

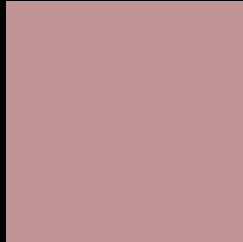
Large Text (above 18pt) WCAG AA × Fail

Any Text WCAG AA × Fail

Large Text (above 18pt) WCAG AAA × Fail

Any Text WCAG AAA × Fail

Black Background



This preview shows how the YUV color 161.9110, -4.8861, 27.2651 looks on a black background.

Color Contrast Check

Large Text (above 18pt) WCAG AA ✓ Pass

Any Text WCAG AA ✓ Pass

Large Text (above 18pt) WCAG AAA ✓ Pass

Any Text WCAG AAA ✓ Pass

If you want to check with other color combinations, try the [Color Contrast Checker](#).

YUV 161.9110, -4.8861, 27.2651

Background



This preview shows how black text looks on a background with the YUV color 161.9110, -4.8861, 27.2651.



This preview shows how white text looks on a background with the YUV color 161.9110, -4.8861,

Color Blindness Simulation

Color vision deficiency is a very complex topic, and I could not describe the different causes any better than Wikipedia does, so if you want to learn more, you should check out their [article about color blindness](#).

Dichromacy



Original Color

161.9110, -4.8861, 27.2651

Protanopia

160.0820, -1.0264, 2.5591

Deuteranopia

160.8340, -4.8482, 15.0546



Tritanopia

162.3070, -2.1234, 27.7948

Trichromacy



Original Color

161.9110, -4.8861, 27.2651

Protanomaly

160.7950, -2.3639, 11.5808

Deuteranomaly

161.1550, -5.0064, 19.1581

Tritanomaly

162.0790, -2.9969, 27.9947

Monochromacy



Original Color

161.9110, -4.8861, 27.2651

Achromatopsia

162.0000, 0.0000, 0.0000

Achromatomaly

161.8980, -1.9217, 9.7365

CSS Examples

Text

The CSS property to change the color of the text to YUV 161.9110, -4.8861, 27.2651 is called "color". The color property can be set on classes, ids or directly on the HTML element.

This example shows how text in the color `rgb(193, 148, 152)` looks like.

```
.text, #text, p{  
    color:rgb(193, 148, 152)  
}
```

If you want to add a text shadow in that color use the text-shadow property, you can generate a text shadow directly with our [CSS Text Shadow Generator](#).

Here you see how black text with a 4 pixel rgb(193, 148, 152) colored shadow looks like.

```
.shadow{ text-shadow: 4px 4px 2px rgb(193, 148, 152) }
```

Border

The CSS property to change the border of an element to YUV 161.9110, -4.8861, 27.2651 is called "border". The border property can be set on classes, ids or directly on the HTML element.

This example shows the color as border, it can be applied via the CSS property "border" or "border-color".

```
.border, #border, table{ border:4px solid rgb(193, 148, 152) }
```


If only the border color should be changed use the property `border-color`.

```
.border{ border-color:rgb(193, 148, 152) }
```

If you want to add a box shadow in that color use:

Here you see how a box with a 4 pixel `rgb(193, 148, 152)` colored shadow looks like.

```
.boxshadow{ -moz-box-shadow:4px 4px 4px  
4px rgb(193, 148, 152); -webkit-box-  
shadow:4px 4px 4px 4px rgb(193, 148, 152);  
box-shadow:4px 4px 4px 4px rgb(193, 148,  
152) }
```

Background

The CSS property to change the background color of an element to YUV 161.9110, -4.8861, 27.2651 is called "background". The background property can be set on classes, ids or directly on the HTML element.

```
.background, #background, body{  
background: rgb(193, 148, 152) }
```

If only the background color should be changed can be used:

```
.background{ background-color: rgb(193,  
148, 152) }
```

This example shows the color as background, it is applied via the CSS property "background".

To optimize and compress your CSS code, you can use our [online CSS compressor and optimizer](#) based on csstidy. If you want to create a linear or radial gradient as background or border, check our [CSS Gradient Generator](#).

Hey! You found this booklet interesting? Support Converting Colors with the new Membership Option!

The pro membership hides all ads, plus gives you double the colors in the color bucket, and more awesome pro features!

[Learn more, Memberships starting at \\$2.50/m!](#)

**Follow me
on Twitter!**

@ConvertingColor