

Converting Colors

YUV(161.9350, -14.7580,
20.2280)

Have a look what the booklet for
YUV(161.9350, -14.7580, 20.2280)
contains.

YUV(161.9350, -14.7580, 20.2280)	3
<i>Conversions</i>	4
<i>Details</i>	6
<i>Harmonies</i>	12
<i>Previews</i>	24
<i>Color Blindness Simulation</i>	28
<i>CSS Examples</i>	31

Color

**YUV(161.9350, -14.7580,
20.2280)**

Conversions

Conversions Part 1

Format	Color
Hex	B99C84
RGB	185, 156, 132
RGB Percent	73%, 61%, 52%
CMY	0.2745, 0.3882, 0.4824
CMYK	0.00, 0.16, 0.29, 0.27
HSL	27°, 27%, 62%
HSV	27°, 29%, 73%
XYZ	36.0609, 35.7572, 26.8310
YIQ	161.9350, 24.9880, -1.3160

Conversions

Conversions Part 2

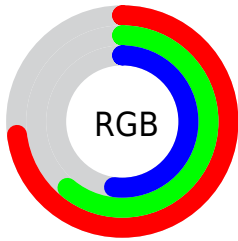
Format	Color
R _Y B	185, 176, 132
Decimal	12164228
CIE Lab	66.33, 7.08, 16.57
CIE LCh	66, 18.016, 66.862
Yxy	35.7572, 0.3655, 0.3625
Android (android.graphics.Color)	4290354308 (0xFFB99C84)
YUV	161.9350, -14.7580, 20.2280
Hunter-Lab	59.7973, 2.9996, 15.2547

Details

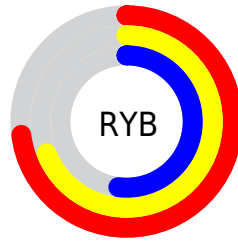
The YUV color **161.9350, -14.7580, 20.2280** is a light color, and the websafe version is hex **CC9999**. A complement of this color would be **155.0650, 14.7580, -20.2280**, and the grayscale version is **162.0000, 0.0000, 0.0000**.

A 20% lighter version of the original color is **216.7180, -15.6370, 22.1723**, and **110.1520, -13.8789, 18.2837** is the 20% darker color. If you saturate the color by 10%, you get **154.0130, -19.7264, 27.1756**, and if you desaturate by 10%, it is **169.9710, -9.3527, 13.1804**.

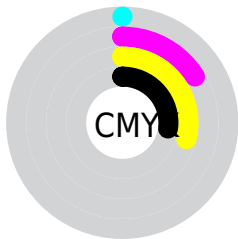
Distribution



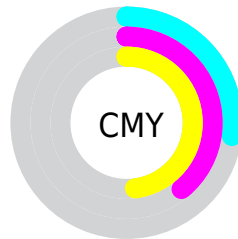
- Red (73%)
- Green (61%)
- Blue (52%)



- Red (73%)
- Yellow (69%)
- Blue (52%)



- Cyan (0%)
- Magenta (16%)
- Yellow (29%)
- Black (27%)



- Cyan (27%)
- Magenta (39%)
- Yellow (48%)

Brightness & Saturation Gradients

These gradients show how the YUV color 161.9350, -14.7580, 20.2280 changes by changing the brightness by 10 percent. The first figure shows a shift by +10% for each color and the second figure -10%.

Similar to the brightness gradients but the following saturation gradients show a change of the YUV color 161.9350, -14.7580, 20.2280 by changing the saturation by 10% instead.

■ 161.9350,
-14.7580, 20.2280

■ 161.9350,
-14.7580, 20.2280

■ 255.0000, 0.0000,
0.0000

■ 135.7500,
-14.1738, 19.5132

■ 216.7180,
-15.6370, 22.1723

■ 110.1520,
-13.8789, 18.2837

■ 240.8200,
-13.7153, 12.4359

■ 85.6680, -13.1473,
16.9542

■ 253.4040, -6.1152,
1.3997

■ 62.1840, -12.4157,
15.6246

■ 39.8140, -11.2473,
14.1951

■ 19.8570, -9.7895,
13.2804

■ 0.0000, 0.0000,

0.0000

■ 161.9350,
-14.7580, 20.2280

■ 161.9350,
-14.7580, 20.2280

■ 154.0130,
-19.7264, 27.1756

■ 169.9710, -9.3527,
13.1804

■ 145.9770,
-25.1317, 34.2232

■ 177.8930, -4.3842,
6.2328

■ 138.0550,
-30.1001, 41.1708

■ 185.9290, 1.0210,
-0.8147

■ 130.0190,
-35.5054, 48.2183

■ 193.8510, 5.9895,
-7.7623

■ 121.5100,
-40.1844, 55.6807

■ 202.4740, 11.1053,
-15.3247

■ 113.4740,
-45.5897, 62.7283

■ 210.3960, 16.0738,
-22.2723

■ 105.5520,
-50.5581, 69.6759

■ 217.6340, 18.4214,
-28.6200

■ 104.6230,
-51.5791, 70.4906

■ 223.5040, 15.5275,
-33.7680

■ 229.3740, 12.6336,
-38.9160

Harmonies

Analogous

The Analogous color harmony consists of three colors that are next to each other on the color wheel.



163.5320, -10.1223, 26.7204



161.9350, -14.7580, 20.2280



160.0430, -15.3042, 8.7323

Triad

The Triadic color harmony groups three colors that are evenly spaced from another and form a triangle on the color wheel.



161.9350, -14.7580, 20.2280



155.3660, 4.7496, -30.1390



163.4210, 11.6244, 4.8928

Complementary

The Complementary color scheme is a pair of colors which are on the opposite of each other on the color wheel.



161.9350, -14.7580, 20.2280



155.0650, 14.7580, -20.2280

Split Complementary

Split-complementary colors differ from the complementary color scheme. The scheme consists of three colors, the original color and two neighbors of the complement color.



160.7610, 15.8938, -11.1914



161.9350, -14.7580, 20.2280



155.5920, 12.0331, -32.9682

Square

The Square scheme is like the rectangle color scheme, but the four colors are evenly spaced on the color wheel.



161.9350, -14.7580, 20.2280



156.1410, -4.0135, -19.4177



157.4880, 16.5214, -25.8610



164.6740, 4.5977, 18.7029

Rectangle

The Rectangle color scheme consists of four colors that form a rectangle on the color wheel.



161.9350, -14.7580, 20.2280



159.1450, -13.3825, -1.0042



157.4880, 16.5214, -25.8610



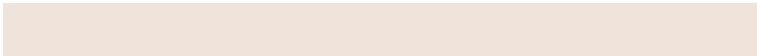
162.8440, 13.3879, -0.7402

Sweetspot

The Sweet Spot groups the original color and five complimentary colors.



161.9350, -14.7580, 20.2280



230.4480, -6.1369, 8.3771



151.1530, 4.8546, 29.6838



114.4090, -3.6526, 4.9033



247.0000, 0.0000, 0.0000



120.0000, 0.0000, 0.0000

Same Dimension

The Same Dimension uses a secret algorithm to generate beautiful new colors.



161.9350, -14.7580, 20.2280



204.2370, -22.7948, 31.3642



177.1970, -22.2821, 6.8432



88.0390, -2.4842, 3.4738



87.7340, -43.2529, 59.8693



16.0030, -7.8895, 10.5214

Inverse Universe

The Inverse Universe completely reimagines the original color for something new.



155.0650, 14.7580, -20.2280



193.7630, 22.7948, -31.3642



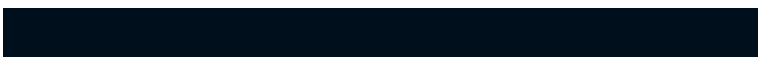
139.8030, 22.2821, -6.8432



86.9610, 2.4842, -3.4738



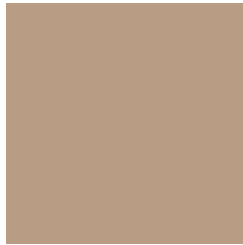
67.6790, 43.5423, -59.3545



11.9970, 7.8895, -10.5214

Previews

White Background



This preview shows how the YUV color 161.9350, -14.7580, 20.2280 looks on a white background.

Color Contrast Check

Large Text (above 18pt) WCAG AA × Fail

Any Text WCAG AA × Fail

Large Text (above 18pt) WCAG AAA × Fail

Any Text WCAG AAA × Fail

Black Background



This preview shows how the YUV color 161.9350, -14.7580, 20.2280 looks on a black background.

Color Contrast Check

Large Text (above 18pt) WCAG AA ✓ Pass

Any Text WCAG AA ✓ Pass

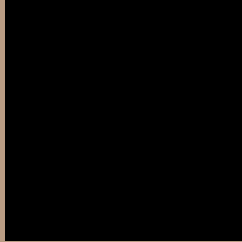
Large Text (above 18pt) WCAG AAA ✓ Pass

Any Text WCAG AAA ✓ Pass

If you want to check with other color combinations, try the [Color Contrast Checker](#).

YUV 161.9350, -14.7580, 20.2280

Background



This preview shows how black text looks on a background with the YUV color 161.9350, -14.7580, 20.2280.



This preview shows how white text looks on a background with the YUV color 161.9350, -14.7580,

Color Blindness Simulation

Color vision deficiency is a very complex topic, and I could not describe the different causes any better than Wikipedia does, so if you want to learn more, you should check out their [article about color blindness](#).

Dichromacy



Original Color

161.9350, -14.7580, 20.2280

Protanopia

160.6130, -13.1202, 8.2324

Deuteranopia

161.9460, -14.7634, 21.9724



Tritanopia

164.3170, -0.6493, 21.6470

Trichromacy



Original Color

161.9350, -14.7580, 20.2280

Protanomaly

160.8200, -13.7153, 12.4359

Deuteranomaly

161.6470, -14.6160, 21.3576

Tritanomaly

163.3510, -5.5960, 21.6172

Monochromacy



Original Color

161.9350, -14.7580, 20.2280

Achromatopsia

162.0000, 0.0000, 0.0000

Achromatomaly

161.9640, -5.4053, 7.0476

CSS Examples

Text

The CSS property to change the color of the text to YUV 161.9350, -14.7580, 20.2280 is called "color". The color property can be set on classes, ids or directly on the HTML element.

This example shows how text in the color `rgb(185, 156, 132)` looks like.

```
.text, #text, p{  
    color:rgb(185, 156, 132)  
}
```

If you want to add a text shadow in that color use the text-shadow property, you can generate a text shadow directly with our [CSS Text Shadow Generator](#).

Here you see how black text with a 4 pixel rgb(185, 156, 132) colored shadow looks like.

```
.shadow{ text-shadow: 4px 4px 2px rgb(185, 156, 132) }
```

Border

The CSS property to change the border of an element to YUV 161.9350, -14.7580, 20.2280 is called "border".

The border property can be set on classes, ids or directly on the HTML element.

This example shows the color as border, it can be applied via the CSS property "border" or "border-color".

```
.border, #border, table{ border:4px solid rgb(185, 156, 132) }
```


If only the border color should be changed use the property `border-color`.

```
.border{ border-color:rgb(185, 156, 132) }
```

If you want to add a box shadow in that color use:

Here you see how a box with a 4 pixel `rgb(185, 156, 132)` colored shadow looks like.

```
.boxshadow{ -moz-box-shadow:4px 4px 4px  
4px rgb(185, 156, 132); -webkit-box-  
shadow:4px 4px 4px 4px rgb(185, 156, 132);  
box-shadow:4px 4px 4px 4px rgb(185, 156,  
132) }
```

Background

The CSS property to change the background color of an element to YUV 161.9350, -14.7580, 20.2280 is called "background". The background property can be set on classes, ids or directly on the HTML element.

```
.background, #background, body{  
background: rgb(185, 156, 132) }
```

If only the background color should be changed can be used:

```
.background{ background-color: rgb(185,  
156, 132) }
```

This example shows the color as background, it is applied via the CSS property "background".

To optimize and compress your CSS code, you can use our [online CSS compressor and optimizer](#) based on csstidy. If you want to create a linear or radial gradient as background or border, check our [CSS Gradient Generator](#).

Hey! You found this booklet interesting? Support Converting Colors with the new Membership Option!

The pro membership hides all ads, plus gives you double the colors in the color bucket, and more awesome pro features!

[Learn more, Memberships starting at \\$2.50/m!](#)

**Follow me
on Twitter!**

@ConvertingColor