

Converting Colors

YUV(162.2070, -7.0041,
53.3155)

Have a look what the booklet for
YUV(162.2070, -7.0041, 53.3155)
contains.

YUV(162.2070, -7.0041, 53.3155)	3
<i>Conversions</i>	4
<i>Details</i>	6
<i>Harmonies</i>	12
<i>Previews</i>	24
<i>Color Blindness Simulation</i>	28
<i>CSS Examples</i>	31

Color

**YUV(162.2070, -7.0041,
53.3155)**

Conversions

Conversions Part 1

Format	Color
Hex	DF8694
RGB	223, 134, 148
RGB Percent	87%, 53%, 58%
CMY	0.1255, 0.4745, 0.4196
CMYK	0.00, 0.40, 0.34, 0.13
HSL	351°, 58%, 70%
HSV	351°, 40%, 87%
XYZ	44.3018, 34.8763, 32.4138
YIQ	162.2070, 48.5500, 23.2220

Conversions

Conversions Part 2

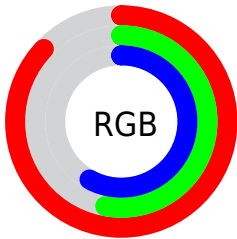
Format	Color
R _Y B	223, 134, 148
Decimal	14648980
CIE Lab	65.65, 35.72, 7.24
CIE LCh	66, 36.448, 11.453
Yxy	34.8763, 0.3970, 0.3125
Android (android.graphics.Color)	4292839060 (0xFFDF8694)
YUV	162.2070, -7.0041, 53.3155
Hunter-Lab	59.0561, 30.5561, 8.7971

Details

The YUV color **162.2070, -7.0041, 53.3155** is a light color, and the websafe version is hex **FF9999**. A complement of this color would be **194.7930, 7.0041, -53.3155**, and the grayscale version is **162.0000, 0.0000, 0.0000**.

A 20% lighter version of the original color is **209.6290, -3.7611, 39.7904**, and **108.5270, -5.6828, 49.5268** is the 20% darker color. If you saturate the color by 10%, you get **147.1270, -8.9366, 66.5406**, and if you desaturate by 10%, it is **177.2870, -5.0715, 40.0903**.

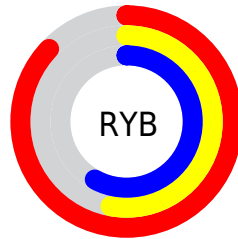
Distribution



Red (87%)

Green (53%)

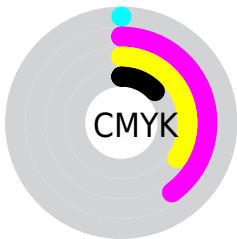
Blue (58%)



Red (87%)

Yellow (53%)

Blue (58%)

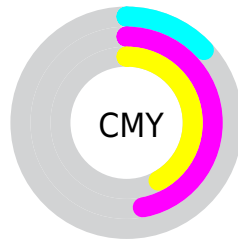


Cyan (0%)

Magenta (40%)

Yellow (34%)

Black (13%)



Cyan (13%)

Magenta (47%)

Yellow (42%)

Brightness & Saturation Gradients

These gradients show how the YUV color 162.2070, -7.0041, 53.3155 changes by changing the brightness by 10 percent. The first figure shows a shift by +10% for each color and the second figure -10%.

Similar to the brightness gradients but the following saturation gradients show a change of the YUV color 162.2070, -7.0041, 53.3155 by changing the saturation by 10% instead.

162.2070, -7.0041,
53.3155

162.2070, -7.0041,
53.3155

255.0000, 0.0000,
0.0000

135.3100, -6.5618,
51.4711

209.6290, -3.7611,
39.7904

108.5270, -5.6828,
49.5268

229.8440, 0.0769,
22.0618

83.4450, -4.6564,
46.9677

249.1300, 2.8939,
5.1480

58.0750, -3.4880,
45.5382

30.5850, -0.2884,
45.9680

17.9120, -6.3656,
35.1572

9.3830, -4.1328,

18.9581

■ 0.0000, 0.0000,
0.0000

■ 162.2070, -7.0041,
53.3155

■ 162.2070, -7.0041,
53.3155

■ 147.1270, -8.9366,
66.5406

■ 177.2870, -5.0715,
40.0903

■ 131.4600,
-10.5798, 80.2806

■ 192.9540, -3.4283,
26.3503

■ 116.4940,
-12.0755, 93.4058

■ 207.9200, -1.9326,
13.2252

■ 101.4140,
-14.0081, 106.6309

■ 223.0000, 0.0000,
0.0000

■ 85.7470, -15.6513,
120.3709

■ 238.0800, 1.9326,
-13.2252

■ 70.6670, -17.5838,
133.5960

■ 245.4320, 4.7170,
-19.6729

Harmonies

Analogous

The Analogous color harmony consists of three colors that are next to each other on the color wheel.



163.8430, 8.4584, 40.4797



162.2070, -7.0041, 53.3155



160.8140, -21.1073, 50.1521

Triad

The Triadic color harmony groups three colors that are evenly spaced from another and form a triangle on the color wheel.



162.2070, -7.0041, 53.3155



151.9830, -21.1906, -16.6481



146.8220, 36.5698, -62.9879

Complementary

The Complementary color scheme is a pair of colors which are on the opposite of each other on the color wheel.



162.2070, -7.0041, 53.3155



194.7930, 7.0041, -53.3155

Split Complementary

Split-complementary colors differ from the complementary color scheme. The scheme consists of three colors, the original color and two neighbors of the complement color.



128.1450, 36.4105, -105.3672



162.2070, -7.0041, 53.3155



145.6660, -3.7793, -47.9421

Square

The Square scheme is like the rectangle color scheme, but the four colors are evenly spaced on the color wheel.



162.2070, -7.0041, 53.3155



156.3410, -30.7341, 11.1019



135.9510, 17.2792, -82.3950



157.6360, 32.2245, -22.4828

Rectangle

The Rectangle color scheme consists of four colors that form a rectangle on the color wheel.



162.2070, -7.0041, 53.3155



159.6250, -27.9161, 40.6709



135.9510, 17.2792, -82.3950



141.1470, 36.9025, -76.4279

Sweetspot

The Sweet Spot groups the original color and five complimentary colors.



162.2070, -7.0041, 53.3155



233.8390, -2.3856, 18.5582



166.2720, 27.9669, 36.5955



115.6100, -1.7797, 10.8660



0.0000, 0.0000, 0.0000



128.0000, 0.0000, 0.0000

Same Dimension

The Same Dimension uses a secret algorithm to generate beautiful new colors.



162.2070, -7.0041, 53.3155



171.6440, -9.6845, 73.1032



178.2210, -21.8010, 39.2712



104.5170, -0.7479, 6.5626



55.8160, -13.7133, 105.4014



15.2640, -3.5812, 28.7095

Inverse Universe

The Inverse Universe completely reimagines the original color for something new.



162.2070, -7.0041, 53.3155



171.6440, -9.6845, 73.1032



178.7790, 21.8010, -39.2712



104.5170, -0.7479, 6.5626



55.8160, -13.7133, 105.4014



15.2640, -3.5812, 28.7095

Previews

White Background



This preview shows how the YUV color 162.2070, -7.0041, 53.3155 looks on a white background.

Color Contrast Check

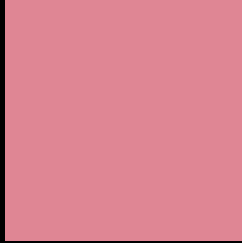
Large Text (above 18pt) WCAG AA × Fail

Any Text WCAG AA × Fail

Large Text (above 18pt) WCAG AAA × Fail

Any Text WCAG AAA × Fail

Black Background



This preview shows how the YUV color 162.2070, -7.0041, 53.3155 looks on a black background.

Color Contrast Check

Large Text (above 18pt) WCAG AA ✓ Pass

Any Text WCAG AA ✓ Pass

Large Text (above 18pt) WCAG AAA ✓ Pass

Any Text WCAG AAA ✓ Pass

If you want to check with other color combinations, try the [Color Contrast Checker](#).

YUV 162.2070, -7.0041, 53.3155

Background



This preview shows how black text looks on a background with the YUV color 162.2070, -7.0041, 53.3155.



This preview shows how white text looks on a background with the YUV color 162.2070, -7.0041,

Color Blindness Simulation

Color vision deficiency is a very complex topic, and I could not describe the different causes any better than Wikipedia does, so if you want to learn more, you should check out their [article about color blindness](#).

Dichromacy



Original Color

162.2070, -7.0041, 53.3155

Protanopia

160.2390, 0.8682, 1.5444

Deuteranopia

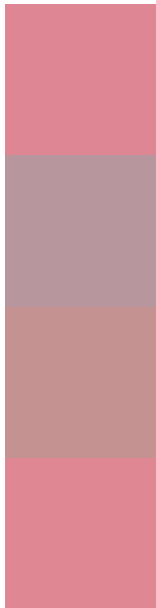
160.9330, -8.3480, 17.5988



Tritanopia

162.4520, -8.6038, 53.1006

Trichromacy



Original Color

162.2070, -7.0041, 53.3155

Protanomaly

160.9640, -1.9543, 20.2026

Deuteranomaly

161.4230, -8.0965, 30.3240

Tritanomaly

162.5660, -8.1670, 53.0006

Monochromacy



Original Color

162.2070, -7.0041, 53.3155

Achromatopsia

162.0000, 0.0000, 0.0000

Achromatomaly

162.1380, -2.5330, 19.1730

CSS Examples

Text

The CSS property to change the color of the text to YUV 162.2070, -7.0041, 53.3155 is called "color". The color property can be set on classes, ids or directly on the HTML element.

This example shows how text in the color `rgb(223, 134, 148)` looks like.

```
.text, #text, p{  
    color:rgb(223, 134, 148)  
}
```

If you want to add a text shadow in that color use the text-shadow property, you can generate a text shadow directly with our [CSS Text Shadow Generator](#).

Here you see how black text with a 4 pixel rgb(223, 134, 148) colored shadow looks like.

```
.shadow{ text-shadow: 4px 4px 2px rgb(223, 134, 148) }
```

Border

The CSS property to change the border of an element to YUV 162.2070, -7.0041, 53.3155 is called "border". The border property can be set on classes, ids or directly on the HTML element.

This example shows the color as border, it can be applied via the CSS property "border" or "border-color".

```
.border, #border, table{ border:4px solid rgb(223, 134, 148) }
```


If only the border color should be changed use the property `border-color`.

```
.border{ border-color:rgb(223, 134, 148) }
```

If you want to add a box shadow in that color use:

Here you see how a box with a 4 pixel `rgb(223, 134, 148)` colored shadow looks like.

```
.boxshadow{ -moz-box-shadow:4px 4px 4px  
4px rgb(223, 134, 148); -webkit-box-  
shadow:4px 4px 4px 4px rgb(223, 134, 148);  
box-shadow:4px 4px 4px 4px rgb(223, 134,  
148) }
```

Background

The CSS property to change the background color of an element to YUV 162.2070, -7.0041, 53.3155 is called "background". The background property can be set on classes, ids or directly on the HTML element.

```
.background, #background, body{  
background: rgb(223, 134, 148) }
```

If only the background color should be changed can be used:

```
.background{ background-color: rgb(223,  
134, 148) }
```

This example shows the color as background, it is applied via the CSS property "background".

To optimize and compress your CSS code, you can use our [online CSS compressor and optimizer](#) based on csstidy. If you want to create a linear or radial gradient as background or border, check our [CSS Gradient Generator](#).

Hey! You found this booklet interesting? Support Converting Colors with the new Membership Option!

The pro membership hides all ads, plus gives you double the colors in the color bucket, and more awesome pro features!

[Learn more, Memberships starting at \\$2.50/m!](#)

**Follow me
on Twitter!**

@ConvertingColor