

Converting Colors

YUV(162.2520, -18.8582,
28.7200)

Have a look what the booklet for
YUV(162.2520, -18.8582, 28.7200)
contains.

YUV(162.2520, -18.8582, 28.7200)	3
<i>Conversions</i>	4
<i>Details</i>	6
<i>Harmonies</i>	12
<i>Previews</i>	24
<i>Color Blindness Simulation</i>	28
<i>CSS Examples</i>	31

Color

**YUV(162.2520, -18.8582,
28.7200)**

Conversions

Conversions Part 1

Format	Color
Hex	C3997C
RGB	195, 153, 124
RGB Percent	76%, 60%, 49%
CMY	0.2353, 0.4000, 0.5137
CMYK	0.00, 0.22, 0.36, 0.24
HSL	25°, 37%, 63%
HSV	25°, 36%, 76%
XYZ	37.5350, 35.8398, 24.0082
YIQ	162.2520, 34.3410, -0.1150

Conversions

Conversions Part 2

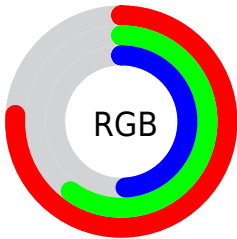
Format	Color
R_{YB}	195, 173, 124
Decimal	12818812
CIE _{Lab}	66.40, 11.67, 21.24
CIE _{LCh}	66, 24.234, 61.205
Yxy	35.8398, 0.3854, 0.3680
Android (android.graphics.Color)	4291008892 (0xFFC3997C)
YUV	162.2520, -18.8582, 28.7200
Hunter-Lab	59.8664, 7.1498, 18.1293

Details

The YUV color **162.2520, -18.8582, 28.7200** is a light color, and the websafe version is hex **CC9966**. A complement of this color would be **156.7480, 18.8582, -28.7200**, and the grayscale version is **162.0000, 0.0000, 0.0000**.

A 20% lighter version of the original color is **217.3340, -19.8847, 31.2791**, and **110.2840, -17.3950, 26.0609** is the 20% darker color. If you saturate the color by 10%, you get **153.0420, -23.6847, 36.7972**, and if you desaturate by 10%, it is **171.5760, -13.5950, 20.5428**.

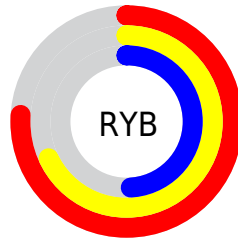
Distribution



Red (76%)

Green (60%)

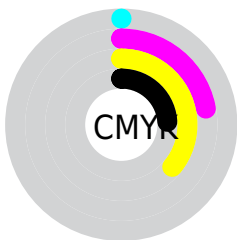
Blue (49%)



Red (76%)

Yellow (68%)

Blue (49%)

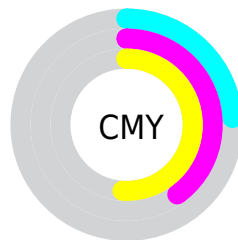


Cyan (0%)

Magenta (22%)

Yellow (36%)

Black (24%)



Cyan (24%)

Magenta (40%)

Yellow (51%)

Brightness & Saturation Gradients

These gradients show how the YUV color 162.2520, -18.8582, 28.7200 changes by changing the brightness by 10 percent. The first figure shows a shift by +10% for each color and the second figure -10%.

Similar to the brightness gradients but the following saturation gradients show a change of the YUV color 162.2520, -18.8582, 28.7200 by changing the saturation by 10% instead.

■ 162.2520,
-18.8582, 28.7200

■ 162.2520,
-18.8582, 28.7200

■ 255.0000, 0.0000,
0.0000

■ 135.7680,
-18.1266, 27.3905

■ 217.3340,
-19.8847, 31.2791

■ 110.2840,
-17.3950, 26.0609

■ 238.0330,
-16.7783, 14.8801

■ 85.5010, -16.5160,
24.1166

■ 252.3780,
-10.0464, 2.2995

■ 62.0170, -15.7844,
22.7871

■ 39.0060, -15.7790,
21.0427

■ 19.2920, -9.5110,
17.2839

■ 0.0000, 0.0000,

0.0000

■ 162.2520,
-18.8582, 28.7200

■ 162.2520,
-18.8582, 28.7200

■ 153.0420,
-23.6847, 36.7972

■ 171.5760,
-13.5950, 20.5428

■ 144.3050,
-29.2374, 44.4595

■ 180.1990, -8.4791,
12.9805

■ 135.0950,
-34.0638, 52.5367

■ 189.5230, -3.2158,
4.8033

■ 126.3580,
-39.6165, 60.1990

■ 198.1460, 1.9000,
-2.7590

■ 117.0340,
-44.8798, 68.3762

■ 207.3560, 6.7265,
-10.8362

■ 108.4110,
-49.9956, 75.9386

■ 216.0930, 12.2792,
-18.4986

■ 105.2650,
-51.8956, 78.6976

■ 224.7330, 14.9216,
-26.0758

■ 231.1900, 11.7383,
-31.7386

■ 237.0600, 8.8444,
-36.8866

Harmonies

Analogous

The Analogous color harmony consists of three colors that are next to each other on the color wheel.



163.5440, -11.6072, 36.3569



162.2520, -18.8582, 28.7200



160.2950, -20.8514, 14.6503

Triad

The Triadic color harmony groups three colors that are evenly spaced from another and form a triangle on the color wheel.



162.2520, -18.8582, 28.7200



152.3000, 4.7821, -40.6051



163.8920, 17.3082, 1.8487

Complementary

The Complementary color scheme is a pair of colors which are on the opposite of each other on the color wheel.



162.2520, -18.8582, 28.7200



156.7480, 18.8582, -28.7200

Split Complementary

Split-complementary colors differ from the complementary color scheme. The scheme consists of three colors, the original color and two neighbors of the complement color.



159.7150, 22.3255, -20.7981



162.2520, -18.8582, 28.7200



151.4160, 15.5709, -47.7228

Square

The Square scheme is like the rectangle color scheme, but the four colors are evenly spaced on the color wheel.



162.2520, -18.8582, 28.7200



155.1960, -7.4916, -23.8509



154.4800, 21.9484, -39.8860



165.1350, 8.8074, 21.8066

Rectangle

The Rectangle color scheme consists of four colors that form a rectangle on the color wheel.



162.2520, -18.8582, 28.7200



158.7880, -18.6295, 1.9399



154.4800, 21.9484, -39.8860



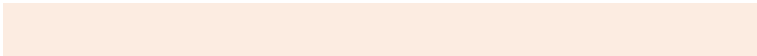
162.4180, 19.5139, -5.6286

Sweetspot

The Sweet Spot groups the original color and five complimentary colors.



162.2520, -18.8582, 28.7200



239.5300, -7.1633, 10.9362



150.1310, 8.3164, 39.3501



120.1920, -4.5317, 6.8476



0.0000, 0.0000, 0.0000



128.0000, 0.0000, 0.0000

Same Dimension

The Same Dimension uses a secret algorithm to generate beautiful new colors.



162.2520, -18.8582, 28.7200



201.1910, -29.6742, 44.5595



182.7970, -28.9869, 10.7020



92.3380, -2.6316, 4.0886



86.8810, -42.8323, 65.0024



18.0850, -8.9159, 13.0805

Inverse Universe

The Inverse Universe completely reimagines the original color for something new.



156.7480, 18.8582, -28.7200



192.3960, 29.3848, -45.0743



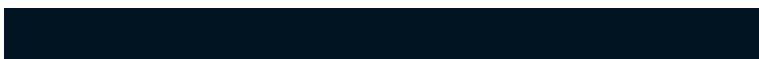
136.2030, 28.9869, -10.7020



91.6620, 2.6316, -4.0886



74.1190, 42.8323, -65.0024



15.5020, 8.6265, -13.5953

Previews

White Background



This preview shows how the YUV color 162.2520, -18.8582, 28.7200 looks on a white background.

Color Contrast Check

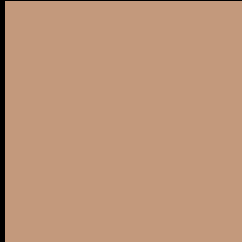
Large Text (above 18pt) WCAG AA × Fail

Any Text WCAG AA × Fail

Large Text (above 18pt) WCAG AAA × Fail

Any Text WCAG AAA × Fail

Black Background



This preview shows how the YUV color 162.2520, -18.8582, 28.7200 looks on a black background.

Color Contrast Check

Large Text (above 18pt) WCAG AA ✓ Pass

Any Text WCAG AA ✓ Pass

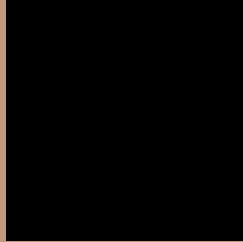
Large Text (above 18pt) WCAG AAA ✓ Pass

Any Text WCAG AAA ✓ Pass

If you want to check with other color combinations, try the [Color Contrast Checker](#).

YUV 162.2520, -18.8582, 28.7200

Background



This preview shows how black text looks on a background with the YUV color 162.2520, -18.8582, 28.7200.



This preview shows how white text looks on a background with the YUV color 162.2520, -18.8582, 28.7200.

28.7200.

Color Blindness Simulation

Color vision deficiency is a very complex topic, and I could not describe the different causes any better than Wikipedia does, so if you want to learn more, you should check out their [article about color blindness](#).

Dichromacy



Original Color

162.2520, -18.8582, 28.7200

Protanopia

160.5270, -16.0358, 10.0618

Deuteranopia

161.9310, -18.7000, 24.6165



Tritanopia

164.5030, -2.7130, 30.2539

Trichromacy



Original Color

162.2520, -18.8582, 28.7200

Protanomaly

161.0440, -16.7837, 16.6244

Deuteranomaly

161.9420, -18.7054, 26.3609

Tritanomaly

163.8960, -8.8227, 29.9092

Monochromacy



Original Color

162.2520, -18.8582, 28.7200

Achromatopsia

162.0000, 0.0000, 0.0000

Achromatomaly

162.2310, -7.0159, 10.3214

CSS Examples

Text

The CSS property to change the color of the text to YUV 162.2520, -18.8582, 28.7200 is called "color". The color property can be set on classes, ids or directly on the HTML element.

This example shows how text in the color `rgb(195, 153, 124)` looks like.

```
.text, #text, p{  
    color:rgb(195, 153, 124)  
}
```

If you want to add a text shadow in that color use the text-shadow property, you can generate a text shadow directly with our [CSS Text Shadow Generator](#).

Here you see how black text with a 4 pixel rgb(195, 153, 124) colored shadow looks like.

```
.shadow{ text-shadow: 4px 4px 2px rgb(195, 153, 124) }
```

Border

The CSS property to change the border of an element to YUV 162.2520, -18.8582, 28.7200 is called "border".

The border property can be set on classes, ids or directly on the HTML element.

This example shows the color as border, it can be applied via the CSS property "border" or "border-color".

```
.border, #border, table{ border:4px solid rgb(195, 153, 124) }
```


If only the border color should be changed use the property `border-color`.

```
.border{ border-color:rgb(195, 153, 124) }
```

If you want to add a box shadow in that color use:

Here you see how a box with a 4 pixel `rgb(195, 153, 124)` colored shadow looks like.

```
.boxshadow{ -moz-box-shadow:4px 4px 4px  
4px rgb(195, 153, 124); -webkit-box-  
shadow:4px 4px 4px 4px rgb(195, 153, 124);  
box-shadow:4px 4px 4px 4px rgb(195, 153,  
124) }
```

Background

The CSS property to change the background color of an element to YUV 162.2520, -18.8582, 28.7200 is called "background". The background property can be set on classes, ids or directly on the HTML element.

```
.background, #background, body{  
background: rgb(195, 153, 124) }
```

If only the background color should be changed can be used:

```
.background{ background-color: rgb(195,  
153, 124) }
```

This example shows the color as background, it is applied via the CSS property "background".

To optimize and compress your CSS code, you can use our [online CSS compressor and optimizer](#) based on csstidy. If you want to create a linear or radial gradient as background or border, check our [CSS Gradient Generator](#).

Hey! You found this booklet interesting? Support Converting Colors with the new Membership Option!

The pro membership hides all ads, plus gives you double the colors in the color bucket, and more awesome pro features!

[Learn more, Memberships starting at \\$2.50/m!](#)

**Follow me
on Twitter!**

@ConvertingColor