

Converting Colors

YUV(162.5410, -17.0287,
48.6375)

Have a look what the booklet for
YUV(162.5410, -17.0287, 48.6375)
contains.

YUV(162.5410, -17.0287, 48.6375)	3
<i>Conversions</i>	4
<i>Details</i>	6
<i>Harmonies</i>	12
<i>Previews</i>	24
<i>Color Blindness Simulation</i>	28
<i>CSS Examples</i>	31

Color

**YUV(162.5410, -17.0287,
48.6375)**

Conversions

Conversions Part 1

Format	Color
Hex	DA8D80
RGB	218, 141, 128
RGB Percent	85%, 55%, 50%
CMY	0.1451, 0.4471, 0.4980
CMYK	0.00, 0.35, 0.41, 0.15
HSL	9°, 55%, 68%
HSV	9°, 41%, 85%
XYZ	42.3346, 35.5137, 25.0456
YIQ	162.5410, 50.0650, 12.2810

Conversions

Conversions Part 2

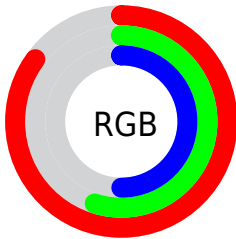
Format	Color
RYB	218, 143, 128
Decimal	14323072
CIELab	66.15, 27.77, 19.09
CIElCh	66, 33.695, 34.509
Yxy	35.5137, 0.4114, 0.3451
Android (android.graphics.Color)	4292513152 (0xFFDA8D80)
YUV	162.5410, -17.0287, 48.6375
Hunter-Lab	59.5934, 22.5164, 16.7972

Details

The YUV color **162.5410, -17.0287, 48.6375** is a light color, and the websafe version is hex **FF9999**. A complement of this color would be **183.4590, 17.0287, -48.6375**, and the grayscale version is **163.0000, 0.0000, 0.0000**.

A 20% lighter version of the original color is **211.3440, -14.9596, 38.2863**, and **109.9750, -15.2707, 44.7489** is the 20% darker color. If you saturate the color by 10%, you get **148.8800, -21.1398, 60.6182**, and if you desaturate by 10%, it is **176.2020, -12.9176, 36.6568**.

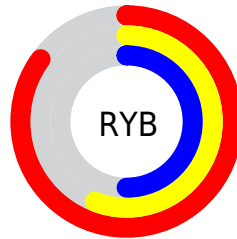
Distribution



Red (85%)

Green (55%)

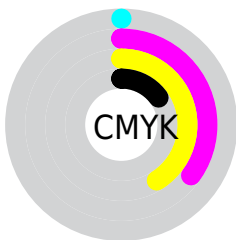
Blue (50%)



Red (85%)

Yellow (56%)

Blue (50%)

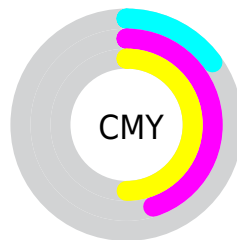


Cyan (0%)

Magenta (35%)

Yellow (41%)

Black (15%)



Cyan (15%)

Magenta (45%)

Yellow (50%)

Brightness & Saturation Gradients

These gradients show how the YUV color 162.5410, -17.0287, 48.6375 changes by changing the brightness by 10 percent. The first figure shows a shift by +10% for each color and the second figure -10%.

Similar to the brightness gradients but the following saturation gradients show a change of the YUV color 162.5410, -17.0287, 48.6375 by changing the saturation by 10% instead.

■ 162.5410,
-17.0287, 48.6375

■ 162.5410,
-17.0287, 48.6375

■ 255.0000, 0.0000,
0.0000

■ 135.7580,
-16.1497, 46.6932

■ 211.3440,
-14.9596, 38.2863

■ 109.9750,
-15.2707, 44.7489

■ 230.8580,
-11.2690, 21.1725

■ 84.8930, -14.2442,
42.1898

■ 251.1870, -6.9942,
3.3440

■ 59.9250, -12.7810,
39.5308

■ 35.6690, -11.1758,
38.0013

■ 15.8470, -7.8126,
32.5832

■ 6.8770, -3.3904,

14.1399

■ 0.0000, 0.0000,
0.0000

■ 162.5410,
-17.0287, 48.6375

■ 162.5410,
-17.0287, 48.6375

■ 148.8800,
-21.1398, 60.6182

■ 176.2020,
-12.9176, 36.6568

■ 135.8060,
-25.5404, 72.0841

■ 189.2760, -8.5171,
25.1909

■ 122.2590,
-29.2147, 83.9649

■ 202.8230, -4.8427,
13.3102

■ 108.5980,
-33.3258, 95.9456

■ 216.4840, -0.7316,
1.3295

■ 95.5240, -37.7263,
107.4115

■ 229.5580, 3.6689,
-10.1364

■ 83.3790, -41.1058,
118.0626

■ 242.7630, 6.0328,
-21.7172

■ 243.9370, 5.4541,
-22.7467

Harmonies

Analogous

The Analogous color harmony consists of three colors that are next to each other on the color wheel.



163.7980, -3.3514, 48.4122



162.5410, -17.0287, 48.6375



160.9450, -26.5949, 36.8822

Triad

The Triadic color harmony groups three colors that are evenly spaced from another and form a triangle on the color wheel.



162.5410, -17.0287, 48.6375



150.2930, -8.0324, -37.0910



157.9620, 31.0777, -28.0307

Complementary

The Complementary color scheme is a pair of colors which are on the opposite of each other on the color wheel.



162.5410, -17.0287, 48.6375



183.4590, 17.0287, -48.6375

Split Complementary

Split-complementary colors differ from the complementary color scheme. The scheme consists of three colors, the original color and two neighbors of the complement color.



147.9100, 33.0754, -62.1881



162.5410, -17.0287, 48.6375



143.5250, 10.0942, -64.4814

Square

The Square scheme is like the rectangle color scheme, but the four colors are evenly spaced on the color wheel.



162.5410, -17.0287, 48.6375



154.7990, -22.0859, -9.4707



139.4810, 26.8779, -81.1058



163.8200, 23.2597, 6.2969

Rectangle

The Rectangle color scheme consists of four colors that form a rectangle on the color wheel.



162.5410, -17.0287, 48.6375



159.1730, -29.1723, 23.5273



139.4810, 26.8779, -81.1058



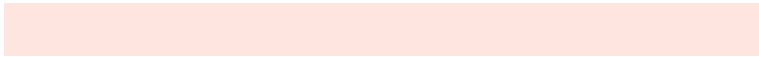
154.5260, 32.2787, -39.9263

Sweetspot

The Sweet Spot groups the original color and five complimentary colors.



162.5410, -17.0287, 48.6375



236.2040, -6.0166, 16.4841



163.8020, 20.8036, 47.5316



116.5560, -3.2321, 10.0364



0.0000, 0.0000, 0.0000



128.0000, 0.0000, 0.0000

Same Dimension

The Same Dimension uses a secret algorithm to generate beautiful new colors.



162.5410, -17.0287, 48.6375



176.5390, -23.9297, 68.8103



188.3690, -29.7619, 25.9864



102.8760, -1.9109, 6.2477



66.4020, -32.7362, 93.4864



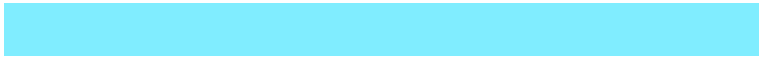
17.8630, -8.8065, 24.6761

Inverse Universe

The Inverse Universe completely reimagines the original color for something new.



183.4590, 17.0287, -48.6375



206.4610, 23.9297, -68.8103



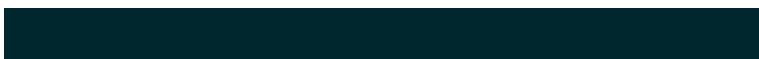
157.6310, 29.7619, -25.9864



105.5370, 2.2003, -5.7329



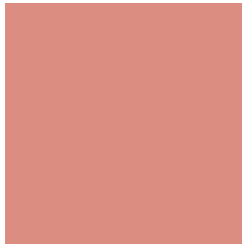
106.5980, 32.7362, -93.4864



28.1370, 8.8065, -24.6761

Previews

White Background



This preview shows how the YUV color 162.5410, -17.0287, 48.6375 looks on a white background.

Color Contrast Check

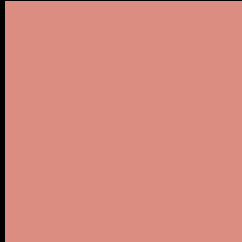
Large Text (above 18pt) WCAG AA × Fail

Any Text WCAG AA × Fail

Large Text (above 18pt) WCAG AAA × Fail

Any Text WCAG AAA × Fail

Black Background



This preview shows how the YUV color 162.5410, -17.0287, 48.6375 looks on a black background.

Color Contrast Check

Large Text (above 18pt) WCAG AA ✓ Pass

Any Text WCAG AA ✓ Pass

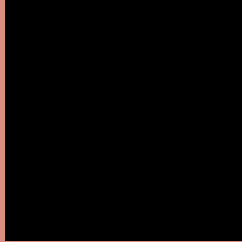
Large Text (above 18pt) WCAG AAA ✓ Pass

Any Text WCAG AAA ✓ Pass

If you want to check with other color combinations, try the [Color Contrast Checker](#).

YUV 162.5410, -17.0287, 48.6375

Background



This preview shows how black text looks on a background with the YUV color 162.5410, -17.0287, 48.6375.



This preview shows how white text looks on a background with the YUV color 162.5410, -17.0287, 48.6375.

Color Blindness Simulation

Color vision deficiency is a very complex topic, and I could not describe the different causes any better than Wikipedia does, so if you want to learn more, you should check out their [article about color blindness](#).

Dichromacy



Original Color

162.5410, -17.0287, 48.6375

Protanopia

160.7700, -11.2256, 7.2177

Deuteranopia

161.7460, -18.1158, 23.9018



Tritanopia

163.6580, -7.7194, 49.4119

Trichromacy



Original Color

162.5410, -17.0287, 48.6375

Protanomaly

161.5870, -13.6004, 22.2872

Deuteranomaly

162.2140, -17.8535, 33.1383

Tritanomaly

163.1480, -10.9190, 48.9822

Monochromacy



Original Color

162.5410, -17.0287, 48.6375

Achromatopsia

163.0000, 0.0000, 0.0000

Achromatomaly

162.8020, -6.3114, 17.7136

CSS Examples

Text

The CSS property to change the color of the text to YUV 162.5410, -17.0287, 48.6375 is called "color". The color property can be set on classes, ids or directly on the HTML element.

This example shows how text in the color `rgb(218, 141, 128)` looks like.

```
.text, #text, p{  
    color:rgb(218, 141, 128)  
}
```

If you want to add a text shadow in that color use the text-shadow property, you can generate a text shadow directly with our [CSS Text Shadow Generator](#).

Here you see how black text with a 4 pixel rgb(218, 141, 128) colored shadow looks like.

```
.shadow{ text-shadow: 4px 4px 2px rgb(218, 141, 128) }
```

Border

The CSS property to change the border of an element to YUV 162.5410, -17.0287, 48.6375 is called "border".

The border property can be set on classes, ids or directly on the HTML element.

This example shows the color as border, it can be applied via the CSS property "border" or "border-color".

```
.border, #border, table{ border:4px solid rgb(218, 141, 128) }
```


If only the border color should be changed use the property `border-color`.

```
.border{ border-color:rgb(218, 141, 128) }
```

If you want to add a box shadow in that color use:

Here you see how a box with a 4 pixel `rgb(218, 141, 128)` colored shadow looks like.

```
.boxshadow{ -moz-box-shadow:4px 4px 4px 4px rgb(218, 141, 128); -webkit-box-shadow:4px 4px 4px 4px rgb(218, 141, 128); box-shadow:4px 4px 4px 4px rgb(218, 141, 128) }
```

Background

The CSS property to change the background color of an element to YUV 162.5410, -17.0287, 48.6375 is called "background". The background property can be set on classes, ids or directly on the HTML element.

```
.background, #background, body{  
background: rgb(218, 141, 128) }
```

If only the background color should be changed can be used:

```
.background{ background-color: rgb(218,  
141, 128) }
```

This example shows the color as background, it is applied via the CSS property "background".

To optimize and compress your CSS code, you can use our [online CSS compressor and optimizer](#) based on csstidy. If you want to create a linear or radial gradient as background or border, check our [CSS Gradient Generator](#).

Hey! You found this booklet interesting? Support Converting Colors with the new Membership Option!

The pro membership hides all ads, plus gives you double the colors in the color bucket, and more awesome pro features!

[Learn more, Memberships starting at \\$2.50/m!](#)

**Follow me
on Twitter!**

@ConvertingColor