

Converting Colors

YUV(162.7740, -20.5946,
25.6312)

Have a look what the booklet for
YUV(162.7740, -20.5946, 25.6312)
contains.

YUV(162.7740, -20.5946, 25.6312)	3
<i>Conversions</i>	4
<i>Details</i>	6
<i>Harmonies</i>	12
<i>Previews</i>	24
<i>Color Blindness Simulation</i>	28
<i>CSS Examples</i>	31

Color

**YUV(162.7740, -20.5946,
25.6312)**

Conversions

Conversions Part 1

Format	Color
Hex	C09C79
RGB	192, 156, 121
RGB Percent	75%, 61%, 47%
CMY	0.2471, 0.3882, 0.5255
CMYK	0.00, 0.19, 0.37, 0.25
HSL	30°, 36%, 61%
HSV	30°, 37%, 75%
XYZ	37.0779, 36.3639, 23.1539
YIQ	162.7740, 32.6910, -3.2530

Conversions

Conversions Part 2

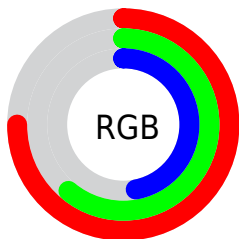
Format	Color
RYB	192, 190, 121
Decimal	12622969
CIELab	66.80, 8.45, 23.38
CIElCh	67, 24.859, 70.116
Yxy	36.3639, 0.3838, 0.3765
Android (android.graphics.Color)	4290813049 (0xFFC09C79)
YUV	162.7740, -20.5946, 25.6312
Hunter-Lab	60.3025, 4.2241, 19.4466

Details

The YUV color **162.7740, -20.5946, 25.6312** is a light color, and the websafe version is hex **CC9966**. A complement of this color would be **150.2260, 20.5946, -25.6312**, and the grayscale version is **163.0000, 0.0000, 0.0000**.

A 20% lighter version of the original color is **217.8560, -21.6210, 28.1903**, and **110.8060, -19.1314, 22.9721** is the 20% darker color. If you saturate the color by 10%, you get **154.7380, -25.9998, 32.6788**, and if you desaturate by 10%, it is **170.8100, -15.1893, 18.5836**.

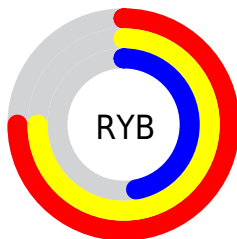
Distribution



Red (75%)

Green (61%)

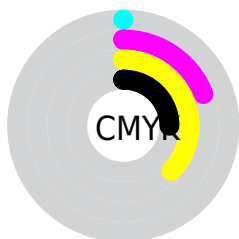
Blue (47%)



Red (75%)

Yellow (75%)

Blue (47%)

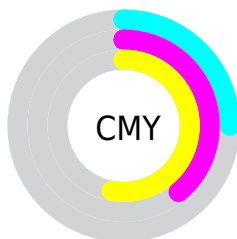


Cyan (0%)

Magenta (19%)

Yellow (37%)

Black (25%)



Cyan (25%)

Magenta (39%)

Yellow (53%)

Brightness & Saturation Gradients

These gradients show how the YUV color 162.7740, -20.5946, 25.6312 changes by changing the brightness by 10 percent. The first figure shows a shift by +10% for each color and the second figure -10%.

Similar to the brightness gradients but the following saturation gradients show a change of the YUV color 162.7740, -20.5946, 25.6312 by changing the saturation by 10% instead.

■ 162.7740,
-20.5946, 25.6312

■ 162.7740,
-20.5946, 25.6312

255.0000, 0.0000,
0.0000

■ 136.2900,
-19.8630, 24.3017

■ 217.8560,
-21.6210, 28.1903

■ 110.8060,
-19.1314, 22.9721

■ 239.4520,
-18.9568, 13.6356

■ 86.3220, -18.3997,
21.6426

■ 252.0360,
-11.3567, 2.5994

■ 62.5390, -17.5207,
19.6983

■ 39.7130, -18.0995,
18.6687

■ 20.4550, -10.0843,
14.5100

■ 0.0000, 0.0000,

0.0000

■ 162.7740,
-20.5946, 25.6312

■ 162.7740,
-20.5946, 25.6312

■ 154.7380,
-25.9998, 32.6788

■ 170.8100,
-15.1893, 18.5836

■ 147.2890,
-31.6945, 39.2115

■ 178.2590, -9.4947,
12.0509

■ 139.1390,
-37.5365, 46.3591

■ 186.4090, -3.6526,
4.9033

■ 131.1030,
-42.9418, 53.4067

■ 194.4450, 1.7526,
-2.1443

■ 123.0670,
-48.3470, 60.4542

■ 202.4810, 7.1579,
-9.1918

■ 115.6180,
-54.0417, 66.9870

■ 209.9300, 12.8525,
-15.7246

■ 113.1730,
-55.7943, 69.1313

■ 217.9660, 18.2578,
-22.7722

■ 223.8360, 15.3639,
-27.9202

■ 229.7060, 12.4699,
-33.0682

Harmonies

Analogous

The Analogous color harmony consists of three colors that are next to each other on the color wheel.



164.1480, -14.3700, 35.8272



162.7740, -20.5946, 25.6312



160.2620, -20.8352, 9.4172

Triad

The Triadic color harmony groups three colors that are evenly spaced from another and form a triangle on the color wheel.



162.7740, -20.5946, 25.6312



152.3040, 8.7241, -44.9936



165.4800, 15.5394, 9.2260

Complementary

The Complementary color scheme is a pair of colors which are on the opposite of each other on the color wheel.



162.7740, -20.5946, 25.6312



150.2260, 20.5946, -25.6312

Split Complementary

Split-complementary colors differ from the complementary color scheme. The scheme consists of three colors, the original color and two neighbors of the complement color.



162.2320, 21.5776, -14.2355



162.7740, -20.5946, 25.6312



152.2140, 18.6285, -48.4227

Square

The Square scheme is like the rectangle color scheme, but the four colors are evenly spaced on the color wheel.



162.7740, -20.5946, 25.6312



155.0750, -3.9810, -29.8838



156.8440, 23.2479, -36.6972



166.0710, 5.8810, 27.1247

Rectangle

The Rectangle color scheme consists of four colors that form a rectangle on the color wheel.



162.7740, -20.5946, 25.6312



158.9830, -17.7396, -3.4931



156.8440, 23.2479, -36.6972



164.7070, 17.8924, 1.1340

Sweetspot

The Sweet Spot groups the original color and five complimentary colors.



162.7740, -20.5946, 25.6312



238.5900, -8.1789, 10.0066



146.4470, 5.6956, 39.9500



118.4800, -4.6736, 5.7180



252.0000, 0.0000, 0.0000



125.0000, 0.0000, 0.0000

Same Dimension

The Same Dimension uses a secret algorithm to generate beautiful new colors.



162.7740, -20.5946, 25.6312



204.5880, -31.8419, 39.8263



183.3190, -30.7233, 7.6132



92.9250, -2.9210, 3.5738



94.5120, -46.5944, 58.3100



19.2590, -9.4947, 12.0509

Inverse Universe

The Inverse Universe completely reimagines the original color for something new.



150.2260, 20.5946, -25.6312



185.4120, 31.8419, -39.8263



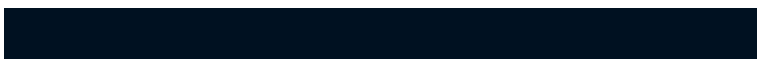
129.6810, 30.7233, -7.6132



91.0750, 2.9210, -3.5738



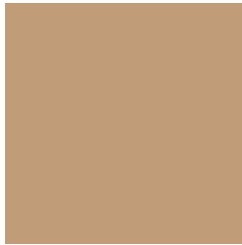
65.9010, 46.8838, -57.7952



13.7410, 9.4947, -12.0509

Previews

White Background



This preview shows how the YUV color 162.7740, -20.5946, 25.6312 looks on a white background.

Color Contrast Check

Large Text (above 18pt) WCAG AA × Fail

Any Text WCAG AA × Fail

Large Text (above 18pt) WCAG AAA × Fail

Any Text WCAG AAA × Fail

Black Background



This preview shows how the YUV color 162.7740, -20.5946, 25.6312 looks on a black background.

Color Contrast Check

Large Text (above 18pt) WCAG AA ✓ Pass

Any Text WCAG AA ✓ Pass

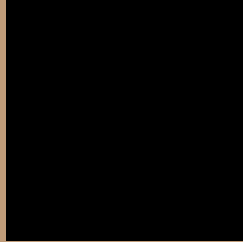
Large Text (above 18pt) WCAG AAA ✓ Pass

Any Text WCAG AAA ✓ Pass

If you want to check with other color combinations, try the [Color Contrast Checker](#).

YUV 162.7740, -20.5946, 25.6312

Background



This preview shows how black text looks on a background with the YUV color 162.7740, -20.5946, 25.6312.



This preview shows how white text looks on a background with the YUV color 162.7740, -20.5946, 25.6312.

Color Blindness Simulation

Color vision deficiency is a very complex topic, and I could not describe the different causes any better than Wikipedia does, so if you want to learn more, you should check out their [article about color blindness](#).

Dichromacy



Original Color

162.7740, -20.5946, 25.6312

Protanopia

161.2560, -18.3672, 11.1765

Deuteranopia

162.7740, -20.5946, 25.6312



Tritanopia

165.1220, -1.5391, 27.0800

Trichromacy



Original Color

162.7740, -20.5946, 25.6312

Protanomaly

162.0610, -19.2571, 16.6095

Deuteranomaly

162.7740, -20.5946, 25.6312

Tritanomaly

164.2870, -8.5225, 26.9353

Monochromacy



Original Color

162.7740, -20.5946, 25.6312

Achromatopsia

163.0000, 0.0000, 0.0000

Achromatomaly

162.8180, -7.3053, 9.8066

CSS Examples

Text

The CSS property to change the color of the text to YUV 162.7740, -20.5946, 25.6312 is called "color". The color property can be set on classes, ids or directly on the HTML element.

This example shows how text in the color `rgb(192, 156, 121)` looks like.

```
.text, #text, p{  
    color:rgb(192, 156, 121)  
}
```

If you want to add a text shadow in that color use the text-shadow property, you can generate a text shadow directly with our [CSS Text Shadow Generator](#).

Here you see how black text with a 4 pixel rgb(192, 156, 121) colored shadow looks like.

```
.shadow{ text-shadow: 4px 4px 2px rgb(192, 156, 121) }
```

Border

The CSS property to change the border of an element to YUV 162.7740, -20.5946, 25.6312 is called "border".

The border property can be set on classes, ids or directly on the HTML element.

This example shows the color as border, it can be applied via the CSS property "border" or "border-color".

```
.border, #border, table{ border:4px solid rgb(192, 156, 121) }
```


If only the border color should be changed use the property `border-color`.

```
.border{ border-color:rgb(192, 156, 121) }
```

If you want to add a box shadow in that color use:

Here you see how a box with a 4 pixel `rgb(192, 156, 121)` colored shadow looks like.

```
.boxshadow{ -moz-box-shadow:4px 4px 4px  
4px rgb(192, 156, 121); -webkit-box-  
shadow:4px 4px 4px 4px rgb(192, 156, 121);  
box-shadow:4px 4px 4px 4px rgb(192, 156,  
121) }
```

Background

The CSS property to change the background color of an element to YUV 162.7740, -20.5946, 25.6312 is called "background". The background property can be set on classes, ids or directly on the HTML element.

```
.background, #background, body{  
background: rgb(192, 156, 121) }
```

If only the background color should be changed can be used:

```
.background{ background-color: rgb(192,  
156, 121) }
```

This example shows the color as background, it is applied via the CSS property "background".

To optimize and compress your CSS code, you can use our [online CSS compressor and optimizer](#) based on csstidy. If you want to create a linear or radial gradient as background or border, check our [CSS Gradient Generator](#).

Hey! You found this booklet interesting? Support Converting Colors with the new Membership Option!

The pro membership hides all ads, plus gives you double the colors in the color bucket, and more awesome pro features!

[Learn more, Memberships starting at \\$2.50/m!](#)

**Follow me
on Twitter!**

@ConvertingColor