

Converting Colors

YUV(162.8120, -7.7953,
73.8329)

Have a look what the booklet for
YUV(162.8120, -7.7953, 73.8329)
contains.

YUV(162.8120, -7.7953, 73.8329)	3
<i>Conversions</i>	4
<i>Details</i>	6
<i>Harmonies</i>	12
<i>Previews</i>	24
<i>Color Blindness Simulation</i>	28
<i>CSS Examples</i>	31

Color

**YUV(162.8120, -7.7953,
73.8329)**

Conversions

Conversions Part 1

Format	Color
Hex	F77B93
RGB	247, 123, 147
RGB Percent	97%, 48%, 58%
CMY	0.0314, 0.5176, 0.4235
CMYK	0.00, 0.50, 0.40, 0.03
HSL	348°, 89%, 73%
HSV	348°, 50%, 97%
XYZ	50.7072, 36.0467, 31.8889
YIQ	162.8120, 66.2000, 33.7520

Conversions

Conversions Part 2

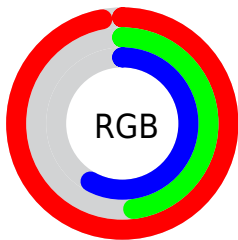
Format	Color
RYB	247, 123, 147
Decimal	16219027
CIELab	66.56, 49.68, 9.52
CIElCh	67, 50.582, 10.847
Yxy	36.0467, 0.4274, 0.3038
Android (android.graphics.Color)	4294409107 (0xFFFF77B93)
YUV	162.8120, -7.7953, 73.8329
Hunter-Lab	60.0389, 45.6882, 10.5361

Details

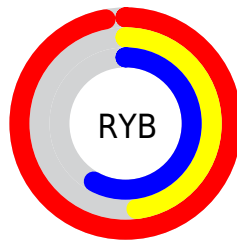
The YUV color **162.8120, -7.7953, 73.8329** is a light color, and the websafe version is hex **FF6699**. A complement of this color would be **207.1880, 7.7953, -73.8329**, and the grayscale version is **163.0000, 0.0000, 0.0000**.

A 20% lighter version of the original color is **203.6450, -1.3040, 45.0383**, and **107.4740, -5.1637, 69.7443** is the 20% darker color. If you saturate the color by 10%, you get **145.8570, -9.2965, 88.7024**, and if you desaturate by 10%, it is **179.7670, -6.2941, 58.9633**.

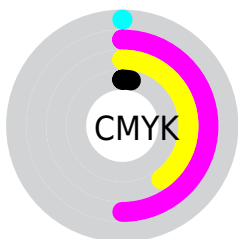
Distribution



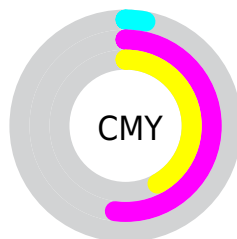
- Red (97%)
- Green (48%)
- Blue (58%)



- Red (97%)
- Yellow (48%)
- Blue (58%)



- Cyan (0%)
- Magenta (50%)
- Yellow (40%)
- Black (3%)



- Cyan (3%)
- Magenta (52%)
- Yellow (42%)

Brightness & Saturation Gradients

These gradients show how the YUV color 162.8120, -7.7953, 73.8329 changes by changing the brightness by 10 percent. The first figure shows a shift by +10% for each color and the second figure -10%.

Similar to the brightness gradients but the following saturation gradients show a change of the YUV color 162.8120, -7.7953, 73.8329 by changing the saturation by 10% instead.

162.8120, -7.7953,
73.8329

162.8120, -7.7953,
73.8329

255.0000, 0.0000,
0.0000

135.0290, -6.9163,
71.8886

203.6450, -1.3040,
45.0383

107.4740, -5.1637,
69.7443

223.8600, 2.5340,
27.3098

79.6310, -3.2691,
68.7296

243.8470, 5.4984,
9.7812

46.1460, 2.3930,
72.6630

33.3200, -1.6368,
58.4784

22.2830, -9.0135,
44.4788

13.9820, -5.9071,

28.0798

■ 0.0000, 0.0000,
0.0000

■ 162.8120, -7.7953,
73.8329

■ 162.8120, -7.7953,
73.8329

■ 145.8570, -9.2965,
88.7024

■ 179.7670, -6.2941,
58.9633

■ 129.4890,
-11.0871, 103.0571

■ 196.1350, -4.5036,
44.6086

■ 112.5340,
-12.5883, 117.9267

■ 213.0900, -3.0024,
29.7391

■ 95.5790, -14.0894,
132.7962

■ 230.0450, -1.5012,
14.8695

■ 79.3250, -15.4432,
147.0510

■ 247.0000, 0.0000,
0.0000

252.6080, 1.1793,
-4.9182

Harmonies

Analogous

The Analogous color harmony consists of three colors that are next to each other on the color wheel.



165.9080, 13.3564, 56.2087



162.8120, -7.7953, 73.8329



160.9150, -27.5661, 68.4805

Triad

The Triadic color harmony groups three colors that are evenly spaced from another and form a triangle on the color wheel.



162.8120, -7.7953, 73.8329



150.3490, -29.7521, -23.9851



130.8830, 57.2457, -114.7844

Complementary

The Complementary color scheme is a pair of colors which are on the opposite of each other on the color wheel.



162.8120, -7.7953, 73.8329



207.1880, 7.7953, -73.8329

Split Complementary

Split-complementary colors differ from the complementary color scheme. The scheme consists of three colors, the original color and two neighbors of the complement color.



132.5010, 43.1370, -116.2034



162.8120, -7.7953, 73.8329



137.1910, -3.5452, -76.4665

Square

The Square scheme is like the rectangle color scheme, but the four colors are evenly spaced on the color wheel.



162.8120, -7.7953, 73.8329



156.3340, -43.5487, 14.6161



128.7730, 23.7759, -112.9339



157.2070, 46.2399, -37.8925

Rectangle

The Rectangle color scheme consists of four colors that form a rectangle on the color wheel.



162.8120, -7.7953, 73.8329



160.0800, -38.0004, 55.1808



128.7730, 23.7759, -112.9339



131.8460, 53.3199, -115.6289

Sweetspot

The Sweet Spot groups the original color and five complimentary colors.



162.8120, -7.7953, 73.8329



229.1600, -2.5439, 22.6617



166.7370, 39.5697, 48.4657



112.3330, -1.6432, 13.7400



0.0000, 0.0000, 0.0000



128.0000, 0.0000, 0.0000

Same Dimension

The Same Dimension uses a secret algorithm to generate beautiful new colors.



162.8120, -7.7953, 73.8329



151.1670, -9.4493, 91.0615



181.7950, -28.9859, 57.1848



113.9300, -0.4585, 7.0774



59.7180, -11.6930, 110.7493



18.8950, -3.8922, 35.1721

Inverse Universe

The Inverse Universe completely reimagines the original color for something new.



162.8120, -7.7953, 73.8329



151.1670, -9.4493, 91.0615



188.2050, 28.9859, -57.1848



113.9300, -0.4585, 7.0774



59.7180, -11.6930, 110.7493



18.8950, -3.8922, 35.1721

Previews

White Background



This preview shows how the YUV color 162.8120, -7.7953, 73.8329 looks on a white background.

Color Contrast Check

Large Text (above 18pt) WCAG AA × Fail

Any Text WCAG AA × Fail

Large Text (above 18pt) WCAG AAA × Fail

Any Text WCAG AAA × Fail

Black Background



This preview shows how the YUV color 162.8120, -7.7953, 73.8329 looks on a black background.

Color Contrast Check

Large Text (above 18pt) WCAG AA ✓ Pass

Any Text WCAG AA ✓ Pass

Large Text (above 18pt) WCAG AAA ✓ Pass

Any Text WCAG AAA ✓ Pass

If you want to check with other color combinations, try the [Color Contrast Checker](#).

YUV 162.8120, -7.7953, 73.8329

Background



This preview shows how black text looks on a background with the YUV color 162.8120, -7.7953, 73.8329.



This preview shows how white text looks on a background with the YUV color 162.8120, -7.7953,

Color Blindness Simulation

Color vision deficiency is a very complex topic, and I could not describe the different causes any better than Wikipedia does, so if you want to learn more, you should check out their [article about color blindness](#).

Dichromacy



Original Color

162.8120, -7.7953, 73.8329

Protanopia

162.3960, 2.7628, 0.5297

Deuteranopia

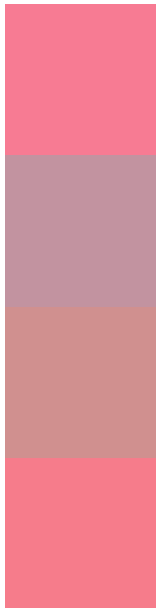
162.9610, -10.8268, 19.3282



Tritanopia

162.2050, -13.9051, 73.4882

Trichromacy



Original Color

162.8120, -7.7953, 73.8329

Protanomaly

162.5350, -1.2498, 27.5948

Deuteranomaly

163.0220, -9.8708, 39.4457

Tritanomaly

162.1880, -11.4317, 73.5031

Monochromacy



Original Color

162.8120, -7.7953, 73.8329

Achromatopsia

163.0000, 0.0000, 0.0000

Achromatomaly

162.7800, -2.8495, 27.3799

CSS Examples

Text

The CSS property to change the color of the text to YUV 162.8120, -7.7953, 73.8329 is called "color". The color property can be set on classes, ids or directly on the HTML element.

This example shows how text in the color `rgb(247, 123, 147)` looks like.

```
.text, #text, p{  
    color:rgb(247, 123, 147)  
}
```

If you want to add a text shadow in that color use the text-shadow property, you can generate a text shadow directly with our [CSS Text Shadow Generator](#).

Here you see how black text with a 4 pixel rgb(247, 123, 147) colored shadow looks like.

```
.shadow{ text-shadow: 4px 4px 2px rgb(247, 123, 147) }
```

Border

The CSS property to change the border of an element to YUV 162.8120, -7.7953, 73.8329 is called "border". The border property can be set on classes, ids or directly on the HTML element.

This example shows the color as border, it can be applied via the CSS property "border" or "border-color".

```
.border, #border, table{ border:4px solid rgb(247, 123, 147) }
```


If only the border color should be changed use the property `border-color`.

```
.border{ border-color:rgb(247, 123, 147) }
```

If you want to add a box shadow in that color use:

Here you see how a box with a 4 pixel `rgb(247, 123, 147)` colored shadow looks like.

```
.boxshadow{ -moz-box-shadow:4px 4px 4px  
4px rgb(247, 123, 147); -webkit-box-  
shadow:4px 4px 4px 4px rgb(247, 123, 147);  
box-shadow:4px 4px 4px 4px rgb(247, 123,  
147) }
```

Background

The CSS property to change the background color of an element to YUV 162.8120, -7.7953, 73.8329 is called "background". The background property can be set on classes, ids or directly on the HTML element.

```
.background, #background, body{  
background: rgb(247, 123, 147) }
```

If only the background color should be changed can be used:

```
.background{ background-color: rgb(247,  
123, 147) }
```

This example shows the color as background, it is applied via the CSS property "background".

To optimize and compress your CSS code, you can use our [online CSS compressor and optimizer](#) based on csstidy. If you want to create a linear or radial gradient as background or border, check our [CSS Gradient Generator](#).

Hey! You found this booklet interesting? Support Converting Colors with the new Membership Option!

The pro membership hides all ads, plus gives you double the colors in the color bucket, and more awesome pro features!

[Learn more, Memberships starting at \\$2.50/m!](#)

**Follow me
on Twitter!**

@ConvertingColor