

Converting Colors

YUV(162.8470, -11.2636,
19.4282)

Have a look what the booklet for
YUV(162.8470, -11.2636, 19.4282)
contains.

YUV(162.8470, -11.2636, 19.4282)	3
<i>Conversions</i>	4
<i>Details</i>	6
<i>Harmonies</i>	12
<i>Previews</i>	24
<i>Color Blindness Simulation</i>	28
<i>CSS Examples</i>	31

Color

**YUV(162.8470, -11.2636,
19.4282)**

Conversions

Conversions Part 1

Format	Color
Hex	B99C8C
RGB	185, 156, 140
RGB Percent	73%, 61%, 55%
CMY	0.2745, 0.3882, 0.4510
CMYK	0.00, 0.16, 0.24, 0.27
HSL	21°, 24%, 64%
HSV	21°, 24%, 73%
XYZ	36.6297, 35.9847, 29.8261
YIQ	162.8470, 22.4200, 1.1720

Conversions

Conversions Part 2

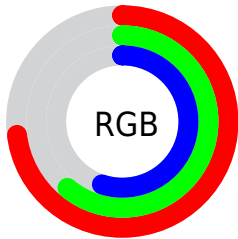
Format	Color
R_{YB}	185, 165, 140
Decimal	12164236
CIE Lab	66.51, 8.22, 12.37
CIE LCh	67, 14.849, 56.381
Yxy	35.9847, 0.3576, 0.3513
Android (android.graphics.Color)	4290354316 (0xFFB99C8C)
YUV	162.8470, -11.2636, 19.4282
Hunter-Lab	59.9872, 4.0188, 12.5116

Details

The YUV color $162.8470, -11.2636, 19.4282$ is a light color, and the websafe version is hex $CC9999$. A complement of this color would be $162.1530, 11.2636, -19.4282$, and the grayscale version is $163.0000, 0.0000, 0.0000$.

A 20% lighter version of the original color is $217.7440, -11.7058, 21.2725$, and $111.0640, -10.3846, 17.4839$ is the 20% darker color. If you saturate the color by 10%, you get $153.7510, -15.6532, 27.4054$, and if you desaturate by 10%, it is $172.0570, -6.4371, 11.3510$.

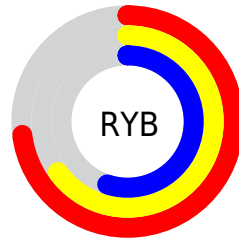
Distribution



Red (73%)

Green (61%)

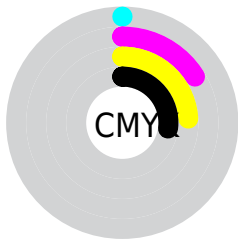
Blue (55%)



Red (73%)

Yellow (65%)

Blue (55%)

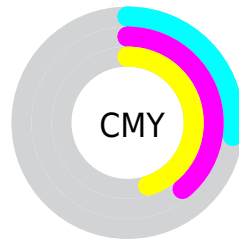


Cyan (0%)

Magenta (16%)

Yellow (24%)

Black (27%)



Cyan (27%)

Magenta (39%)

Yellow (45%)

Brightness & Saturation Gradients

These gradients show how the YUV color 162.8470, -11.2636, 19.4282 changes by changing the brightness by 10 percent. The first figure shows a shift by +10% for each color and the second figure -10%.

Similar to the brightness gradients but the following saturation gradients show a change of the YUV color 162.8470, -11.2636, 19.4282 by changing the saturation by 10% instead.

■ 162.8470,
-11.2636, 19.4282

■ 162.8470,
-11.2636, 19.4282

■ 255.0000, 0.0000,
0.0000

■ 136.5480,
-11.1162, 18.8134

■ 217.7440,
-11.7058, 21.2725

■ 111.0640,
-10.3846, 17.4839

■ 241.7320,
-10.2209, 11.6360

■ 86.7650, -10.2371,
16.8691

■ 254.4300, -2.1840,
0.4999

■ 63.2810, -9.5055,
15.5396

■ 40.9110, -8.3371,
14.1101

■ 19.5690, -9.6475,
14.4100

■ 0.0000, 0.0000,

0.0000

■ 162.8470,
-11.2636, 19.4282

■ 162.8470,
-11.2636, 19.4282

■ 153.7510,
-15.6532, 27.4054

■ 172.0570, -6.4371,
11.3510

■ 144.5410,
-20.4797, 35.4825

■ 181.1530, -2.0474,
3.3738

■ 135.4450,
-24.8694, 43.4597

■ 190.3630, 2.7790,
-4.7034

■ 126.2350,
-29.6959, 51.5369

■ 199.4590, 7.1687,
-12.6805

■ 117.1390,
-34.0855, 59.5141

■ 208.6690, 11.9952,
-20.7577

■ 107.9290,
-38.9120, 67.5913

■ 217.7650, 16.3849,
-28.7349

■ 99.3060, -44.0279,
75.1536

■ 224.6780, 14.9487,
-34.7976

■ 94.0570, -46.3701,
79.7570

■ 231.7220, 11.4761,
-40.9752

■ 234.0700, 10.3185,
-43.0344

Harmonies

Analogous

The Analogous color harmony consists of three colors that are next to each other on the color wheel.



163.7210, -6.7645, 23.0467



162.8470, -11.2636, 19.4282



161.3360, -12.9836, 11.1063

Triad

The Triadic color harmony groups three colors that are evenly spaced from another and form a triangle on the color wheel.



162.8470, -11.2636, 19.4282



156.9110, 1.5229, -21.8469



162.9750, 11.3513, -0.8551

Complementary

The Complementary color scheme is a pair of colors which are on the opposite of each other on the color wheel.



162.8470, -11.2636, 19.4282



162.1530, 11.2636, -19.4282

Split Complementary

Split-complementary colors differ from the complementary color scheme. The scheme consists of three colors, the original color and two neighbors of the complement color.



160.4680, 13.5733, -13.5654



162.8470, -11.2636, 19.4282



156.8980, 7.9383, -26.2205

Square

The Square scheme is like the rectangle color scheme, but the four colors are evenly spaced on the color wheel.



162.8470, -11.2636, 19.4282



158.4300, -5.6350, -12.6551



158.3590, 12.1480, -23.1168



164.3850, 6.2192, 11.9404

Rectangle

The Rectangle color scheme consists of four colors that form a rectangle on the color wheel.



162.8470, -11.2636, 19.4282



160.5200, -12.0884, 3.9290



158.3590, 12.1480, -23.1168



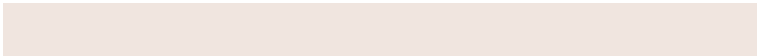
161.8820, 12.3832, -5.1585

Sweetspot

The Sweet Spot groups the original color and five complimentary colors.



162.8470, -11.2636, 19.4282



231.6050, -4.2423, 7.3624



156.7610, 6.0338, 24.7656



115.3380, -2.6316, 4.0886



247.0000, 0.0000, 0.0000



120.0000, 0.0000, 0.0000

Same Dimension

The Same Dimension uses a secret algorithm to generate beautiful new colors.



162.8470, -11.2636, 19.4282



205.6050, -17.5533, 30.1644



175.7610, -17.6302, 8.1026



87.4520, -2.1948, 3.9886



78.9290, -38.9120, 67.5913



14.2420, -7.0213, 12.0658

Inverse Universe

The Inverse Universe completely reimagines the original color for something new.



162.1530, 11.2636, -19.4282



204.3950, 17.5533, -30.1644



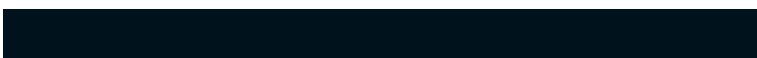
149.2390, 17.6302, -8.1026



87.5480, 2.1948, -3.9886



76.4840, 39.2014, -67.0765



13.7580, 7.0213, -12.0658

Previews

White Background



This preview shows how the YUV color 162.8470, -11.2636, 19.4282 looks on a white background.

Color Contrast Check

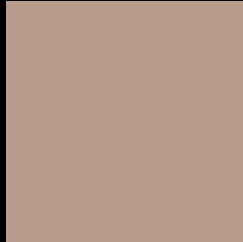
Large Text (above 18pt) WCAG AA × Fail

Any Text WCAG AA × Fail

Large Text (above 18pt) WCAG AAA × Fail

Any Text WCAG AAA × Fail

Black Background



This preview shows how the YUV color 162.8470, -11.2636, 19.4282 looks on a black background.

Color Contrast Check

Large Text (above 18pt) WCAG AA ✓ Pass

Any Text WCAG AA ✓ Pass

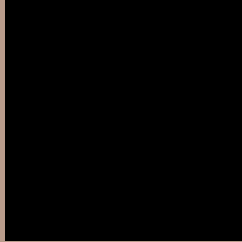
Large Text (above 18pt) WCAG AAA ✓ Pass

Any Text WCAG AAA ✓ Pass

If you want to check with other color combinations, try the [Color Contrast Checker](#).

YUV 162.8470, -11.2636, 19.4282

Background



This preview shows how black text looks on a background with the YUV color 162.8470, -11.2636, 19.4282.



This preview shows how white text looks on a background with the YUV color 162.8470, -11.2636, 19.4282.

19.4282.

Color Blindness Simulation

Color vision deficiency is a very complex topic, and I could not describe the different causes any better than Wikipedia does, so if you want to learn more, you should check out their [article about color blindness](#).

Dichromacy



Original Color

162.8470, -11.2636, 19.4282

Protanopia

161.3400, -9.0416, 6.7178

Deuteranopia

162.8470, -11.2636, 19.4282



Tritanopia

164.1320, -0.0651, 20.9322

Trichromacy



Original Color

162.8470, -11.2636, 19.4282

Protanomaly

161.8460, -9.7841, 11.5361

Deuteranomaly

162.8470, -11.2636, 19.4282

Tritanomaly

163.3940, -4.1382, 20.7025

Monochromacy



Original Color

162.8470, -11.2636, 19.4282

Achromatopsia

163.0000, 0.0000, 0.0000

Achromatomaly

162.7190, -3.8055, 7.2624

CSS Examples

Text

The CSS property to change the color of the text to YUV 162.8470, -11.2636, 19.4282 is called "color". The color property can be set on classes, ids or directly on the HTML element.

This example shows how text in the color `rgb(185, 156, 140)` looks like.

```
.text, #text, p{  
    color:rgb(185, 156, 140)  
}
```

If you want to add a text shadow in that color use the text-shadow property, you can generate a text shadow directly with our [CSS Text Shadow Generator](#).

Here you see how black text with a 4 pixel rgb(185, 156, 140) colored shadow looks like.

```
.shadow{ text-shadow: 4px 4px 2px rgb(185, 156, 140) }
```

Border

The CSS property to change the border of an element to YUV 162.8470, -11.2636, 19.4282 is called "border".

The border property can be set on classes, ids or directly on the HTML element.

This example shows the color as border, it can be applied via the CSS property "border" or "border-color".

```
.border, #border, table{ border:4px solid rgb(185, 156, 140) }
```


If only the border color should be changed use the property `border-color`.

```
.border{ border-color:rgb(185, 156, 140) }
```

If you want to add a box shadow in that color use:

Here you see how a box with a 4 pixel `rgb(185, 156, 140)` colored shadow looks like.

```
.boxshadow{ -moz-box-shadow:4px 4px 4px  
4px rgb(185, 156, 140); -webkit-box-  
shadow:4px 4px 4px 4px rgb(185, 156, 140);  
box-shadow:4px 4px 4px 4px rgb(185, 156,  
140) }
```

Background

The CSS property to change the background color of an element to YUV 162.8470, -11.2636, 19.4282 is called "background". The background property can be set on classes, ids or directly on the HTML element.

```
.background, #background, body{  
background: rgb(185, 156, 140) }
```

If only the background color should be changed can be used:

```
.background{ background-color: rgb(185,  
156, 140) }
```

This example shows the color as background, it is applied via the CSS property "background".

To optimize and compress your CSS code, you can use our [online CSS compressor and optimizer](#) based on csstidy. If you want to create a linear or radial gradient as background or border, check our [CSS Gradient Generator](#).

Hey! You found this booklet interesting? Support Converting Colors with the new Membership Option!

The pro membership hides all ads, plus gives you double the colors in the color bucket, and more awesome pro features!

[Learn more, Memberships starting at \\$2.50/m!](#)

**Follow me
on Twitter!**

@ConvertingColor