

Converting Colors

YUV(162.8500, -8.8000,
69.4146)

Have a look what the booklet for
YUV(162.8500, -8.8000, 69.4146)
contains.

YUV(162.8500, -8.8000, 69.4146)	3
<i>Conversions</i>	4
<i>Details</i>	6
<i>Harmonies</i>	12
<i>Previews</i>	24
<i>Color Blindness Simulation</i>	28
<i>CSS Examples</i>	31

Color

**YUV(162.8500, -8.8000,
69.4146)**

Conversions

Conversions Part 1

Format	Color
Hex	F27E91
RGB	242, 126, 145
RGB Percent	95%, 49%, 57%
CMY	0.0510, 0.5059, 0.4314
CMYK	0.00, 0.48, 0.40, 0.05
HSL	350°, 82%, 72%
HSV	350°, 48%, 95%
XYZ	49.1896, 35.8433, 31.1139
YIQ	162.8500, 63.0370, 30.5010

Conversions

Conversions Part 2

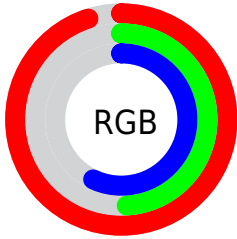
Format	Color
R _Y B	242, 126, 145
Decimal	15892113
CIE Lab	66.40, 46.26, 10.34
CIE LCh	66, 47.403, 12.594
Yxy	35.8433, 0.4235, 0.3086
Android (android.graphics.Color)	4294082193 (0xFFFF27E91)
YUV	162.8500, -8.8000, 69.4146
Hunter-Lab	59.8693, 41.8875, 11.0956

Details

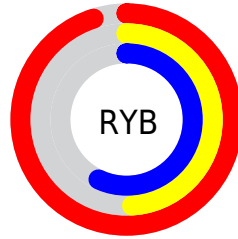
The YUV color **162.8500, -8.8000, 69.4146** is a light color, and the websafe version is hex **FF9999**. A complement of this color would be **205.1500, 8.8000, -69.4146**, and the grayscale version is **163.0000, 0.0000, 0.0000**.

A 20% lighter version of the original color is **205.1780, -3.0458, 43.6939**, and **108.0990, -6.4578, 64.8112** is the 20% darker color. If you saturate the color by 10%, you get **146.4820, -10.5906, 83.7693**, and if you desaturate by 10%, it is **179.2180, -7.0095, 55.0598**.

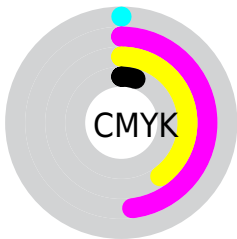
Distribution



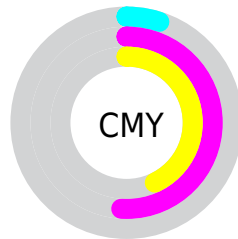
- Red (95%)
- Green (49%)
- Blue (57%)



- Red (95%)
- Yellow (49%)
- Blue (57%)



- Cyan (0%)
- Magenta (48%)
- Yellow (40%)
- Black (5%)



- Cyan (5%)
- Magenta (51%)
- Yellow (43%)

Brightness & Saturation Gradients

These gradients show how the YUV color 162.8500, -8.8000, 69.4146 changes by changing the brightness by 10 percent. The first figure shows a shift by +10% for each color and the second figure -10%.

Similar to the brightness gradients but the following saturation gradients show a change of the YUV color 162.8500, -8.8000, 69.4146 by changing the saturation by 10% instead.

162.8500, -8.8000,
69.4146

162.8500, -8.8000,
69.4146

255.0000, 0.0000,
0.0000

135.0670, -7.9210,
67.4702

205.1780, -3.0458,
43.6939

108.0990, -6.4578,
64.8112

224.8060, 1.0816,
26.4801

80.8430, -4.8526,
63.2817

245.0210, 4.9196,
8.7516

51.1790, -1.0742,
64.7410

32.1950, -2.0681,
56.8340

21.0440, -9.8817,
42.9344

12.9710, -5.9017,

26.3354

■ 0.0000, 0.0000,
0.0000

■ 162.8500, -8.8000,
69.4146

■ 162.8500, -8.8000,
69.4146

■ 146.4820,
-10.5906, 83.7693

■ 179.2180, -7.0095,
55.0598

■ 130.1140,
-12.3812, 98.1240

■ 195.5860, -5.2189,
40.7051

■ 113.0450,
-14.3192, 113.0935

■ 212.6550, -3.2809,
25.7356

■ 96.6770, -16.1098,
127.4483

■ 229.0230, -1.4903,
11.3808

■ 80.3090, -17.9003,
141.8030

■ 245.3910, 0.3002,
-2.9739

■ 76.9180, -18.2006,
144.7769

■ 251.1130, 1.9163,
-7.9921

Harmonies

Analogous

The Analogous color harmony consists of three colors that are next to each other on the color wheel.



165.0280, 11.3252, 54.3494



162.8500, -8.8000, 69.4146



161.2950, -27.2604, 63.7623

Triad

The Triadic color harmony groups three colors that are evenly spaced from another and form a triangle on the color wheel.



162.8500, -8.8000, 69.4146



150.5600, -26.4051, -24.1701



129.1390, 55.6405, -113.2549

Complementary

The Complementary color scheme is a pair of colors which are on the opposite of each other on the color wheel.



162.8500, -8.8000, 69.4146



205.1500, 8.8000, -69.4146

Split Complementary

Split-complementary colors differ from the complementary color scheme. The scheme consists of three colors, the original color and two neighbors of the complement color.



131.0990, 42.8422, -114.9738



162.8500, -8.8000, 69.4146



138.6800, -1.8142, -71.6334

Square

The Square scheme is like the rectangle color scheme, but the four colors are evenly spaced on the color wheel.



162.8500, -8.8000, 69.4146



156.2350, -40.0489, 12.0719



127.8270, 25.2283, -112.1043



158.5130, 42.1451, -31.1449

Rectangle

The Rectangle color scheme consists of four colors that form a rectangle on the color wheel.



162.8500, -8.8000, 69.4146



160.1010, -36.5318, 50.7774



127.8270, 25.2283, -112.1043



130.2160, 52.1515, -114.1994

Sweetspot

The Sweet Spot groups the original color and five complimentary colors.



162.8500, -8.8000, 69.4146



230.4480, -2.6859, 21.5321



168.2270, 36.3701, 48.0359



112.9200, -1.9326, 13.2252



0.0000, 0.0000, 0.0000



128.0000, 0.0000, 0.0000

Same Dimension

The Same Dimension uses a secret algorithm to generate beautiful new colors.



162.8500, -8.8000, 69.4146



153.9880, -11.3331, 88.5875



183.5770, -28.3855, 51.2370



111.8160, -0.8953, 7.1774



58.4360, -14.0189, 110.1196



17.7700, -4.3236, 33.5277

Inverse Universe

The Inverse Universe completely reimagines the original color for something new.



162.8500, -8.8000, 69.4146



153.9880, -11.3331, 88.5875



184.4230, 28.3855, -51.2370



111.8160, -0.8953, 7.1774



58.4360, -14.0189, 110.1196



17.7700, -4.3236, 33.5277

Previews

White Background



This preview shows how the YUV color 162.8500, -8.8000, 69.4146 looks on a white background.

Color Contrast Check

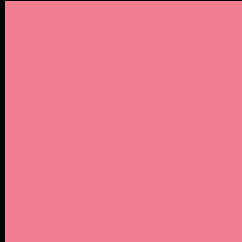
Large Text (above 18pt) WCAG AA × Fail

Any Text WCAG AA × Fail

Large Text (above 18pt) WCAG AAA × Fail

Any Text WCAG AAA × Fail

Black Background



This preview shows how the YUV color 162.8500, -8.8000, 69.4146 looks on a black background.

Color Contrast Check

Large Text (above 18pt) WCAG AA ✓ Pass

Any Text WCAG AA ✓ Pass

Large Text (above 18pt) WCAG AAA ✓ Pass

Any Text WCAG AAA ✓ Pass

If you want to check with other color combinations, try the [Color Contrast Checker](#).

YUV 162.8500, -8.8000, 69.4146

Background



This preview shows how black text looks on a background with the YUV color 162.8500, -8.8000, 69.4146.



This preview shows how white text looks on a background with the YUV color 162.8500, -8.8000,

69.4146.

Color Blindness Simulation

Color vision deficiency is a very complex topic, and I could not describe the different causes any better than Wikipedia does, so if you want to learn more, you should check out their [article about color blindness](#).

Dichromacy



Original Color

162.8500, -8.8000, 69.4146

Protanopia

162.2390, 0.8682, 1.5444

Deuteranopia

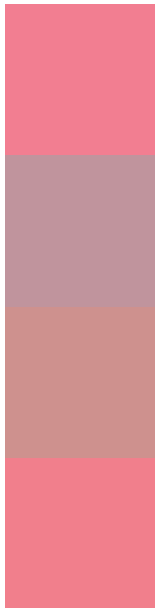
162.8470, -11.2636, 19.4282



Tritanopia

162.2260, -12.4364, 69.0848

Trichromacy



Original Color

162.8500, -8.8000, 69.4146

Protanomaly

162.1820, -2.5547, 26.1504

Deuteranomaly

162.8970, -10.3022, 37.8013

Tritanomaly

162.5680, -11.1260, 68.7849

Monochromacy



Original Color

162.8500, -8.8000, 69.4146

Achromatopsia

163.0000, 0.0000, 0.0000

Achromatomaly

163.2420, -3.5703, 25.2208

CSS Examples

Text

The CSS property to change the color of the text to YUV 162.8500, -8.8000, 69.4146 is called "color". The color property can be set on classes, ids or directly on the HTML element.

This example shows how text in the color `rgb(242, 126, 145)` looks like.

```
.text, #text, p{  
    color:rgb(242, 126, 145)  
}
```

If you want to add a text shadow in that color use the text-shadow property, you can generate a text shadow directly with our [CSS Text Shadow Generator](#).

Here you see how black text with a 4 pixel rgb(242, 126, 145) colored shadow looks like.

```
.shadow{ text-shadow: 4px 4px 2px rgb(242, 126, 145) }
```

Border

The CSS property to change the border of an element to YUV 162.8500, -8.8000, 69.4146 is called "border". The border property can be set on classes, ids or directly on the HTML element.

This example shows the color as border, it can be applied via the CSS property "border" or "border-color".

```
.border, #border, table{ border:4px solid rgb(242, 126, 145) }
```


If only the border color should be changed use the property `border-color`.

```
.border{ border-color:rgb(242, 126, 145) }
```

If you want to add a box shadow in that color use:

Here you see how a box with a 4 pixel `rgb(242, 126, 145)` colored shadow looks like.

```
.boxshadow{ -moz-box-shadow:4px 4px 4px  
4px rgb(242, 126, 145); -webkit-box-  
shadow:4px 4px 4px 4px rgb(242, 126, 145);  
box-shadow:4px 4px 4px 4px rgb(242, 126,  
145) }
```

Background

The CSS property to change the background color of an element to YUV 162.8500, -8.8000, 69.4146 is called "background". The background property can be set on classes, ids or directly on the HTML element.

```
.background, #background, body{  
background: rgb(242, 126, 145) }
```

If only the background color should be changed can be used:

```
.background{ background-color: rgb(242,  
126, 145) }
```

This example shows the color as background, it is applied via the CSS property "background".

To optimize and compress your CSS code, you can use our [online CSS compressor and optimizer](#) based on csstidy. If you want to create a linear or radial gradient as background or border, check our [CSS Gradient Generator](#).

Hey! You found this booklet interesting? Support Converting Colors with the new Membership Option!

The pro membership hides all ads, plus gives you double the colors in the color bucket, and more awesome pro features!

[Learn more, Memberships starting at \\$2.50/m!](#)

**Follow me
on Twitter!**

@ConvertingColor