

Converting Colors

YUV(163.0880, -0.0434,
13.9548)

Have a look what the booklet for
YUV(163.0880, -0.0434, 13.9548)
contains.

YUV(163.0880, -0.0434, 13.9548)	3
<i>Conversions</i>	4
<i>Details</i>	6
<i>Harmonies</i>	12
<i>Previews</i>	24
<i>Color Blindness Simulation</i>	28
<i>CSS Examples</i>	31

Color

**YUV(163.0880, -0.0434,
13.9548)**

Conversions

Conversions Part 1

Format	Color
Hex	B39BA3
RGB	179, 155, 163
RGB Percent	70%, 61%, 64%
CMY	0.2980, 0.3922, 0.3608
CMYK	0.00, 0.13, 0.09, 0.30
HSL	340°, 14%, 65%
HSV	340°, 13%, 70%
XYZ	36.9226, 35.6707, 39.5894
YIQ	163.0880, 11.7360, 7.5760

Conversions

Conversions Part 2

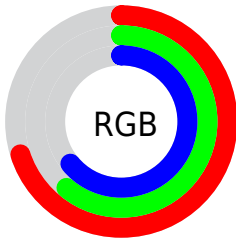
Format	Color
RYB	179, 155, 163
Decimal	11770787
CIELab	66.27, 10.23, -0.91
CIELCh	66, 10.266, 354.930
Yxy	35.6707, 0.3291, 0.3180
Android (android.graphics.Color)	4289960867 (0xFFB39BA3)
YUV	163.0880, -0.0434, 13.9548
Hunter-Lab	59.7250, 5.8318, 2.5064

Details

The YUV color $163.0880, -0.0434, 13.9548$ is a light color, and the websafe version is hex 999999 . A complement of this color would be $170.9120, 0.0434, -13.9548$, and the grayscale version is $163.0000, 0.0000, 0.0000$.

A 20% lighter version of the original color is $217.8000, 0.0986, 15.0844$, and $111.3760, -0.1854, 12.8252$ is the 20% darker color. If you saturate the color by 10%, you get $151.1540, -0.0759, 24.4209$, and if you desaturate by 10%, it is $175.0220, -0.0108, 3.4887$.

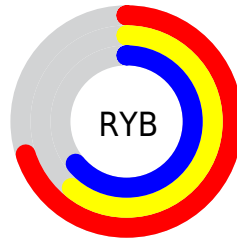
Distribution



Red (70%)

Green (61%)

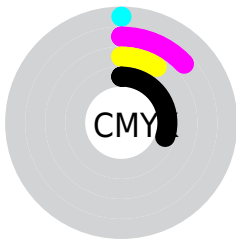
Blue (64%)



Red (70%)

Yellow (61%)

Blue (64%)

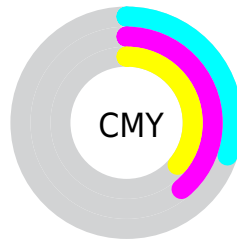


Cyan (0%)

Magenta (13%)

Yellow (9%)

Black (30%)



Cyan (30%)


Magenta (39%)


Yellow (36%)

Brightness & Saturation Gradients


These gradients show how the YUV color 163.0880, -0.0434, 13.9548 changes by changing the brightness by 10 percent. The first figure shows a shift by +10% for each color and the second figure -10%.

Similar to the brightness gradients but the following saturation gradients show a change of the YUV color 163.0880, -0.0434, 13.9548 by changing the saturation by 10% instead.

 163.0880, -0.0434,
13.9548


 163.0880, -0.0434,
13.9548

255.0000, 0.0000,
0.0000

 136.7890, 0.1040,
13.3400


 217.8000, 0.0986,
15.0844


 111.3760, -0.1854,
12.8252

 243.9950, 0.9885,
9.6514

 87.0770, -0.0380,
12.2105

 63.7780, 0.1094,
11.5957

 41.4790, 0.2569,
10.9809

 20.1800, 0.4043,
10.3661

 0.0000, 0.0000,

0.0000

■ 163.0880, -0.0434,
13.9548

■ 163.0880, -0.0434,
13.9548

■ 151.1540, -0.0759,
24.4209

■ 175.0220, -0.0108,
3.4887

■ 139.2200, -0.1085,
34.8871

■ 186.9560, 0.0217,
-6.9774

■ 127.2860, -0.1410,
45.3532

■ 198.8900, 0.0542,
-17.4435

■ 115.3520, -0.1735,
55.8193

■ 210.8240, 0.0868,
-27.9096

■ 104.0050, -0.4955,
65.7706

■ 222.7580, 0.1193,
-38.3758

■ 92.0710, -0.5280,
76.2367

■ 229.9960, 2.4670,
-44.7235

■ 80.1370, -0.5605,
86.7029

■ 231.3640, 7.7085,
-45.9232

■ 68.3170, -0.1563,
97.0690

■ 232.2760, 11.2029,
-46.7231

■ 60.3610, -0.1780,
104.0464

Harmonies

Analogous

The Analogous color harmony consists of three colors that are next to each other on the color wheel.



163.1950, 4.3409, 7.7220



163.0880, -0.0434, 13.9548



162.6600, -4.2694, 16.0842

Triad

The Triadic color harmony groups three colors that are evenly spaced from another and form a triangle on the color wheel.



163.0880, -0.0434, 13.9548



159.9370, -7.8569, 0.0553



159.0780, 8.3425, -15.8544

Complementary

The Complementary color scheme is a pair of colors which are on the opposite of each other on the color wheel.



163.0880, -0.0434, 13.9548



170.9120, 0.0434, -13.9548

Split Complementary

Split-complementary colors differ from the complementary color scheme. The scheme consists of three colors, the original color and two neighbors of the complement color.



157.8560, 5.0010, -17.4137



163.0880, -0.0434, 13.9548



158.8050, -4.3409, -7.7220

Square

The Square scheme is like the rectangle color scheme, but the four colors are evenly spaced on the color wheel.



163.0880, -0.0434, 13.9548



161.0520, -8.8996, 7.8474



158.3140, 0.3382, -15.1844



160.3500, 9.1945, -9.0769

Rectangle

The Rectangle color scheme consists of four colors that form a rectangle on the color wheel.



163.0880, -0.0434, 13.9548



162.2640, -7.0322, 15.5545



158.3140, 0.3382, -15.1844



158.8390, 7.4744, -17.3988

Sweetspot

The Sweet Spot groups the original color and five complimentary colors.



163.0880, -0.0434, 13.9548



226.0330, -0.0163, 5.2331



162.5200, 8.1246, 7.4370



113.0220, -0.0108, 3.4887



245.0000, 0.0000, 0.0000



117.0000, 0.0000, 0.0000

Same Dimension

The Same Dimension uses a secret algorithm to generate beautiful new colors.



163.0880, -0.0434, 13.9548



207.4310, -0.2125, 21.5470



164.5240, -4.6953, 12.6955



83.0330, -0.0163, 5.2331



51.5610, -0.2766, 88.9620



8.8000, 0.0986, 15.0844

Inverse Universe

The Inverse Universe completely reimagines the original color for something new.



163.0880, -0.0434, 13.9548



207.4310, -0.2125, 21.5470



169.4760, 4.6953, -12.6955



83.0330, -0.0163, 5.2331



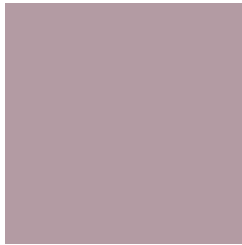
51.5610, -0.2766, 88.9620



8.8000, 0.0986, 15.0844

Previews

White Background



This preview shows how the YUV color 163.0880, -0.0434, 13.9548 looks on a white background.

Color Contrast Check

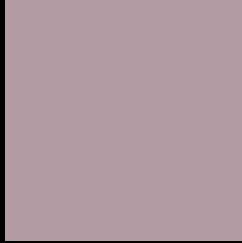
Large Text (above 18pt) WCAG AA × Fail

Any Text WCAG AA × Fail

Large Text (above 18pt) WCAG AAA × Fail

Any Text WCAG AAA × Fail

Black Background



This preview shows how the YUV color 163.0880, -0.0434, 13.9548 looks on a black background.

Color Contrast Check

Large Text (above 18pt) WCAG AA ✓ Pass

Any Text WCAG AA ✓ Pass

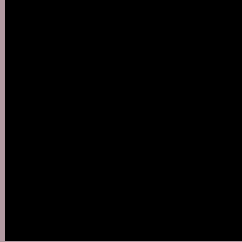
Large Text (above 18pt) WCAG AAA ✓ Pass

Any Text WCAG AAA ✓ Pass

If you want to check with other color combinations, try the [Color Contrast Checker](#).

YUV 163.0880, -0.0434, 13.9548

Background



This preview shows how black text looks on a background with the YUV color 163.0880, -0.0434, 13.9548.



This preview shows how white text looks on a background with the YUV color 163.0880, -0.0434,

Color Blindness Simulation

Color vision deficiency is a very complex topic, and I could not describe the different causes any better than Wikipedia does, so if you want to learn more, you should check out their [article about color blindness](#).

Dichromacy



Original Color

163.0880, -0.0434, 13.9548

Protanopia

161.5810, 2.1786, 1.2445

Deuteranopia

162.7780, 0.1094, 11.5957



Tritanopia

162.9570, 1.9932, 14.0697

Trichromacy



Original Color

163.0880, -0.0434, 13.9548

Protanomaly

162.0870, 1.4361, 6.0627

Deuteranomaly

163.0770, -0.0380, 12.2105

Tritanomaly

162.8430, 1.5564, 14.1697

Monochromacy



Original Color

163.0880, -0.0434, 13.9548

Achromatopsia

163.0000, 0.0000, 0.0000

Achromatomaly

163.0330, -0.0163, 5.2331

CSS Examples

Text

The CSS property to change the color of the text to YUV 163.0880, -0.0434, 13.9548 is called "color". The color property can be set on classes, ids or directly on the HTML element.

This example shows how text in the color `rgb(179, 155, 163)` looks like.

```
.text, #text, p{  
    color:rgb(179, 155, 163)  
}
```

If you want to add a text shadow in that color use the text-shadow property, you can generate a text shadow directly with our [CSS Text Shadow Generator](#).

Here you see how black text with a 4 pixel rgb(179, 155, 163) colored shadow looks like.

```
.shadow{ text-shadow: 4px 4px 2px rgb(179, 155, 163) }
```

Border

The CSS property to change the border of an element to YUV 163.0880, -0.0434, 13.9548 is called "border". The border property can be set on classes, ids or directly on the HTML element.

This example shows the color as border, it can be applied via the CSS property "border" or "border-color".

```
.border, #border, table{ border:4px solid rgb(179, 155, 163) }
```


If only the border color should be changed use the property `border-color`.

```
.border{ border-color:rgb(179, 155, 163) }
```

If you want to add a box shadow in that color use:

Here you see how a box with a 4 pixel `rgb(179, 155, 163)` colored shadow looks like.

```
.boxshadow{ -moz-box-shadow:4px 4px 4px  
4px rgb(179, 155, 163); -webkit-box-  
shadow:4px 4px 4px 4px rgb(179, 155, 163);  
box-shadow:4px 4px 4px 4px rgb(179, 155,  
163) }
```

Background

The CSS property to change the background color of an element to YUV 163.0880, -0.0434, 13.9548 is called "background". The background property can be set on classes, ids or directly on the HTML element.

```
.background, #background, body{  
background: rgb(179, 155, 163) }
```

If only the background color should be changed can be used:

```
.background{ background-color: rgb(179,  
155, 163) }
```

This example shows the color as background, it is applied via the CSS property "background".

To optimize and compress your CSS code, you can use our [online CSS compressor and optimizer](#) based on csstidy. If you want to create a linear or radial gradient as background or border, check our [CSS Gradient Generator](#).

Hey! You found this booklet interesting? Support Converting Colors with the new Membership Option!

The pro membership hides all ads, plus gives you double the colors in the color bucket, and more awesome pro features!

[Learn more, Memberships starting at \\$2.50/m!](#)

**Follow me
on Twitter!**

@ConvertingColor