

Converting Colors

YUV(163.1090, -11.8857,
32.3534)

Have a look what the booklet for
YUV(163.1090, -11.8857, 32.3534)
contains.

YUV(163.1090, -11.8857, 32.3534)	3
<i>Conversions</i>	4
<i>Details</i>	6
<i>Harmonies</i>	12
<i>Previews</i>	24
<i>Color Blindness Simulation</i>	28
<i>CSS Examples</i>	31

Color

**YUV(163.1090, -11.8857,
32.3534)**

Conversions

Conversions Part 1

Format	Color
Hex	C8958B
RGB	200, 149, 139
RGB Percent	78%, 58%, 55%
CMY	0.2157, 0.4157, 0.4549
CMYK	0.00, 0.25, 0.31, 0.22
HSL	10°, 36%, 66%
HSV	10°, 31%, 78%
XYZ	39.2271, 35.6383, 29.2375
YIQ	163.1090, 33.6060, 7.7020

Conversions

Conversions Part 2

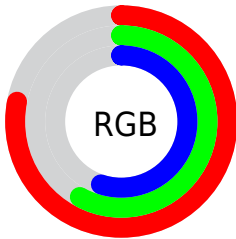
Format	Color
R _Y B	200, 151, 139
Decimal	13145483
CIE Lab	66.24, 17.77, 12.77
CIE LCh	66, 21.882, 35.696
Yxy	35.6383, 0.3768, 0.3423
Android (android.graphics.Color)	4291335563 (0xFFC8958B)
YUV	163.1090, -11.8857, 32.3534
Hunter-Lab	59.6978, 12.8199, 12.7507

Details

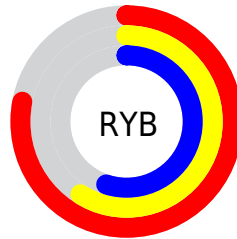
The YUV color $163.1090, -11.8857, 32.3534$ is a light color, and the websafe version is hex $CC9999$. A complement of this color would be $175.8910, 11.8857, -32.3534$, and the grayscale version is $163.0000, 0.0000, 0.0000$.

A 20% lighter version of the original color is $217.2940, -12.4699, 33.0682$, and $111.0270, -10.8593, 29.7943$ is the 20% darker color. If you saturate the color by 10%, you get $150.8500, -15.7020, 43.1046$, and if you desaturate by 10%, it is $175.3680, -8.0694, 21.6023$.

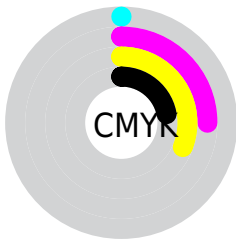
Distribution



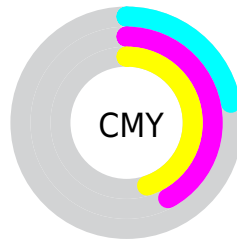
- Red (78%)
- Green (58%)
- Blue (55%)



- Red (78%)
- Yellow (59%)
- Blue (55%)



- Cyan (0%)
- Magenta (25%)
- Yellow (31%)
- Black (22%)



- Cyan (22%)
- Magenta (42%)
- Yellow (45%)

Brightness & Saturation Gradients

These gradients show how the YUV color 163.1090, -11.8857, 32.3534 changes by changing the brightness by 10 percent. The first figure shows a shift by +10% for each color and the second figure -10%.

Similar to the brightness gradients but the following saturation gradients show a change of the YUV color 163.1090, -11.8857, 32.3534 by changing the saturation by 10% instead.

■ 163.1090,
-11.8857, 32.3534

■ 163.1090,
-11.8857, 32.3534

255.0000, 0.0000,
0.0000

■ 136.6250,
-11.1541, 31.0239

■ 217.2940,
-12.4699, 33.0682

■ 111.0270,
-10.8593, 29.7943

■ 237.5090, -8.6319,
15.3396

■ 86.2440, -9.9803,
27.8500

■ 254.3160, -2.6208,
0.5999

■ 62.4610, -9.1013,
25.9057

■ 39.6780, -8.2223,
23.9614

■ 17.2650, -8.5116,
23.4466

■ 1.1960, -0.5896,

2.4591

■ 0.0000, 0.0000,
0.0000

■ 163.1090,
-11.8857, 32.3534

■ 163.1090,
-11.8857, 32.3534

■ 150.8500,
-15.7020, 43.1046

■ 175.3680, -8.0694,
21.6023

■ 139.1780,
-19.8078, 53.3409

■ 187.0400, -3.9637,
11.3659

■ 126.9190,
-23.6241, 64.0920

■ 199.2990, -0.1474,
0.6148

■ 114.6600,
-27.4404, 74.8432

■ 211.5580, 3.6689,
-10.1364

■ 102.4010,
-31.2567, 85.5943

■ 223.8170, 7.4852,
-20.8875

■ 90.7290, -35.3624,
95.8307

■ 235.0330, 9.8437,
-30.7239

■ 79.1710, -39.0313,
105.9670

■ 238.5550, 8.1074,
-33.8127

Harmonies

Analogous

The Analogous color harmony consists of three colors that are next to each other on the color wheel.



164.1010, -3.0078, 31.4834



163.1090, -11.8857, 32.3534



161.5720, -17.5370, 24.9314

Triad

The Triadic color harmony groups three colors that are evenly spaced from another and form a triangle on the color wheel.



163.1090, -11.8857, 32.3534



155.0650, -5.4550, -23.7360



160.6510, 19.3991, -15.4799

Complementary

The Complementary color scheme is a pair of colors which are on the opposite of each other on the color wheel.



163.1090, -11.8857, 32.3534



175.8910, 11.8857, -32.3534

Split Complementary

Split-complementary colors differ from the complementary color scheme. The scheme consists of three colors, the original color and two neighbors of the complement color.



155.6550, 19.8901, -33.0234



163.1090, -11.8857, 32.3534



152.5500, 5.6449, -37.3163

Square

The Square scheme is like the rectangle color scheme, but the four colors are evenly spaced on the color wheel.



163.1090, -11.8857, 32.3534



157.5850, -14.0924, -6.6520



152.6340, 14.9704, -41.7750



163.5180, 14.5346, 4.8077

Rectangle

The Rectangle color scheme consists of four colors that form a rectangle on the color wheel.



163.1090, -11.8857, 32.3534



160.7620, -19.1097, 15.9947



152.6340, 14.9704, -41.7750



159.1340, 20.1469, -22.0425

Sweetspot

The Sweet Spot groups the original color and five complimentary colors.



163.1090, -11.8857, 32.3534



241.2250, -4.5479, 12.0807



163.1670, 13.7217, 32.3025



119.2460, -3.0793, 7.6773



0.0000, 0.0000, 0.0000



128.0000, 0.0000, 0.0000

Same Dimension

The Same Dimension uses a secret algorithm to generate beautiful new colors.



163.1090, -11.8857, 32.3534



197.9110, -18.1971, 50.0671



180.7190, -20.5675, 16.9094



93.2780, -1.6161, 5.0182



64.5860, -31.8409, 86.3091



14.2860, -7.0430, 19.0432

Inverse Universe

The Inverse Universe completely reimagines the original color for something new.



175.8910, 11.8857, -32.3534



218.0890, 18.1971, -50.0671



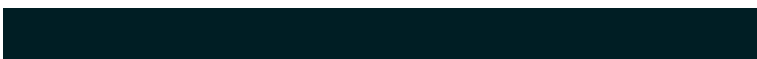
158.2810, 20.5675, -16.9094



95.7220, 1.6161, -5.0182



98.4140, 31.8409, -86.3091



21.7140, 7.0430, -19.0432

Previews

White Background



This preview shows how the YUV color 163.1090, -11.8857, 32.3534 looks on a white background.

Color Contrast Check

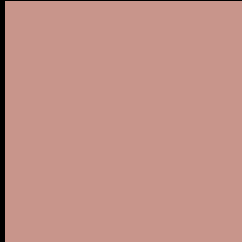
Large Text (above 18pt) WCAG AA × Fail

Any Text WCAG AA × Fail

Large Text (above 18pt) WCAG AAA × Fail

Any Text WCAG AAA × Fail

Black Background



This preview shows how the YUV color 163.1090, -11.8857, 32.3534 looks on a black background.

Color Contrast Check

Large Text (above 18pt) WCAG AA ✓ Pass

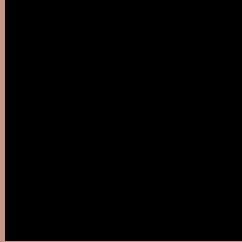
Any Text WCAG AA ✓ Pass

Large Text (above 18pt) WCAG AAA ✓ Pass

Any Text WCAG AAA ✓ Pass

If you want to check with other color combinations, try the [Color Contrast Checker](#).

YUV 163.1090, -11.8857, 32.3534 Background



This preview shows how black text looks on a background with the YUV color 163.1090, -11.8857, 32.3534.



This preview shows how white text looks on a background with the YUV color 163.1090, -11.8857,

Color Blindness Simulation

Color vision deficiency is a very complex topic, and I could not describe the different causes any better than Wikipedia does, so if you want to learn more, you should check out their [article about color blindness](#).

Dichromacy



Original Color

163.1090, -11.8857, 32.3534

Protanopia

161.2690, -8.0206, 5.9031

Deuteranopia

162.0320, -11.8478, 20.1429



Tritanopia

163.9980, -3.4500, 33.3278

Trichromacy



Original Color

163.1090, -11.8857, 32.3534

Protanomaly

162.2810, -9.5055, 15.5396

Deuteranomaly

162.3530, -12.0060, 24.2464

Tritanomaly

163.4880, -6.6496, 32.8980

Monochromacy



Original Color

163.1090, -11.8857, 32.3534

Achromatopsia

163.0000, 0.0000, 0.0000

Achromatomaly

162.9260, -4.4005, 11.4659

CSS Examples

Text

The CSS property to change the color of the text to YUV 163.1090, -11.8857, 32.3534 is called "color". The color property can be set on classes, ids or directly on the HTML element.

This example shows how text in the color `rgb(200, 149, 139)` looks like.

```
.text, #text, p{  
    color:rgb(200, 149, 139)  
}
```

If you want to add a text shadow in that color use the text-shadow property, you can generate a text shadow directly with our [CSS Text Shadow Generator](#).

Here you see how black text with a 4 pixel rgb(200, 149, 139) colored shadow looks like.

```
.shadow{ text-shadow: 4px 4px 2px rgb(200, 149, 139) }
```

Border

The CSS property to change the border of an element to YUV 163.1090, -11.8857, 32.3534 is called "border".

The border property can be set on classes, ids or directly on the HTML element.

This example shows the color as border, it can be applied via the CSS property "border" or "border-color".

```
.border, #border, table{ border:4px solid rgb(200, 149, 139) }
```


If only the border color should be changed use the property border-color.

```
.border{ border-color:rgb(200, 149, 139) }
```

If you want to add a box shadow in that color use:

Here you see how a box with a 4 pixel rgb(200, 149, 139) colored shadow looks like.

```
.boxshadow{ -moz-box-shadow:4px 4px 4px  
4px rgb(200, 149, 139); -webkit-box-  
shadow:4px 4px 4px 4px rgb(200, 149, 139);  
box-shadow:4px 4px 4px 4px rgb(200, 149,  
139) }
```

Background

The CSS property to change the background color of an element to YUV 163.1090, -11.8857, 32.3534 is called "background". The background property can be set on classes, ids or directly on the HTML element.

```
.background, #background, body{  
background: rgb(200, 149, 139) }
```

If only the background color should be changed can be used:

```
.background{ background-color: rgb(200,  
149, 139) }
```

This example shows the color as background, it is applied via the CSS property "background".

To optimize and compress your CSS code, you can use our [online CSS compressor and optimizer](#) based on csstidy. If you want to create a linear or radial gradient as background or border, check our [CSS Gradient Generator](#).

Hey! You found this booklet interesting? Support Converting Colors with the new Membership Option!

The pro membership hides all ads, plus gives you double the colors in the color bucket, and more awesome pro features!

[Learn more, Memberships starting at \\$2.50/m!](#)

**Follow me
on Twitter!**

@ConvertingColor