

Converting Colors

YUV(163.1380, -2.5330,
19.1730)

Have a look what the booklet for
YUV(163.1380, -2.5330, 19.1730)
contains.

YUV(163.1380, -2.5330, 19.1730)	3
<i>Conversions</i>	4
<i>Details</i>	6
<i>Harmonies</i>	12
<i>Previews</i>	24
<i>Color Blindness Simulation</i>	28
<i>CSS Examples</i>	31

Color

**YUV(163.1380, -2.5330,
19.1730)**

Conversions

Conversions Part 1

Format	Color
Hex	B9999E
RGB	185, 153, 158
RGB Percent	73%, 60%, 62%
CMY	0.2745, 0.4000, 0.3804
CMYK	0.00, 0.17, 0.15, 0.27
HSL	351°, 19%, 66%
HSV	351°, 17%, 73%
XYZ	37.5704, 35.5654, 37.2324
YIQ	163.1380, 17.4670, 8.3390

Conversions

Conversions Part 2

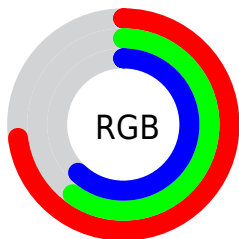
Format	Color
R_{YB}	185, 153, 158
Decimal	12163486
CIE _{Lab}	66.19, 12.70, 1.84
CIE _{LCh}	66, 12.830, 8.264
Yxy	35.5654, 0.3404, 0.3222
Android (android.graphics.Color)	4290353566 (0xFFB9999E)
YUV	163.1380, -2.5330, 19.1730
Hunter-Lab	59.6367, 8.0885, 4.7298

Details

The YUV color $163.1380, -2.5330, 19.1730$ is a light color, and the websafe version is hex $CC9999$. A complement of this color would be $174.8620, 2.5330, -19.1730$, and the grayscale version is $163.0000, 0.0000, 0.0000$.

A 20% lighter version of the original color is $217.8500, -2.3910, 20.3026$, and $111.5400, -2.2382, 17.9434$ is the 20% darker color. If you saturate the color by 10%, you get $150.7480, -4.3128, 30.0390$, and if you desaturate by 10%, it is $175.5280, -0.7533, 8.3069$.

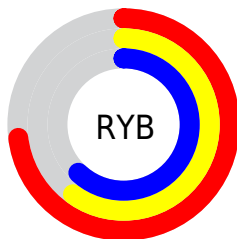
Distribution



Red (73%)

Green (60%)

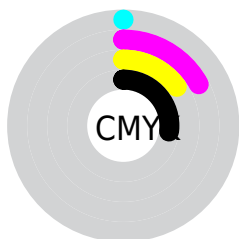
Blue (62%)



Red (73%)

Yellow (60%)

Blue (62%)

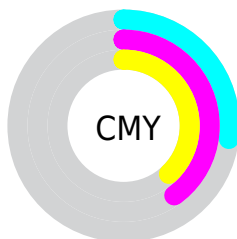


Cyan (0%)

Magenta (17%)

Yellow (15%)

Black (27%)



Cyan (27%)

Magenta (40%)

Yellow (38%)

Brightness & Saturation Gradients

These gradients show how the YUV color 163.1380, -2.5330, 19.1730 changes by changing the brightness by 10 percent. The first figure shows a shift by +10% for each color and the second figure -10%.

Similar to the brightness gradients but the following saturation gradients show a change of the YUV color 163.1380, -2.5330, 19.1730 by changing the saturation by 10% instead.

■ 163.1380, -2.5330,
19.1730

■ 163.1380, -2.5330,
19.1730

255.0000, 0.0000,
0.0000

■ 136.8390, -2.3856,
18.5582

■ 217.8500, -2.3910,
20.3026

■ 111.5400, -2.2382,
17.9434

■ 242.2510, -0.6167,
11.1809

■ 86.9420, -1.9434,
16.7139

■ 63.3440, -1.6486,
15.4843

■ 41.0450, -1.5012,
14.8695

■ 19.7460, -1.3538,
14.2548

■ 0.0000, 0.0000,

0.0000

■ 163.1380, -2.5330,
19.1730

■ 163.1380, -2.5330,
19.1730

■ 150.7480, -4.3128,
30.0390

■ 175.5280, -0.7533,
8.3069

■ 137.8850, -5.3663,
41.3199

■ 188.3910, 0.3002,
-2.9739

■ 125.4950, -7.1460,
52.1859

■ 201.3680, 1.7906,
-14.3547

■ 112.6320, -8.1996,
63.4667

■ 213.6440, 3.1335,
-25.1208

■ 100.2420, -9.9793,
74.3328

■ 226.0340, 4.9132,
-35.9868

■ 87.2650, -11.4696,
85.7136

■ 233.7280, 9.0081,
-42.7345

■ 74.9890, -12.8126,
96.4796

■ 234.0700, 10.3185,
-43.0344

■ 62.0120, -14.3029,
107.8605

■ 58.6210, -14.6032,
110.8344

Harmonies

Analogous

The Analogous color harmony consists of three colors that are next to each other on the color wheel.



163.2990, 3.3036, 13.7698



163.1380, -2.5330, 19.1730



162.4710, -7.6272, 19.7579

Triad

The Triadic color harmony groups three colors that are evenly spaced from another and form a triangle on the color wheel.



163.1380, -2.5330, 19.1730



159.2030, -7.9881, -4.5630



158.5770, 11.5475, -17.1690

Complementary

The Complementary color scheme is a pair of colors which are on the opposite of each other on the color wheel.



163.1380, -2.5330, 19.1730



174.8620, 2.5330, -19.1730

Split Complementary

Split-complementary colors differ from the complementary color scheme. The scheme consists of three colors, the original color and two neighbors of the complement color.



157.4470, 8.6536, -22.3170



163.1380, -2.5330, 19.1730



157.5160, -2.7194, -14.4845

Square

The Square scheme is like the rectangle color scheme, but the four colors are evenly spaced on the color wheel.



163.1380, -2.5330, 19.1730



160.1720, -10.9308, 5.9882



157.0790, 3.4121, -21.1173



160.8170, 10.9362, -7.7325

Rectangle

The Rectangle color scheme consists of four colors that form a rectangle on the color wheel.



163.1380, -2.5330, 19.1730



161.8790, -9.8003, 16.7691



157.0790, 3.4121, -21.1173



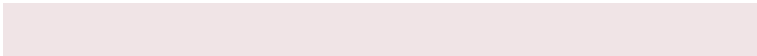
158.0390, 10.8268, -19.3282

Sweetspot

The Sweet Spot groups the original color and five complimentary colors.



163.1380, -2.5330, 19.1730



231.8160, -0.8953, 7.1774



164.7210, 9.9975, 13.3997



115.2070, -0.5951, 4.2035



247.0000, 0.0000, 0.0000



120.0000, 0.0000, 0.0000

Same Dimension

The Same Dimension uses a secret algorithm to generate beautiful new colors.



163.1380, -2.5330, 19.1730



205.1610, -4.0234, 30.5538



169.0250, -7.9003, 14.0101



85.8050, -0.8899, 5.4330



49.3800, -12.5123, 93.5057



8.8280, -2.3802, 16.8138

Inverse Universe

The Inverse Universe completely reimagines the original color for something new.



163.1380, -2.5330, 19.1730



205.1610, -4.0234, 30.5538



168.9750, 7.9003, -14.0101



85.8050, -0.8899, 5.4330



49.3800, -12.5123, 93.5057



8.8280, -2.3802, 16.8138

Previews

White Background



This preview shows how the YUV color 163.1380, -2.5330, 19.1730 looks on a white background.

Color Contrast Check

Large Text (above 18pt) WCAG AA × Fail

Any Text WCAG AA × Fail

Large Text (above 18pt) WCAG AAA × Fail

Any Text WCAG AAA × Fail

Black Background



This preview shows how the YUV color 163.1380, -2.5330, 19.1730 looks on a black background.

Color Contrast Check

Large Text (above 18pt) WCAG AA ✓ Pass

Any Text WCAG AA ✓ Pass

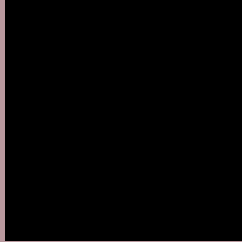
Large Text (above 18pt) WCAG AAA ✓ Pass

Any Text WCAG AAA ✓ Pass

If you want to check with other color combinations, try the [Color Contrast Checker](#).

YUV 163.1380, -2.5330, 19.1730

Background



This preview shows how black text looks on a background with the YUV color 163.1380, -2.5330, 19.1730.



This preview shows how white text looks on a background with the YUV color 163.1380, -2.5330,

Color Blindness Simulation

Color vision deficiency is a very complex topic, and I could not describe the different causes any better than Wikipedia does, so if you want to learn more, you should check out their [article about color blindness](#).

Dichromacy



Original Color

163.1380, -2.5330, 19.1730

Protanopia

161.1250, 0.4314, 1.6444

Deuteranopia

162.6920, -2.8062, 13.4251



Tritanopia

163.5340, 0.2297, 19.7027

Trichromacy



Original Color

163.1380, -2.5330, 19.1730

Protanomaly

161.6420, -0.3165, 8.2070

Deuteranomaly

163.0020, -2.9590, 15.7842

Tritanomaly

163.3060, -0.6439, 19.9026

Monochromacy



Original Color

163.1380, -2.5330, 19.1730

Achromatopsia

163.0000, 0.0000, 0.0000

Achromatomaly

162.8160, -0.8953, 7.1774

CSS Examples

Text

The CSS property to change the color of the text to YUV 163.1380, -2.5330, 19.1730 is called "color". The color property can be set on classes, ids or directly on the HTML element.

This example shows how text in the color `rgb(185, 153, 158)` looks like.

```
.text, #text, p{  
    color:rgb(185, 153, 158)  
}
```

If you want to add a text shadow in that color use the text-shadow property, you can generate a text shadow directly with our [CSS Text Shadow Generator](#).

Here you see how black text with a 4 pixel rgb(185, 153, 158) colored shadow looks like.

```
.shadow{ text-shadow: 4px 4px 2px rgb(185, 153, 158) }
```

Border

The CSS property to change the border of an element to YUV 163.1380, -2.5330, 19.1730 is called "border". The border property can be set on classes, ids or directly on the HTML element.

This example shows the color as border, it can be applied via the CSS property "border" or "border-color".

```
.border, #border, table{ border:4px solid rgb(185, 153, 158) }
```


If only the border color should be changed use the property `border-color`.

```
.border{ border-color:rgb(185, 153, 158) }
```

If you want to add a box shadow in that color use:

Here you see how a box with a 4 pixel `rgb(185, 153, 158)` colored shadow looks like.

```
.boxshadow{ -moz-box-shadow:4px 4px 4px  
4px rgb(185, 153, 158); -webkit-box-  
shadow:4px 4px 4px 4px rgb(185, 153, 158);  
box-shadow:4px 4px 4px 4px rgb(185, 153,  
158) }
```

Background

The CSS property to change the background color of an element to YUV 163.1380, -2.5330, 19.1730 is called "background". The background property can be set on classes, ids or directly on the HTML element.

```
.background, #background, body{  
background: rgb(185, 153, 158) }
```

If only the background color should be changed can be used:

```
.background{ background-color: rgb(185,  
153, 158) }
```

This example shows the color as background, it is applied via the CSS property "background".

To optimize and compress your CSS code, you can use our [online CSS compressor and optimizer](#) based on csstidy. If you want to create a linear or radial gradient as background or border, check our [CSS Gradient Generator](#).

Hey! You found this booklet interesting? Support Converting Colors with the new Membership Option!

The pro membership hides all ads, plus gives you double the colors in the color bucket, and more awesome pro features!

[Learn more, Memberships starting at \\$2.50/m!](#)

**Follow me
on Twitter!**

@ConvertingColor