

Converting Colors

YUV(163.2000, -26.7206,
30.5196)

Have a look what the booklet for
YUV(163.2000, -26.7206, 30.5196)
contains.

YUV(163.2000, -26.7206, 30.5196)	3
<i>Conversions</i>	4
<i>Details</i>	6
<i>Harmonies</i>	12
<i>Previews</i>	24
<i>Color Blindness Simulation</i>	28
<i>CSS Examples</i>	31

Color

**YUV(163.2000, -26.7206,
30.5196)**

Conversions

Conversions Part 1

Format	Color
Hex	C69C6D
RGB	198, 156, 109
RGB Percent	78%, 61%, 43%
CMY	0.2235, 0.3882, 0.5725
CMYK	0.00, 0.21, 0.45, 0.22
HSL	32°, 44%, 60%
HSV	32°, 45%, 78%
XYZ	37.9375, 36.8868, 19.5883
YIQ	163.2000, 40.1190, -5.7130

Conversions

Conversions Part 2

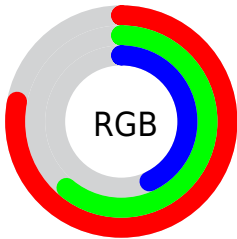
Format	Color
RYB	189, 198, 109
Decimal	13016173
CIELab	67.19, 9.55, 30.53
CIELCh	67, 31.991, 72.623
Yxy	36.8868, 0.4018, 0.3907
Android (android.graphics.Color)	4291206253 (0xFFC69C6D)
YUV	163.2000, -26.7206, 30.5196
Hunter-Lab	60.7345, 5.2136, 23.3917

Details

The YUV color $163.2000, -26.7206, 30.5196$ is a light color, and the websafe version is hex $CC9966$. A complement of this color would be $143.8000, 26.7206, -30.5196$, and the grayscale version is $163.0000, 0.0000, 0.0000$.

A 20% lighter version of the original color is $217.8690, -28.0364, 32.5639$, and $110.9330, -25.1100, 27.2458$ is the 20% darker color. If you saturate the color by 10%, you get $155.6370, -32.8520, 37.1524$, and if you desaturate by 10%, it is $170.7630, -20.5892, 23.8868$.

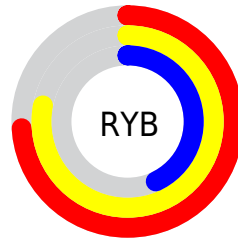
Distribution



Red (78%)

Green (61%)

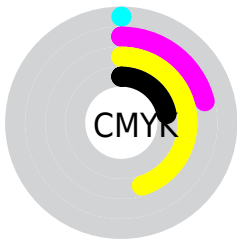
Blue (43%)



Red (74%)

Yellow (78%)

Blue (43%)

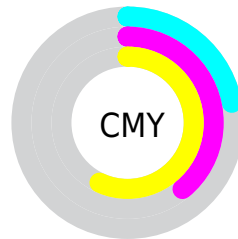


Cyan (0%)

Magenta (21%)

Yellow (45%)

Black (22%)



Cyan (22%)

Magenta (39%)

Yellow (57%)

Brightness & Saturation Gradients

These gradients show how the YUV color 163.2000, -26.7206, 30.5196 changes by changing the brightness by 10 percent. The first figure shows a shift by +10% for each color and the second figure -10%.

Similar to the brightness gradients but the following saturation gradients show a change of the YUV color 163.2000, -26.7206, 30.5196 by changing the saturation by 10% instead.

■ 163.2000,
-26.7206, 30.5196

■ 163.2000,
-26.7206, 30.5196

■ 255.0000, 0.0000,
0.0000

■ 136.7160,
-25.9890, 29.1901

■ 217.8690,
-28.0364, 32.5639

■ 110.9330,
-25.1100, 27.2458

■ 237.9700,
-24.6352, 14.9353

■ 86.2640, -23.7942,
25.2015

■ 250.5540,
-17.0351, 3.8991

■ 62.3670, -23.3519,
23.3571

■ 253.8600, -4.3680,
0.9998

■ 40.2680, -19.8521,
20.8130

■ 21.0530, -10.3791,
15.7395

■ 0.0000, 0.0000,

0.0000

■ 163.2000,
-26.7206, 30.5196

■ 163.2000,
-26.7206, 30.5196

■ 155.6370,
-32.8520, 37.1524

■ 170.7630,
-20.5892, 23.8868

■ 147.4870,
-38.6941, 44.2999

■ 178.9130,
-14.7471, 16.7393

■ 140.0380,
-44.3887, 50.8327

■ 186.3620, -9.0525,
10.2065

■ 132.4750,
-50.5202, 57.4654

■ 193.9250, -2.9210,
3.5738

■ 124.3250,
-56.3622, 64.6130

■ 202.0750, 2.9210,
-3.5738

■ 120.8370,
-59.5726, 67.6720

■ 209.6380, 9.0525,
-10.2065

■ 217.2010, 15.1839,
-16.8393

■ 223.8690, 15.3476,
-22.6871

■ 229.1520, 12.7431,
-27.3203

Harmonies

Analogous

The Analogous color harmony consists of three colors that are next to each other on the color wheel.



165.2370, -19.3438, 44.5192



163.2000, -26.7206, 30.5196



160.7690, -26.5081, 8.9726

Triad

The Triadic color harmony groups three colors that are evenly spaced from another and form a triangle on the color wheel.



163.2000, -26.7206, 30.5196



146.8500, 13.8780, -64.7664



167.4250, 19.0175, 13.6593

Complementary

The Complementary color scheme is a pair of colors which are on the opposite of each other on the color wheel.



163.2000, -26.7206, 30.5196



143.8000, 26.7206, -30.5196

Split Complementary

Split-complementary colors differ from the complementary color scheme. The scheme consists of three colors, the original color and two neighbors of the complement color.



162.8170, 27.6982, -17.3795



163.2000, -26.7206, 30.5196



146.6610, 27.2821, -70.7397

Square

The Square scheme is like the rectangle color scheme, but the four colors are evenly spaced on the color wheel.



163.2000, -26.7206, 30.5196



152.4110, -3.6536, -41.5794



154.5310, 31.2902, -49.5777



167.9520, 6.4327, 36.8761

Rectangle

The Rectangle color scheme consists of four colors that form a rectangle on the color wheel.



163.2000, -26.7206, 30.5196



158.2230, -21.8019, -7.2116



154.5310, 31.2902, -49.5777



166.2820, 22.5390, 4.1377

Sweetspot

The Sweet Spot groups the original color and five complimentary colors.



163.2000, -26.7206, 30.5196



241.8460, -9.7841, 11.5361



140.5130, 5.6631, 50.4161



119.7360, -6.2788, 7.2475



0.0000, 0.0000, 0.0000



128.0000, 0.0000, 0.0000

Same Dimension

The Same Dimension uses a secret algorithm to generate beautiful new colors.



163.2000, -26.7206, 30.5196



201.1130, -41.4677, 47.2589



187.5550, -38.7276, 8.2833



95.6260, -2.7736, 2.9590



99.2190, -48.9150, 55.9359



21.9170, -10.8051, 12.3508

Inverse Universe

The Inverse Universe completely reimagines the original color for something new.



143.8000, 26.7206, -30.5196



170.8870, 41.4677, -47.2589



119.4450, 38.7276, -8.2833



93.3740, 2.7736, -2.9590



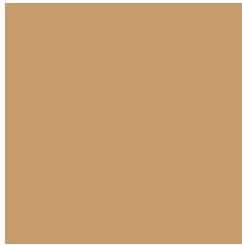
63.7810, 48.9150, -55.9359



14.0830, 10.8051, -12.3508

Previews

White Background



This preview shows how the YUV color 163.2000, -26.7206, 30.5196 looks on a white background.

Color Contrast Check

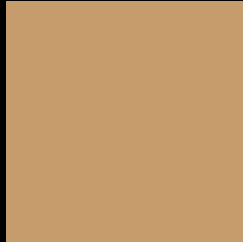
Large Text (above 18pt) WCAG AA × Fail

Any Text WCAG AA × Fail

Large Text (above 18pt) WCAG AAA × Fail

Any Text WCAG AAA × Fail

Black Background



This preview shows how the YUV color 163.2000, -26.7206, 30.5196 looks on a black background.

Color Contrast Check

Large Text (above 18pt) WCAG AA ✓ Pass

Any Text WCAG AA ✓ Pass

Large Text (above 18pt) WCAG AAA ✓ Pass

Any Text WCAG AAA ✓ Pass

If you want to check with other color combinations, try the [Color Contrast Checker](#).

YUV 163.2000, -26.7206, 30.5196 Background



This preview shows how black text looks on a background with the YUV color 163.2000, -26.7206, 30.5196.



This preview shows how white text looks on a background with the YUV color 163.2000, -26.7206, 30.5196.

Color Blindness Simulation

Color vision deficiency is a very complex topic, and I could not describe the different causes any better than Wikipedia does, so if you want to learn more, you should check out their [article about color blindness](#).

Dichromacy



Original Color

163.2000, -26.7206, 30.5196

Protanopia

161.9590, -24.6298, 13.1910

Deuteranopia

163.1890, -26.7152, 28.7752



Tritanopia

166.5140, -2.7184, 31.9982

Trichromacy



Original Color

163.2000, -26.7206, 30.5196

Protanomaly

162.4760, -25.3777, 19.7535

Deuteranomaly

163.4880, -26.8626, 29.3900

Tritanomaly

165.5110, -11.5909, 31.1239

Monochromacy



Original Color

163.2000, -26.7206, 30.5196

Achromatopsia

163.0000, 0.0000, 0.0000

Achromatomaly

162.8460, -9.7841, 11.5361

CSS Examples

Text

The CSS property to change the color of the text to YUV 163.2000, -26.7206, 30.5196 is called "color". The color property can be set on classes, ids or directly on the HTML element.

This example shows how text in the color `rgb(198, 156, 109)` looks like.

```
.text, #text, p{  
    color:rgb(198, 156, 109)  
}
```

If you want to add a text shadow in that color use the text-shadow property, you can generate a text shadow directly with our [CSS Text Shadow Generator](#).

Here you see how black text with a 4 pixel rgb(198, 156, 109) colored shadow looks like.

```
.shadow{ text-shadow: 4px 4px 2px rgb(198, 156, 109) }
```

Border

The CSS property to change the border of an element to YUV 163.2000, -26.7206, 30.5196 is called "border".

The border property can be set on classes, ids or directly on the HTML element.

This example shows the color as border, it can be applied via the CSS property "border" or "border-color".

```
.border, #border, table{ border:4px solid rgb(198, 156, 109) }
```


If only the border color should be changed use the property border-color.

```
.border{ border-color:rgb(198, 156, 109) }
```

If you want to add a box shadow in that color use:

Here you see how a box with a 4 pixel rgb(198, 156, 109) colored shadow looks like.

```
.boxshadow{ -moz-box-shadow:4px 4px 4px  
4px rgb(198, 156, 109); -webkit-box-  
shadow:4px 4px 4px 4px rgb(198, 156, 109);  
box-shadow:4px 4px 4px 4px rgb(198, 156,  
109) }
```

Background

The CSS property to change the background color of an element to YUV 163.2000, -26.7206, 30.5196 is called "background". The background property can be set on classes, ids or directly on the HTML element.

```
.background, #background, body{  
background: rgb(198, 156, 109) }
```

If only the background color should be changed can be used:

```
.background{ background-color: rgb(198,  
156, 109) }
```

This example shows the color as background, it is applied via the CSS property "background".

To optimize and compress your CSS code, you can use our [online CSS compressor and optimizer](#) based on csstidy. If you want to create a linear or radial gradient as background or border, check our [CSS Gradient Generator](#).

Hey! You found this booklet interesting? Support Converting Colors with the new Membership Option!

The pro membership hides all ads, plus gives you double the colors in the color bucket, and more awesome pro features!

[Learn more, Memberships starting at \\$2.50/m!](#)

**Follow me
on Twitter!**

@ConvertingColor