

Converting Colors

YUV(163.3590, -4.1210,
61.9522)

Have a look what the booklet for
YUV(163.3590, -4.1210, 61.9522)
contains.

| | |
|--|----|
| YUV(163.3590, -4.1210, 61.9522) | 3 |
| <i>Conversions</i> | 4 |
| <i>Details</i> | 6 |
| <i>Harmonies</i> | 12 |
| <i>Previews</i> | 24 |
| <i>Color Blindness Simulation</i> | 28 |
| <i>CSS Examples</i> | 31 |

Color

**YUV(163.3590, -4.1210,
61.9522)**

Conversions

Conversions Part 1

| Format | Color |
|-------------|----------------------------|
| Hex | EA819B |
| RGB | 234, 129, 155 |
| RGB Percent | 92%, 51%, 61% |
| CMY | 0.0824, 0.4941, 0.3922 |
| CMYK | 0.00, 0.45, 0.34, 0.08 |
| HSL | 345°, 71%, 71% |
| HSV | 345°, 45%, 92% |
| XYZ | 47.6983, 35.5595, 35.3600 |
| YIQ | 163.3590, 54.2340, 30.3460 |

Conversions

Conversions Part 2

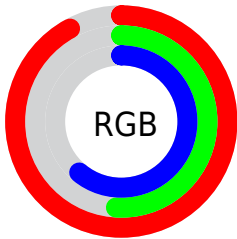
| Format | Color |
|-------------------------------------|--|
| RYB | 234, 129, 155 |
| Decimal | 15368603 |
| CIELab | 66.18, 43.10, 4.22 |
| CIElCh | 66, 43.310, 5.593 |
| Yxy | 35.5595, 0.4021, 0.2998 |
| Android (android.graphics.Color) | 4293558683 (0xFFEA819B) |
| YUV | 163.3590, -4.1210, 61.9522 |
| Hunter-Lab | 59.6318, 38.4232, 6.5849 |

Details

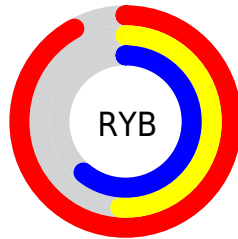
The YUV color **163.3590, -4.1210, 61.9522** is a light color, and the websafe version is hex **FF9999**. A complement of this color would be **199.6410, 4.1210, -61.9522**, and the grayscale version is **163.0000, 0.0000, 0.0000**.

A 20% lighter version of the original color is **208.0790, 0.4541, 41.1497**, and **108.7930, -2.3629, 58.0635** is the 20% darker color. If you saturate the color by 10%, you get **147.8060, -5.3274, 75.5921**, and if you desaturate by 10%, it is **178.9120, -2.9146, 48.3122**.

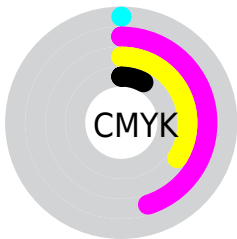
Distribution



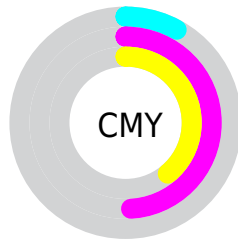
- Red (92%)
- Green (51%)
- Blue (61%)



- Red (92%)
- Yellow (51%)
- Blue (61%)



- Cyan (0%)
- Magenta (45%)
- Yellow (34%)
- Black (8%)



- Cyan (8%)
- Magenta (49%)
- Yellow (39%)

Brightness & Saturation Gradients

These gradients show how the YUV color 163.3590, -4.1210, 61.9522 changes by changing the brightness by 10 percent. The first figure shows a shift by +10% for each color and the second figure -10%.

Similar to the brightness gradients but the following saturation gradients show a change of the YUV color 163.3590, -4.1210, 61.9522 by changing the saturation by 10% instead.

163.3590, -4.1210,
61.9522

163.3590, -4.1210,
61.9522

255.0000, 0.0000,
0.0000

136.1630, -3.5314,
59.4930

208.0790, 0.4541,
41.1497

108.7930, -2.3629,
58.0635

227.8210, 5.0182,
23.8360

82.4230, -1.1945,
56.6340

246.7820, 4.0515,
7.2072

54.9930, 0.9895,
56.1341

31.6120, 2.1633,
52.9603

21.0310, -3.4663,
38.5608

12.0740, -5.4595,

24.4911

■ 0.0000, 0.0000,
0.0000

■ 163.3590, -4.1210,
61.9522

■ 163.3590, -4.1210,
61.9522

■ 147.8060, -5.3274,
75.5921

■ 178.9120, -2.9146,
48.3122

■ 131.7800, -5.8075,
89.6469

■ 194.9380, -2.4344,
34.2574

■ 116.2270, -7.0139,
103.2869

■ 210.4910, -1.2281,
20.6174

■ 100.2010, -7.4941,
117.3417

■ 226.5170, -0.7479,
6.5626

■ 84.6480, -8.7005,
130.9817

■ 242.0700, 0.4585,
-7.0774

■ 76.5780, -9.1590,
138.0591

■ 248.7210, 3.0955,
-12.9103

Harmonies

Analogous

The Analogous color harmony consists of three colors that are next to each other on the color wheel.



165.6460, 13.9785, 43.2835



163.3590, -4.1210, 61.9522



161.7660, -21.5766, 60.7182

Triad

The Triadic color harmony groups three colors that are evenly spaced from another and form a triangle on the color wheel.



163.3590, -4.1210, 61.9522



152.8710, -28.0374, -13.9189



127.8850, 50.8357, -112.1551

Complementary

The Complementary color scheme is a pair of colors which are on the opposite of each other on the color wheel.



163.3590, -4.1210, 61.9522



199.6410, 4.1210, -61.9522

Split Complementary

Split-complementary colors differ from the complementary color scheme. The scheme consists of three colors, the original color and two neighbors of the complement color.



129.0300, 37.4532, -113.1593



163.3590, -4.1210, 61.9522



144.6780, -8.7153, -51.4606

Square

The Square scheme is like the rectangle color scheme, but the four colors are evenly spaced on the color wheel.



163.3590, -4.1210, 61.9522



157.0770, -37.0130, 18.3495



125.2850, 20.5655, -109.8749



155.4150, 40.7144, -38.9520

Rectangle

The Rectangle color scheme consists of four colors that form a rectangle on the color wheel.



163.3590, -4.1210, 61.9522



160.5940, -30.8588, 51.2221



125.2850, 20.5655, -109.8749



128.8480, 46.9099, -112.9997

Sweetspot

The Sweet Spot groups the original color and five complimentary colors.



163.3590, -4.1210, 61.9522



232.7790, -1.3700, 19.4878



164.5910, 34.2186, 38.0697



113.8490, -0.9116, 12.4104



0.0000, 0.0000, 0.0000



128.0000, 0.0000, 0.0000

Same Dimension

The Same Dimension uses a secret algorithm to generate beautiful new colors.



163.3590, -4.1210, 61.9522



162.1380, -5.4910, 81.4400



175.6570, -23.0019, 51.1668



109.5170, -0.7479, 6.5626



59.2490, -7.0248, 106.7756



17.6280, -2.2816, 31.8982

Inverse Universe

The Inverse Universe completely reimagines the original color for something new.



163.3590, -4.1210, 61.9522



162.1380, -5.4910, 81.4400



187.3430, 23.0019, -51.1668



109.5170, -0.7479, 6.5626



59.2490, -7.0248, 106.7756



17.6280, -2.2816, 31.8982

Previews

White Background



This preview shows how the YUV color 163.3590, -4.1210, 61.9522 looks on a white background.

Color Contrast Check

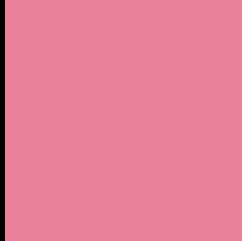
Large Text (above 18pt) WCAG AA × Fail

Any Text WCAG AA × Fail

Large Text (above 18pt) WCAG AAA × Fail

Any Text WCAG AAA × Fail

Black Background



This preview shows how the YUV color 163.3590, -4.1210, 61.9522 looks on a black background.

Color Contrast Check

Large Text (above 18pt) WCAG AA ✓ Pass

Any Text WCAG AA ✓ Pass

Large Text (above 18pt) WCAG AAA ✓ Pass

Any Text WCAG AAA ✓ Pass

If you want to check with other color combinations, try the [Color Contrast Checker](#).

YUV 163.3590, -4.1210, 61.9522 Background



This preview shows how black text looks on a background with the YUV color 163.3590, -4.1210, 61.9522.



This preview shows how white text looks on a background with the YUV color 163.3590, -4.1210,

61.9522.

Color Blindness Simulation

Color vision deficiency is a very complex topic, and I could not describe the different causes any better than Wikipedia does, so if you want to learn more, you should check out their [article about color blindness](#).

Dichromacy



Original Color

163.3590, -4.1210, 61.9522

Protanopia

161.7810, 5.5310, -0.6849

Deuteranopia

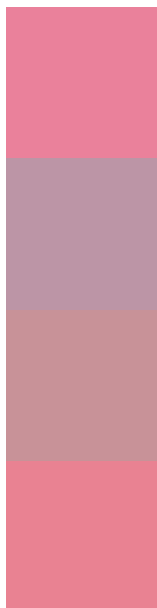
162.7910, -6.3060, 15.9693



Tritanopia

162.6380, -10.6675, 61.7075

Trichromacy



Original Color

163.3590, -4.1210, 61.9522

Protanomaly

162.5990, 1.6767, 22.2767

Deuteranomaly

162.8300, -5.3392, 32.5981

Tritanomaly

162.6210, -8.1942, 61.7224

Monochromacy



Original Color

163.3590, -4.1210, 61.9522

Achromatopsia

163.0000, 0.0000, 0.0000

Achromatomaly

163.3880, -1.6703, 22.4617

CSS Examples

Text

The CSS property to change the color of the text to YUV 163.3590, -4.1210, 61.9522 is called "color". The color property can be set on classes, ids or directly on the HTML element.

This example shows how text in the color `rgb(234, 129, 155)` looks like.

```
.text, #text, p{  
    color:rgb(234, 129, 155)  
}
```

If you want to add a text shadow in that color use the text-shadow property, you can generate a text shadow directly with our [CSS Text Shadow Generator](#).

Here you see how black text with a 4 pixel rgb(234, 129, 155) colored shadow looks like.

```
.shadow{ text-shadow: 4px 4px 2px rgb(234, 129, 155) }
```

Border

The CSS property to change the border of an element to YUV 163.3590, -4.1210, 61.9522 is called "border". The border property can be set on classes, ids or directly on the HTML element.

This example shows the color as border, it can be applied via the CSS property "border" or "border-color".

```
.border, #border, table{ border:4px solid rgb(234, 129, 155) }
```


If only the border color should be changed use the property `border-color`.

```
.border{ border-color:rgb(234, 129, 155) }
```

If you want to add a box shadow in that color use:

Here you see how a box with a 4 pixel `rgb(234, 129, 155)` colored shadow looks like.

```
.boxshadow{ -moz-box-shadow:4px 4px 4px  
4px rgb(234, 129, 155); -webkit-box-  
shadow:4px 4px 4px 4px rgb(234, 129, 155);  
box-shadow:4px 4px 4px 4px rgb(234, 129,  
155) }
```

Background

The CSS property to change the background color of an element to YUV 163.3590, -4.1210, 61.9522 is called "background". The background property can be set on classes, ids or directly on the HTML element.

```
.background, #background, body{  
background: rgb(234, 129, 155) }
```

If only the background color should be changed can be used:

```
.background{ background-color: rgb(234,  
129, 155) }
```

This example shows the color as background, it is applied via the CSS property "background".

To optimize and compress your CSS code, you can use our [online CSS compressor and optimizer](#) based on csstidy. If you want to create a linear or radial gradient as background or border, check our [CSS Gradient Generator](#).

Hey! You found this booklet interesting? Support Converting Colors with the new Membership Option!

The pro membership hides all ads, plus gives you double the colors in the color bucket, and more awesome pro features!

[Learn more, Memberships starting at \\$2.50/m!](#)

**Follow me
on Twitter!**

@ConvertingColor