

Converting Colors

YUV(163.4740, -15.5167,
30.2793)

Have a look what the booklet for
YUV(163.4740, -15.5167, 30.2793)
contains.

YUV(163.4740, -15.5167, 30.2793)	3
<i>Conversions</i>	4
<i>Details</i>	6
<i>Harmonies</i>	12
<i>Previews</i>	24
<i>Color Blindness Simulation</i>	28
<i>CSS Examples</i>	31

Color

**YUV(163.4740, -15.5167,
30.2793)**

Conversions

Conversions Part 1

Format	Color
Hex	C69884
RGB	198, 152, 132
RGB Percent	78%, 60%, 52%
CMY	0.2235, 0.4039, 0.4824
CMYK	0.00, 0.23, 0.33, 0.22
HSL	18°, 37%, 65%
HSV	18°, 33%, 78%
XYZ	38.6818, 36.1282, 26.7645
YIQ	163.4740, 33.8360, 3.5320

Conversions

Conversions Part 2

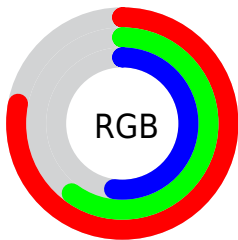
Format	Color
R _Y B	198, 161, 132
Decimal	13015172
CIE Lab	66.62, 14.42, 17.16
CIE LCh	67, 22.415, 49.957
Yxy	36.1282, 0.3808, 0.3557
Android (android.graphics.Color)	4291205252 (0xFFC69884)
YUV	163.4740, -15.5167, 30.2793
Hunter-Lab	60.1067, 9.6872, 15.6739

Details

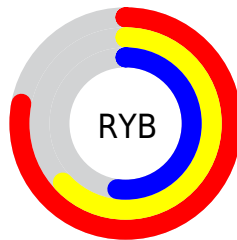
The YUV color $163.4740, -15.5167, 30.2793$ is a light color, and the websafe version is hex $CC9999$. A complement of this color would be $166.5260, 15.5167, -30.2793$, and the grayscale version is $164.0000, 0.0000, 0.0000$.

A 20% lighter version of the original color is $218.2570, -16.3957, 32.2236$, and $111.3920, -14.4903, 27.7202$ is the 20% darker color. If you saturate the color by 10%, you get $152.9760, -20.2012, 39.4860$, and if you desaturate by 10%, it is $173.9720, -10.8322, 21.0726$.

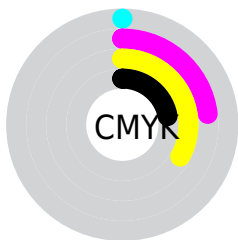
Distribution



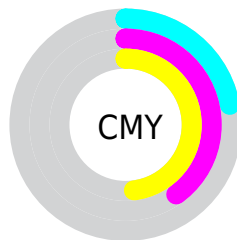
- Red (78%)
- Green (60%)
- Blue (52%)



- Red (78%)
- Yellow (63%)
- Blue (52%)



- Cyan (0%)
- Magenta (23%)
- Yellow (33%)
- Black (22%)



- Cyan (22%)
- Magenta (40%)
- Yellow (48%)

Brightness & Saturation Gradients

These gradients show how the YUV color 163.4740, -15.5167, 30.2793 changes by changing the brightness by 10 percent. The first figure shows a shift by +10% for each color and the second figure -10%.

Similar to the brightness gradients but the following saturation gradients show a change of the YUV color 163.4740, -15.5167, 30.2793 by changing the saturation by 10% instead.

■ 163.4740,
-15.5167, 30.2793

■ 163.4740,
-15.5167, 30.2793

■ 255.0000, 0.0000,
0.0000

■ 136.9900,
-14.7851, 28.9498

■ 218.2570,
-16.3957, 32.2236

■ 111.3920,
-14.4903, 27.7202

■ 238.4720,
-12.5577, 14.4951

■ 86.6090, -13.6112,
25.7759

■ 253.4040, -6.1152,
1.3997

■ 62.8260, -12.7322,
23.8316

■ 40.1570, -11.4164,
21.7873

■ 19.0150, -9.3744,
20.1578

■ 0.0000, 0.0000,

0.0000

■ 163.4740,
-15.5167, 30.2793

■ 163.4740,
-15.5167, 30.2793

■ 152.9760,
-20.2012, 39.4860

■ 173.9720,
-10.8322, 21.0726

■ 142.4780,
-24.8857, 48.6928

■ 184.4700, -6.1477,
11.8658

■ 132.6810,
-29.4227, 57.2848

■ 194.2670, -1.6106,
3.2738

■ 122.1830,
-34.1072, 66.4915

■ 204.7650, 3.0739,
-5.9329

■ 111.6850,
-38.7917, 75.6983

■ 215.2630, 7.7583,
-15.1397

■ 101.1870,
-43.4762, 84.9050

■ 225.7610, 12.4428,
-24.3464

■ 94.4220, -46.5500,
90.8379

■ 234.4350, 10.1385,
-31.9535

■ 237.9570, 8.4022,
-35.0423

Harmonies

Analogous

The Analogous color harmony consists of three colors that are next to each other on the color wheel.



164.8580, -7.8180, 34.3275



163.4740, -15.5167, 30.2793



161.4850, -18.9731, 18.8687

Triad

The Triadic color harmony groups three colors that are evenly spaced from another and form a triangle on the color wheel.



163.4740, -15.5167, 30.2793



154.3890, -0.1918, -31.9132



162.7770, 18.3509, -5.9434

Complementary

The Complementary color scheme is a pair of colors which are on the opposite of each other on the color wheel.



163.4740, -15.5167, 30.2793



166.5260, 15.5167, -30.2793

Split Complementary

Split-complementary colors differ from the complementary color scheme. The scheme consists of three colors, the original color and two neighbors of the complement color.



158.9270, 20.7420, -26.2460



163.4740, -15.5167, 30.2793



152.8960, 10.8973, -42.0048

Square

The Square scheme is like the rectangle color scheme, but the four colors are evenly spaced on the color wheel.



163.4740, -15.5167, 30.2793



157.1540, -10.4289, -15.0441



154.8560, 18.3120, -40.2157



165.3620, 11.1605, 13.7145

Rectangle

The Rectangle color scheme consists of four colors that form a rectangle on the color wheel.



163.4740, -15.5167, 30.2793



160.4190, -18.9406, 8.4025



154.8560, 18.3120, -40.2157



161.9610, 19.2462, -13.1208

Sweetspot

The Sweet Spot groups the original color and five complimentary colors.



163.4740, -15.5167, 30.2793



241.5840, -5.7109, 11.7658



156.9780, 10.3638, 35.9763



119.7190, -3.8055, 7.2624



0.0000, 0.0000, 0.0000



128.0000, 0.0000, 0.0000

Same Dimension

The Same Dimension uses a secret algorithm to generate beautiful new colors.



163.4740, -15.5167, 30.2793



201.6950, -24.0066, 46.7485



182.8450, -25.0666, 13.2909



94.4520, -2.1948, 3.9886



77.5000, -38.2075, 74.9835



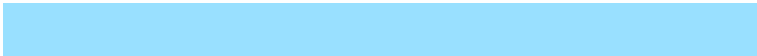
17.2210, -8.4900, 16.4692

Inverse Universe

The Inverse Universe completely reimagines the original color for something new.



166.5260, 15.5167, -30.2793



206.3050, 24.0066, -46.7485



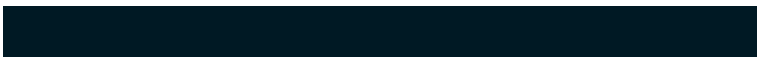
147.1550, 25.0666, -13.2909



94.5480, 2.1948, -3.9886



85.5000, 38.2075, -74.9835



18.7790, 8.4900, -16.4692

Previews

White Background



This preview shows how the YUV color 163.4740, -15.5167, 30.2793 looks on a white background.

Color Contrast Check

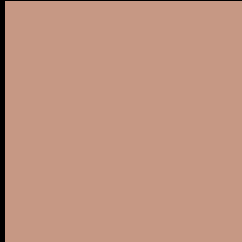
Large Text (above 18pt) WCAG AA × Fail

Any Text WCAG AA × Fail

Large Text (above 18pt) WCAG AAA × Fail

Any Text WCAG AAA × Fail

Black Background



This preview shows how the YUV color 163.4740, -15.5167, 30.2793 looks on a black background.

Color Contrast Check

Large Text (above 18pt) WCAG AA ✓ Pass

Any Text WCAG AA ✓ Pass

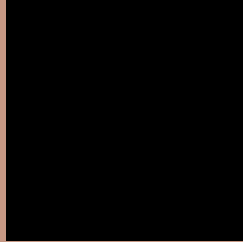
Large Text (above 18pt) WCAG AAA ✓ Pass

Any Text WCAG AAA ✓ Pass

If you want to check with other color combinations, try the [Color Contrast Checker](#).

YUV 163.4740, -15.5167, 30.2793

Background



This preview shows how black text looks on a background with the YUV color 163.4740, -15.5167, 30.2793.



This preview shows how white text looks on a background with the YUV color 163.4740, -15.5167, 30.2793.

30.2793.

Color Blindness Simulation

Color vision deficiency is a very complex topic, and I could not describe the different causes any better than Wikipedia does, so if you want to learn more, you should check out their [article about color blindness](#).

Dichromacy



Original Color

163.4740, -15.5167, 30.2793

Protanopia

161.8410, -12.2466, 8.0324

Deuteranopia

163.0170, -15.7844, 22.7871



Tritanopia

165.1010, -3.0078, 31.4834

Trichromacy



Original Color

163.4740, -15.5167, 30.2793

Protanomaly

162.2550, -13.4367, 16.4394

Deuteranomaly

163.3270, -15.9372, 25.1462

Tritanomaly

164.2490, -7.5178, 31.3536

Monochromacy



Original Color

163.4740, -15.5167, 30.2793

Achromatopsia

163.0000, 0.0000, 0.0000

Achromatomaly

163.2850, -5.5635, 11.1511

CSS Examples

Text

The CSS property to change the color of the text to YUV 163.4740, -15.5167, 30.2793 is called "color". The color property can be set on classes, ids or directly on the HTML element.

This example shows how text in the color `rgb(198, 152, 132)` looks like.

```
.text, #text, p{  
    color:rgb(198, 152, 132)  
}
```

If you want to add a text shadow in that color use the text-shadow property, you can generate a text shadow directly with our [CSS Text Shadow Generator](#).

Here you see how black text with a 4 pixel rgb(198, 152, 132) colored shadow looks like.

```
.shadow{ text-shadow: 4px 4px 2px rgb(198, 152, 132) }
```

Border

The CSS property to change the border of an element to YUV 163.4740, -15.5167, 30.2793 is called "border".

The border property can be set on classes, ids or directly on the HTML element.

This example shows the color as border, it can be applied via the CSS property "border" or "border-color".

```
.border, #border, table{ border:4px solid rgb(198, 152, 132) }
```


If only the border color should be changed use the property `border-color`.

```
.border{ border-color:rgb(198, 152, 132) }
```

If you want to add a box shadow in that color use:

Here you see how a box with a 4 pixel `rgb(198, 152, 132)` colored shadow looks like.

```
.boxshadow{ -moz-box-shadow:4px 4px 4px  
4px rgb(198, 152, 132); -webkit-box-  
shadow:4px 4px 4px 4px rgb(198, 152, 132);  
box-shadow:4px 4px 4px 4px rgb(198, 152,  
132) }
```

Background

The CSS property to change the background color of an element to YUV 163.4740, -15.5167, 30.2793 is called "background". The background property can be set on classes, ids or directly on the HTML element.

```
.background, #background, body{  
background: rgb(198, 152, 132) }
```

If only the background color should be changed can be used:

```
.background{ background-color: rgb(198,  
152, 132) }
```

This example shows the color as background, it is applied via the CSS property "background".

To optimize and compress your CSS code, you can use our [online CSS compressor and optimizer](#) based on csstidy. If you want to create a linear or radial gradient as background or border, check our [CSS Gradient Generator](#).

Hey! You found this booklet interesting? Support Converting Colors with the new Membership Option!

The pro membership hides all ads, plus gives you double the colors in the color bucket, and more awesome pro features!

[Learn more, Memberships starting at \\$2.50/m!](#)

**Follow me
on Twitter!**

@ConvertingColor