

Converting Colors

YUV(163.7340, -29.9419,
37.0673)

Have a look what the booklet for
YUV(163.7340, -29.9419, 37.0673)
contains.

YUV(163.7340, -29.9419, 37.0673)	3
<i>Conversions</i>	4
<i>Details</i>	6
<i>Harmonies</i>	12
<i>Previews</i>	24
<i>Color Blindness Simulation</i>	28
<i>CSS Examples</i>	31

Color

**YUV(163.7340, -29.9419,
37.0673)**

Conversions

Conversions Part 1

Format	Color
Hex	CE9A67
RGB	206, 154, 103
RGB Percent	81%, 60%, 40%
CMY	0.1922, 0.3961, 0.5961
CMYK	0.00, 0.25, 0.50, 0.19
HSL	30°, 51%, 61%
HSV	30°, 50%, 81%
XYZ	39.4574, 37.2123, 17.9350
YIQ	163.7340, 47.3630, -4.8370

Conversions

Conversions Part 2

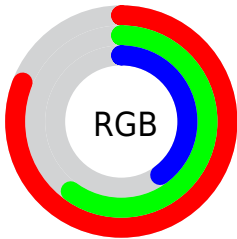
Format	Color
R _Y B	206, 204, 103
Decimal	13539943
CIE Lab	67.44, 13.35, 34.22
CIE LCh	67, 36.735, 68.682
Yxy	37.2123, 0.4171, 0.3933
Android (android.graphics.Color)	4291730023 (0xFFCE9A67)
YUV	163.7340, -29.9419, 37.0673
Hunter-Lab	61.0019, 8.7045, 25.2696

Details

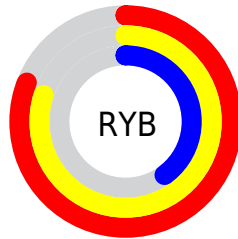
The YUV color **163.7340, -29.9419, 37.0673** is a light color, and the websafe version is hex **CC9966**. A complement of this color would be **145.2660, 29.9419, -37.0673**, and the grayscale version is **164.0000, 0.0000, 0.0000**.

A 20% lighter version of the original color is **216.0110, -30.0784, 34.1934**, and **111.2820, -27.7470, 33.0787** is the 20% darker color. If you saturate the color by 10%, you get **155.4700, -36.2207, 44.3148**, and if you desaturate by 10%, it is **171.9980, -23.6630, 29.8198**.

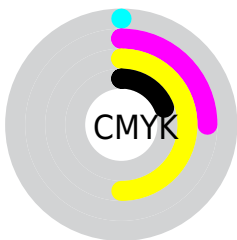
Distribution



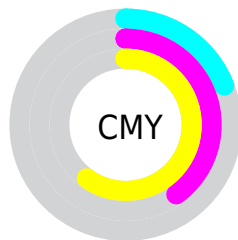
- Red (81%)
- Green (60%)
- Blue (40%)



- Red (81%)
- Yellow (80%)
- Blue (40%)



- Cyan (0%)
- Magenta (25%)
- Yellow (50%)
- Black (19%)



- Cyan (19%)
- Magenta (40%)
- Yellow (60%)

Brightness & Saturation Gradients

These gradients show how the YUV color 163.7340, -29.9419, 37.0673 changes by changing the brightness by 10 percent. The first figure shows a shift by +10% for each color and the second figure -10%.

Similar to the brightness gradients but the following saturation gradients show a change of the YUV color 163.7340, -29.9419, 37.0673 by changing the saturation by 10% instead.

■ 163.7340,
-29.9419, 37.0673

■ 163.7340,
-29.9419, 37.0673

255.0000, 0.0000,
0.0000

■ 136.9510,
-29.0628, 35.1230

■ 216.0110,
-30.0784, 34.1934

■ 111.2820,
-27.7470, 33.0787

■ 236.1120,
-26.6772, 16.5648

■ 86.4990, -26.8680,
31.1344

■ 249.8700,
-19.6559, 4.4990

■ 62.1890, -26.7152,
28.7752

■ 253.0620, -7.4256,
1.6996

■ 40.5890, -20.0104,
24.9164

■ 21.0750, -10.3900,
19.2282

■ 1.7940, -0.8844,

3.6887

■ 0.0000, 0.0000,
0.0000

■ 163.7340,
-29.9419, 37.0673

■ 163.7340,
-29.9419, 37.0673

■ 155.4700,
-36.2207, 44.3148

■ 171.9980,
-23.6630, 29.8198

■ 146.7330,
-41.7734, 51.9772

■ 180.7350,
-18.1104, 22.1574

■ 138.4690,
-48.0522, 59.2247

■ 188.9990,
-11.8315, 14.9099

■ 129.7320,
-53.6049, 66.8870

■ 197.7360, -6.2788,
7.2475

■ 121.4680,
-59.8837, 74.1346

■ 206.0000, 0.0000,
0.0000

■ 214.2640, 6.2788,
-7.2475

■ 223.0010, 11.8315,
-14.9099

■ 229.7830, 12.4320,
-20.8577

■ 236.2400, 9.2487,
-26.5205

Harmonies

Analogous

The Analogous color harmony consists of three colors that are next to each other on the color wheel.



165.3520, -20.3865, 52.3113



163.7340, -29.9419, 37.0673



160.9500, -31.0343, 14.0759

Triad

The Triadic color harmony groups three colors that are evenly spaced from another and form a triangle on the color wheel.



163.7340, -29.9419, 37.0673



142.1040, 15.2317, -79.0212



167.9670, 23.6803, 11.4299

Complementary

The Complementary color scheme is a pair of colors which are on the opposite of each other on the color wheel.



163.7340, -29.9419, 37.0673



145.2660, 29.9419, -37.0673

Split Complementary

Split-complementary colors differ from the complementary color scheme. The scheme consists of three colors, the original color and two neighbors of the complement color.



161.8420, 33.1089, -26.1714



163.7340, -29.9419, 37.0673



134.4120, 34.7999, -102.0933

Square

The Square scheme is like the rectangle color scheme, but the four colors are evenly spaced on the color wheel.



163.7340, -29.9419, 37.0673



151.4060, -6.1162, -45.0831



149.9140, 37.0174, -66.5766



168.8860, 9.9162, 39.5650

Rectangle

The Rectangle color scheme consists of four colors that form a rectangle on the color wheel.



163.7340, -29.9419, 37.0673



158.6810, -26.4647, -4.9822



149.9140, 37.0174, -66.5766



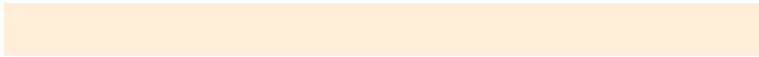
166.5140, 27.3546, -0.4508

Sweetspot

The Sweet Spot groups the original color and five complimentary colors.



163.7340, -29.9419, 37.0673



239.5150, -11.0999, 13.5803



139.8390, 7.9674, 58.0232



118.3340, -6.5737, 8.4771



0.0000, 0.0000, 0.0000



128.0000, 0.0000, 0.0000

Same Dimension

The Same Dimension uses a secret algorithm to generate beautiful new colors.



163.7340, -29.9419, 37.0673



192.3590, -44.5470, 54.9362



193.0840, -44.4114, 11.3273



97.9250, -2.9210, 3.5738



97.7680, -48.1996, 59.8395



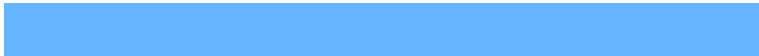
22.5150, -11.0999, 13.5803

Inverse Universe

The Inverse Universe completely reimagines the original color for something new.



145.2660, 29.9419, -37.0673



164.6410, 44.5470, -54.9362



115.9160, 44.4114, -11.3273



96.0750, 2.9210, -3.5738



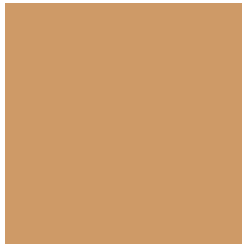
68.2320, 48.1996, -59.8395



15.4850, 11.0999, -13.5803

Previews

White Background



This preview shows how the YUV color 163.7340, -29.9419, 37.0673 looks on a white background.

Color Contrast Check

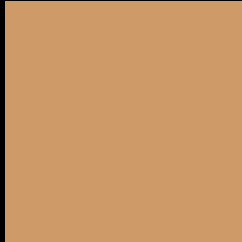
Large Text (above 18pt) WCAG AA × Fail

Any Text WCAG AA × Fail

Large Text (above 18pt) WCAG AAA × Fail

Any Text WCAG AAA × Fail

Black Background



This preview shows how the YUV color 163.7340, -29.9419, 37.0673 looks on a black background.

Color Contrast Check

Large Text (above 18pt) WCAG AA ✓ Pass

Any Text WCAG AA ✓ Pass

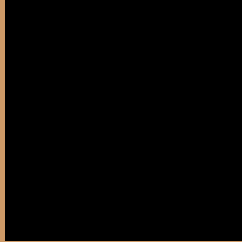
Large Text (above 18pt) WCAG AAA ✓ Pass

Any Text WCAG AAA ✓ Pass

If you want to check with other color combinations, try the [Color Contrast Checker](#).

YUV 163.7340, -29.9419, 37.0673

Background



This preview shows how black text looks on a background with the YUV color 163.7340, -29.9419, 37.0673.



This preview shows how white text looks on a background with the YUV color 163.7340, -29.9419, 37.0673.

Color Blindness Simulation

Color vision deficiency is a very complex topic, and I could not describe the different causes any better than Wikipedia does, so if you want to learn more, you should check out their [article about color blindness](#).

Dichromacy



Original Color

163.7340, -29.9419, 37.0673

Protanopia

161.9870, -27.1086, 14.9204

Deuteranopia

163.2880, -30.2150, 31.3194



Tritanopia

167.3900, -4.6293, 38.2460

Trichromacy



Original Color

163.7340, -29.9419, 37.0673

Protanomaly

162.5150, -27.8619, 23.2273

Deuteranomaly

163.5980, -30.3678, 33.6786

Tritanomaly

166.2730, -13.9386, 37.4716

Monochromacy



Original Color

163.7340, -29.9419, 37.0673

Achromatopsia

164.0000, 0.0000, 0.0000

Achromatomaly

163.6290, -10.6631, 13.4804

CSS Examples

Text

The CSS property to change the color of the text to YUV 163.7340, -29.9419, 37.0673 is called "color". The color property can be set on classes, ids or directly on the HTML element.

This example shows how text in the color `rgb(206, 154, 103)` looks like.

```
.text, #text, p{  
    color:rgb(206, 154, 103)  
}
```

If you want to add a text shadow in that color use the text-shadow property, you can generate a text shadow directly with our [CSS Text Shadow Generator](#).

Here you see how black text with a 4 pixel rgb(206, 154, 103) colored shadow looks like.

```
.shadow{ text-shadow: 4px 4px 2px rgb(206, 154, 103) }
```

Border

The CSS property to change the border of an element to YUV 163.7340, -29.9419, 37.0673 is called "border".

The border property can be set on classes, ids or directly on the HTML element.

This example shows the color as border, it can be applied via the CSS property "border" or "border-color".

```
.border, #border, table{ border:4px solid rgb(206, 154, 103) }
```


If only the border color should be changed use the property border-color.

```
.border{ border-color:rgb(206, 154, 103) }
```

If you want to add a box shadow in that color use:

Here you see how a box with a 4 pixel rgb(206, 154, 103) colored shadow looks like.

```
.boxshadow{ -moz-box-shadow:4px 4px 4px  
4px rgb(206, 154, 103); -webkit-box-  
shadow:4px 4px 4px 4px rgb(206, 154, 103);  
box-shadow:4px 4px 4px 4px rgb(206, 154,  
103) }
```

Background

The CSS property to change the background color of an element to YUV 163.7340, -29.9419, 37.0673 is called "background". The background property can be set on classes, ids or directly on the HTML element.

```
.background, #background, body{  
background: rgb(206, 154, 103) }
```

If only the background color should be changed can be used:

```
.background{ background-color: rgb(206,  
154, 103) }
```

This example shows the color as background, it is applied via the CSS property "background".

To optimize and compress your CSS code, you can use our [online CSS compressor and optimizer](#) based on csstidy. If you want to create a linear or radial gradient as background or border, check our [CSS Gradient Generator](#).

Hey! You found this booklet interesting? Support Converting Colors with the new Membership Option!

The pro membership hides all ads, plus gives you double the colors in the color bucket, and more awesome pro features!

[Learn more, Memberships starting at \\$2.50/m!](#)

**Follow me
on Twitter!**

@ConvertingColor