

Converting Colors

YUV(163.9020, -11.2907,
28.1499)

Have a look what the booklet for
YUV(163.9020, -11.2907, 28.1499)
contains.

YUV(163.9020, -11.2907, 28.1499)	3
<i>Conversions</i>	4
<i>Details</i>	6
<i>Harmonies</i>	12
<i>Previews</i>	24
<i>Color Blindness Simulation</i>	28
<i>CSS Examples</i>	31

Color

**YUV(163.9020, -11.2907,
28.1499)**

Conversions

Conversions Part 1

Format	Color
Hex	C4988D
RGB	196, 152, 141
RGB Percent	77%, 60%, 55%
CMY	0.2314, 0.4039, 0.4471
CMYK	0.00, 0.22, 0.28, 0.23
HSL	12°, 32%, 66%
HSV	12°, 28%, 77%
XYZ	38.8009, 36.1153, 30.1252
YIQ	163.9020, 29.7550, 5.9070

Conversions

Conversions Part 2

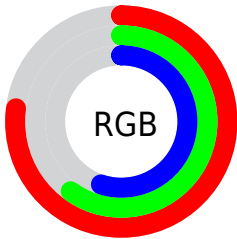
Format	Color
R_{YB}	196, 155, 141
Decimal	12884109
CIE _{Lab}	66.61, 14.84, 12.10
CIE _{LCh}	67, 19.153, 39.197
Yxy	36.1153, 0.3694, 0.3438
Android (android.graphics.Color)	4291074189 (0xFFC4988D)
YUV	163.9020, -11.2907, 28.1499
Hunter-Lab	60.0960, 10.0802, 12.3460

Details

The YUV color **163.9020, -11.2907, 28.1499** is a light color, and the websafe version is hex **CC9999**. A complement of this color would be **173.0980, 11.2907, -28.1499**, and the grayscale version is **164.0000, 0.0000, 0.0000**.

A 20% lighter version of the original color is **218.7990, -11.7329, 29.9943**, and **111.8200, -10.2643, 25.5909** is the 20% darker color. If you saturate the color by 10%, you get **152.2300, -15.3964, 38.3863**, and if you desaturate by 10%, it is **175.5740, -7.1850, 17.9136**.

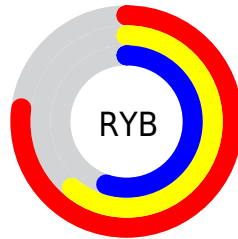
Distribution



Red (77%)

Green (60%)

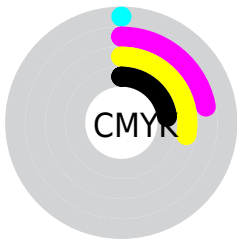
Blue (55%)



Red (77%)

Yellow (61%)

Blue (55%)

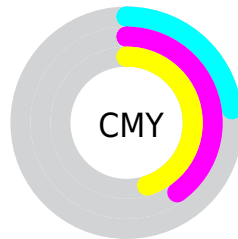


Cyan (0%)

Magenta (22%)

Yellow (28%)

Black (23%)



Cyan (23%)

Magenta (40%)

Yellow (45%)

Brightness & Saturation Gradients

These gradients show how the YUV color 163.9020, -11.2907, 28.1499 changes by changing the brightness by 10 percent. The first figure shows a shift by +10% for each color and the second figure -10%.

Similar to the brightness gradients but the following saturation gradients show a change of the YUV color 163.9020, -11.2907, 28.1499 by changing the saturation by 10% instead.

■ 163.9020,
-11.2907, 28.1499

■ 163.9020,
-11.2907, 28.1499

255.0000, 0.0000,
0.0000

■ 137.3040,
-10.9959, 26.9204

■ 218.7990,
-11.7329, 29.9943

■ 111.8200,
-10.2643, 25.5909

■ 239.6120, -8.1897,
13.4953

■ 87.2220, -9.9694,
24.3613

■ 254.5440, -1.7472,
0.3999

■ 63.4390, -9.0904,
22.4170

■ 40.9550, -8.3588,
21.0875

■ 19.0150, -9.3744,
20.1578

■ 0.2990, -0.1474,

0.6148

0.0000, 0.0000,
0.0000

163.9020,
-11.2907, 28.1499

163.9020,
-11.2907, 28.1499

152.2300,
-15.3964, 38.3863

175.5740, -7.1850,
17.9136

141.2590,
-19.3547, 48.0079

186.5450, -3.2267,
8.2920

129.5870,
-23.4604, 58.2442

198.2170, 0.8790,
-1.9443

118.0290,
-27.1293, 68.3806

209.7750, 4.5479,
-12.0807

106.9440,
-31.5244, 78.1021

220.8600, 8.9430,
-21.8022

■ 95.2720, -35.6301,
88.3385

■ 232.0760, 11.3015,
-31.6387

■ 83.7140, -39.2990,
98.4748

■ 237.3590, 8.6970,
-36.2718

■ 81.4970, -40.1780,
100.4191

Harmonies

Analogous

The Analogous color harmony consists of three colors that are next to each other on the color wheel.



164.8510, -3.8705, 28.1947



163.9020, -11.2907, 28.1499



162.5930, -16.0683, 20.5279

Triad

The Triadic color harmony groups three colors that are evenly spaced from another and form a triangle on the color wheel.



163.9020, -11.2907, 28.1499



156.5320, -3.7133, -22.3916



161.9890, 16.7674, -11.3914

Complementary

The Complementary color scheme is a pair of colors which are on the opposite of each other on the color wheel.



163.9020, -11.2907, 28.1499



173.0980, 11.2907, -28.1499

Split Complementary

Split-complementary colors differ from the complementary color scheme. The scheme consists of three colors, the original color and two neighbors of the complement color.



158.4170, 17.5424, -26.6757



163.9020, -11.2907, 28.1499



155.2840, 5.7760, -32.6981

Square

The Square scheme is like the rectangle color scheme, but the four colors are evenly spaced on the color wheel.



163.9020, -11.2907, 28.1499



158.8560, -11.7610, -7.7667



155.9230, 13.3490, -35.0125



164.5460, 12.0558, 6.5372

Rectangle

The Rectangle color scheme consists of four colors that form a rectangle on the color wheel.



163.9020, -11.2907, 28.1499



161.7230, -16.6254, 12.5209



155.9230, 13.3490, -35.0125



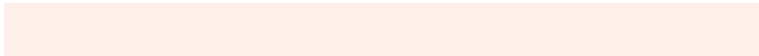
161.0700, 17.2205, -16.7244

Sweetspot

The Sweet Spot groups the original color and five complimentary colors.



163.9020, -11.2907, 28.1499



243.3280, -4.1057, 10.2363



162.4610, 11.1117, 29.4137



120.0610, -2.4951, 6.9625



0.0000, 0.0000, 0.0000



128.0000, 0.0000, 0.0000

Same Dimension

The Same Dimension uses a secret algorithm to generate beautiful new colors.



163.9020, -11.2907, 28.1499



204.5790, -18.0334, 44.2192



179.7510, -19.1042, 14.2504



91.1640, -2.0529, 5.1182



66.9230, -32.9930, 82.5055



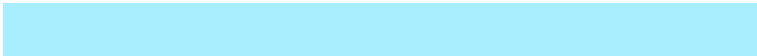
13.9760, -6.8902, 16.6840

Inverse Universe

The Inverse Universe completely reimagines the original color for something new.



173.0980, 11.2907, -28.1499



219.0080, 17.7441, -44.7340



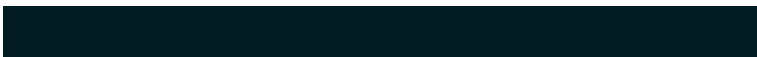
157.2490, 19.1042, -14.2504



92.8360, 2.0529, -5.1182



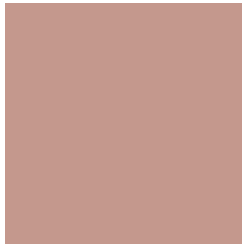
94.0770, 32.9930, -82.5055



19.6110, 6.6008, -17.1988

Previews

White Background



This preview shows how the YUV color 163.9020, -11.2907, 28.1499 looks on a white background.

Color Contrast Check

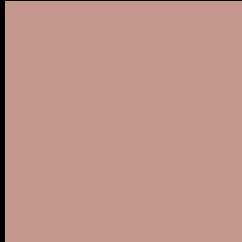
Large Text (above 18pt) WCAG AA × Fail

Any Text WCAG AA × Fail

Large Text (above 18pt) WCAG AAA × Fail

Any Text WCAG AAA × Fail

Black Background



This preview shows how the YUV color 163.9020, -11.2907, 28.1499 looks on a black background.

Color Contrast Check

Large Text (above 18pt) WCAG AA ✓ Pass

Any Text WCAG AA ✓ Pass

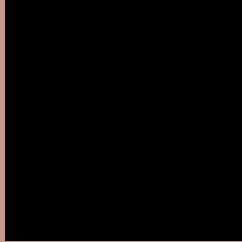
Large Text (above 18pt) WCAG AAA ✓ Pass

Any Text WCAG AAA ✓ Pass

If you want to check with other color combinations, try the [Color Contrast Checker](#).

YUV 163.9020, -11.2907, 28.1499

Background



This preview shows how black text looks on a background with the YUV color 163.9020, -11.2907, 28.1499.



This preview shows how white text looks on a background with the YUV color 163.9020, -11.2907, 28.1499.

Color Blindness Simulation

Color vision deficiency is a very complex topic, and I could not describe the different causes any better than Wikipedia does, so if you want to learn more, you should check out their [article about color blindness](#).

Dichromacy



Original Color

163.9020, -11.2907, 28.1499

Protanopia

162.2690, -8.0206, 5.9031

Deuteranopia

163.1460, -11.4110, 20.0430



Tritanopia

165.0190, -1.9814, 28.9243

Trichromacy



Original Color

163.9020, -11.2907, 28.1499

Protanomaly

162.6830, -9.2107, 14.3100

Deuteranomaly

163.7550, -11.7112, 23.0169

Tritanomaly

164.5090, -5.1809, 28.4946

Monochromacy



Original Color

163.9020, -11.2907, 28.1499

Achromatopsia

164.0000, 0.0000, 0.0000

Achromatomaly

164.3280, -4.1057, 10.2363

CSS Examples

Text

The CSS property to change the color of the text to YUV 163.9020, -11.2907, 28.1499 is called "color". The color property can be set on classes, ids or directly on the HTML element.

This example shows how text in the color `rgb(196, 152, 141)` looks like.

```
.text, #text, p{  
    color:rgb(196, 152, 141)  
}
```

If you want to add a text shadow in that color use the text-shadow property, you can generate a text shadow directly with our [CSS Text Shadow Generator](#).

Here you see how black text with a 4 pixel rgb(196, 152, 141) colored shadow looks like.

```
.shadow{ text-shadow: 4px 4px 2px rgb(196, 152, 141) }
```

Border

The CSS property to change the border of an element to YUV 163.9020, -11.2907, 28.1499 is called "border".

The border property can be set on classes, ids or directly on the HTML element.

This example shows the color as border, it can be applied via the CSS property "border" or "border-color".

```
.border, #border, table{ border:4px solid rgb(196, 152, 141) }
```


If only the border color should be changed use the property `border-color`.

```
.border{ border-color:rgb(196, 152, 141) }
```

If you want to add a box shadow in that color use:

Here you see how a box with a 4 pixel `rgb(196, 152, 141)` colored shadow looks like.

```
.boxshadow{ -moz-box-shadow:4px 4px 4px  
4px rgb(196, 152, 141); -webkit-box-  
shadow:4px 4px 4px 4px rgb(196, 152, 141);  
box-shadow:4px 4px 4px 4px rgb(196, 152,  
141) }
```

Background

The CSS property to change the background color of an element to YUV 163.9020, -11.2907, 28.1499 is called "background". The background property can be set on classes, ids or directly on the HTML element.

```
.background, #background, body{  
background: rgb(196, 152, 141) }
```

If only the background color should be changed can be used:

```
.background{ background-color: rgb(196,  
152, 141) }
```

This example shows the color as background, it is applied via the CSS property "background".

To optimize and compress your CSS code, you can use our [online CSS compressor and optimizer](#) based on csstidy. If you want to create a linear or radial gradient as background or border, check our [CSS Gradient Generator](#).

Hey! You found this booklet interesting? Support Converting Colors with the new Membership Option!

The pro membership hides all ads, plus gives you double the colors in the color bucket, and more awesome pro features!

[Learn more, Memberships starting at \\$2.50/m!](#)

**Follow me
on Twitter!**

@ConvertingColor