

Converting Colors

YUV(164.3300, -7.0647,
26.0206)

Have a look what the booklet for
YUV(164.3300, -7.0647, 26.0206)
contains.

YUV(164.3300, -7.0647, 26.0206)	3
<i>Conversions</i>	4
<i>Details</i>	6
<i>Harmonies</i>	12
<i>Previews</i>	24
<i>Color Blindness Simulation</i>	28
<i>CSS Examples</i>	31

Color

**YUV(164.3300, -7.0647,
26.0206)**

Conversions

Conversions Part 1

Format	Color
Hex	C29896
RGB	194, 152, 150
RGB Percent	76%, 60%, 59%
CMY	0.2392, 0.4039, 0.4118
CMYK	0.00, 0.22, 0.23, 0.24
HSL	3°, 27%, 67%
HSV	3°, 23%, 76%
XYZ	38.9814, 36.1278, 33.7730
YIQ	164.3300, 25.6740, 8.2820

Conversions

Conversions Part 2

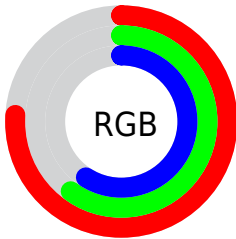
Format	Color
RYB	194, 152, 150
Decimal	12753046
CIELab	66.62, 15.38, 7.06
CIELCh	67, 16.920, 24.662
Yxy	36.1278, 0.3580, 0.3318
Android (android.graphics.Color)	4290943126 (0xFFC29896)
YUV	164.3300, -7.0647, 26.0206
Hunter-Lab	60.1064, 10.5781, 8.7602

Details

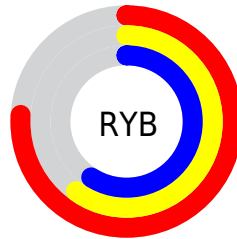
The YUV color $164.3300, -7.0647, 26.0206$ is a light color, and the websafe version is hex $CC9999$. A complement of this color would be $179.6700, 7.0647, -26.0206$, and the grayscale version is $164.0000, 0.0000, 0.0000$.

A 20% lighter version of the original color is $219.2270, -7.5069, 27.8649$, and $112.4330, -6.6225, 24.1763$ is the 20% darker color. If you saturate the color by 10%, you get $151.0110, -9.8654, 37.7014$, and if you desaturate by 10%, it is $177.6490, -4.2640, 14.3398$.

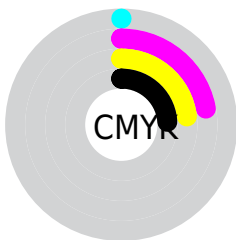
Distribution



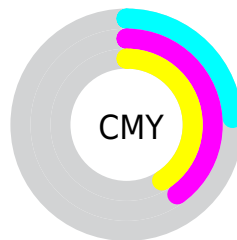
- Red (76%)
- Green (60%)
- Blue (59%)



- Red (76%)
- Yellow (60%)
- Blue (59%)



- Cyan (0%)
- Magenta (22%)
- Yellow (23%)
- Black (24%)



- Cyan (24%)
- Magenta (40%)
- Yellow (41%)

Brightness & Saturation Gradients

These gradients show how the YUV color 164.3300, -7.0647, 26.0206 changes by changing the brightness by 10 percent. The first figure shows a shift by +10% for each color and the second figure -10%.

Similar to the brightness gradients but the following saturation gradients show a change of the YUV color 164.3300, -7.0647, 26.0206 by changing the saturation by 10% instead.

 164.3300, -7.0647,
26.0206


 164.3300, -7.0647,
26.0206


255.0000, 0.0000,
0.0000


 137.7320, -6.7699,
24.7910


 219.2270, -7.5069,
27.8649


 112.4330, -6.6225,
24.1763

 240.6380, -4.2585,
12.5955

 87.8350, -6.3277,
22.9467

 64.0520, -5.4486,
21.0024

 41.5680, -4.7170,
19.6729

 19.6280, -5.7326,
18.7432

 0.5980, -0.2948,

1.2296

■ 0.0000, 0.0000,
0.0000

■ 164.3300, -7.0647,
26.0206

■ 164.3300, -7.0647,
26.0206

■ 151.0110, -9.8654,
37.7014

■ 177.6490, -4.2640,
14.3398

■ 138.1650,
-13.3923, 48.9673

■ 190.4950, -0.7370,
3.0739

■ 124.8460,
-16.1931, 60.6481

■ 203.8140, 2.0637,
-8.6069

■ 112.0000,
-19.7200, 71.9140

■ 216.6600, 5.5906,
-19.8728

■ 98.6810, -22.5207,
83.5948

■ 229.9790, 8.3914,
-31.5536

■ 85.9490, -25.6109,
94.7607

■ 236.7610, 8.9918,
-37.5014

■ 72.5160, -28.8484,
106.5415

■ 63.2890, -31.2015,
114.6335

Harmonies

Analogous

The Analogous color harmony consists of three colors that are next to each other on the color wheel.



165.1430, -0.0705, 22.6766



164.3300, -7.0647, 26.0206



163.2280, -12.4374, 22.6020

Triad

The Triadic color harmony groups three colors that are evenly spaced from another and form a triangle on the color wheel.



164.3300, -7.0647, 26.0206



158.3760, -7.0874, -13.4848



160.6140, 15.4733, -16.3245

Complementary

The Complementary color scheme is a pair of colors which are on the opposite of each other on the color wheel.



164.3300, -7.0647, 26.0206



179.6700, 7.0647, -26.0206

Split Complementary

Split-complementary colors differ from the complementary color scheme. The scheme consists of three colors, the original color and two neighbors of the complement color.



157.4940, 14.0535, -27.6202



164.3300, -7.0647, 26.0206



156.7750, 1.0969, -25.2357

Square

The Square scheme is like the rectangle color scheme, but the four colors are evenly spaced on the color wheel.



164.3300, -7.0647, 26.0206



159.9710, -12.8037, 0.0254



156.3920, 8.6807, -31.0388



163.1320, 13.2459, -1.8698

Rectangle

The Rectangle color scheme consists of four colors that form a rectangle on the color wheel.



164.3300, -7.0647, 26.0206



162.0270, -14.3103, 16.6393



156.3920, 8.6807, -31.0388



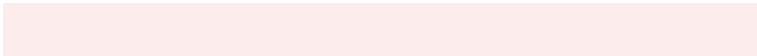
159.8800, 15.3422, -20.9428

Sweetspot

The Sweet Spot groups the original color and five complimentary colors.



164.3300, -7.0647, 26.0206



240.6700, -2.7953, 9.9364



168.0580, 12.2964, 22.7511



120.8760, -1.9109, 6.2477



0.0000, 0.0000, 0.0000



128.0000, 0.0000, 0.0000

Same Dimension

The Same Dimension uses a secret algorithm to generate beautiful new colors.



164.3300, -7.0647, 26.0206



206.0930, -10.8918, 40.2604



176.6570, -13.1419, 15.2098



90.5770, -1.7635, 5.6330



52.2480, -25.7583, 95.3755



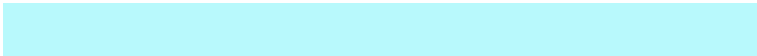
11.0410, -5.4432, 19.2580

Inverse Universe

The Inverse Universe completely reimagines the original color for something new.



179.6700, 7.0647, -26.0206



229.9070, 10.8918, -40.2604



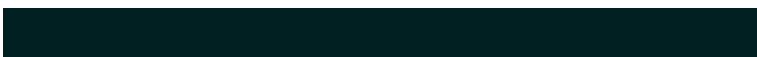
167.3430, 13.1419, -15.2098



93.4230, 1.7635, -5.6330



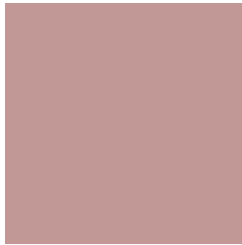
108.1650, 26.0477, -94.8607



22.5460, 5.1538, -19.7728

Previews

White Background



This preview shows how the YUV color 164.3300, -7.0647, 26.0206 looks on a white background.

Color Contrast Check

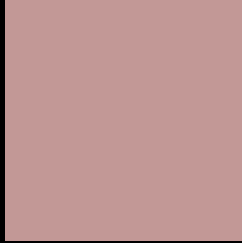
Large Text (above 18pt) WCAG AA × Fail

Any Text WCAG AA × Fail

Large Text (above 18pt) WCAG AAA × Fail

Any Text WCAG AAA × Fail

Black Background



This preview shows how the YUV color 164.3300, -7.0647, 26.0206 looks on a black background.

Color Contrast Check

Large Text (above 18pt) WCAG AA ✓ Pass

Any Text WCAG AA ✓ Pass

Large Text (above 18pt) WCAG AAA ✓ Pass

Any Text WCAG AAA ✓ Pass

If you want to check with other color combinations, try the [Color Contrast Checker](#).

YUV 164.3300, -7.0647, 26.0206

Background



This preview shows how black text looks on a background with the YUV color 164.3300, -7.0647, 26.0206.



This preview shows how white text looks on a background with the YUV color 164.3300, -7.0647,

Color Blindness Simulation

Color vision deficiency is a very complex topic, and I could not describe the different causes any better than Wikipedia does, so if you want to learn more, you should check out their [article about color blindness](#).

Dichromacy



Original Color

164.3300, -7.0647, 26.0206

Protanopia

162.6970, -3.7946, 3.7737

Deuteranopia

163.8620, -7.3270, 16.7840



Tritanopia

164.8230, -1.3917, 26.4652

Trichromacy



Original Color

164.3300, -7.0647, 26.0206

Protanomaly

163.1110, -4.9847, 12.1807

Deuteranomaly

163.8840, -7.3378, 20.2727

Tritanomaly

164.9540, -3.4283, 26.3503

Monochromacy



Original Color

164.3300, -7.0647, 26.0206

Achromatopsia

164.0000, 0.0000, 0.0000

Achromatomaly

164.3710, -2.6479, 9.3216

CSS Examples

Text

The CSS property to change the color of the text to YUV 164.3300, -7.0647, 26.0206 is called "color". The color property can be set on classes, ids or directly on the HTML element.

This example shows how text in the color `rgb(194, 152, 150)` looks like.

```
.text, #text, p{  
    color:rgb(194, 152, 150)  
}
```

If you want to add a text shadow in that color use the text-shadow property, you can generate a text shadow directly with our [CSS Text Shadow Generator](#).

Here you see how black text with a 4 pixel rgb(194, 152, 150) colored shadow looks like.

```
.shadow{ text-shadow: 4px 4px 2px rgb(194, 152, 150) }
```

Border

The CSS property to change the border of an element to YUV 164.3300, -7.0647, 26.0206 is called "border". The border property can be set on classes, ids or directly on the HTML element.

This example shows the color as border, it can be applied via the CSS property "border" or "border-color".

```
.border, #border, table{ border:4px solid rgb(194, 152, 150) }
```


If only the border color should be changed use the property `border-color`.

```
.border{ border-color:rgb(194, 152, 150) }
```

If you want to add a box shadow in that color use:

Here you see how a box with a 4 pixel `rgb(194, 152, 150)` colored shadow looks like.

```
.boxshadow{ -moz-box-shadow:4px 4px 4px  
4px rgb(194, 152, 150); -webkit-box-  
shadow:4px 4px 4px 4px rgb(194, 152, 150);  
box-shadow:4px 4px 4px 4px rgb(194, 152,  
150) }
```

Background

The CSS property to change the background color of an element to YUV 164.3300, -7.0647, 26.0206 is called "background". The background property can be set on classes, ids or directly on the HTML element.

```
.background, #background, body{  
background: rgb(194, 152, 150) }
```

If only the background color should be changed can be used:

```
.background{ background-color: rgb(194,  
152, 150) }
```

This example shows the color as background, it is applied via the CSS property "background".

To optimize and compress your CSS code, you can use our [online CSS compressor and optimizer](#) based on csstidy. If you want to create a linear or radial gradient as background or border, check our [CSS Gradient Generator](#).

Hey! You found this booklet interesting? Support Converting Colors with the new Membership Option!

The pro membership hides all ads, plus gives you double the colors in the color bucket, and more awesome pro features!

[Learn more, Memberships starting at \\$2.50/m!](#)

**Follow me
on Twitter!**

@ConvertingColor