

Converting Colors

YUV(164.3320, -13.4747,
28.6498)

Have a look what the booklet for
YUV(164.3320, -13.4747, 28.6498)
contains.

YUV(164.3320, -13.4747, 28.6498)	3
<i>Conversions</i>	4
<i>Details</i>	6
<i>Harmonies</i>	12
<i>Previews</i>	24
<i>Color Blindness Simulation</i>	28
<i>CSS Examples</i>	31

Color

**YUV(164.3320, -13.4747,
28.6498)**

Conversions

Conversions Part 1

Format	Color
Hex	C59989
RGB	197, 153, 137
RGB Percent	77%, 60%, 54%
CMY	0.2275, 0.4000, 0.4627
CMYK	0.00, 0.22, 0.30, 0.23
HSL	16°, 34%, 65%
HSV	16°, 30%, 77%
XYZ	38.9325, 36.4589, 28.6522
YIQ	164.3320, 31.3600, 4.3520

Conversions

Conversions Part 2

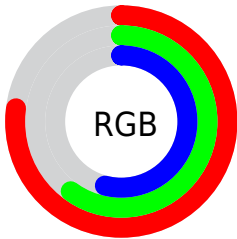
Format	Color
RYB	197, 159, 137
Decimal	12949897
CIELab	66.87, 14.14, 14.71
CIELCh	67, 20.405, 46.147
Yxy	36.4589, 0.3742, 0.3504
Android (android.graphics.Color)	4291139977 (0xFFC59989)
YUV	164.3320, -13.4747, 28.6498
Hunter-Lab	60.3812, 9.4259, 14.1324

Details

The YUV color $164.3320, -13.4747, 28.6498$ is a light color, and the websafe version is hex $CC9999$. A complement of this color would be $169.6680, 13.4747, -28.6498$, and the grayscale version is $164.0000, 0.0000, 0.0000$.

A 20% lighter version of the original color is $219.4140, -14.5011, 31.2089$, and $112.2500, -12.4482, 26.0907$ is the 20% darker color. If you saturate the color by 10%, you get $153.8340, -18.1592, 37.8566$, and if you desaturate by 10%, it is $174.8300, -8.7902, 19.4431$.

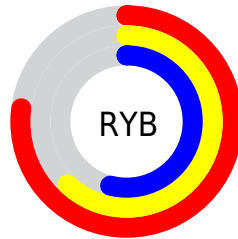
Distribution



Red (77%)

Green (60%)

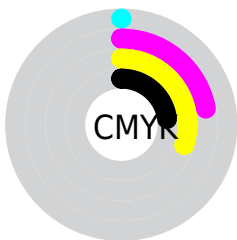
Blue (54%)



Red (77%)

Yellow (62%)

Blue (54%)

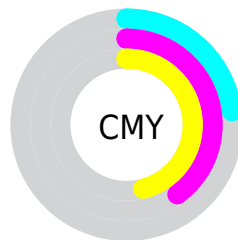


Cyan (0%)

Magenta (22%)

Yellow (30%)

Black (23%)



Cyan (23%)

Magenta (40%)

Yellow (46%)

Brightness & Saturation Gradients

These gradients show how the YUV color 164.3320, -13.4747, 28.6498 changes by changing the brightness by 10 percent. The first figure shows a shift by +10% for each color and the second figure -10%.

Similar to the brightness gradients but the following saturation gradients show a change of the YUV color 164.3320, -13.4747, 28.6498 by changing the saturation by 10% instead.

■ 164.3320,
-13.4747, 28.6498

■ 164.3320,
-13.4747, 28.6498

■ 255.0000, 0.0000,
0.0000

■ 137.8480,
-12.7431, 27.3203

■ 219.4140,
-14.5011, 31.2089

■ 112.2500,
-12.4482, 26.0907

■ 239.6290,
-10.6631, 13.4804

■ 87.7660, -11.7166,
24.7612

■ 254.0880, -3.4944,
0.7998

■ 63.9830, -10.8376,
22.8169

■ 41.2000, -9.9586,
20.8726

■ 19.6020, -9.6638,
19.6430

■ 0.5980, -0.2948,

1.2296

■ 0.0000, 0.0000,
0.0000

■ 164.3320,
-13.4747, 28.6498

■ 164.3320,
-13.4747, 28.6498

■ 153.8340,
-18.1592, 37.8566

■ 174.8300, -8.7902,
19.4431

■ 142.8630,
-22.1175, 47.4781

■ 185.8010, -4.8319,
9.8215

■ 132.3650,
-26.8019, 56.6849

■ 196.2990, -0.1474,
0.6148

■ 121.2800,
-31.1970, 66.4064

■ 207.3840, 4.2477,
-9.1068

■ 110.8960,
-35.4447, 75.5132

■ 217.8820, 8.9322,
-18.3135

■ 99.8110, -39.8398,
85.2348

■ 228.8530, 12.8905,
-27.9351

■ 90.0140, -44.3769,
93.8267

■ 237.0710, 8.8390,
-35.1423

■ 237.6580, 8.5496,
-35.6571

Harmonies

Analogous

The Analogous color harmony consists of three colors that are next to each other on the color wheel.



165.5910, -6.2074, 31.0537



164.3320, -13.4747, 28.6498



163.1260, -17.8101, 19.1835

Triad

The Triadic color harmony groups three colors that are evenly spaced from another and form a triangle on the color wheel.



164.3320, -13.4747, 28.6498



156.6670, -1.8078, -26.8950



163.4240, 17.0460, -7.3878

Complementary

The Complementary color scheme is a pair of colors which are on the opposite of each other on the color wheel.



164.3320, -13.4747, 28.6498



169.6680, 13.4747, -28.6498

Split Complementary

Split-complementary colors differ from the complementary color scheme. The scheme consists of three colors, the original color and two neighbors of the complement color.



159.4710, 18.9948, -25.8461



164.3320, -13.4747, 28.6498



154.9460, 8.4076, -36.7866

Square

The Square scheme is like the rectangle color scheme, but the four colors are evenly spaced on the color wheel.



164.3320, -13.4747, 28.6498



158.7630, -10.7292, -12.0702



155.8950, 15.8278, -36.7419



165.6390, 11.0240, 10.8406

Rectangle

The Rectangle color scheme consists of four colors that form a rectangle on the color wheel.



164.3320, -13.4747, 28.6498



161.7720, -17.6356, 9.8470



155.8950, 15.8278, -36.7419



162.0210, 18.2306, -14.0504

Sweetspot

The Sweet Spot groups the original color and five complimentary colors.



164.3320, -13.4747, 28.6498



242.3990, -5.1267, 11.0511



159.9560, 10.3747, 32.4876



119.8330, -3.3687, 7.1625



0.0000, 0.0000, 0.0000



128.0000, 0.0000, 0.0000

Same Dimension

The Same Dimension uses a secret algorithm to generate beautiful new colors.



164.3320, -13.4747, 28.6498



203.7810, -21.0910, 44.9191



181.9420, -22.1564, 13.2059



93.8650, -1.9054, 4.5034



74.5650, -36.7605, 77.5575



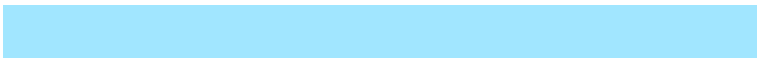
16.6340, -8.2006, 16.9840

Inverse Universe

The Inverse Universe completely reimagines the original color for something new.



169.6680, 13.4747, -28.6498



212.2190, 21.0910, -44.9191



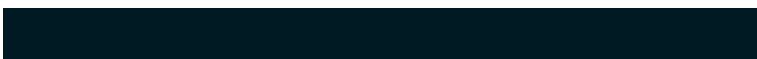
152.0580, 22.1564, -13.2059



95.1350, 1.9054, -4.5034



89.0220, 36.4712, -78.0723



19.3660, 8.2006, -16.9840

Previews

White Background



This preview shows how the YUV color 164.3320, -13.4747, 28.6498 looks on a white background.

Color Contrast Check

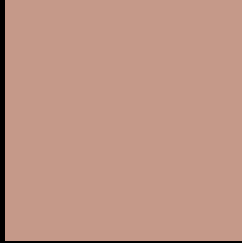
Large Text (above 18pt) WCAG AA × Fail

Any Text WCAG AA × Fail

Large Text (above 18pt) WCAG AAA × Fail

Any Text WCAG AAA × Fail

Black Background



This preview shows how the YUV color 164.3320, -13.4747, 28.6498 looks on a black background.

Color Contrast Check

Large Text (above 18pt) WCAG AA ✓ Pass

Any Text WCAG AA ✓ Pass

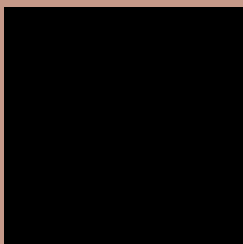
Large Text (above 18pt) WCAG AAA ✓ Pass

Any Text WCAG AAA ✓ Pass

If you want to check with other color combinations, try the [Color Contrast Checker](#).

YUV 164.3320, -13.4747, 28.6498

Background



This preview shows how black text looks on a background with the YUV color 164.3320, -13.4747, 28.6498.



This preview shows how white text looks on a background with the YUV color 164.3320, -13.4747, 28.6498.

Color Blindness Simulation

Color vision deficiency is a very complex topic, and I could not describe the different causes any better than Wikipedia does, so if you want to learn more, you should check out their [article about color blindness](#).

Dichromacy



Original Color

164.3320, -13.4747, 28.6498

Protanopia

162.4110, -10.0626, 7.5326

Deuteranopia

163.8750, -13.7424, 21.1576



Tritanopia

165.6170, -2.2762, 30.1539

Trichromacy



Original Color

164.3320, -13.4747, 28.6498

Protanomaly

163.1130, -11.3947, 14.8099

Deuteranomaly

164.1850, -13.8952, 23.5168

Tritanomaly

164.8790, -6.3493, 29.9241

Monochromacy



Original Color

164.3320, -13.4747, 28.6498

Achromatopsia

164.0000, 0.0000, 0.0000

Achromatomaly

164.1000, -4.9793, 10.4363

CSS Examples

Text

The CSS property to change the color of the text to YUV 164.3320, -13.4747, 28.6498 is called "color". The color property can be set on classes, ids or directly on the HTML element.

This example shows how text in the color `rgb(197, 153, 137)` looks like.

```
.text, #text, p{  
    color:rgb(197, 153, 137)  
}
```

If you want to add a text shadow in that color use the text-shadow property, you can generate a text shadow directly with our [CSS Text Shadow Generator](#).

Here you see how black text with a 4 pixel rgb(197, 153, 137) colored shadow looks like.

```
.shadow{ text-shadow: 4px 4px 2px rgb(197, 153, 137) }
```

Border

The CSS property to change the border of an element to YUV 164.3320, -13.4747, 28.6498 is called "border".

The border property can be set on classes, ids or directly on the HTML element.

This example shows the color as border, it can be applied via the CSS property "border" or "border-color".

```
.border, #border, table{ border:4px solid rgb(197, 153, 137) }
```


If only the border color should be changed use the property border-color.

```
.border{ border-color:rgb(197, 153, 137) }
```

If you want to add a box shadow in that color use:

Here you see how a box with a 4 pixel rgb(197, 153, 137) colored shadow looks like.

```
.boxshadow{ -moz-box-shadow:4px 4px 4px  
4px rgb(197, 153, 137); -webkit-box-  
shadow:4px 4px 4px 4px rgb(197, 153, 137);  
box-shadow:4px 4px 4px 4px rgb(197, 153,  
137) }
```

Background

The CSS property to change the background color of an element to YUV 164.3320, -13.4747, 28.6498 is called "background". The background property can be set on classes, ids or directly on the HTML element.

```
.background, #background, body{  
background: rgb(197, 153, 137) }
```

If only the background color should be changed can be used:

```
.background{ background-color: rgb(197,  
153, 137) }
```

This example shows the color as background, it is applied via the CSS property "background".

To optimize and compress your CSS code, you can use our [online CSS compressor and optimizer](#) based on csstidy. If you want to create a linear or radial gradient as background or border, check our [CSS Gradient Generator](#).

Hey! You found this booklet interesting? Support Converting Colors with the new Membership Option!

The pro membership hides all ads, plus gives you double the colors in the color bucket, and more awesome pro features!

[Learn more, Memberships starting at \\$2.50/m!](#)

**Follow me
on Twitter!**

@ConvertingColor