

# Converting Colors

YUV(164.6000, -3.2538,  
17.0138)

Have a look what the booklet for  
YUV(164.6000, -3.2538, 17.0138)  
contains.

<b>YUV(164.6000, -3.2538, 17.0138)</b> .....	3
<b><i>Conversions</i></b> .....	4
<b><i>Details</i></b> .....	6
<b><i>Harmonies</i></b> .....	12
<b><i>Previews</i></b> .....	24
<b><i>Color Blindness Simulation</i></b> .....	28
<b><i>CSS Examples</i></b> .....	31

# Color

**YUV(164.6000, -3.2538,  
17.0138)**

# Conversions

## Conversions Part 1

Format	Color
Hex	B89C9E
RGB	184, 156, 158
RGB Percent	72%, 61%, 62%
CMY	0.2784, 0.3882, 0.3804
CMYK	0.00, 0.15, 0.14, 0.28
HSL	356°, 16%, 67%
HSV	356°, 15%, 72%
XYZ	37.8272, 36.4359, 37.3869
YIQ	164.6000, 16.0460, 6.5580

# Conversions

## Conversions Part 2

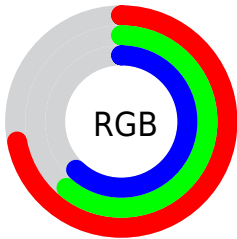
<b>Format</b>	<b>Color</b>
<a href="#">RYB</a>	<a href="#">184, 156, 158</a>
Decimal	<a href="#">12098718</a>
CIELab	<a href="#">66.85, 10.66, 2.80</a>
CIELCh	<a href="#">67, 11.025, 14.700</a>
Yxy	<a href="#">36.4359, 0.3388, 0.3263</a>
Android (android.graphics.Color)	<a href="#">4290288798 (0xFFB89C9E)</a>
YUV	<a href="#">164.6000, -3.2538, 17.0138</a>
Hunter-Lab	<a href="#">60.3622, 6.2269, 5.5307</a>

# Details

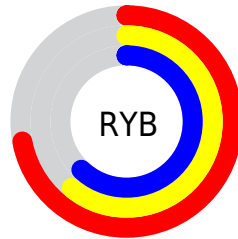
The YUV color  $164.6000, -3.2538, 17.0138$  is a light color, and the websafe version is hex  $CC9999$ . A complement of this color would be  $175.4000, 3.2538, -17.0138$ , and the grayscale version is  $165.0000, 0.0000, 0.0000$ .

A 20% lighter version of the original color is  $219.8990, -3.4012, 17.6286$ , and  $113.0020, -2.9590, 15.7842$  is the 20% darker color. If you saturate the color by 10%, you get  $152.0960, -5.4703, 27.9798$ , and if you desaturate by 10%, it is  $177.1040, -1.0373, 6.0478$ .

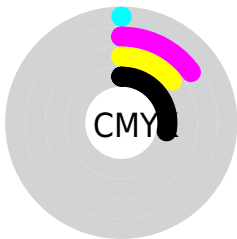
# Distribution



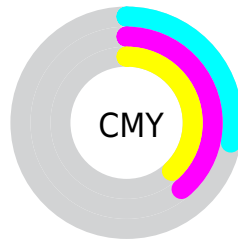
- Red (72%)
- Green (61%)
- Blue (62%)



- Red (72%)
- Yellow (61%)
- Blue (62%)



- Cyan (0%)
- Magenta (15%)
- Yellow (14%)
- Black (28%)



- Cyan (28%)
- Magenta (39%)
- Yellow (38%)

# Brightness & Saturation Gradients

These gradients show how the YUV color 164.6000, -3.2538, 17.0138 changes by changing the brightness by 10 percent. The first figure shows a shift by +10% for each color and the second figure -10%.

Similar to the brightness gradients but the following saturation gradients show a change of the YUV color 164.6000, -3.2538, 17.0138 by changing the saturation by 10% instead.



■ 164.6000, -3.2538,  
17.0138

■ 164.6000, -3.2538,  
17.0138

255.0000, 0.0000,  
0.0000

■ 138.3010, -3.1064,  
16.3990

■ 219.8990, -3.4012,  
17.6286

■ 113.0020, -2.9590,  
15.7842

■ 244.0120, -1.4849,  
9.6365

■ 88.4040, -2.6642,  
14.5547

■ 65.1050, -2.5168,  
13.9399

■ 42.5070, -2.2220,  
12.7104

■ 21.5070, -2.2220,  
12.7104

■ 0.0000, 0.0000,

0.0000

164.6000, -3.2538,  
17.0138

164.6000, -3.2538,  
17.0138

152.0960, -5.4703,  
27.9798

177.1040, -1.0373,  
6.0478

139.0050, -7.3975,  
39.4606

190.1950, 0.8899,  
-5.4330

126.5010, -9.6140,  
50.4266

202.6990, 3.1064,  
-16.3990

113.4100,  
-11.5411, 61.9074

215.7900, 5.0335,  
-27.8798

100.9060,  
-13.7577, 72.8734

228.2940, 7.2501,  
-38.8458

88.2880, -16.4110,  
83.9394

233.7710, 10.4659,  
-43.6492

■ 75.1970, -18.3381,  
95.4202

■ 62.6930, -20.5546,  
106.3862

■ 56.4980, -21.4445,  
111.8193

# Harmonies

## Analogous

The Analogous color harmony consists of three colors that are next to each other on the color wheel.



164.5440, 1.7038, 13.5549



164.6000, -3.2538, 17.0138



163.5630, -7.1796, 16.1692

# Triad

The Triadic color harmony groups three colors that are evenly spaced from another and form a triangle on the color wheel.



164.6000, -3.2538, 17.0138



160.3600, -6.0935, -5.5777



161.4420, 9.6421, -12.6656

# Complementary

The Complementary color scheme is a pair of colors which are on the opposite of each other on the color wheel.



164.6000, -3.2538, 17.0138



175.4000, 3.2538, -17.0138

# Split Complementary

Split-complementary colors differ from the complementary color scheme. The scheme consists of three colors, the original color and two neighbors of the complement color.



159.6540, 8.0586, -18.1136



164.6000, -3.2538, 17.0138



159.5700, -1.2670, -13.6549

# Square

The Square scheme is like the rectangle color scheme, but the four colors are evenly spaced on the color wheel.



164.6000, -3.2538, 17.0138



162.2040, -9.4676, 3.3291



159.5030, 3.6960, -18.8581



163.0840, 9.3256, -4.4587



# Rectangle

The Rectangle color scheme consists of four colors that form a rectangle on the color wheel.



164.6000, -3.2538, 17.0138



163.0850, -8.9159, 13.0805



159.5030, 3.6960, -18.8581



160.7190, 9.5055, -15.5396

# Sweetspot

The Sweet Spot groups the original color and five complimentary colors.



164.6000, -3.2538, 17.0138



231.7020, -1.3321, 7.2773



166.9660, 8.3978, 13.1848



115.0930, -1.0318, 4.3034



247.0000, 0.0000, 0.0000



120.0000, 0.0000, 0.0000



# Same Dimension

The Same Dimension uses a secret algorithm to generate beautiful new colors.



164.6000, -3.2538, 17.0138



210.1990, -5.0281, 26.1355



171.4160, -7.6001, 11.0362



85.6910, -1.3267, 5.5330



47.8980, -18.1907, 94.8055



8.6000, -3.2538, 17.0138



# Inverse Universe

The Inverse Universe completely reimagines the original color for something new.



164.6000, -3.2538, 17.0138



210.1990, -5.0281, 26.1355



168.5840, 7.6001, -11.0362



85.6910, -1.3267, 5.5330



47.8980, -18.1907, 94.8055



8.6000, -3.2538, 17.0138



# Previews

## White Background



This preview shows how the YUV color 164.6000, -3.2538, 17.0138 looks on a white background.

## Color Contrast Check

Large Text (above 18pt) WCAG AA × Fail

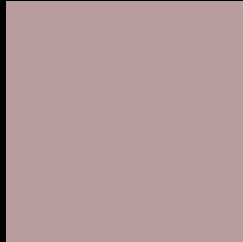
Any Text WCAG AA × Fail

Large Text (above 18pt) WCAG AAA × Fail

Any Text WCAG AAA × Fail



# Black Background



This preview shows how the YUV color 164.6000, -3.2538, 17.0138 looks on a black background.

## Color Contrast Check

Large Text (above 18pt) WCAG AA ✓ Pass

Any Text WCAG AA ✓ Pass

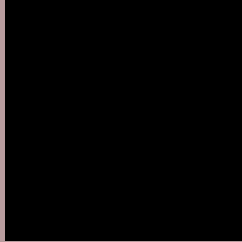
Large Text (above 18pt) WCAG AAA ✓ Pass

Any Text WCAG AAA ✓ Pass

If you want to check with other color combinations, try the [Color Contrast Checker](#).

# YUV 164.6000, -3.2538, 17.0138

## Background



This preview shows how black text looks on a background with the YUV color 164.6000, -3.2538, 17.0138.



This preview shows how white text looks on a background with the YUV color 164.6000, -3.2538,



# Color Blindness Simulation

Color vision deficiency is a very complex topic, and I could not describe the different causes any better than Wikipedia does, so if you want to learn more, you should check out their [article about color blindness](#).

## Dichromacy



### Original Color

164.6000, -3.2538, 17.0138

### Protanopia

163.0820, -1.0264, 2.5591

### Deuteranopia

163.9910, -2.9536, 14.0399



## Tritanopia

165.3380, 0.8194, 17.2436

# Trichromacy



## Original Color

164.6000, -3.2538, 17.0138

## Protanomaly

163.8870, -1.9163, 7.9921

## Deuteranomaly

164.2900, -3.1010, 14.6547

## Tritanomaly

164.9960, -0.4910, 17.5435

# Monochromacy



## Original Color

164.6000, -3.2538, 17.0138

## Achromatopsia

165.0000, 0.0000, 0.0000

## Achromatomaly

164.9900, -1.4741, 6.1478

# CSS Examples

## Text

The CSS property to change the color of the text to YUV 164.6000, -3.2538, 17.0138 is called "color". The color property can be set on classes, ids or directly on the HTML element.

This example shows how text in the color `rgb(184, 156, 158)` looks like.

```
.text, #text, p{  
    color:rgb(184, 156, 158)  
}
```

If you want to add a text shadow in that color use the text-shadow property, you can generate a text shadow directly with our [CSS Text Shadow Generator](#).

Here you see how black text with a 4 pixel rgb(184, 156, 158) colored shadow looks like.

```
.shadow{ text-shadow: 4px 4px 2px rgb(184, 156, 158) }
```

## Border

The CSS property to change the border of an element to YUV 164.6000, -3.2538, 17.0138 is called "border". The border property can be set on classes, ids or directly on the HTML element.

This example shows the color as border, it can be applied via the CSS property "border" or "border-color".

```
.border, #border, table{ border:4px solid rgb(184, 156, 158) }
```



If only the border color should be changed use the property `border-color`.

```
.border{ border-color:rgb(184, 156, 158) }
```

If you want to add a box shadow in that color use:

Here you see how a box with a 4 pixel `rgb(184, 156, 158)` colored shadow looks like.

```
.boxshadow{ -moz-box-shadow:4px 4px 4px  
4px rgb(184, 156, 158); -webkit-box-  
shadow:4px 4px 4px 4px rgb(184, 156, 158);  
box-shadow:4px 4px 4px 4px rgb(184, 156,  
158) }
```

# Background

The CSS property to change the background color of an element to YUV 164.6000, -3.2538, 17.0138 is called "background". The background property can be set on classes, ids or directly on the HTML element.

```
.background, #background, body{  
background: rgb(184, 156, 158) }
```

If only the background color should be changed can be used:

```
.background{ background-color: rgb(184,  
156, 158) }
```

This example shows the color as background, it is applied via the CSS property "background".

To optimize and compress your CSS code, you can use our [online CSS compressor and optimizer](#) based on csstidy. If you want to create a linear or radial gradient as background or border, check our [CSS Gradient Generator](#).

Hey! You found this booklet interesting? Support Converting Colors with the new Membership Option!

The pro membership hides all ads, plus gives you double the colors in the color bucket, and more awesome pro features!

**[Learn more, Memberships starting at \\$2.50/m!](#)**

**Follow me  
on Twitter!**

@ConvertingColor