

Converting Colors

YUV(164.6300, -8.6916,
34.5275)

Have a look what the booklet for
YUV(164.6300, -8.6916, 34.5275)
contains.

YUV(164.6300, -8.6916, 34.5275)	3
<i>Conversions</i>	4
<i>Details</i>	6
<i>Harmonies</i>	12
<i>Previews</i>	24
<i>Color Blindness Simulation</i>	28
<i>CSS Examples</i>	31

Color

**YUV(164.6300, -8.6916,
34.5275)**

Conversions

Conversions Part 1

Format	Color
Hex	CC9493
RGB	204, 148, 147
RGB Percent	80%, 58%, 58%
CMY	0.2000, 0.4196, 0.4235
CMYK	0.00, 0.27, 0.28, 0.20
HSL	1°, 36%, 69%
HSV	1°, 28%, 80%
XYZ	40.7582, 36.1238, 32.4282
YIQ	164.6300, 33.6970, 11.5610

Conversions

Conversions Part 2

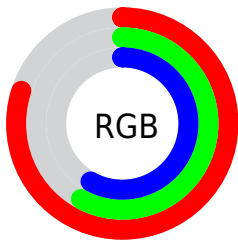
Format	Color
RYB	204, 148, 147
Decimal	13407379
CIELab	66.61, 20.95, 8.88
CIElCh	67, 22.753, 22.961
Yxy	36.1238, 0.3729, 0.3305
Android (android.graphics.Color)	4291597459 (0xFFCC9493)
YUV	164.6300, -8.6916, 34.5275
Hunter-Lab	60.1030, 15.8674, 10.0827

Details

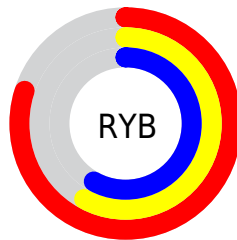
The YUV color $164.6300, -8.6916, 34.5275$ is a light color, and the websafe version is hex $CC9999$. A complement of this color would be $186.3700, 8.6916, -34.5275$, and the grayscale version is $165.0000, 0.0000, 0.0000$.

A 20% lighter version of the original color is $217.7330, -8.2494, 32.6832$, and $112.5480, -7.6652, 31.9684$ is the 20% darker color. If you saturate the color by 10%, you get $150.6100, -11.6397, 46.8230$, and if you desaturate by 10%, it is $178.6500, -5.7435, 22.2319$.

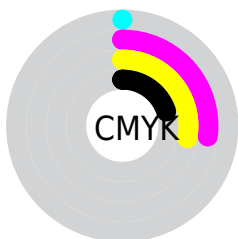
Distribution



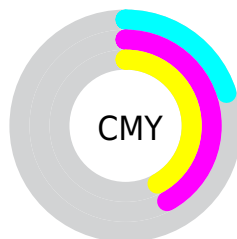
- Red (80%)
- Green (58%)
- Blue (58%)



- Red (80%)
- Yellow (58%)
- Blue (58%)



- Cyan (0%)
- Magenta (27%)
- Yellow (28%)
- Black (20%)



- Cyan (20%)
- Magenta (42%)
- Yellow (42%)

Brightness & Saturation Gradients

These gradients show how the YUV color 164.6300, -8.6916, 34.5275 changes by changing the brightness by 10 percent. The first figure shows a shift by +10% for each color and the second figure -10%.

Similar to the brightness gradients but the following saturation gradients show a change of the YUV color 164.6300, -8.6916, 34.5275 by changing the saturation by 10% instead.

■ 164.6300, -8.6916,
34.5275

■ 164.6300, -8.6916,
34.5275

255.0000, 0.0000,
0.0000

■ 138.0320, -8.3968,
33.2979

■ 217.7330, -8.2494,
32.6832

■ 112.5480, -7.6652,
31.9684

■ 237.9480, -4.4114,
14.9546

■ 87.6510, -7.2229,
30.1241

■ 63.7540, -6.7807,
28.2797

■ 40.3840, -5.6123,
26.8502

■ 17.4440, -6.6279,
25.9206

■ 4.7840, -2.3585,

9.8364

0.0000, 0.0000,
0.0000

164.6300, -8.6916,
34.5275

164.6300, -8.6916,
34.5275

150.6100,
-11.6397, 46.8230

178.6500, -5.7435,
22.2319

136.4760,
-15.0247, 59.2185

192.7840, -2.3585,
9.8364

122.4560,
-17.9728, 71.5141

206.8040, 0.5896,
-2.4591

108.3220,
-21.3577, 83.9096

220.9380, 3.9746,
-14.8546

94.3020, -24.3059,
96.2051

234.9580, 6.9227,
-27.1502

■ 80.2820, -27.2540,
108.5007

■ 239.7510, 7.5178,
-31.3536

■ 66.1480, -30.6390,
120.8962

■ 63.3440, -31.2286,
123.3553

Harmonies

Analogous

The Analogous color harmony consists of three colors that are next to each other on the color wheel.



165.8280, 1.0708, 29.9688



164.6300, -8.6916, 34.5275



162.9470, -16.2429, 29.8645

Triad

The Triadic color harmony groups three colors that are evenly spaced from another and form a triangle on the color wheel.



164.6300, -8.6916, 34.5275



156.9580, -9.8393, -17.5032



159.0520, 21.1734, -24.6016

Complementary

The Complementary color scheme is a pair of colors which are on the opposite of each other on the color wheel.



164.6300, -8.6916, 34.5275



186.3700, 8.6916, -34.5275

Split Complementary

Split-complementary colors differ from the complementary color scheme. The scheme consists of three colors, the original color and two neighbors of the complement color.



155.0840, 19.1856, -40.4157



164.6300, -8.6916, 34.5275



154.0190, 0.9766, -33.3427

Square

The Square scheme is like the rectangle color scheme, but the four colors are evenly spaced on the color wheel.



164.6300, -8.6916, 34.5275



159.7170, -17.6085, 1.1252



152.8250, 11.9183, -42.8195



163.0870, 18.1981, -3.5843

Rectangle

The Rectangle color scheme consists of four colors that form a rectangle on the color wheel.



164.6300, -8.6916, 34.5275



162.3930, -19.4207, 22.4573



152.8250, 11.9183, -42.8195



157.4210, 21.4844, -31.0642

Sweetspot

The Sweet Spot groups the original color and five complimentary colors.



164.6300, -8.6916, 34.5275



240.9800, -2.9481, 12.2955



170.4270, 16.0585, 29.4435



118.8870, -1.9163, 7.9921



0.0000, 0.0000, 0.0000



128.0000, 0.0000, 0.0000

Same Dimension

The Same Dimension uses a secret algorithm to generate beautiful new colors.



164.6300, -8.6916, 34.5275



195.1870, -13.4032, 52.4560



181.0660, -16.7945, 20.1131



94.9900, -1.4741, 6.1478



51.3950, -25.3377, 100.5086



11.9490, -5.8909, 22.8467

Inverse Universe

The Inverse Universe completely reimagines the original color for something new.



186.3700, 8.6916, -34.5275



227.8130, 13.4032, -52.4560



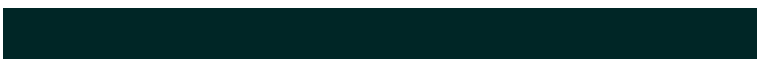
169.9340, 16.7945, -20.1131



99.0100, 1.4741, -6.1478



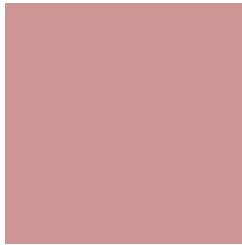
114.6050, 25.3377, -100.5086



26.6380, 5.6015, -23.3615

Previews

White Background



This preview shows how the YUV color 164.6300, -8.6916, 34.5275 looks on a white background.

Color Contrast Check

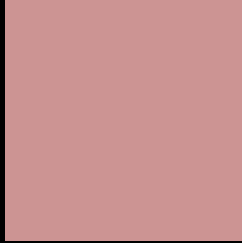
Large Text (above 18pt) WCAG AA × Fail

Any Text WCAG AA × Fail

Large Text (above 18pt) WCAG AAA × Fail

Any Text WCAG AAA × Fail

Black Background



This preview shows how the YUV color 164.6300, -8.6916, 34.5275 looks on a black background.

Color Contrast Check

Large Text (above 18pt) WCAG AA ✓ Pass

Any Text WCAG AA ✓ Pass

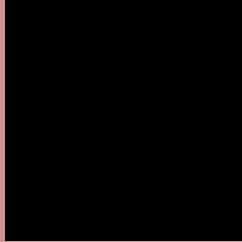
Large Text (above 18pt) WCAG AAA ✓ Pass

Any Text WCAG AAA ✓ Pass

If you want to check with other color combinations, try the [Color Contrast Checker](#).

YUV 164.6300, -8.6916, 34.5275

Background



This preview shows how black text looks on a background with the YUV color 164.6300, -8.6916, 34.5275.



This preview shows how white text looks on a background with the YUV color 164.6300, -8.6916,

34.5275.

Color Blindness Simulation

Color vision deficiency is a very complex topic, and I could not describe the different causes any better than Wikipedia does, so if you want to learn more, you should check out their [article about color blindness](#).

Dichromacy



Original Color

164.6300, -8.6916, 34.5275

Protanopia

162.5830, -4.2314, 3.8737

Deuteranopia

163.1180, -8.9322, 18.3135



Tritanopia

165.0090, -3.4554, 35.0721

Trichromacy



Original Color

164.6300, -8.6916, 34.5275

Protanomaly

163.1930, -6.0111, 14.7397

Deuteranomaly

163.5640, -8.6591, 24.0614

Tritanomaly

165.1400, -5.4920, 34.9572

Monochromacy



Original Color

164.6300, -8.6916, 34.5275

Achromatopsia

165.0000, 0.0000, 0.0000

Achromatomaly

164.8660, -3.3849, 12.3955

CSS Examples

Text

The CSS property to change the color of the text to YUV 164.6300, -8.6916, 34.5275 is called "color". The color property can be set on classes, ids or directly on the HTML element.

This example shows how text in the color `rgb(204, 148, 147)` looks like.

```
.text, #text, p{  
    color:rgb(204, 148, 147)  
}
```

If you want to add a text shadow in that color use the text-shadow property, you can generate a text shadow directly with our [CSS Text Shadow Generator](#).

Here you see how black text with a 4 pixel rgb(204, 148, 147) colored shadow looks like.

```
.shadow{ text-shadow: 4px 4px 2px rgb(204, 148, 147) }
```

Border

The CSS property to change the border of an element to YUV 164.6300, -8.6916, 34.5275 is called "border". The border property can be set on classes, ids or directly on the HTML element.

This example shows the color as border, it can be applied via the CSS property "border" or "border-color".

```
.border, #border, table{ border:4px solid rgb(204, 148, 147) }
```


If only the border color should be changed use the property `border-color`.

```
.border{ border-color:rgb(204, 148, 147) }
```

If you want to add a box shadow in that color use:

Here you see how a box with a 4 pixel `rgb(204, 148, 147)` colored shadow looks like.

```
.boxshadow{ -moz-box-shadow:4px 4px 4px  
4px rgb(204, 148, 147); -webkit-box-  
shadow:4px 4px 4px 4px rgb(204, 148, 147);  
box-shadow:4px 4px 4px 4px rgb(204, 148,  
147) }
```

Background

The CSS property to change the background color of an element to YUV 164.6300, -8.6916, 34.5275 is called "background". The background property can be set on classes, ids or directly on the HTML element.

```
.background, #background, body{  
background: rgb(204, 148, 147) }
```

If only the background color should be changed can be used:

```
.background{ background-color: rgb(204,  
148, 147) }
```

This example shows the color as background, it is applied via the CSS property "background".

To optimize and compress your CSS code, you can use our [online CSS compressor and optimizer](#) based on csstidy. If you want to create a linear or radial gradient as background or border, check our [CSS Gradient Generator](#).

Hey! You found this booklet interesting? Support Converting Colors with the new Membership Option!

The pro membership hides all ads, plus gives you double the colors in the color bucket, and more awesome pro features!

[Learn more, Memberships starting at \\$2.50/m!](#)

**Follow me
on Twitter!**

@ConvertingColor