

Converting Colors

YUV(164.6490, -21.0260,
23.9868)

Have a look what the booklet for
YUV(164.6490, -21.0260, 23.9868)
contains.

YUV(164.6490, -21.0260, 23.9868)	3
<i>Conversions</i>	4
<i>Details</i>	6
<i>Harmonies</i>	12
<i>Previews</i>	24
<i>Color Blindness Simulation</i>	28
<i>CSS Examples</i>	31

Color

**YUV(164.6490, -21.0260,
23.9868)**

Conversions

Conversions Part 1

Format	Color
Hex	C09F7A
RGB	192, 159, 122
RGB Percent	75%, 62%, 48%
CMY	0.2471, 0.3765, 0.5216
CMYK	0.00, 0.17, 0.36, 0.25
HSL	32°, 36%, 62%
HSV	32°, 36%, 75%
XYZ	37.6492, 37.4079, 23.6485
YIQ	164.6490, 31.5450, -4.5110

Conversions

Conversions Part 2

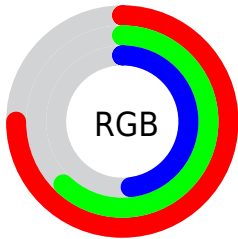
Format	Color
RYB	184, 192, 122
Decimal	12623738
CIELab	67.58, 6.94, 23.89
CIElCh	68, 24.874, 73.802
Yxy	37.4079, 0.3814, 0.3790
Android (android.graphics.Color)	4290813818 (0xFFC09F7A)
YUV	164.6490, -21.0260, 23.9868
Hunter-Lab	61.1620, 2.8450, 19.8887

Details

The YUV color **164.6490, -21.0260, 23.9868** is a light color, and the websafe version is hex **CC9966**. A complement of this color would be **149.3510, 21.0260, -23.9868**, and the grayscale version is **165.0000, 0.0000, 0.0000**.

A 20% lighter version of the original color is **220.0190, -22.1944, 25.4163**, and **112.6810, -19.5627, 21.3278** is the 20% darker color. If you saturate the color by 10%, you get **157.2000, -26.7206, 30.5196**, and if you desaturate by 10%, it is **172.0980, -15.3313, 17.4541**.

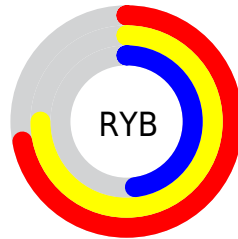
Distribution



Red (75%)

Green (62%)

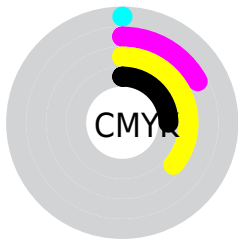
Blue (48%)



Red (72%)

Yellow (75%)

Blue (48%)

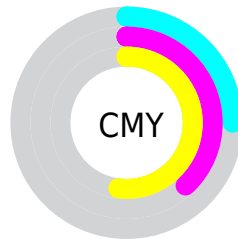


Cyan (0%)

Magenta (17%)

Yellow (36%)

Black (25%)



Cyan (25%)

Magenta (38%)

Yellow (52%)

Brightness & Saturation Gradients

These gradients show how the YUV color 164.6490, -21.0260, 23.9868 changes by changing the brightness by 10 percent. The first figure shows a shift by +10% for each color and the second figure -10%.

Similar to the brightness gradients but the following saturation gradients show a change of the YUV color 164.6490, -21.0260, 23.9868 by changing the saturation by 10% instead.

■ 164.6490,
-21.0260, 23.9868

■ 164.6490,
-21.0260, 23.9868

255.0000, 0.0000,
0.0000

■ 138.1650,
-20.2943, 22.6573

■ 220.0190,
-22.1944, 25.4163

■ 112.6810,
-19.5627, 21.3278

■ 241.3270,
-19.3882, 11.9912

■ 87.6100, -18.5417,
20.5130

■ 252.1500,
-10.9200, 2.4994

■ 63.8270, -17.6627,
18.5687

■ 41.5880, -18.5309,
17.0243

■ 22.2160, -10.9525,
12.9656

■ 0.0000, 0.0000,

0.0000

■ 164.6490,
-21.0260, 23.9868

■ 164.6490,
-21.0260, 23.9868

■ 157.2000,
-26.7206, 30.5196

■ 172.0980,
-15.3313, 17.4541

■ 149.7510,
-32.4152, 37.0524

■ 179.5470, -9.6367,
10.9213

■ 142.1880,
-38.5467, 43.6851

■ 187.1100, -3.5052,
4.2885

■ 134.7390,
-44.2413, 50.2179

■ 194.5590, 2.1894,
-2.2442

■ 127.2900,
-49.9360, 56.7507

■ 202.0080, 7.8841,
-8.7770

■ 119.8410,
-55.6306, 63.2834

■ 209.4570, 13.5787,
-15.3098

■ 116.6950,
-57.5306, 66.0425

■ 216.7920, 18.8365,
-21.7426

■ 222.0750, 16.2320,
-26.3758

■ 227.3580, 13.6275,
-31.0090

Harmonies

Analogous

The Analogous color harmony consists of three colors that are next to each other on the color wheel.



166.2080, -15.3855, 34.8976



164.6490, -21.0260, 23.9868



162.0660, -20.2455, 6.9581

Triad

The Triadic color harmony groups three colors that are evenly spaced from another and form a triangle on the color wheel.



164.6490, -21.0260, 23.9868



153.9340, 9.8925, -46.4231



167.5620, 14.5129, 11.7851

Complementary

The Complementary color scheme is a pair of colors which are on the opposite of each other on the color wheel.



164.6490, -21.0260, 23.9868



149.3510, 21.0260, -23.9868

Split Complementary

Split-complementary colors differ from the complementary color scheme. The scheme consists of three colors, the original color and two neighbors of the complement color.



164.8410, 21.2774, -11.2616



164.6490, -21.0260, 23.9868



154.8550, 19.7915, -48.1078

Square

The Square scheme is like the rectangle color scheme, but the four colors are evenly spaced on the color wheel.



164.6490, -21.0260, 23.9868



156.4060, -2.6652, -31.9281



159.5670, 23.3845, -33.8233



168.7400, 4.5652, 29.1690

Rectangle

The Rectangle color scheme consists of four colors that form a rectangle on the color wheel.



164.6490, -21.0260, 23.9868



160.9010, -16.7132, -6.0522



159.5670, 23.3845, -33.8233



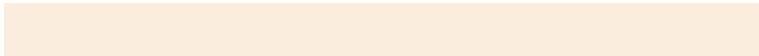
167.2020, 17.1554, 4.2078

Sweetspot

The Sweet Spot groups the original color and five complimentary colors.



164.6490, -21.0260, 23.9868



239.1770, -8.4683, 9.4918



146.8060, 4.5326, 39.6351



118.4800, -4.6736, 5.7180



252.0000, 0.0000, 0.0000



125.0000, 0.0000, 0.0000

Same Dimension

The Same Dimension uses a secret algorithm to generate beautiful new colors.



164.6490, -21.0260, 23.9868



206.9360, -32.9994, 37.7671



183.7210, -30.4285, 6.3837



92.9250, -2.9210, 3.5738



98.0340, -48.3308, 55.2212



20.4330, -10.0735, 11.0213

Inverse Universe

The Inverse Universe completely reimagines the original color for something new.



149.3510, 21.0260, -23.9868



183.0640, 32.9994, -37.7671



130.2790, 30.4285, -6.3837



91.0750, 2.9210, -3.5738



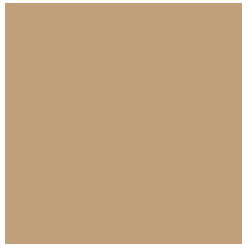
62.9660, 48.3308, -55.2212



13.1540, 9.7841, -11.5361

Previews

White Background



This preview shows how the YUV color 164.6490, -21.0260, 23.9868 looks on a white background.

Color Contrast Check

Large Text (above 18pt) WCAG AA × Fail

Any Text WCAG AA × Fail

Large Text (above 18pt) WCAG AAA × Fail

Any Text WCAG AAA × Fail

Black Background



This preview shows how the YUV color 164.6490, -21.0260, 23.9868 looks on a black background.

Color Contrast Check

Large Text (above 18pt) WCAG AA ✓ Pass

Any Text WCAG AA ✓ Pass

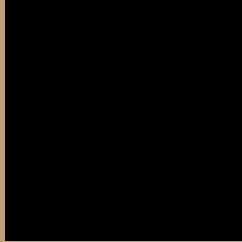
Large Text (above 18pt) WCAG AAA ✓ Pass

Any Text WCAG AAA ✓ Pass

If you want to check with other color combinations, try the [Color Contrast Checker](#).

YUV 164.6490, -21.0260, 23.9868

Background



This preview shows how black text looks on a background with the YUV color 164.6490, -21.0260, 23.9868.



This preview shows how white text looks on a background with the YUV color 164.6490, -21.0260, 23.9868.

Color Blindness Simulation

Color vision deficiency is a very complex topic, and I could not describe the different causes any better than Wikipedia does, so if you want to learn more, you should check out their [article about color blindness](#).

Dichromacy



Original Color

164.6490, -21.0260, 23.9868

Protanopia

163.6150, -19.5302, 10.8616

Deuteranopia

164.9590, -21.1788, 26.3460



Tritanopia

167.5240, -1.2443, 25.8505

Trichromacy



Original Color

164.6490, -21.0260, 23.9868

Protanomaly

164.1210, -20.2727, 15.6799

Deuteranomaly

164.6600, -21.0314, 25.7312

Tritanomaly

166.2760, -8.5171, 25.1909

Monochromacy



Original Color

164.6490, -21.0260, 23.9868

Achromatopsia

165.0000, 0.0000, 0.0000

Achromatomaly

164.9920, -7.8841, 8.7770

CSS Examples

Text

The CSS property to change the color of the text to YUV 164.6490, -21.0260, 23.9868 is called "color". The color property can be set on classes, ids or directly on the HTML element.

This example shows how text in the color `rgb(192, 159, 122)` looks like.

```
.text, #text, p{  
    color:rgb(192, 159, 122)  
}
```

If you want to add a text shadow in that color use the text-shadow property, you can generate a text shadow directly with our [CSS Text Shadow Generator](#).

Here you see how black text with a 4 pixel rgb(192, 159, 122) colored shadow looks like.

```
.shadow{ text-shadow: 4px 4px 2px rgb(192, 159, 122) }
```

Border

The CSS property to change the border of an element to YUV 164.6490, -21.0260, 23.9868 is called "border".

The border property can be set on classes, ids or directly on the HTML element.

This example shows the color as border, it can be applied via the CSS property "border" or "border-color".

```
.border, #border, table{ border:4px solid rgb(192, 159, 122) }
```


If only the border color should be changed use the property `border-color`.

```
.border{ border-color:rgb(192, 159, 122) }
```

If you want to add a box shadow in that color use:

Here you see how a box with a 4 pixel `rgb(192, 159, 122)` colored shadow looks like.

```
.boxshadow{ -moz-box-shadow:4px 4px 4px  
4px rgb(192, 159, 122); -webkit-box-  
shadow:4px 4px 4px 4px rgb(192, 159, 122);  
box-shadow:4px 4px 4px 4px rgb(192, 159,  
122) }
```

Background

The CSS property to change the background color of an element to YUV 164.6490, -21.0260, 23.9868 is called "background". The background property can be set on classes, ids or directly on the HTML element.

```
.background, #background, body{  
background: rgb(192, 159, 122) }
```

If only the background color should be changed can be used:

```
.background{ background-color: rgb(192,  
159, 122) }
```

This example shows the color as background, it is applied via the CSS property "background".

To optimize and compress your CSS code, you can use our [online CSS compressor and optimizer](#) based on csstidy. If you want to create a linear or radial gradient as background or border, check our [CSS Gradient Generator](#).

Hey! You found this booklet interesting? Support Converting Colors with the new Membership Option!

The pro membership hides all ads, plus gives you double the colors in the color bucket, and more awesome pro features!

[Learn more, Memberships starting at \\$2.50/m!](#)

**Follow me
on Twitter!**

@ConvertingColor