

Converting Colors

YUV(164.7640, -5.3067,
22.1320)

Have a look what the booklet for
YUV(164.7640, -5.3067, 22.1320)
contains.

YUV(164.7640, -5.3067, 22.1320)	3
<i>Conversions</i>	4
<i>Details</i>	6
<i>Harmonies</i>	12
<i>Previews</i>	24
<i>Color Blindness Simulation</i>	28
<i>CSS Examples</i>	31

Color

**YUV(164.7640, -5.3067,
22.1320)**

Conversions

Conversions Part 1

Format	Color
Hex	BE9A9A
RGB	190, 154, 154
RGB Percent	75%, 60%, 60%
CMY	0.2549, 0.3961, 0.3961
CMYK	0.00, 0.19, 0.19, 0.25
HSL	0°, 22%, 67%
HSV	0°, 19%, 75%
XYZ	38.6235, 36.3914, 35.5604
YIQ	164.7640, 21.4560, 7.6320

Conversions

Conversions Part 2

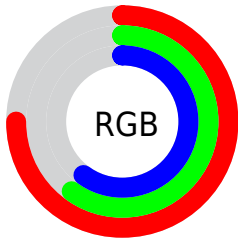
Format	Color
RYB	190, 154, 154
Decimal	12491418
CIELab	66.82, 13.37, 5.06
CIELCh	67, 14.297, 20.720
Yxy	36.3914, 0.3493, 0.3291
Android (android.graphics.Color)	4290681498 (0xFFBE9A9A)
YUV	164.7640, -5.3067, 22.1320
Hunter-Lab	60.3253, 8.7161, 7.2776

Details

The YUV color $164.7640, -5.3067, 22.1320$ is a light color, and the websafe version is hex $CC9999$. A complement of this color would be $179.2360, 5.3067, -22.1320$, and the grayscale version is $165.0000, 0.0000, 0.0000$.

A 20% lighter version of the original color is $219.6610, -5.7489, 23.9763$, and $112.8670, -4.8644, 20.2876$ is the 20% darker color. If you saturate the color by 10%, you get $151.4450, -8.1074, 33.8127$, and if you desaturate by 10%, it is $178.0830, -2.5059, 10.4512$.

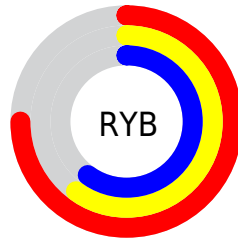
Distribution



Red (75%)

Green (60%)

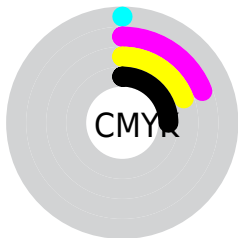
Blue (60%)



Red (75%)

Yellow (60%)

Blue (60%)

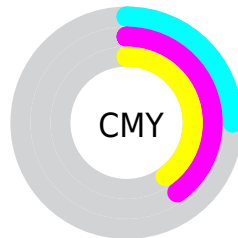


Cyan (0%)

Magenta (19%)

Yellow (19%)

Black (25%)



Cyan (25%)


Magenta (40%)


Yellow (40%)

Brightness & Saturation Gradients


These gradients show how the YUV color 164.7640, -5.3067, 22.1320 changes by changing the brightness by 10 percent. The first figure shows a shift by +10% for each color and the second figure -10%.


Similar to the brightness gradients but the following saturation gradients show a change of the YUV color 164.7640, -5.3067, 22.1320 by changing the saturation by 10% instead.

 164.7640, -5.3067,
22.1320

 164.7640, -5.3067,
22.1320


255.0000, 0.0000,
0.0000


 138.4650, -5.1592,
21.5172


 219.6610, -5.7489,
23.9763


 112.8670, -4.8644,
20.2876

 242.3820, -2.6533,
11.0660

 88.2690, -4.5696,
19.0581

 64.6710, -4.2748,
17.8285

 42.1870, -3.5432,
16.4990

 20.7740, -3.8326,
15.9842

 0.0000, 0.0000,

0.0000

■ 164.7640, -5.3067,
22.1320

■ 164.7640, -5.3067,
22.1320

■ 151.4450, -8.1074,
33.8127

■ 178.0830, -2.5059,
10.4512

■ 138.1260,
-10.9081, 45.4935

■ 191.4020, 0.2948,
-1.2296

■ 124.8070,
-13.7089, 57.1743

■ 204.7210, 3.0955,
-12.9103

■ 111.4880,
-16.5096, 68.8550

■ 218.0400, 5.8963,
-24.5911

■ 98.1690, -19.3103,
80.5358

■ 231.3590, 8.6970,
-36.2718

■ 84.8500, -22.1110,
92.2166

■ 235.5650, 9.5815,
-39.9605

■ 71.5310, -24.9118,
103.8973

■ 58.2120, -27.7125,
115.5781

■ 56.8100, -28.0073,
116.8076

Harmonies

Analogous

The Analogous color harmony consists of three colors that are next to each other on the color wheel.



165.0500, 0.9613, 18.3731



164.7640, -5.3067, 22.1320



163.4880, -10.1006, 19.7430

Triad

The Triadic color harmony groups three colors that are evenly spaced from another and form a triangle on the color wheel.



164.7640, -5.3067, 22.1320



159.5120, -6.6614, -10.0960



161.3430, 13.1419, -15.2098

Complementary

The Complementary color scheme is a pair of colors which are on the opposite of each other on the color wheel.



164.7640, -5.3067, 22.1320



179.2360, 5.3067, -22.1320

Split Complementary

Split-complementary colors differ from the complementary color scheme. The scheme consists of three colors, the original color and two neighbors of the complement color.



158.8320, 11.4218, -23.5317



164.7640, -5.3067, 22.1320



158.4660, -0.2297, -19.7027

Square

The Square scheme is like the rectangle color scheme, but the four colors are evenly spaced on the color wheel.



164.7640, -5.3067, 22.1320



161.3240, -11.4987, 1.4699



157.8550, 6.4805, -25.3058



163.5510, 11.0674, -3.1142

Rectangle

The Rectangle color scheme consists of four colors that form a rectangle on the color wheel.



164.7640, -5.3067, 22.1320



163.2980, -11.9789, 15.5247



157.8550, 6.4805, -25.3058



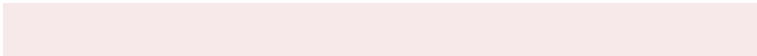
160.2070, 12.7159, -18.5985

Sweetspot

The Sweet Spot groups the original color and five complimentary colors.



164.7640, -5.3067, 22.1320



237.1860, -2.0637, 8.6069



168.8680, 10.4181, 18.5328



118.6910, -1.3267, 5.5330



252.0000, 0.0000, 0.0000



125.0000, 0.0000, 0.0000

Same Dimension

The Same Dimension uses a secret algorithm to generate beautiful new colors.



164.7640, -5.3067, 22.1320



207.0430, -8.4022, 35.0423



175.3300, -10.5157, 12.8656



87.6910, -1.3267, 5.5330



47.2420, -23.2903, 97.1348



9.2690, -4.5696, 19.0581

Inverse Universe

The Inverse Universe completely reimagines the original color for something new.



179.2360, 5.3067, -22.1320



229.9570, 8.4022, -35.0423



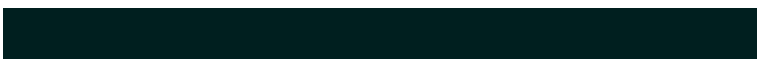
168.6700, 10.5157, -12.8656



91.3090, 1.3267, -5.5330



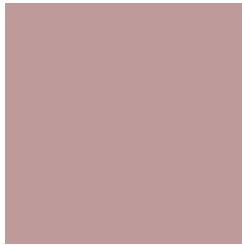
110.7580, 23.2903, -97.1348



21.7310, 4.5696, -19.0581

Previews

White Background



This preview shows how the YUV color 164.7640, -5.3067, 22.1320 looks on a white background.

Color Contrast Check

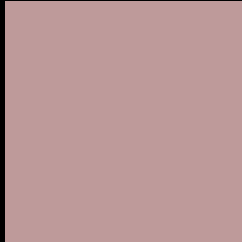
Large Text (above 18pt) WCAG AA × Fail

Any Text WCAG AA × Fail

Large Text (above 18pt) WCAG AAA × Fail

Any Text WCAG AAA × Fail

Black Background



This preview shows how the YUV color 164.7640, -5.3067, 22.1320 looks on a black background.

Color Contrast Check

Large Text (above 18pt) WCAG AA ✓ Pass

Any Text WCAG AA ✓ Pass

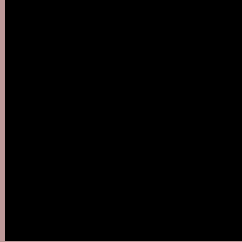
Large Text (above 18pt) WCAG AAA ✓ Pass

Any Text WCAG AAA ✓ Pass

If you want to check with other color combinations, try the [Color Contrast Checker](#).

YUV 164.7640, -5.3067, 22.1320

Background



This preview shows how black text looks on a background with the YUV color 164.7640, -5.3067, 22.1320.



This preview shows how white text looks on a background with the YUV color 164.7640, -5.3067,

Color Blindness Simulation

Color vision deficiency is a very complex topic, and I could not describe the different causes any better than Wikipedia does, so if you want to learn more, you should check out their [article about color blindness](#).

Dichromacy



Original Color

164.7640, -5.3067, 22.1320

Protanopia

163.0390, -2.4842, 3.4738

Deuteranopia

164.0190, -5.4324, 15.7693



Tritanopia

165.0290, -0.5073, 22.7766

Trichromacy



Original Color

164.7640, -5.3067, 22.1320

Protanomaly

163.5560, -3.2321, 10.0364

Deuteranomaly

164.3290, -5.5852, 18.1285

Tritanomaly

165.1600, -2.5439, 22.6617

Monochromacy



Original Color

164.7640, -5.3067, 22.1320

Achromatopsia

165.0000, 0.0000, 0.0000

Achromatomaly

164.8870, -1.9163, 7.9921

CSS Examples

Text

The CSS property to change the color of the text to YUV 164.7640, -5.3067, 22.1320 is called "color". The color property can be set on classes, ids or directly on the HTML element.

This example shows how text in the color `rgb(190, 154, 154)` looks like.

```
.text, #text, p{  
    color:rgb(190, 154, 154)  
}
```

If you want to add a text shadow in that color use the text-shadow property, you can generate a text shadow directly with our [CSS Text Shadow Generator](#).

Here you see how black text with a 4 pixel rgb(190, 154, 154) colored shadow looks like.

```
.shadow{ text-shadow: 4px 4px 2px rgb(190, 154, 154) }
```

Border

The CSS property to change the border of an element to YUV 164.7640, -5.3067, 22.1320 is called "border". The border property can be set on classes, ids or directly on the HTML element.

This example shows the color as border, it can be applied via the CSS property "border" or "border-color".

```
.border, #border, table{ border:4px solid rgb(190, 154, 154) }
```


If only the border color should be changed use the property border-color.

```
.border{ border-color:rgb(190, 154, 154) }
```

If you want to add a box shadow in that color use:

Here you see how a box with a 4 pixel rgb(190, 154, 154) colored shadow looks like.

```
.boxshadow{ -moz-box-shadow:4px 4px 4px  
4px rgb(190, 154, 154); -webkit-box-  
shadow:4px 4px 4px 4px rgb(190, 154, 154);  
box-shadow:4px 4px 4px 4px rgb(190, 154,  
154) }
```

Background

The CSS property to change the background color of an element to YUV 164.7640, -5.3067, 22.1320 is called "background". The background property can be set on classes, ids or directly on the HTML element.

```
.background, #background, body{  
background: rgb(190, 154, 154) }
```

If only the background color should be changed can be used:

```
.background{ background-color: rgb(190,  
154, 154) }
```

This example shows the color as background, it is applied via the CSS property "background".

To optimize and compress your CSS code, you can use our [online CSS compressor and optimizer](#) based on csstidy. If you want to create a linear or radial gradient as background or border, check our [CSS Gradient Generator](#).

Hey! You found this booklet interesting? Support Converting Colors with the new Membership Option!

The pro membership hides all ads, plus gives you double the colors in the color bucket, and more awesome pro features!

[Learn more, Memberships starting at \\$2.50/m!](#)

**Follow me
on Twitter!**

@ConvertingColor