

Converting Colors

YUV(164.7780, -16.6526,
21.2427)

Have a look what the booklet for
YUV(164.7780, -16.6526, 21.2427)
contains.

YUV(164.7780, -16.6526, 21.2427)	3
<i>Conversions</i>	4
<i>Details</i>	6
<i>Harmonies</i>	12
<i>Previews</i>	24
<i>Color Blindness Simulation</i>	28
<i>CSS Examples</i>	31

Color

**YUV(164.7780, -16.6526,
21.2427)**

Conversions

Conversions Part 1

Format	Color
Hex	BD9F83
RGB	189, 159, 131
RGB Percent	74%, 62%, 51%
CMY	0.2588, 0.3765, 0.4863
CMYK	0.00, 0.16, 0.31, 0.26
HSL	29°, 31%, 63%
HSV	29°, 31%, 74%
XYZ	37.4811, 37.2538, 26.6880
YIQ	164.7780, 26.8680, -2.3480

Conversions

Conversions Part 2

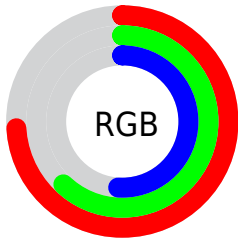
Format	Color
RYB	189, 185, 131
Decimal	12427139
CIELab	67.47, 6.89, 18.74
CIElCh	67, 19.969, 69.826
Yxy	37.2538, 0.3696, 0.3673
Android (android.graphics.Color)	4290617219 (0xFFBD9F83)
YUV	164.7780, -16.6526, 21.2427
Hunter-Lab	61.0359, 2.8011, 16.8005

Details

The YUV color **164.7780, -16.6526, 21.2427** is a light color, and the websafe version is hex **CC9966**. A complement of this color would be **155.2220, 16.6526, -21.2427**, and the grayscale version is **165.0000, 0.0000, 0.0000**.

A 20% lighter version of the original color is **220.1480, -17.8210, 22.6722**, and **112.9950, -15.7735, 19.2984** is the 20% darker color. If you saturate the color by 10%, you get **156.7420, -22.0578, 28.2903**, and if you desaturate by 10%, it is **172.8140, -11.2473, 14.1951**.

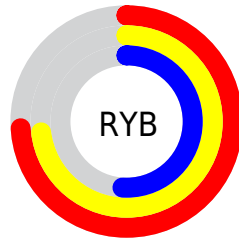
Distribution



Red (74%)

Green (62%)

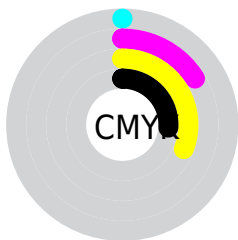
Blue (51%)



Red (74%)

Yellow (73%)

Blue (51%)

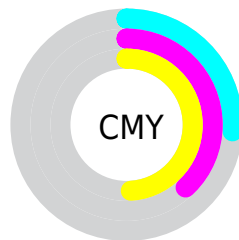


Cyan (0%)

Magenta (16%)

Yellow (31%)

Black (26%)



Cyan (26%)

Magenta (38%)

Yellow (49%)

Brightness & Saturation Gradients

These gradients show how the YUV color 164.7780, -16.6526, 21.2427 changes by changing the brightness by 10 percent. The first figure shows a shift by +10% for each color and the second figure -10%.

Similar to the brightness gradients but the following saturation gradients show a change of the YUV color 164.7780, -16.6526, 21.2427 by changing the saturation by 10% instead.

■ 164.7780,
-16.6526, 21.2427

■ 164.7780,
-16.6526, 21.2427

255.0000, 0.0000,
0.0000

■ 138.2940,
-15.9209, 19.9132

■ 220.1480,
-17.8210, 22.6722

■ 112.9950,
-15.7735, 19.2984

■ 242.4670,
-15.0202, 10.9914

■ 87.9240, -14.7525,
18.4837

■ 253.2900, -6.5520,
1.4997

■ 64.4400, -14.0209,
17.1541

■ 42.2440, -13.4313,
14.6950

■ 21.6290, -10.6631,
13.4804

■ 0.0000, 0.0000,

0.0000

■ 164.7780,
-16.6526, 21.2427

■ 164.7780,
-16.6526, 21.2427

■ 156.7420,
-22.0578, 28.2903

■ 172.8140,
-11.2473, 14.1951

■ 148.7060,
-27.4631, 35.3378

■ 180.8500, -5.8420,
7.1476

■ 141.2570,
-33.1577, 41.8706

■ 188.2990, -0.1474,
0.6148

■ 133.2210,
-38.5630, 48.9182

■ 196.3350, 5.2578,
-6.4328

■ 125.1850,
-43.9682, 55.9658

■ 204.3710, 10.6631,
-13.4804

■ 117.2630,
-48.9367, 62.9133

■ 212.2930, 15.6316,
-20.4280

■ 109.9280,
-54.1945, 69.3461

■ 218.8300, 17.8318,
-26.1609

■ 224.7000, 14.9379,
-31.3089

■ 230.5700, 12.0440,
-36.4569

Harmonies

Analogous

The Analogous color harmony consists of three colors that are next to each other on the color wheel.



166.3860, -12.0223, 29.4795



164.7780, -16.6526, 21.2427



162.9890, -16.7566, 7.9026

Triad

The Triadic color harmony groups three colors that are evenly spaced from another and form a triangle on the color wheel.



164.7780, -16.6526, 21.2427



157.3870, 6.2182, -34.5424



166.9590, 12.3452, 7.0520

Complementary

The Complementary color scheme is a pair of colors which are on the opposite of each other on the color wheel.



164.7780, -16.6526, 21.2427



155.2220, 16.6526, -21.2427

Split Complementary

Split-complementary colors differ from the complementary color scheme. The scheme consists of three colors, the original color and two neighbors of the complement color.



164.1030, 17.2042, -11.4913



164.7780, -16.6526, 21.2427



157.5530, 14.5174, -36.4420

Square

The Square scheme is like the rectangle color scheme, but the four colors are evenly spaced on the color wheel.



164.7780, -16.6526, 21.2427



158.8200, -3.8553, -23.5211



160.9330, 18.2740, -28.0052



167.6960, 4.5869, 22.1916

Rectangle

The Rectangle color scheme consists of four colors that form a rectangle on the color wheel.



164.7780, -16.6526, 21.2427



161.9060, -14.2507, -2.5486



160.9330, 18.2740, -28.0052



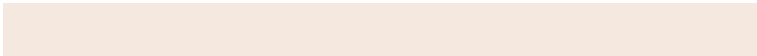
166.0830, 14.2561, 0.8042

Sweetspot

The Sweet Spot groups the original color and five complimentary colors.



164.7780, -16.6526, 21.2427



235.4480, -6.1369, 8.3771



151.8760, 4.9911, 32.5577



116.4090, -3.6526, 4.9033



250.0000, 0.0000, 0.0000



122.0000, 0.0000, 0.0000

Same Dimension

The Same Dimension uses a secret algorithm to generate beautiful new colors.



164.7780, -16.6526, 21.2427



207.0370, -26.1472, 33.2936



181.2140, -24.7555, 6.8283



90.0390, -2.4842, 3.4738



91.8540, -45.2840, 58.0100



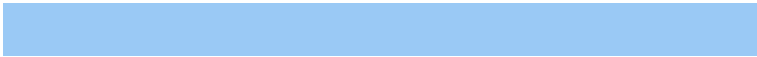
18.0740, -8.9105, 11.3361

Inverse Universe

The Inverse Universe completely reimagines the original color for something new.



155.2220, 16.6526, -21.2427



191.9630, 26.1472, -33.2936



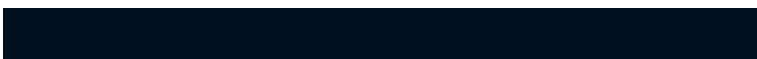
138.7860, 24.7555, -6.8283



88.9610, 2.4842, -3.4738



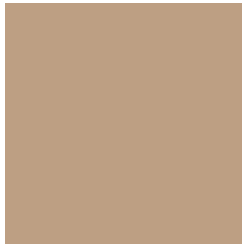
66.1460, 45.2840, -58.0100



12.9260, 8.9105, -11.3361

Previews

White Background



This preview shows how the YUV color 164.7780, -16.6526, 21.2427 looks on a white background.

Color Contrast Check

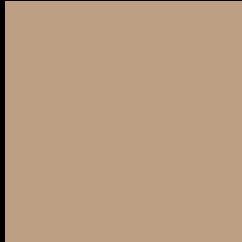
Large Text (above 18pt) WCAG AA × Fail

Any Text WCAG AA × Fail

Large Text (above 18pt) WCAG AAA × Fail

Any Text WCAG AAA × Fail

Black Background



This preview shows how the YUV color 164.7780, -16.6526, 21.2427 looks on a black background.

Color Contrast Check

Large Text (above 18pt) WCAG AA ✓ Pass

Any Text WCAG AA ✓ Pass

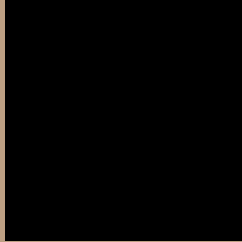
Large Text (above 18pt) WCAG AAA ✓ Pass

Any Text WCAG AAA ✓ Pass

If you want to check with other color combinations, try the [Color Contrast Checker](#).

YUV 164.7780, -16.6526, 21.2427

Background



This preview shows how black text looks on a background with the YUV color 164.7780, -16.6526, 21.2427.



This preview shows how white text looks on a background with the YUV color 164.7780, -16.6526, 21.2427.

Color Blindness Simulation

Color vision deficiency is a very complex topic, and I could not describe the different causes any better than Wikipedia does, so if you want to learn more, you should check out their [article about color blindness](#).

Dichromacy



Original Color

164.7780, -16.6526, 21.2427

Protanopia

163.4560, -15.0148, 9.2471

Deuteranopia

165.0880, -16.8054, 23.6018



Tritanopia

167.0290, -0.5073, 22.7766

Trichromacy



Original Color

164.7780, -16.6526, 21.2427

Protanomaly

163.6630, -15.6099, 13.4505

Deuteranomaly

164.7890, -16.6580, 22.9870

Tritanomaly

166.4220, -6.6170, 22.4319

Monochromacy



Original Color

164.7780, -16.6526, 21.2427

Achromatopsia

165.0000, 0.0000, 0.0000

Achromatomaly

165.1490, -5.9895, 7.7623

CSS Examples

Text

The CSS property to change the color of the text to YUV 164.7780, -16.6526, 21.2427 is called "color". The color property can be set on classes, ids or directly on the HTML element.

This example shows how text in the color `rgb(189, 159, 131)` looks like.

```
.text, #text, p{  
    color:rgb(189, 159, 131)  
}
```

If you want to add a text shadow in that color use the text-shadow property, you can generate a text shadow directly with our [CSS Text Shadow Generator](#).

Here you see how black text with a 4 pixel rgb(189, 159, 131) colored shadow looks like.

```
.shadow{ text-shadow: 4px 4px 2px rgb(189, 159, 131) }
```

Border

The CSS property to change the border of an element to YUV 164.7780, -16.6526, 21.2427 is called "border".

The border property can be set on classes, ids or directly on the HTML element.

This example shows the color as border, it can be applied via the CSS property "border" or "border-color".

```
.border, #border, table{ border:4px solid rgb(189, 159, 131) }
```


If only the border color should be changed use the property `border-color`.

```
.border{ border-color:rgb(189, 159, 131) }
```

If you want to add a box shadow in that color use:

Here you see how a box with a 4 pixel `rgb(189, 159, 131)` colored shadow looks like.

```
.boxshadow{ -moz-box-shadow:4px 4px 4px  
4px rgb(189, 159, 131); -webkit-box-  
shadow:4px 4px 4px 4px rgb(189, 159, 131);  
box-shadow:4px 4px 4px 4px rgb(189, 159,  
131) }
```

Background

The CSS property to change the background color of an element to YUV 164.7780, -16.6526, 21.2427 is called "background". The background property can be set on classes, ids or directly on the HTML element.

```
.background, #background, body{  
background: rgb(189, 159, 131) }
```

If only the background color should be changed can be used:

```
.background{ background-color: rgb(189,  
159, 131) }
```

This example shows the color as background, it is applied via the CSS property "background".

To optimize and compress your CSS code, you can use our [online CSS compressor and optimizer](#) based on csstidy. If you want to create a linear or radial gradient as background or border, check our [CSS Gradient Generator](#).

Hey! You found this booklet interesting? Support Converting Colors with the new Membership Option!

The pro membership hides all ads, plus gives you double the colors in the color bucket, and more awesome pro features!

[Learn more, Memberships starting at \\$2.50/m!](#)

**Follow me
on Twitter!**

@ConvertingColor