

Converting Colors

YUV(164.9630, -0.4748,
12.3104)

Have a look what the booklet for
YUV(164.9630, -0.4748, 12.3104)
contains.

| | |
|--|----|
| YUV(164.9630, -0.4748, 12.3104) | 3 |
| <i>Conversions</i> | 4 |
| <i>Details</i> | 6 |
| <i>Harmonies</i> | 12 |
| <i>Previews</i> | 24 |
| <i>Color Blindness Simulation</i> | 28 |
| <i>CSS Examples</i> | 31 |

Color

**YUV(164.9630, -0.4748,
12.3104)**

Conversions

Conversions Part 1

| Format | Color |
|-------------|---------------------------|
| Hex | B39EA4 |
| RGB | 179, 158, 164 |
| RGB Percent | 70%, 62%, 64% |
| CMY | 0.2980, 0.3804, 0.3569 |
| CMYK | 0.00, 0.12, 0.08, 0.30 |
| HSL | 343°, 12%, 66% |
| HSV | 343°, 12%, 70% |
| XYZ | 37.5181, 36.7178, 40.2318 |
| YIQ | 164.9630, 10.5900, 6.3180 |

Conversions

Conversions Part 2

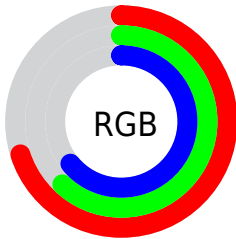
| Format | Color |
|-------------------------------------|--|
| RYB | 179, 158, 164 |
| Decimal | 11771556 |
| CIELab | 67.06, 8.74, -0.30 |
| CIELCh | 67, 8.746, 358.030 |
| Yxy | 36.7178, 0.3278, 0.3208 |
| Android (android.graphics.Color) | 4289961636 (0xFFB39EA4) |
| YUV | 164.9630, -0.4748, 12.3104 |
| Hunter-Lab | 60.5952, 4.4785, 3.0514 |

Details

The YUV color $164.9630, -0.4748, 12.3104$ is a light color, and the websafe version is hex 999999 . A complement of this color would be $172.0370, 0.4748, -12.3104$, and the grayscale version is $165.0000, 0.0000, 0.0000$.

A 20% lighter version of the original color is $220.2620, -0.6222, 12.9252$, and $113.2510, -0.6167, 11.1809$ is the 20% darker color. If you saturate the color by 10%, you get $152.9150, -0.9441, 22.8765$, and if you desaturate by 10%, it is $177.0110, -0.0054, 1.7444$.

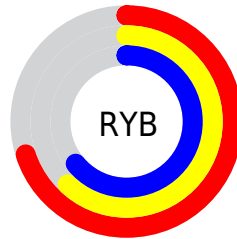
Distribution



Red (70%)

Green (62%)

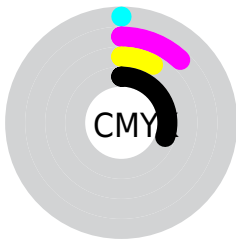
Blue (64%)



Red (70%)

Yellow (62%)

Blue (64%)

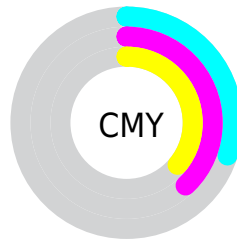


Cyan (0%)

Magenta (12%)

Yellow (8%)

Black (30%)



Cyan (30%)

Magenta (38%)

Yellow (36%)

Brightness & Saturation Gradients

These gradients show how the YUV color 164.9630, -0.4748, 12.3104 changes by changing the brightness by 10 percent. The first figure shows a shift by +10% for each color and the second figure -10%.

Similar to the brightness gradients but the following saturation gradients show a change of the YUV color 164.9630, -0.4748, 12.3104 by changing the saturation by 10% instead.

■ 164.9630, -0.4748,
12.3104

■ 164.9630, -0.4748,
12.3104

255.0000, 0.0000,
0.0000

■ 138.6640, -0.3274,
11.6957

■ 220.2620, -0.6222,
12.9252

■ 113.2510, -0.6167,
11.1809

■ 245.8700, 0.5571,
8.0070

■ 88.3650, -0.1799,
11.0809

■ 65.0660, -0.0325,
10.4661

■ 43.3540, -0.1745,
9.3365

■ 22.0550, -0.0271,
8.7218

■ 0.0000, 0.0000,

0.0000

164.9630, -0.4748,
12.3104

164.9630, -0.4748,
12.3104

152.9150, -0.9441,
22.8765

177.0110, -0.0054,
1.7444

140.8670, -1.4134,
33.4426

189.0590, 0.4639,
-8.8217

128.9330, -1.4460,
43.9088

200.9930, 0.4965,
-19.2879

116.8850, -1.9153,
54.4749

213.0410, 0.9658,
-29.8540

105.4240, -2.6740,
64.5262

225.0890, 1.4351,
-40.4201

93.3760, -3.1434,
75.0922

230.6800, 5.0878,
-45.3234

■ 81.4420, -3.1759,
85.5584

■ 232.0480, 10.3293,
-46.5231

■ 69.3940, -3.6452,
96.1245

■ 232.2760, 11.2029,
-46.7231

■ 59.3350, -4.1092,
104.9462

Harmonies

Analogous

The Analogous color harmony consists of three colors that are next to each other on the color wheel.



164.6680, 3.6147, 7.3072



164.9630, -0.4748, 12.3104



164.3500, -4.1165, 13.7251

Triad

The Triadic color harmony groups three colors that are evenly spaced from another and form a triangle on the color wheel.



164.9630, -0.4748, 12.3104



162.2790, -6.5465, -0.2447



161.4590, 7.1687, -12.6805

Complementary

The Complementary color scheme is a pair of colors which are on the opposite of each other on the color wheel.



164.9630, -0.4748, 12.3104



172.0370, 0.4748, -12.3104

Split Complementary

Split-complementary colors differ from the complementary color scheme. The scheme consists of three colors, the original color and two neighbors of the complement color.



161.0520, 4.4114, -14.9546



164.9630, -0.4748, 12.3104



161.4460, -3.1779, -7.4071

Square

The Square scheme is like the rectangle color scheme, but the four colors are evenly spaced on the color wheel.



164.9630, -0.4748, 12.3104



162.7960, -7.2944, 6.3179



160.7380, 0.6222, -12.9252



163.0190, 7.8786, -7.0327

Rectangle

The Rectangle color scheme consists of four colors that form a rectangle on the color wheel.



164.9630, -0.4748, 12.3104



164.1820, -6.0057, 12.9954



160.7380, 0.6222, -12.9252



161.3340, 6.7373, -14.3249

Sweetspot

The Sweet Spot groups the original color and five complimentary colors.



164.9630, -0.4748, 12.3104



225.9190, -0.4531, 5.3330



164.8790, 6.9617, 7.1221



113.0220, -0.0108, 3.4887



245.0000, 0.0000, 0.0000



117.0000, 0.0000, 0.0000

Same Dimension

The Same Dimension uses a secret algorithm to generate beautiful new colors.



164.9630, -0.4748, 12.3104



210.5940, -0.7858, 18.7731



166.6270, -4.2531, 10.8511



83.0330, -0.0163, 5.2331



50.7630, -3.3342, 89.6618



8.5720, -0.7750, 15.2844

Inverse Universe

The Inverse Universe completely reimagines the original color for something new.



164.9630, -0.4748, 12.3104



210.5940, -0.7858, 18.7731



170.3730, 4.2531, -10.8511



83.0330, -0.0163, 5.2331



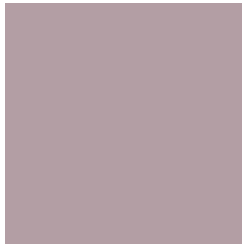
50.7630, -3.3342, 89.6618



8.5720, -0.7750, 15.2844

Previews

White Background



This preview shows how the YUV color 164.9630, -0.4748, 12.3104 looks on a white background.

Color Contrast Check

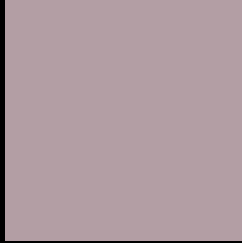
Large Text (above 18pt) WCAG AA × Fail

Any Text WCAG AA × Fail

Large Text (above 18pt) WCAG AAA × Fail

Any Text WCAG AAA × Fail

Black Background



This preview shows how the YUV color 164.9630, -0.4748, 12.3104 looks on a black background.

Color Contrast Check

Large Text (above 18pt) WCAG AA ✓ Pass

Any Text WCAG AA ✓ Pass

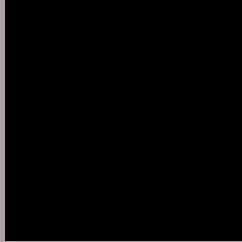
Large Text (above 18pt) WCAG AAA ✓ Pass

Any Text WCAG AAA ✓ Pass

If you want to check with other color combinations, try the [Color Contrast Checker](#).

YUV 164.9630, -0.4748, 12.3104

Background



This preview shows how black text looks on a background with the YUV color 164.9630, -0.4748, 12.3104.



This preview shows how white text looks on a background with the YUV color 164.9630, -0.4748,

Color Blindness Simulation

Color vision deficiency is a very complex topic, and I could not describe the different causes any better than Wikipedia does, so if you want to learn more, you should check out their [article about color blindness](#).

Dichromacy



Original Color

164.9630, -0.4748, 12.3104

Protanopia

163.4670, 1.7418, 1.3444

Deuteranopia

164.9630, -0.4748, 12.3104



Tritanopia

165.2450, 1.8512, 12.9401

Trichromacy



Original Color

164.9630, -0.4748, 12.3104

Protanomaly

164.2610, 0.8573, 5.0331

Deuteranomaly

164.9630, -0.4748, 12.3104

Tritanomaly

165.0170, 0.9776, 13.1401

Monochromacy



Original Color

164.9630, -0.4748, 12.3104

Achromatopsia

165.0000, 0.0000, 0.0000

Achromatomaly

164.7340, 0.1311, 4.6183

CSS Examples

Text

The CSS property to change the color of the text to YUV 164.9630, -0.4748, 12.3104 is called "color". The color property can be set on classes, ids or directly on the HTML element.

This example shows how text in the color `rgb(179, 158, 164)` looks like.

```
.text, #text, p{  
    color:rgb(179, 158, 164)  
}
```

If you want to add a text shadow in that color use the text-shadow property, you can generate a text shadow directly with our [CSS Text Shadow Generator](#).

Here you see how black text with a 4 pixel rgb(179, 158, 164) colored shadow looks like.

```
.shadow{ text-shadow: 4px 4px 2px rgb(179, 158, 164) }
```

Border

The CSS property to change the border of an element to YUV 164.9630, -0.4748, 12.3104 is called "border". The border property can be set on classes, ids or directly on the HTML element.

This example shows the color as border, it can be applied via the CSS property "border" or "border-color".

```
.border, #border, table{ border:4px solid rgb(179, 158, 164) }
```


If only the border color should be changed use the property `border-color`.

```
.border{ border-color:rgb(179, 158, 164) }
```

If you want to add a box shadow in that color use:

Here you see how a box with a 4 pixel `rgb(179, 158, 164)` colored shadow looks like.

```
.boxshadow{ -moz-box-shadow:4px 4px 4px  
4px rgb(179, 158, 164); -webkit-box-  
shadow:4px 4px 4px 4px rgb(179, 158, 164);  
box-shadow:4px 4px 4px 4px rgb(179, 158,  
164) }
```

Background

The CSS property to change the background color of an element to YUV 164.9630, -0.4748, 12.3104 is called "background". The background property can be set on classes, ids or directly on the HTML element.

```
.background, #background, body{  
background: rgb(179, 158, 164) }
```

If only the background color should be changed can be used:

```
.background{ background-color: rgb(179,  
158, 164) }
```

This example shows the color as background, it is applied via the CSS property "background".

To optimize and compress your CSS code, you can use our [online CSS compressor and optimizer](#) based on csstidy. If you want to create a linear or radial gradient as background or border, check our [CSS Gradient Generator](#).

Hey! You found this booklet interesting? Support Converting Colors with the new Membership Option!

The pro membership hides all ads, plus gives you double the colors in the color bucket, and more awesome pro features!

[Learn more, Memberships starting at \\$2.50/m!](#)

**Follow me
on Twitter!**

@ConvertingColor