

Converting Colors

YUV(165.1300, -3.5151,
54.2600)

Have a look what the booklet for
YUV(165.1300, -3.5151, 54.2600)
contains.

YUV(165.1300, -3.5151, 54.2600)	3
<i>Conversions</i>	4
<i>Details</i>	6
<i>Harmonies</i>	12
<i>Previews</i>	24
<i>Color Blindness Simulation</i>	28
<i>CSS Examples</i>	31

Color

**YUV(165.1300, -3.5151,
54.2600)**

Conversions

Conversions Part 1

Format	Color
Hex	E3879E
RGB	227, 135, 158
RGB Percent	89%, 53%, 62%
CMY	0.1098, 0.4706, 0.3804
CMYK	0.00, 0.41, 0.30, 0.11
HSL	345°, 62%, 71%
HSV	345°, 41%, 89%
XYZ	46.5141, 36.1275, 36.8695
YIQ	165.1300, 47.4490, 26.6570

Conversions

Conversions Part 2

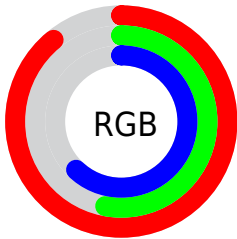
Format	Color
R_{YB}	227, 135, 158
Decimal	14911390
CIE _{Lab}	66.62, 37.91, 3.04
CIE _{LCh}	67, 38.034, 4.588
Yxy	36.1275, 0.3892, 0.3023
Android (android.graphics.Color)	4293101470 (0xFFE3879E)
YUV	165.1300, -3.5151, 54.2600
Hunter-Lab	60.1061, 32.9494, 5.7054

Details

The YUV color **165.1300, -3.5151, 54.2600** is a light color, and the websafe version is hex **FF9999**. A complement of this color would be **196.8700, 3.5151, -54.2600**, and the grayscale version is **165.0000, 0.0000, 0.0000**.

A 20% lighter version of the original color is **212.0570, 0.4649, 37.6610**, and **111.4500, -2.1938, 50.4714** is the 20% darker color. If you saturate the color by 10%, you get **149.6910, -4.2847, 67.8000**, and if you desaturate by 10%, it is **180.5690, -2.7455, 40.7200**.

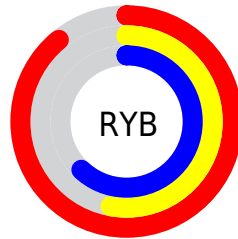
Distribution



Red (89%)

Green (53%)

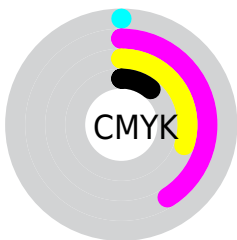
Blue (62%)



Red (89%)

Yellow (53%)

Blue (62%)

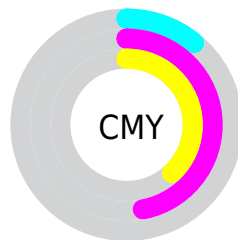


Cyan (0%)

Magenta (41%)

Yellow (30%)

Black (11%)



Cyan (11%)

Magenta (47%)

Yellow (38%)

Brightness & Saturation Gradients

These gradients show how the YUV color 165.1300, -3.5151, 54.2600 changes by changing the brightness by 10 percent. The first figure shows a shift by +10% for each color and the second figure -10%.

Similar to the brightness gradients but the following saturation gradients show a change of the YUV color 165.1300, -3.5151, 54.2600 by changing the saturation by 10% instead.

165.1300, -3.5151,
54.2600

165.1300, -3.5151,
54.2600

255.0000, 0.0000,
0.0000

138.2330, -3.0729,
52.4157

212.0570, 0.4649,
37.6610

111.4500, -2.1938,
50.4714

231.6850, 4.5923,
20.4473

85.6670, -1.3148,
48.5270

250.3040, 2.3151,
4.1184

59.7100, 0.1430,
47.6123

31.5190, 3.1951,
48.6568

20.1770, -1.5663,
35.8018

11.1770, -5.0173,

22.6468

■ 0.0000, 0.0000,
0.0000

■ 165.1300, -3.5151,
54.2600

■ 165.1300, -3.5151,
54.2600

■ 149.6910, -4.2847,
67.8000

■ 180.5690, -2.7455,
40.7200

■ 134.8390, -5.3436,
80.8252

■ 195.4210, -1.6866,
27.6948

■ 119.4000, -6.1132,
94.3652

■ 210.8600, -0.9170,
14.1548

■ 103.9610, -6.8828,
107.9052

■ 226.2990, -0.1474,
0.6148

■ 89.1090, -7.9417,
120.9304

■ 241.7380, 0.6222,
-12.9252

■ 74.3710, -8.5639,
133.8556

■ 246.6280, 4.1274,
-17.2138

Harmonies

Analogous

The Analogous color harmony consists of three colors that are next to each other on the color wheel.



166.5590, 12.5424, 37.2208



165.1300, -3.5151, 54.2600



163.4170, -18.9396, 54.8853

Triad

The Triadic color harmony groups three colors that are evenly spaced from another and form a triangle on the color wheel.



165.1300, -3.5151, 54.2600



154.9900, -25.1381, -10.5152



143.1190, 39.3813, -78.1574

Complementary

The Complementary color scheme is a pair of colors which are on the opposite of each other on the color wheel.



165.1300, -3.5151, 54.2600



196.8700, 3.5151, -54.2600

Split Complementary

Split-complementary colors differ from the complementary color scheme. The scheme consists of three colors, the original color and two neighbors of the complement color.



127.8730, 35.5586, -112.1446



165.1300, -3.5151, 54.2600



149.7330, -8.7424, -42.7388

Square

The Square scheme is like the rectangle color scheme, but the four colors are evenly spaced on the color wheel.



165.1300, -3.5151, 54.2600



159.2170, -32.6450, 17.3497



138.9360, 13.3426, -79.7509



158.3680, 35.3146, -33.6487

Rectangle

The Rectangle color scheme consists of four colors that form a rectangle on the color wheel.



165.1300, -3.5151, 54.2600



162.4840, -27.3536, 46.9335



138.9360, 13.3426, -79.7509



135.2260, 40.3146, -97.5452

Sweetspot

The Sweet Spot groups the original color and five complimentary colors.



165.1300, -3.5151, 54.2600



234.1810, -1.0752, 18.2583



166.1190, 30.0143, 33.2216



115.8380, -0.9061, 10.6661



0.0000, 0.0000, 0.0000



128.0000, 0.0000, 0.0000

Same Dimension

The Same Dimension uses a secret algorithm to generate beautiful new colors.



165.1300, -3.5151, 54.2600



170.9090, -4.8851, 73.7478



176.0090, -20.2174, 44.7191



106.9300, -0.4585, 7.0774



58.6510, -6.7299, 105.5461



16.7310, -1.8394, 30.0539

Inverse Universe

The Inverse Universe completely reimagines the original color for something new.



165.1300, -3.5151, 54.2600



170.9090, -4.8851, 73.7478



185.9910, 20.2174, -44.7191



106.9300, -0.4585, 7.0774



58.6510, -6.7299, 105.5461



16.7310, -1.8394, 30.0539

Previews

White Background



This preview shows how the YUV color 165.1300, -3.5151, 54.2600 looks on a white background.

Color Contrast Check

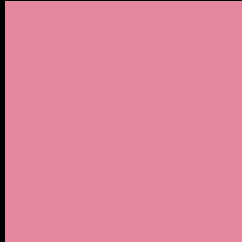
Large Text (above 18pt) WCAG AA × Fail

Any Text WCAG AA × Fail

Large Text (above 18pt) WCAG AAA × Fail

Any Text WCAG AAA × Fail

Black Background



This preview shows how the YUV color 165.1300, -3.5151, 54.2600 looks on a black background.

Color Contrast Check

Large Text (above 18pt) WCAG AA ✓ Pass

Any Text WCAG AA ✓ Pass

Large Text (above 18pt) WCAG AAA ✓ Pass

Any Text WCAG AAA ✓ Pass

If you want to check with other color combinations, try the [Color Contrast Checker](#).

YUV 165.1300, -3.5151, 54.2600

Background



This preview shows how black text looks on a background with the YUV color 165.1300, -3.5151, 54.2600.



This preview shows how white text looks on a background with the YUV color 165.1300, -3.5151,

Color Blindness Simulation

Color vision deficiency is a very complex topic, and I could not describe the different causes any better than Wikipedia does, so if you want to learn more, you should check out their [article about color blindness](#).

Dichromacy



Original Color

165.1300, -3.5151, 54.2600

Protanopia

162.6670, 5.0942, -0.5850

Deuteranopia

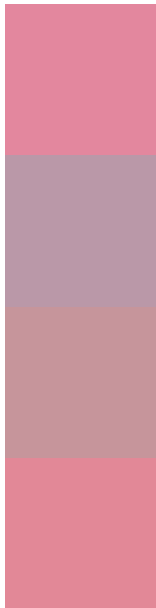
163.8340, -4.8482, 15.0546



Tritanopia

164.7510, -8.7512, 53.7154

Trichromacy



Original Color

165.1300, -3.5151, 54.2600

Protanomaly

163.9900, 1.9769, 19.3028

Deuteranomaly

164.3350, -4.6022, 29.5242

Tritanomaly

164.6200, -6.7147, 53.8303

Monochromacy



Original Color

165.1300, -3.5151, 54.2600

Achromatopsia

165.0000, 0.0000, 0.0000

Achromatomaly

165.0780, -1.5175, 20.1026

CSS Examples

Text

The CSS property to change the color of the text to YUV 165.1300, -3.5151, 54.2600 is called "color". The color property can be set on classes, ids or directly on the HTML element.

This example shows how text in the color `rgb(227, 135, 158)` looks like.

```
.text, #text, p{  
    color:rgb(227, 135, 158)  
}
```

If you want to add a text shadow in that color use the text-shadow property, you can generate a text shadow directly with our [CSS Text Shadow Generator](#).

Here you see how black text with a 4 pixel rgb(227, 135, 158) colored shadow looks like.

```
.shadow{ text-shadow: 4px 4px 2px rgb(227, 135, 158) }
```

Border

The CSS property to change the border of an element to YUV 165.1300, -3.5151, 54.2600 is called "border". The border property can be set on classes, ids or directly on the HTML element.

This example shows the color as border, it can be applied via the CSS property "border" or "border-color".

```
.border, #border, table{ border:4px solid rgb(227, 135, 158) }
```


If only the border color should be changed use the property `border-color`.

```
.border{ border-color:rgb(227, 135, 158) }
```

If you want to add a box shadow in that color use:

Here you see how a box with a 4 pixel `rgb(227, 135, 158)` colored shadow looks like.

```
.boxshadow{ -moz-box-shadow:4px 4px 4px  
4px rgb(227, 135, 158); -webkit-box-  
shadow:4px 4px 4px 4px rgb(227, 135, 158);  
box-shadow:4px 4px 4px 4px rgb(227, 135,  
158) }
```

Background

The CSS property to change the background color of an element to YUV 165.1300, -3.5151, 54.2600 is called "background". The background property can be set on classes, ids or directly on the HTML element.

```
.background, #background, body{  
background: rgb(227, 135, 158) }
```

If only the background color should be changed can be used:

```
.background{ background-color: rgb(227,  
135, 158) }
```

This example shows the color as background, it is applied via the CSS property "background".

To optimize and compress your CSS code, you can use our [online CSS compressor and optimizer](#) based on csstidy. If you want to create a linear or radial gradient as background or border, check our [CSS Gradient Generator](#).

Hey! You found this booklet interesting? Support Converting Colors with the new Membership Option!

The pro membership hides all ads, plus gives you double the colors in the color bucket, and more awesome pro features!

[Learn more, Memberships starting at \\$2.50/m!](#)

**Follow me
on Twitter!**

@ConvertingColor