

Converting Colors

YUV(165.2620, -17.3842,
22.5722)

Have a look what the booklet for
YUV(165.2620, -17.3842, 22.5722)
contains.

YUV(165.2620, -17.3842, 22.5722)	3
<i>Conversions</i>	4
<i>Details</i>	6
<i>Harmonies</i>	12
<i>Previews</i>	24
<i>Color Blindness Simulation</i>	28
<i>CSS Examples</i>	31

Color

**YUV(165.2620, -17.3842,
22.5722)**

Conversions

Conversions Part 1

Format	Color
Hex	BF9F82
RGB	191, 159, 130
RGB Percent	75%, 62%, 51%
CMY	0.2510, 0.3765, 0.4902
CMYK	0.00, 0.17, 0.32, 0.25
HSL	29°, 32%, 63%
HSV	29°, 32%, 75%
XYZ	37.9133, 37.4843, 26.3561
YIQ	165.2620, 28.3810, -2.2350

Conversions

Conversions Part 2

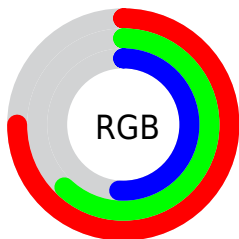
Format	Color
R_{YB}	191, 185, 130
Decimal	12558210
CIE Lab	67.64, 7.55, 19.56
CIE LCh	68, 20.968, 68.896
Yxy	37.4843, 0.3726, 0.3684
Android (android.graphics.Color)	4290748290 (0xFFBF9F82)
YUV	165.2620, -17.3842, 22.5722
Hunter-Lab	61.2245, 3.3934, 17.3338

Details

The YUV color **165.2620, -17.3842, 22.5722** is a light color, and the websafe version is hex **CC9966**. A complement of this color would be **155.7380, 17.3842, -22.5722**, and the grayscale version is **165.0000, 0.0000, 0.0000**.

A 20% lighter version of the original color is **220.6320, -18.5526, 24.0017**, and **113.4790, -16.5051, 20.6279** is the 20% darker color. If you saturate the color by 10%, you get **157.2260, -22.7894, 29.6198**, and if you desaturate by 10%, it is **173.2980, -11.9789, 15.5247**.

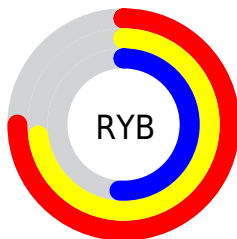
Distribution



Red (75%)

Green (62%)

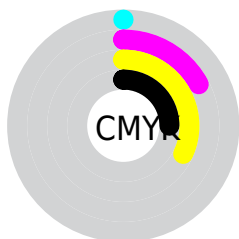
Blue (51%)



Red (75%)

Yellow (73%)

Blue (51%)

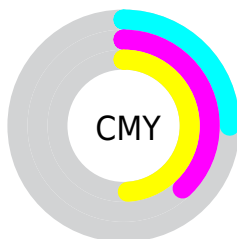


Cyan (0%)

Magenta (17%)

Yellow (32%)

Black (25%)



Cyan (25%)

Magenta (38%)

Yellow (49%)

Brightness & Saturation Gradients

These gradients show how the YUV color 165.2620, -17.3842, 22.5722 changes by changing the brightness by 10 percent. The first figure shows a shift by +10% for each color and the second figure -10%.

Similar to the brightness gradients but the following saturation gradients show a change of the YUV color 165.2620, -17.3842, 22.5722 by changing the saturation by 10% instead.

■ 165.2620,
-17.3842, 22.5722

■ 165.2620,
-17.3842, 22.5722

255.0000, 0.0000,
0.0000

■ 138.7780,
-16.6526, 21.2427

■ 220.6320,
-18.5526, 24.0017

■ 113.4790,
-16.5051, 20.6279

■ 242.3530,
-15.4570, 11.0914

■ 88.1090, -15.3367,
19.1984

■ 253.1760, -6.9888,
1.5996

■ 64.6250, -14.6051,
17.8689

■ 42.7280, -14.1629,
16.0245

■ 21.9280, -10.8105,
14.0951

■ 0.0000, 0.0000,

0.0000

■ 165.2620,
-17.3842, 22.5722

■ 165.2620,
-17.3842, 22.5722

■ 157.2260,
-22.7894, 29.6198

■ 173.2980,
-11.9789, 15.5247

■ 149.1900,
-28.1947, 36.6674

■ 181.3340, -6.5737,
8.4771

■ 141.1540,
-33.5999, 43.7149

■ 189.3700, -1.1684,
1.4295

■ 133.1180,
-39.0052, 50.7625

■ 197.4060, 4.2368,
-5.6181

■ 124.9680,
-44.8472, 57.9101

■ 205.5560, 10.0789,
-12.7656

■ 116.9320,
-50.2525, 64.9576

■ 213.5920, 15.4841,
-19.8132

■ 110.5260,
-54.4893, 70.5757

■ 220.6020, 16.9582,
-25.9610

■ 226.4720, 14.0643,
-31.1089

■ 232.3420, 11.1704,
-36.2569

Harmonies

Analogous

The Analogous color harmony consists of three colors that are next to each other on the color wheel.



166.9840, -12.3171, 30.7090



165.2620, -17.3842, 22.5722



163.0600, -17.7776, 8.7174

Triad

The Triadic color harmony groups three colors that are evenly spaced from another and form a triangle on the color wheel.



165.2620, -17.3842, 22.5722



157.0770, 6.3710, -36.9015



167.1870, 13.2188, 6.8520

Complementary

The Complementary color scheme is a pair of colors which are on the opposite of each other on the color wheel.



165.2620, -17.3842, 22.5722



155.7380, 17.3842, -22.5722

Split Complementary

Split-complementary colors differ from the complementary color scheme. The scheme consists of three colors, the original color and two neighbors of the complement color.



164.7330, 18.3726, -12.9208



165.2620, -17.3842, 22.5722



157.3570, 15.1070, -38.9011

Square

The Square scheme is like the rectangle color scheme, but the four colors are evenly spaced on the color wheel.



165.2620, -17.3842, 22.5722



158.5210, -3.7079, -24.1359



160.1500, 19.1530, -29.9496



168.2230, 5.3131, 22.6064

Rectangle

The Rectangle color scheme consists of four colors that form a rectangle on the color wheel.



165.2620, -17.3842, 22.5722



161.6780, -15.1243, -2.3486



160.1500, 19.1530, -29.9496



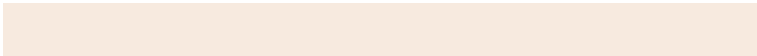
166.4250, 15.5665, 0.5043

Sweetspot

The Sweet Spot groups the original color and five complimentary colors.



165.2620, -17.3842, 22.5722



236.6330, -6.7211, 9.0919



152.0010, 5.4225, 34.2021



118.5940, -4.2368, 5.6181



252.0000, 0.0000, 0.0000



125.0000, 0.0000, 0.0000

Same Dimension

The Same Dimension uses a secret algorithm to generate beautiful new colors.



165.2620, -17.3842, 22.5722



207.5210, -26.8789, 34.6231



182.8720, -26.0659, 7.1283



90.0390, -2.4842, 3.4738



91.2670, -44.9946, 58.5248



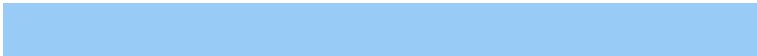
18.0740, -8.9105, 11.3361

Inverse Universe

The Inverse Universe completely reimagines the original color for something new.



155.7380, 17.3842, -22.5722



193.0660, 26.5895, -35.1379



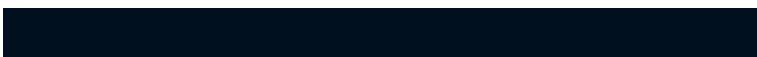
138.1280, 26.0659, -7.1283



88.9610, 2.4842, -3.4738



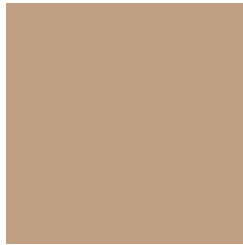
66.7330, 44.9946, -58.5248



12.9260, 8.9105, -11.3361

Previews

White Background



This preview shows how the YUV color 165.2620, -17.3842, 22.5722 looks on a white background.

Color Contrast Check

Large Text (above 18pt) WCAG AA × Fail

Any Text WCAG AA × Fail

Large Text (above 18pt) WCAG AAA × Fail

Any Text WCAG AAA × Fail

Black Background



This preview shows how the YUV color 165.2620, -17.3842, 22.5722 looks on a black background.

Color Contrast Check

Large Text (above 18pt) WCAG AA ✓ Pass

Any Text WCAG AA ✓ Pass

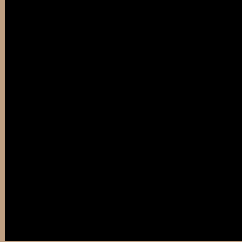
Large Text (above 18pt) WCAG AAA ✓ Pass

Any Text WCAG AAA ✓ Pass

If you want to check with other color combinations, try the [Color Contrast Checker](#).

YUV 165.2620, -17.3842, 22.5722

Background



This preview shows how black text looks on a background with the YUV color 165.2620, -17.3842, 22.5722.



This preview shows how white text looks on a background with the YUV color 165.2620, -17.3842, 22.5722.

Color Blindness Simulation

Color vision deficiency is a very complex topic, and I could not describe the different causes any better than Wikipedia does, so if you want to learn more, you should check out their [article about color blindness](#).

Dichromacy



Original Color

165.2620, -17.3842, 22.5722

Protanopia

164.3420, -15.4516, 9.3471

Deuteranopia

165.2730, -17.3896, 24.3166



Tritanopia

167.6270, -0.8021, 24.0061

Trichromacy



Original Color

165.2620, -17.3842, 22.5722

Protanomaly

164.8480, -16.1941, 14.1653

Deuteranomaly

164.9740, -17.2422, 23.7018

Tritanomaly

167.0200, -6.9119, 23.6615

Monochromacy



Original Color

165.2620, -17.3842, 22.5722

Achromatopsia

165.0000, 0.0000, 0.0000

Achromatomaly

165.0350, -6.4263, 7.8623

CSS Examples

Text

The CSS property to change the color of the text to YUV 165.2620, -17.3842, 22.5722 is called "color". The color property can be set on classes, ids or directly on the HTML element.

This example shows how text in the color `rgb(191, 159, 130)` looks like.

```
.text, #text, p{  
    color:rgb(191, 159, 130)  
}
```

If you want to add a text shadow in that color use the text-shadow property, you can generate a text shadow directly with our [CSS Text Shadow Generator](#).

Here you see how black text with a 4 pixel rgb(191, 159, 130) colored shadow looks like.

```
.shadow{ text-shadow: 4px 4px 2px rgb(191, 159, 130) }
```

Border

The CSS property to change the border of an element to YUV 165.2620, -17.3842, 22.5722 is called "border".

The border property can be set on classes, ids or directly on the HTML element.

This example shows the color as border, it can be applied via the CSS property "border" or "border-color".

```
.border, #border, table{ border:4px solid rgb(191, 159, 130) }
```


If only the border color should be changed use the property `border-color`.

```
.border{ border-color:rgb(191, 159, 130) }
```

If you want to add a box shadow in that color use:

Here you see how a box with a 4 pixel `rgb(191, 159, 130)` colored shadow looks like.

```
.boxshadow{ -moz-box-shadow:4px 4px 4px  
4px rgb(191, 159, 130); -webkit-box-  
shadow:4px 4px 4px 4px rgb(191, 159, 130);  
box-shadow:4px 4px 4px 4px rgb(191, 159,  
130) }
```

Background

The CSS property to change the background color of an element to YUV 165.2620, -17.3842, 22.5722 is called "background". The background property can be set on classes, ids or directly on the HTML element.

```
.background, #background, body{  
background: rgb(191, 159, 130) }
```

If only the background color should be changed can be used:

```
.background{ background-color: rgb(191,  
159, 130) }
```

This example shows the color as background, it is applied via the CSS property "background".

To optimize and compress your CSS code, you can use our [online CSS compressor and optimizer](#) based on csstidy. If you want to create a linear or radial gradient as background or border, check our [CSS Gradient Generator](#).

Hey! You found this booklet interesting? Support Converting Colors with the new Membership Option!

The pro membership hides all ads, plus gives you double the colors in the color bucket, and more awesome pro features!

[Learn more, Memberships starting at \\$2.50/m!](#)

**Follow me
on Twitter!**

@ConvertingColor