

Converting Colors

YUV(165.6540, -18.5634,
27.4904)

Have a look what the booklet for
YUV(165.6540, -18.5634, 27.4904)
contains.

YUV(165.6540, -18.5634, 27.4904)	3
<i>Conversions</i>	4
<i>Details</i>	6
<i>Harmonies</i>	12
<i>Previews</i>	24
<i>Color Blindness Simulation</i>	28
<i>CSS Examples</i>	31

Color

**YUV(165.6540, -18.5634,
27.4904)**

Conversions

Conversions Part 1

Format	Color
Hex	C59D80
RGB	197, 157, 128
RGB Percent	77%, 62%, 50%
CMY	0.2275, 0.3843, 0.4980
CMYK	0.00, 0.20, 0.35, 0.23
HSL	25°, 37%, 64%
HSV	25°, 35%, 77%
XYZ	38.9792, 37.5428, 25.6141
YIQ	165.6540, 33.1490, -0.5390

Conversions

Conversions Part 2

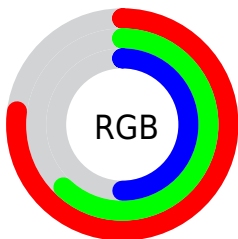
Format	Color
R_{YB}	197, 178, 128
Decimal	12950912
CIE Lab	67.68, 10.78, 20.82
CIE LCh	68, 23.443, 62.622
Yxy	37.5428, 0.3816, 0.3676
Android (android.graphics.Color)	4291140992 (0xFFC59D80)
YUV	165.6540, -18.5634, 27.4904
Hunter-Lab	61.2722, 6.3292, 18.1050

Details

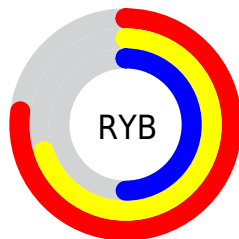
The YUV color $165.6540, -18.5634, 27.4904$ is a light color, and the websafe version is hex $CC9966$. A complement of this color would be $159.3460, 18.5634, -27.4904$, and the grayscale version is $166.0000, 0.0000, 0.0000$.

A 20% lighter version of the original color is $221.3230, -19.8792, 29.5347$, and $113.6860, -17.1002, 24.8314$ is the 20% darker color. If you saturate the color by 10%, you get $156.9170, -24.1161, 35.1528$, and if you desaturate by 10%, it is $174.3910, -13.0108, 19.8281$.

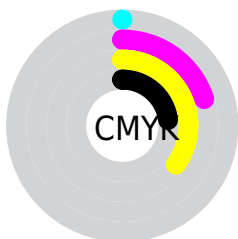
Distribution



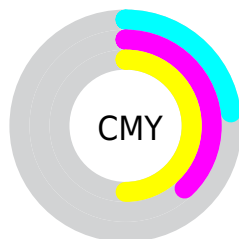
- Red (77%)
- Green (62%)
- Blue (50%)



- Red (77%)
- Yellow (70%)
- Blue (50%)



- Cyan (0%)
- Magenta (20%)
- Yellow (35%)
- Black (23%)



- Cyan (23%)
- Magenta (38%)
- Yellow (50%)

Brightness & Saturation Gradients

These gradients show how the YUV color 165.6540, -18.5634, 27.4904 changes by changing the brightness by 10 percent. The first figure shows a shift by +10% for each color and the second figure -10%.

Similar to the brightness gradients but the following saturation gradients show a change of the YUV color 165.6540, -18.5634, 27.4904 by changing the saturation by 10% instead.

■ 165.6540,
-18.5634, 27.4904

■ 165.6540,
-18.5634, 27.4904

255.0000, 0.0000,
0.0000

■ 139.1700,
-17.8318, 26.1609

■ 221.3230,
-19.8792, 29.5347

■ 113.6860,
-17.1002, 24.8314

■ 240.9510,
-15.7518, 12.3210

■ 88.9030, -16.2212,
22.8871

■ 252.9480, -7.8624,
1.7996

■ 64.8320, -15.2002,
22.0723

■ 42.5220, -15.0473,
19.7132

■ 21.6510, -10.6739,
16.9691

■ 0.5980, -0.2948,

1.2296

■ 0.0000, 0.0000,
0.0000

■ 165.6540,
-18.5634, 27.4904

■ 165.6540,
-18.5634, 27.4904

■ 156.9170,
-24.1161, 35.1528

■ 174.3910,
-13.0108, 19.8281

■ 147.7070,
-28.9426, 43.2300

■ 183.6010, -8.1843,
11.7509

■ 138.9700,
-34.4952, 50.8923

■ 192.3380, -2.6316,
4.0886

■ 129.6460,
-39.7585, 59.0695

■ 201.6620, 2.6316,
-4.0886

■ 120.9090,
-45.3111, 66.7318

■ 210.3990, 8.1843,
-11.7509

■ 111.6990,
-50.1376, 74.8090

■ 219.6090, 13.0108,
-19.8281

■ 107.6240,
-53.0586, 78.3828

■ 227.0920, 13.7586,
-26.3907

■ 233.5490, 10.5753,
-32.0535

■ 237.6580, 8.5496,
-35.6571

Harmonies

Analogous

The Analogous color harmony consists of three colors that are next to each other on the color wheel.



166.8320, -11.7492, 35.2273



165.6540, -18.5634, 27.4904



163.8110, -20.1198, 13.3208

Triad

The Triadic color harmony groups three colors that are evenly spaced from another and form a triangle on the color wheel.



165.6540, -18.5634, 27.4904



156.0120, 4.9241, -39.4755



167.2620, 16.1398, 3.2782

Complementary

The Complementary color scheme is a pair of colors which are on the opposite of each other on the color wheel.



165.6540, -18.5634, 27.4904



159.3460, 18.5634, -27.4904

Split Complementary

Split-complementary colors differ from the complementary color scheme. The scheme consists of three colors, the original color and two neighbors of the complement color.



163.4980, 21.4465, -18.8537



165.6540, -18.5634, 27.4904



155.7260, 15.4181, -45.3637

Square

The Square scheme is like the rectangle color scheme, but the four colors are evenly spaced on the color wheel.



165.6540, -18.5634, 27.4904



158.7230, -6.7654, -23.4361



158.6760, 21.3587, -37.4269



168.3200, 8.2232, 22.5214

Rectangle

The Rectangle color scheme consists of four colors that form a rectangle on the color wheel.



165.6540, -18.5634, 27.4904



162.6030, -18.0453, 1.2252



158.6760, 21.3587, -37.4269



165.9020, 18.7823, -4.2991

Sweetspot

The Sweet Spot groups the original color and five complimentary colors.



165.6540, -18.5634, 27.4904



242.4160, -7.6001, 11.0362



153.1910, 7.3008, 38.4205



120.1920, -4.5317, 6.8476



0.0000, 0.0000, 0.0000



128.0000, 0.0000, 0.0000

Same Dimension

The Same Dimension uses a secret algorithm to generate beautiful new colors.



165.6540, -18.5634, 27.4904



206.4080, -28.7951, 42.6152



185.6120, -28.4027, 9.9873



95.0390, -2.4842, 3.4738



89.2400, -43.9953, 64.6875



19.5690, -9.6475, 14.4100

Inverse Universe

The Inverse Universe completely reimagines the original color for something new.



159.3460, 18.5634, -27.4904



196.5920, 28.7951, -42.6152



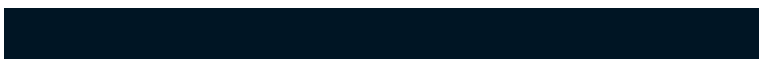
139.3880, 28.4027, -9.9873



93.9610, 2.4842, -3.4738



74.3470, 43.7059, -65.2023



16.4310, 9.6475, -14.4100

Previews

White Background



This preview shows how the YUV color 165.6540, -18.5634, 27.4904 looks on a white background.

Color Contrast Check

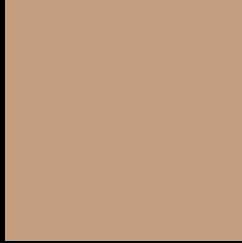
Large Text (above 18pt) WCAG AA × Fail

Any Text WCAG AA × Fail

Large Text (above 18pt) WCAG AAA × Fail

Any Text WCAG AAA × Fail

Black Background



This preview shows how the YUV color 165.6540, -18.5634, 27.4904 looks on a black background.

Color Contrast Check

Large Text (above 18pt) WCAG AA ✓ Pass

Any Text WCAG AA ✓ Pass

Large Text (above 18pt) WCAG AAA ✓ Pass

Any Text WCAG AAA ✓ Pass

If you want to check with other color combinations, try the [Color Contrast Checker](#).

YUV 165.6540, -18.5634, 27.4904 Background



This preview shows how black text looks on a background with the YUV color 165.6540, -18.5634, 27.4904.



This preview shows how white text looks on a background with the YUV color 165.6540, -18.5634, 27.4904.

Color Blindness Simulation

Color vision deficiency is a very complex topic, and I could not describe the different causes any better than Wikipedia does, so if you want to learn more, you should check out their [article about color blindness](#).

Dichromacy



Original Color

165.6540, -18.5634, 27.4904

Protanopia

164.2280, -15.8884, 9.4470

Deuteranopia

165.3440, -18.4106, 25.1313



Tritanopia

168.0190, -1.9814, 28.9243

Trichromacy



Original Color

165.6540, -18.5634, 27.4904

Protanomaly

164.7450, -16.6363, 16.0096

Deuteranomaly

165.6430, -18.5580, 25.7461

Tritanomaly

167.4120, -8.0911, 28.5797

Monochromacy



Original Color

165.6540, -18.5634, 27.4904

Achromatopsia

166.0000, 0.0000, 0.0000

Achromatomaly

165.9320, -6.8685, 9.7066

CSS Examples

Text

The CSS property to change the color of the text to YUV 165.6540, -18.5634, 27.4904 is called "color". The color property can be set on classes, ids or directly on the HTML element.

This example shows how text in the color `rgb(197, 157, 128)` looks like.

```
.text, #text, p{  
    color:rgb(197, 157, 128)  
}
```

If you want to add a text shadow in that color use the text-shadow property, you can generate a text shadow directly with our [CSS Text Shadow Generator](#).

Here you see how black text with a 4 pixel rgb(197, 157, 128) colored shadow looks like.

```
.shadow{ text-shadow: 4px 4px 2px rgb(197, 157, 128) }
```

Border

The CSS property to change the border of an element to YUV 165.6540, -18.5634, 27.4904 is called "border".

The border property can be set on classes, ids or directly on the HTML element.

This example shows the color as border, it can be applied via the CSS property "border" or "border-color".

```
.border, #border, table{ border:4px solid rgb(197, 157, 128) }
```


If only the border color should be changed use the property `border-color`.

```
.border{ border-color:rgb(197, 157, 128) }
```

If you want to add a box shadow in that color use:

Here you see how a box with a 4 pixel `rgb(197, 157, 128)` colored shadow looks like.

```
.boxshadow{ -moz-box-shadow:4px 4px 4px  
4px rgb(197, 157, 128); -webkit-box-  
shadow:4px 4px 4px 4px rgb(197, 157, 128);  
box-shadow:4px 4px 4px 4px rgb(197, 157,  
128) }
```

Background

The CSS property to change the background color of an element to YUV 165.6540, -18.5634, 27.4904 is called "background". The background property can be set on classes, ids or directly on the HTML element.

```
.background, #background, body{  
background: rgb(197, 157, 128) }
```

If only the background color should be changed can be used:

```
.background{ background-color: rgb(197,  
157, 128) }
```

This example shows the color as background, it is applied via the CSS property "background".

To optimize and compress your CSS code, you can use our [online CSS compressor and optimizer](#) based on csstidy. If you want to create a linear or radial gradient as background or border, check our [CSS Gradient Generator](#).

Hey! You found this booklet interesting? Support Converting Colors with the new Membership Option!

The pro membership hides all ads, plus gives you double the colors in the color bucket, and more awesome pro features!

[Learn more, Memberships starting at \\$2.50/m!](#)

**Follow me
on Twitter!**

@ConvertingColor