

Converting Colors

YUV(165.7190, -13.6655,
43.2194)

Have a look what the booklet for
YUV(165.7190, -13.6655, 43.2194)
contains.

YUV(165.7190, -13.6655, 43.2194)	3
<i>Conversions</i>	4
<i>Details</i>	6
<i>Harmonies</i>	12
<i>Previews</i>	24
<i>Color Blindness Simulation</i>	28
<i>CSS Examples</i>	31

Color

**YUV(165.7190, -13.6655,
43.2194)**

Conversions

Conversions Part 1

Format	Color
Hex	D7928A
RGB	215, 146, 138
RGB Percent	84%, 57%, 54%
CMY	0.1569, 0.4275, 0.4588
CMYK	0.00, 0.32, 0.36, 0.16
HSL	6°, 49%, 69%
HSV	6°, 36%, 84%
XYZ	42.8907, 36.8398, 28.8950
YIQ	165.7190, 43.6920, 12.1400

Conversions

Conversions Part 2

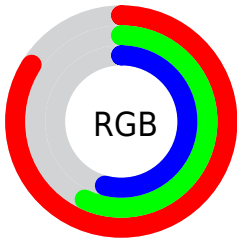
Format	Color
R _Y B	215, 147, 138
Decimal	14127754
CIE Lab	67.16, 25.08, 14.85
CIE LCh	67, 29.144, 30.632
Yxy	36.8398, 0.3948, 0.3391
Android (android.graphics.Color)	4292317834 (0xFFD7928A)
YUV	165.7190, -13.6655, 43.2194
Hunter-Lab	60.6958, 19.9192, 14.2614

Details

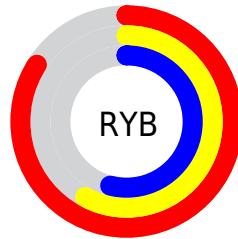
The YUV color $165.7190, -13.6655, 43.2194$ is a light color, and the websafe version is hex $CC9999$. A complement of this color would be $187.2810, 13.6655, -43.2194$, and the grayscale version is $166.0000, 0.0000, 0.0000$.

A 20% lighter version of the original color is $215.4190, -12.0386, 34.7125$, and $113.0390, -12.3442, 39.4308$ is the 20% darker color. If you saturate the color by 10%, you get $152.1720, -17.3398, 55.1002$, and if you desaturate by 10%, it is $179.3800, -9.5543, 31.2387$.

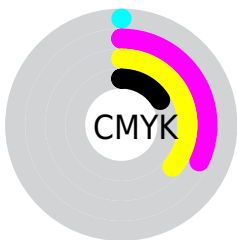
Distribution



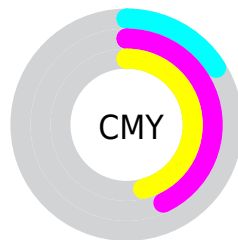
- Red (84%)
- Green (57%)
- Blue (54%)



- Red (84%)
- Yellow (58%)
- Blue (54%)



- Cyan (0%)
- Magenta (32%)
- Yellow (36%)
- Black (16%)



- Cyan (16%)
- Magenta (43%)
- Yellow (46%)

Brightness & Saturation Gradients

These gradients show how the YUV color 165.7190, -13.6655, 43.2194 changes by changing the brightness by 10 percent. The first figure shows a shift by +10% for each color and the second figure -10%.

Similar to the brightness gradients but the following saturation gradients show a change of the YUV color 165.7190, -13.6655, 43.2194 by changing the saturation by 10% instead.

■ 165.7190,
-13.6655, 43.2194

■ 165.7190,
-13.6655, 43.2194

255.0000, 0.0000,
0.0000

■ 138.9360,
-12.7864, 41.2751

■ 215.4190,
-12.0386, 34.7125

■ 113.0390,
-12.3442, 39.4308

■ 235.6340, -8.2006,
16.9840

■ 87.6690, -11.1758,
38.0013

■ 254.2020, -3.0576,
0.6998

■ 63.5870, -10.1494,
35.4422

■ 39.9180, -8.8336,
33.3979

■ 17.0210, -8.3914,
31.5536

■ 7.8880, -3.3958,

15.8842

■ 0.0000, 0.0000,
0.0000

■ 165.7190,
-13.6655, 43.2194

■ 165.7190,
-13.6655, 43.2194

■ 152.1720,
-17.3398, 55.1002

■ 179.3800, -9.5543,
31.2387

■ 137.9240,
-21.1615, 67.5957

■ 193.5140, -6.1694,
18.8432

■ 124.2630,
-25.2727, 79.5763

■ 207.1750, -2.0583,
6.8625

■ 110.7160,
-28.9470, 91.4571

■ 220.7220, 1.6161,
-5.0182

■ 97.0550, -33.0581,
103.4378

■ 234.2690, 5.2904,
-16.8989

■ 82.9210, -36.4431,
115.8333

■ 243.0400, 5.8963,
-24.5911

■ 77.1990, -38.0591,
120.8515

Harmonies

Analogous

The Analogous color harmony consists of three colors that are next to each other on the color wheel.



167.2100, -1.5825, 41.0348



165.7190, -13.6655, 43.2194



164.0740, -22.2215, 34.1381

Triad

The Triadic color harmony groups three colors that are evenly spaced from another and form a triangle on the color wheel.



165.7190, -13.6655, 43.2194



155.1200, -8.9332, -28.1692



160.8220, 26.7098, -27.0309

Complementary

The Complementary color scheme is a pair of colors which are on the opposite of each other on the color wheel.



165.7190, -13.6655, 43.2194



187.2810, 13.6655, -43.2194

Split Complementary

Split-complementary colors differ from the complementary color scheme. The scheme consists of three colors, the original color and two neighbors of the complement color.



153.3690, 26.9331, -52.0666



165.7190, -13.6655, 43.2194



151.1740, 5.8302, -50.1416

Square

The Square scheme is like the rectangle color scheme, but the four colors are evenly spaced on the color wheel.



165.7190, -13.6655, 43.2194



158.9890, -20.2076, -5.2524



149.0660, 19.6875, -61.4479



166.2170, 21.0920, 1.5637

Rectangle

The Rectangle color scheme consists of four colors that form a rectangle on the color wheel.



165.7190, -13.6655, 43.2194



162.6120, -24.9517, 23.1423



149.0660, 19.6875, -61.4479



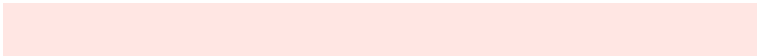
158.1090, 28.0473, -36.0526

Sweetspot

The Sweet Spot groups the original color and five complimentary colors.



165.7190, -13.6655, 43.2194



237.1330, -4.9956, 15.6694



168.8890, 18.7887, 40.4393



117.2570, -3.0847, 9.4216



0.0000, 0.0000, 0.0000



128.0000, 0.0000, 0.0000

Same Dimension

The Same Dimension uses a secret algorithm to generate beautiful new colors.



165.7190, -13.6655, 43.2194



184.9340, -19.6875, 61.4479



188.0250, -24.6623, 23.6571



100.4630, -2.2003, 5.7329



61.6950, -30.4156, 95.8605



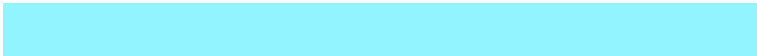
15.7920, -7.7855, 23.8614

Inverse Universe

The Inverse Universe completely reimagines the original color for something new.



187.2810, 13.6655, -43.2194



215.6530, 19.3981, -61.9627



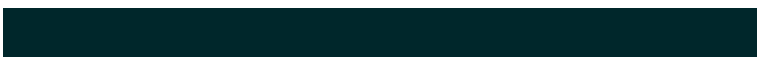
164.9750, 24.6623, -23.6571



103.1240, 1.9109, -6.2477



109.3050, 30.4156, -95.8605



27.7950, 7.4961, -24.3762

Previews

White Background



This preview shows how the YUV color 165.7190, -13.6655, 43.2194 looks on a white background.

Color Contrast Check

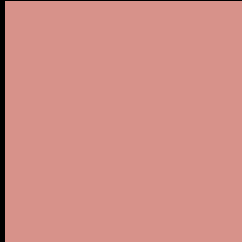
Large Text (above 18pt) WCAG AA × Fail

Any Text WCAG AA × Fail

Large Text (above 18pt) WCAG AAA × Fail

Any Text WCAG AAA × Fail

Black Background



This preview shows how the YUV color 165.7190, -13.6655, 43.2194 looks on a black background.

Color Contrast Check

Large Text (above 18pt) WCAG AA ✓ Pass

Any Text WCAG AA ✓ Pass

Large Text (above 18pt) WCAG AAA ✓ Pass

Any Text WCAG AAA ✓ Pass

If you want to check with other color combinations, try the [Color Contrast Checker](#).

YUV 165.7190, -13.6655, 43.2194

Background



This preview shows how black text looks on a background with the YUV color 165.7190, -13.6655, 43.2194.



This preview shows how white text looks on a background with the YUV color 165.7190, -13.6655,

Color Blindness Simulation

Color vision deficiency is a very complex topic, and I could not describe the different causes any better than Wikipedia does, so if you want to learn more, you should check out their [article about color blindness](#).

Dichromacy



Original Color

165.7190, -13.6655, 43.2194

Protanopia

163.5680, -8.1680, 6.5179

Deuteranopia

164.7610, -14.1792, 21.2576



Tritanopia

166.9670, -6.3927, 43.8789

Trichromacy



Original Color

165.7190, -13.6655, 43.2194

Protanomaly

164.4880, -10.1006, 19.7430

Deuteranomaly

165.2180, -13.9115, 28.7498

Tritanomaly

166.5710, -9.1555, 43.3492

Monochromacy



Original Color

165.7190, -13.6655, 43.2194

Achromatopsia

166.0000, 0.0000, 0.0000

Achromatomaly

166.1330, -4.9956, 15.6694

CSS Examples

Text

The CSS property to change the color of the text to YUV 165.7190, -13.6655, 43.2194 is called "color". The color property can be set on classes, ids or directly on the HTML element.

This example shows how text in the color `rgb(215, 146, 138)` looks like.

```
.text, #text, p{  
    color:rgb(215, 146, 138)  
}
```

If you want to add a text shadow in that color use the text-shadow property, you can generate a text shadow directly with our [CSS Text Shadow Generator](#).

Here you see how black text with a 4 pixel rgb(215, 146, 138) colored shadow looks like.

```
.shadow{ text-shadow: 4px 4px 2px rgb(215, 146, 138) }
```

Border

The CSS property to change the border of an element to YUV 165.7190, -13.6655, 43.2194 is called "border".

The border property can be set on classes, ids or directly on the HTML element.

This example shows the color as border, it can be applied via the CSS property "border" or "border-color".

```
.border, #border, table{ border:4px solid rgb(215, 146, 138) }
```


If only the border color should be changed use the property `border-color`.

```
.border{ border-color:rgb(215, 146, 138) }
```

If you want to add a box shadow in that color use:

Here you see how a box with a 4 pixel `rgb(215, 146, 138)` colored shadow looks like.

```
.boxshadow{ -moz-box-shadow:4px 4px 4px  
4px rgb(215, 146, 138); -webkit-box-  
shadow:4px 4px 4px 4px rgb(215, 146, 138);  
box-shadow:4px 4px 4px 4px rgb(215, 146,  
138) }
```

Background

The CSS property to change the background color of an element to YUV 165.7190, -13.6655, 43.2194 is called "background". The background property can be set on classes, ids or directly on the HTML element.

```
.background, #background, body{  
background: rgb(215, 146, 138) }
```

If only the background color should be changed can be used:

```
.background{ background-color: rgb(215,  
146, 138) }
```

This example shows the color as background, it is applied via the CSS property "background".

To optimize and compress your CSS code, you can use our [online CSS compressor and optimizer](#) based on csstidy. If you want to create a linear or radial gradient as background or border, check our [CSS Gradient Generator](#).

Hey! You found this booklet interesting? Support Converting Colors with the new Membership Option!

The pro membership hides all ads, plus gives you double the colors in the color bucket, and more awesome pro features!

[Learn more, Memberships starting at \\$2.50/m!](#)

**Follow me
on Twitter!**

@ConvertingColor