

# Converting Colors

YUV(166.1820, -19.3167,  
35.7974)

Have a look what the booklet for  
YUV(166.1820, -19.3167, 35.7974)  
contains.

<b>YUV(166.1820, -19.3167, 35.7974)</b> .....	3
<b><i>Conversions</i></b> .....	4
<b><i>Details</i></b> .....	6
<b><i>Harmonies</i></b> .....	12
<b><i>Previews</i></b> .....	24
<b><i>Color Blindness Simulation</i></b> .....	28
<b><i>CSS Examples</i></b> .....	31

# Color

**YUV(166.1820, -19.3167,  
35.7974)**

# Conversions

## Conversions Part 1

<b>Format</b>	<b>Color</b>
Hex	CF997F
RGB	207, 153, 127
RGB Percent	81%, 60%, 50%
CMY	0.1882, 0.4000, 0.5020
CMYK	0.00, 0.26, 0.39, 0.19
HSL	19°, 45%, 65%
HSV	19°, 39%, 81%
XYZ	40.9541, 37.5802, 25.1739
YIQ	166.1820, 40.5300, 3.3620

# Conversions

## Conversions Part 2

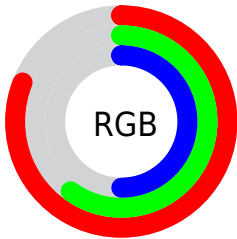
<b>Format</b>	<b>Color</b>
<b>R<sub>YB</sub></b>	207, 166, 127
Decimal	13605247
CIE <sub>Lab</sub>	67.71, 16.83, 21.58
CIE <sub>LCh</sub>	68, 27.365, 52.043
Yxy	37.5802, 0.3949, 0.3624
Android (android.graphics.Color)	4291795327 (0xFFCF997F)
YUV	166.1820, -19.3167, 35.7974
Hunter-Lab	61.3027, 11.9698, 18.5645

# Details

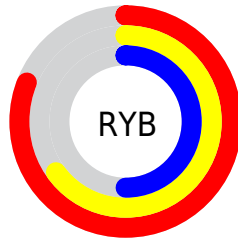
The YUV color  $166.1820, -19.3167, 35.7974$  is a light color, and the websafe version is hex  $CC9966$ . A complement of this color would be  $167.8180, 19.3167, -35.7974$ , and the grayscale version is  $166.0000, 0.0000, 0.0000$ .

A 20% lighter version of the original color is  $218.2740, -18.8691, 32.2087$ , and  $113.9150, -17.7061, 32.5235$  is the 20% darker color. If you saturate the color by 10%, you get  $155.5700, -24.4380, 45.1041$ , and if you desaturate by 10%, it is  $176.7940, -14.1954, 26.4907$ .

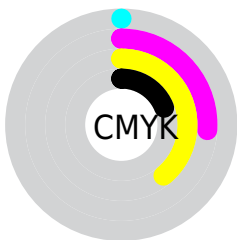
# Distribution



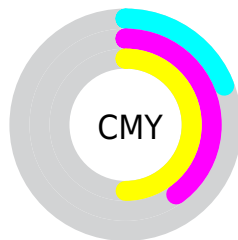
- Red (81%)
- Green (60%)
- Blue (50%)



- Red (81%)
- Yellow (65%)
- Blue (50%)



- Cyan (0%)
- Magenta (26%)
- Yellow (39%)
- Black (19%)



- Cyan (19%)
- Magenta (40%)
- Yellow (50%)

# Brightness & Saturation Gradients

These gradients show how the YUV color 166.1820, -19.3167, 35.7974 changes by changing the brightness by 10 percent. The first figure shows a shift by +10% for each color and the second figure -10%.

Similar to the brightness gradients but the following saturation gradients show a change of the YUV color 166.1820, -19.3167, 35.7974 by changing the saturation by 10% instead.



■ 166.1820,  
-19.3167, 35.7974

■ 166.1820,  
-19.3167, 35.7974

255.0000, 0.0000,  
0.0000

■ 139.6980,  
-18.5851, 34.4679

■ 218.2740,  
-18.8691, 32.2087

■ 113.9150,  
-17.7061, 32.5235

■ 238.3750,  
-15.4679, 14.5801

■ 89.1320, -16.8271,  
30.5792

■ 252.8340, -8.2992,  
1.8996

■ 65.0500, -15.8006,  
28.0202

■ 42.1530, -15.3584,  
26.1758

■ 21.0970, -10.4008,  
22.7169

■ 5.0830, -2.5059,

10.4512

■ 0.0000, 0.0000,  
0.0000

■ 166.1820,  
-19.3167, 35.7974

■ 166.1820,  
-19.3167, 35.7974

■ 155.5700,  
-24.4380, 45.1041

■ 176.7940,  
-14.1954, 26.4907

■ 145.0720,  
-29.1225, 54.3109

■ 187.2920, -9.5110,  
17.2839

■ 134.4600,  
-34.2438, 63.6176

■ 197.9040, -4.3897,  
7.9772

■ 123.8480,  
-39.3651, 72.9243

■ 208.5160, 0.7316,  
-1.3295

■ 113.2360,  
-44.4863, 82.2310

■ 219.1280, 5.8529,  
-10.6363

■ 102.7380,  
-49.1708, 91.4378

■ 229.6260, 10.5374,  
-19.8430

■ 101.2220,  
-49.9024, 92.7673

■ 238.3000, 8.2331,  
-27.4501

■ 240.6480, 7.0755,  
-29.5093

# Harmonies

## Analogous

The Analogous color harmony consists of three colors that are next to each other on the color wheel.



168.0330, -9.8763, 41.1901



166.1820, -19.3167, 35.7974



164.2420, -23.7833, 21.7128

# Triad

The Triadic color harmony groups three colors that are evenly spaced from another and form a triangle on the color wheel.



166.1820, -19.3167, 35.7974



154.6760, 1.1457, -40.9349



166.2870, 21.5505, -5.5137

# Complementary

The Complementary color scheme is a pair of colors which are on the opposite of each other on the color wheel.



166.1820, -19.3167, 35.7974



167.8180, 19.3167, -35.7974

# Split Complementary

Split-complementary colors differ from the complementary color scheme. The scheme consists of three colors, the original color and two neighbors of the complement color.



160.5610, 25.8524, -32.0640



166.1820, -19.3167, 35.7974



152.2580, 15.1558, -54.6003

# Square

The Square scheme is like the rectangle color scheme, but the four colors are evenly spaced on the color wheel.



166.1820, -19.3167, 35.7974



158.3660, -12.0124, -20.4920



154.2720, 24.0229, -51.9815



168.9650, 13.3283, 18.4477



# Rectangle

The Rectangle color scheme consists of four colors that form a rectangle on the color wheel.



166.1820, -19.3167, 35.7974



162.9800, -23.1611, 8.7875



154.2720, 24.0229, -51.9815



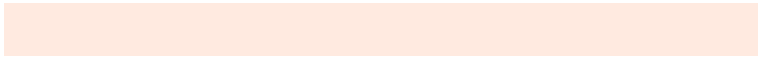
164.8020, 23.7616, -14.7354

# Sweetspot

The Sweet Spot groups the original color and five complimentary colors.



166.1820, -19.3167, 35.7974



239.1390, -7.4635, 13.9101



157.1900, 12.2313, 43.6834



118.3170, -4.1003, 8.4920



0.0000, 0.0000, 0.0000



128.0000, 0.0000, 0.0000



# Same Dimension

The Same Dimension uses a secret algorithm to generate beautiful new colors.



166.1820, -19.3167, 35.7974



195.2890, -28.2435, 52.3665



189.0750, -30.6030, 15.7202



99.0500, -2.4897, 5.2181



82.5170, -40.6809, 74.9686



19.8900, -9.8058, 18.5135



# Inverse Universe

The Inverse Universe completely reimagines the original color for something new.



167.8180, 19.3167, -35.7974



197.7110, 28.2435, -52.3665



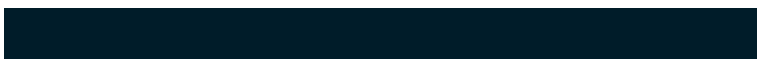
144.9250, 30.6030, -15.7202



99.3630, 2.7790, -4.7034



86.0700, 40.3915, -75.4834



21.1100, 9.8058, -18.5135



# Previews

## White Background



This preview shows how the YUV color 166.1820, -19.3167, 35.7974 looks on a white background.

## Color Contrast Check

Large Text (above 18pt) WCAG AA × Fail

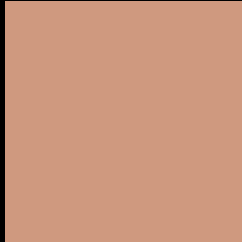
Any Text WCAG AA × Fail

Large Text (above 18pt) WCAG AAA × Fail

Any Text WCAG AAA × Fail



# Black Background



This preview shows how the YUV color 166.1820, -19.3167, 35.7974 looks on a black background.

## Color Contrast Check

Large Text (above 18pt) WCAG AA ✓ Pass

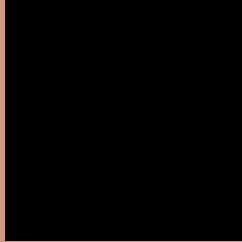
Any Text WCAG AA ✓ Pass

Large Text (above 18pt) WCAG AAA ✓ Pass

Any Text WCAG AAA ✓ Pass

If you want to check with other color combinations, try the [Color Contrast Checker](#).

# YUV 166.1820, -19.3167, 35.7974 Background



This preview shows how black text looks on a background with the YUV color 166.1820, -19.3167, 35.7974.



This preview shows how white text looks on a background with the YUV color 166.1820, -19.3167, 35.7974.

35.7974.

# Color Blindness Simulation

Color vision deficiency is a very complex topic, and I could not describe the different causes any better than Wikipedia does, so if you want to learn more, you should check out their [article about color blindness](#).

## Dichromacy



### Original Color

166.1820, -19.3167, 35.7974

### Protanopia

164.3420, -15.4516, 9.3471

### Deuteranopia

165.7030, -19.5736, 24.8165



## Tritanopia

167.9060, -3.8977, 36.9164

# Trichromacy



## Original Color

166.1820, -19.3167, 35.7974

## Protanomaly

165.3540, -16.9365, 18.9835

## Deuteranomaly

166.0240, -19.7318, 28.9200

## Tritanomaly

167.4130, -9.5706, 36.4718

# Monochromacy



## Original Color

166.1820, -19.3167, 35.7974

## Achromatopsia

166.0000, 0.0000, 0.0000

## Achromatomaly

165.9540, -6.8793, 13.1953

# CSS Examples

## Text

The CSS property to change the color of the text to YUV 166.1820, -19.3167, 35.7974 is called "color". The color property can be set on classes, ids or directly on the HTML element.

This example shows how text in the color `rgb(207, 153, 127)` looks like.

```
.text, #text, p{  
    color:rgb(207, 153, 127)  
}
```

If you want to add a text shadow in that color use the text-shadow property, you can generate a text shadow directly with our [CSS Text Shadow Generator](#).

Here you see how black text with a 4 pixel rgb(207, 153, 127) colored shadow looks like.

```
.shadow{ text-shadow: 4px 4px 2px rgb(207, 153, 127) }
```

## Border

The CSS property to change the border of an element to YUV 166.1820, -19.3167, 35.7974 is called "border".

The border property can be set on classes, ids or directly on the HTML element.

This example shows the color as border, it can be applied via the CSS property "border" or "border-color".

```
.border, #border, table{ border:4px solid rgb(207, 153, 127) }
```



If only the border color should be changed use the property `border-color`.

```
.border{ border-color:rgb(207, 153, 127) }
```

If you want to add a box shadow in that color use:

Here you see how a box with a 4 pixel `rgb(207, 153, 127)` colored shadow looks like.

```
.boxshadow{ -moz-box-shadow:4px 4px 4px  
4px rgb(207, 153, 127); -webkit-box-  
shadow:4px 4px 4px 4px rgb(207, 153, 127);  
box-shadow:4px 4px 4px 4px rgb(207, 153,  
127) }
```

# Background

The CSS property to change the background color of an element to YUV 166.1820, -19.3167, 35.7974 is called "background". The background property can be set on classes, ids or directly on the HTML element.

```
.background, #background, body{  
background: rgb(207, 153, 127) }
```

If only the background color should be changed can be used:

```
.background{ background-color: rgb(207,  
153, 127) }
```

This example shows the color as background, it is applied via the CSS property "background".

To optimize and compress your CSS code, you can use our [online CSS compressor and optimizer](#) based on csstidy. If you want to create a linear or radial gradient as background or border, check our [CSS Gradient Generator](#).

Hey! You found this booklet interesting? Support Converting Colors with the new Membership Option!

The pro membership hides all ads, plus gives you double the colors in the color bucket, and more awesome pro features!

**[Learn more, Memberships starting at \\$2.50/m!](#)**

**Follow me  
on Twitter!**

@ConvertingColor