

Converting Colors

YUV(166.2560, -11.4652,
37.4865)

Have a look what the booklet for
YUV(166.2560, -11.4652, 37.4865)
contains.

YUV(166.2560, -11.4652, 37.4865)	3
<i>Conversions</i>	4
<i>Details</i>	6
<i>Harmonies</i>	12
<i>Previews</i>	24
<i>Color Blindness Simulation</i>	28
<i>CSS Examples</i>	31

Color

**YUV(166.2560, -11.4652,
37.4865)**

Conversions

Conversions Part 1

Format	Color
Hex	D1958F
RGB	209, 149, 143
RGB Percent	82%, 58%, 56%
CMY	0.1804, 0.4157, 0.4392
CMYK	0.00, 0.29, 0.32, 0.18
HSL	5°, 42%, 69%
HSV	5°, 32%, 82%
XYZ	41.9999, 37.0334, 30.9211
YIQ	166.2560, 37.6860, 10.8540

Conversions

Conversions Part 2

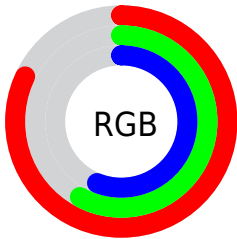
Format	Color
R _Y B	209, 150, 143
Decimal	13735311
CIE Lab	67.30, 21.78, 12.16
CIE LCh	67, 24.944, 29.186
Yxy	37.0334, 0.3820, 0.3368
Android (android.graphics.Color)	4291925391 (0xFFD1958F)
YUV	166.2560, -11.4652, 37.4865
Hunter-Lab	60.8551, 16.6976, 12.4726

Details

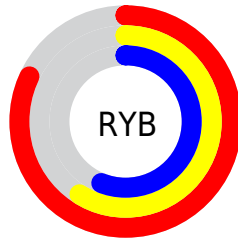
The YUV color **166.2560, -11.4652, 37.4865** is a light color, and the websafe version is hex **CC9999**. A complement of this color would be **185.7440, 11.4652, -37.4865**, and the grayscale version is **166.0000, 0.0000, 0.0000**.

A 20% lighter version of the original color is **217.8640, -10.2860, 32.5683**, and **113.8750, -10.2914, 34.3126** is the 20% darker color. If you saturate the color by 10%, you get **152.7090, -15.1395, 49.3672**, and if you desaturate by 10%, it is **179.8030, -7.7909, 25.6058**.

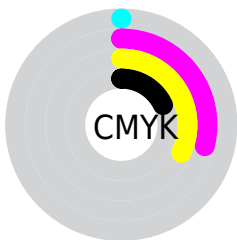
Distribution



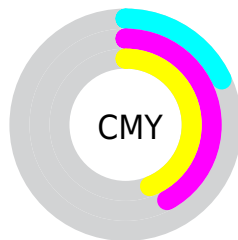
- Red (82%)
- Green (58%)
- Blue (56%)



- Red (82%)
- Yellow (59%)
- Blue (56%)



- Cyan (0%)
- Magenta (29%)
- Yellow (32%)
- Black (18%)



- Cyan (18%)
- Magenta (42%)
- Yellow (44%)

Brightness & Saturation Gradients

These gradients show how the YUV color 166.2560, -11.4652, 37.4865 changes by changing the brightness by 10 percent. The first figure shows a shift by +10% for each color and the second figure -10%.

Similar to the brightness gradients but the following saturation gradients show a change of the YUV color 166.2560, -11.4652, 37.4865 by changing the saturation by 10% instead.

■ 166.2560,
-11.4652, 37.4865

■ 166.2560,
-11.4652, 37.4865

255.0000, 0.0000,
0.0000

■ 139.6580,
-11.1704, 36.2569

■ 217.8640,
-10.2860, 32.5683

■ 113.8750,
-10.2914, 34.3126

■ 238.0790, -6.4479,
14.8397

■ 88.9780, -9.8492,
32.4683

254.7720, -0.8736,
0.2000

■ 64.6080, -8.6807,
31.0388

■ 41.5260, -7.6543,
28.4797

■ 18.4720, -9.1067,
27.6501

■ 6.5780, -3.2430,

13.5251

■ 0.0000, 0.0000,
0.0000

■ 166.2560,
-11.4652, 37.4865

■ 166.2560,
-11.4652, 37.4865

■ 152.7090,
-15.1395, 49.3672

■ 179.8030, -7.7909,
25.6058

■ 139.1620,
-18.8139, 61.2479

■ 193.3500, -4.1165,
13.7251

■ 125.6150,
-22.4882, 73.1286

■ 206.8970, -0.4422,
1.8443

■ 112.0680,
-26.1625, 85.0094

■ 220.4440, 3.2321,
-10.0364

■ 98.6350, -29.4001,
96.7901

■ 233.8770, 6.4696,
-21.8171

■ 85.0880, -33.0744,
108.6708

■ 241.2460, 6.7807,
-28.2797

■ 73.6440, -36.3065,
118.7072

Harmonies

Analogous

The Analogous color harmony consists of three colors that are next to each other on the color wheel.



167.5790, -1.2714, 34.5722



166.2560, -11.4652, 37.4865



164.8500, -19.1530, 29.9496

Triad

The Triadic color harmony groups three colors that are evenly spaced from another and form a triangle on the color wheel.



166.2560, -11.4652, 37.4865



157.2670, -8.5126, -23.0362



161.5190, 22.9151, -23.2572

Complementary

The Complementary color scheme is a pair of colors which are on the opposite of each other on the color wheel.



166.2560, -11.4652, 37.4865



185.7440, 11.4652, -37.4865

Split Complementary

Split-complementary colors differ from the complementary color scheme. The scheme consists of three colors, the original color and two neighbors of the complement color.



156.2840, 22.5380, -42.3451



166.2560, -11.4652, 37.4865



154.0720, 3.9085, -40.4051

Square

The Square scheme is like the rectangle color scheme, but the four colors are evenly spaced on the color wheel.



166.2560, -11.4652, 37.4865



160.2820, -17.8870, -2.8783



153.4050, 15.5763, -49.4672



165.8210, 18.3292, 1.0340

Rectangle

The Rectangle color scheme consists of four colors that form a rectangle on the color wheel.



166.2560, -11.4652, 37.4865



163.8120, -21.5993, 21.2129



153.4050, 15.5763, -49.4672



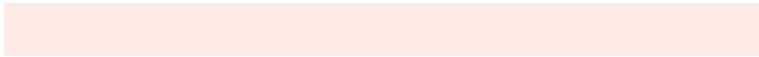
159.5890, 23.3736, -30.3346

Sweetspot

The Sweet Spot groups the original color and five complimentary colors.



166.2560, -11.4652, 37.4865



240.0510, -3.9691, 13.1103



169.6880, 16.9158, 34.4766



118.6590, -2.7899, 8.1921



0.0000, 0.0000, 0.0000



128.0000, 0.0000, 0.0000

Same Dimension

The Same Dimension uses a secret algorithm to generate beautiful new colors.



166.2560, -11.4652, 37.4865



192.2860, -16.9030, 55.0002



185.6270, -21.0151, 20.4981



97.8760, -1.9109, 6.2477



59.0370, -29.1052, 95.5606



14.6070, -7.2013, 23.1467

Inverse Universe

The Inverse Universe completely reimagines the original color for something new.



185.7440, 11.4652, -37.4865



220.7140, 16.9030, -55.0002



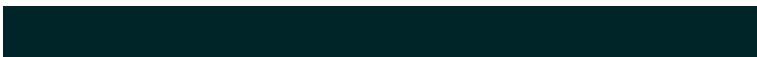
166.9600, 20.7257, -21.0129



101.1240, 1.9109, -6.2477



108.9630, 29.1052, -95.5606



26.3930, 7.2013, -23.1467

Previews

White Background



This preview shows how the YUV color 166.2560, -11.4652, 37.4865 looks on a white background.

Color Contrast Check

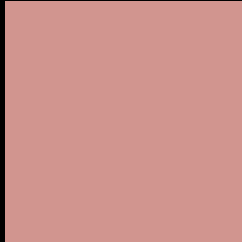
Large Text (above 18pt) WCAG AA × Fail

Any Text WCAG AA × Fail

Large Text (above 18pt) WCAG AAA × Fail

Any Text WCAG AAA × Fail

Black Background



This preview shows how the YUV color 166.2560, -11.4652, 37.4865 looks on a black background.

Color Contrast Check

Large Text (above 18pt) WCAG AA ✓ Pass

Any Text WCAG AA ✓ Pass

Large Text (above 18pt) WCAG AAA ✓ Pass

Any Text WCAG AAA ✓ Pass

If you want to check with other color combinations, try the [Color Contrast Checker](#).

YUV 166.2560, -11.4652, 37.4865

Background



This preview shows how black text looks on a background with the YUV color 166.2560, -11.4652, 37.4865.



This preview shows how white text looks on a background with the YUV color 166.2560, -11.4652, 37.4865.

37.4865.

Color Blindness Simulation

Color vision deficiency is a very complex topic, and I could not describe the different causes any better than Wikipedia does, so if you want to learn more, you should check out their [article about color blindness](#).

Dichromacy



Original Color

166.2560, -11.4652, 37.4865

Protanopia

164.3120, -6.5628, 4.9884

Deuteranopia

165.0320, -11.8478, 20.1429



Tritanopia

167.3900, -4.6293, 38.2460

Trichromacy



Original Color

166.2560, -11.4652, 37.4865

Protanomaly

165.2210, -8.4900, 16.4692

Deuteranomaly

165.7770, -11.7221, 26.5056

Tritanomaly

167.1080, -6.9552, 37.6163

Monochromacy



Original Color

166.2560, -11.4652, 37.4865

Achromatopsia

166.0000, 0.0000, 0.0000

Achromatomaly

166.3500, -4.1165, 13.7251

CSS Examples

Text

The CSS property to change the color of the text to YUV 166.2560, -11.4652, 37.4865 is called "color". The color property can be set on classes, ids or directly on the HTML element.

This example shows how text in the color `rgb(209, 149, 143)` looks like.

```
.text, #text, p{  
    color:rgb(209, 149, 143)  
}
```

If you want to add a text shadow in that color use the text-shadow property, you can generate a text shadow directly with our [CSS Text Shadow Generator](#).

Here you see how black text with a 4 pixel rgb(209, 149, 143) colored shadow looks like.

```
.shadow{ text-shadow: 4px 4px 2px rgb(209, 149, 143) }
```

Border

The CSS property to change the border of an element to YUV 166.2560, -11.4652, 37.4865 is called "border".

The border property can be set on classes, ids or directly on the HTML element.

This example shows the color as border, it can be applied via the CSS property "border" or "border-color".

```
.border, #border, table{ border:4px solid rgb(209, 149, 143) }
```


If only the border color should be changed use the property `border-color`.

```
.border{ border-color:rgb(209, 149, 143) }
```

If you want to add a box shadow in that color use:

Here you see how a box with a 4 pixel `rgb(209, 149, 143)` colored shadow looks like.

```
.boxshadow{ -moz-box-shadow:4px 4px 4px  
4px rgb(209, 149, 143); -webkit-box-  
shadow:4px 4px 4px 4px rgb(209, 149, 143);  
box-shadow:4px 4px 4px 4px rgb(209, 149,  
143) }
```

Background

The CSS property to change the background color of an element to YUV 166.2560, -11.4652, 37.4865 is called "background". The background property can be set on classes, ids or directly on the HTML element.

```
.background, #background, body{  
background: rgb(209, 149, 143) }
```

If only the background color should be changed can be used:

```
.background{ background-color: rgb(209,  
149, 143) }
```

This example shows the color as background, it is applied via the CSS property "background".

To optimize and compress your CSS code, you can use our [online CSS compressor and optimizer](#) based on csstidy. If you want to create a linear or radial gradient as background or border, check our [CSS Gradient Generator](#).

Hey! You found this booklet interesting? Support Converting Colors with the new Membership Option!

The pro membership hides all ads, plus gives you double the colors in the color bucket, and more awesome pro features!

[Learn more, Memberships starting at \\$2.50/m!](#)

**Follow me
on Twitter!**

@ConvertingColor