

Converting Colors

YUV(166.3540, -3.1325,
71.6035)

Have a look what the booklet for
YUV(166.3540, -3.1325, 71.6035)
contains.

YUV(166.3540, -3.1325, 71.6035)	3
<i>Conversions</i>	4
<i>Details</i>	6
<i>Harmonies</i>	12
<i>Previews</i>	24
<i>Color Blindness Simulation</i>	28
<i>CSS Examples</i>	31

Color

**YUV(166.3540, -3.1325,
71.6035)**

Conversions

Conversions Part 1

Format	Color
Hex	F87EA0
RGB	248, 126, 160
RGB Percent	97%, 49%, 63%
CMY	0.0275, 0.5059, 0.3725
CMYK	0.00, 0.49, 0.35, 0.03
HSL	343°, 90%, 73%
HSV	343°, 49%, 97%
XYZ	52.5174, 37.4162, 37.7118
YIQ	166.3540, 61.7980, 36.4380

Conversions

Conversions Part 2

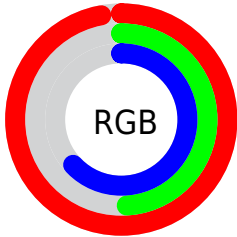
Format	Color
R _Y B	248, 126, 160
Decimal	16285344
CIE Lab	67.59, 50.00, 3.66
CIE LCh	68, 50.131, 4.190
Yxy	37.4162, 0.4114, 0.2931
Android (android.graphics.Color)	4294475424 (0xFFFF87EA0)
YUV	166.3540, -3.1325, 71.6035
Hunter-Lab	61.1688, 46.2085, 6.2647

Details

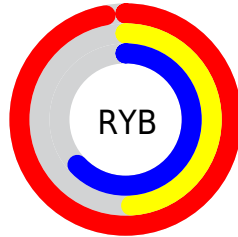
The YUV color **166.3540, -3.1325, 71.6035** is a light color, and the websafe version is hex **FF6699**. A complement of this color would be **207.6460, 3.1325, -71.6035**, and the grayscale version is **166.0000, 0.0000, 0.0000**.

A 20% lighter version of the original color is **207.0020, 3.9430, 42.0942**, and **110.9020, -0.9377, 67.6149** is the 20% darker color. If you saturate the color by 10%, you get **149.6270, -3.7601, 86.2731**, and if you desaturate by 10%, it is **183.0810, -2.5049, 56.9340**.

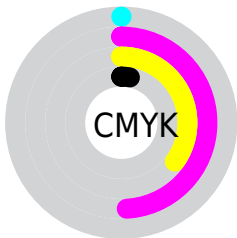
Distribution



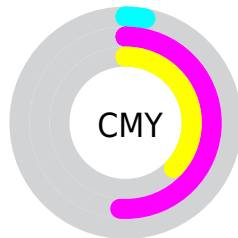
- Red (97%)
- Green (49%)
- Blue (63%)



- Red (97%)
- Yellow (49%)
- Blue (63%)



- Cyan (0%)
- Magenta (49%)
- Yellow (35%)
- Black (3%)



- Cyan (3%)
- Magenta (51%)
- Yellow (37%)

Brightness & Saturation Gradients

These gradients show how the YUV color 166.3540, -3.1325, 71.6035 changes by changing the brightness by 10 percent. The first figure shows a shift by +10% for each color and the second figure -10%.

Similar to the brightness gradients but the following saturation gradients show a change of the YUV color 166.3540, -3.1325, 71.6035 by changing the saturation by 10% instead.

166.3540, -3.1325,
71.6035

166.3540, -3.1325,
71.6035

255.0000, 0.0000,
0.0000

138.5710, -2.2535,
69.6592

207.0020, 3.9430,
42.0942

110.9020, -0.9377,
67.6149

227.2170, 7.7810,
24.3657

83.0590, 0.9569,
66.6003

245.6080, 4.6303,
8.2368

50.9330, 5.4560,
70.2188

35.0580, 2.4364,
58.7081

24.5910, -2.7564,
44.2087

15.1780, -6.4968,

30.5389

■ 0.0000, 0.0000,
0.0000

■ 166.3540, -3.1325,
71.6035

■ 166.3540, -3.1325,
71.6035

■ 149.6270, -3.7601,
86.2731

■ 183.0810, -2.5049,
56.9340

■ 132.9000, -4.3877,
100.9427

■ 199.8080, -1.8773,
42.2644

■ 116.7600, -5.3047,
115.0975

■ 215.9480, -0.9604,
28.1096

■ 100.0330, -5.9323,
129.7671

■ 232.6750, -0.3328,
13.4400

■ 83.4200, -6.1231,
144.3367

■ 249.2880, -0.1420,
-1.1296

■ 82.0180, -6.4179,
145.5662

■ 252.9070, 1.0318,
-4.3034

Harmonies

Analogous

The Analogous color harmony consists of three colors that are next to each other on the color wheel.



169.6020, 17.4512, 49.4610



166.3540, -3.1325, 71.6035



164.5500, -23.9351, 70.5547

Triad

The Triadic color harmony groups three colors that are evenly spaced from another and form a triangle on the color wheel.



166.3540, -3.1325, 71.6035



155.0790, -33.5629, -14.9783



133.5900, 54.9251, -117.1584

Complementary

The Complementary color scheme is a pair of colors which are on the opposite of each other on the color wheel.



166.3540, -3.1325, 71.6035



207.6460, 3.1325, -71.6035

Split Complementary

Split-complementary colors differ from the complementary color scheme. The scheme consists of three colors, the original color and two neighbors of the complement color.



133.5780, 39.6480, -117.1479



166.3540, -3.1325, 71.6035



144.8680, -10.2879, -60.3972

Square

The Square scheme is like the rectangle color scheme, but the four colors are evenly spaced on the color wheel.



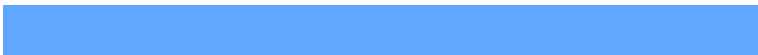
166.3540, -3.1325, 71.6035



159.6770, -43.7178, 22.2083



129.7360, 19.8502, -113.7785



155.8030, 48.9041, -52.4472

Rectangle

The Rectangle color scheme consists of four colors that form a rectangle on the color wheel.



166.3540, -3.1325, 71.6035



163.2100, -35.1065, 60.3288



129.7360, 19.8502, -113.7785



133.8520, 50.8520, -117.3882

Sweetspot

The Sweet Spot groups the original color and five complimentary colors.



166.3540, -3.1325, 71.6035



229.5020, -1.2335, 22.3617



165.9210, 40.4649, 41.2883



112.5610, -0.7696, 13.5400



0.0000, 0.0000, 0.0000



128.0000, 0.0000, 0.0000

Same Dimension

The Same Dimension uses a secret algorithm to generate beautiful new colors.



166.3540, -3.1325, 71.6035



154.5240, -4.2023, 88.1175



177.7400, -25.5078, 61.6180



116.3430, -0.1691, 7.5922



62.5530, -4.7096, 110.8940



20.1770, -1.5663, 35.8018

Inverse Universe

The Inverse Universe completely reimagines the original color for something new.



166.3540, -3.1325, 71.6035



154.5240, -4.2023, 88.1175



196.2600, 25.5078, -61.6180



116.3430, -0.1691, 7.5922



62.5530, -4.7096, 110.8940



20.1770, -1.5663, 35.8018

Previews

White Background



This preview shows how the YUV color 166.3540, -3.1325, 71.6035 looks on a white background.

Color Contrast Check

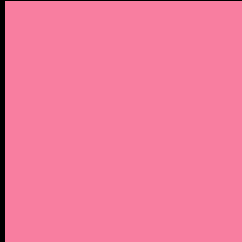
Large Text (above 18pt) WCAG AA × Fail

Any Text WCAG AA × Fail

Large Text (above 18pt) WCAG AAA × Fail

Any Text WCAG AAA × Fail

Black Background



This preview shows how the YUV color 166.3540, -3.1325, 71.6035 looks on a black background.

Color Contrast Check

Large Text (above 18pt) WCAG AA ✓ Pass

Any Text WCAG AA ✓ Pass

Large Text (above 18pt) WCAG AAA ✓ Pass

Any Text WCAG AAA ✓ Pass

If you want to check with other color combinations, try the [Color Contrast Checker](#).

YUV 166.3540, -3.1325, 71.6035

Background



This preview shows how black text looks on a background with the YUV color 166.3540, -3.1325, 71.6035.



This preview shows how white text looks on a background with the YUV color 166.3540, -3.1325,

Color Blindness Simulation

Color vision deficiency is a very complex topic, and I could not describe the different causes any better than Wikipedia does, so if you want to learn more, you should check out their [article about color blindness](#).

Dichromacy



Original Color

166.3540, -3.1325, 71.6035

Protanopia

165.7530, 8.0098, -2.4144

Deuteranopia

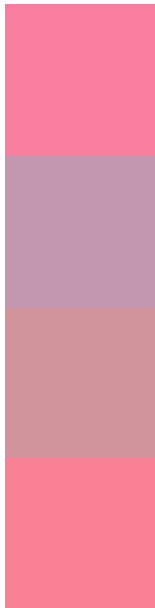
166.2040, -6.0166, 16.4841



Tritanopia

165.7100, -13.1680, 70.4143

Trichromacy



Original Color

166.3540, -3.1325, 71.6035

Protanomaly

165.8920, 3.9972, 24.6507

Deuteranomaly

166.2650, -5.0606, 36.6016

Tritanomaly

166.3340, -9.5317, 70.7441

Monochromacy



Original Color

166.3540, -3.1325, 71.6035

Achromatopsia

166.0000, 0.0000, 0.0000

Achromatomaly

165.9370, -0.9549, 26.3653

CSS Examples

Text

The CSS property to change the color of the text to YUV 166.3540, -3.1325, 71.6035 is called "color". The color property can be set on classes, ids or directly on the HTML element.

This example shows how text in the color `rgb(248, 126, 160)` looks like.

```
.text, #text, p{  
    color:rgb(248, 126, 160)  
}
```

If you want to add a text shadow in that color use the text-shadow property, you can generate a text shadow directly with our [CSS Text Shadow Generator](#).

Here you see how black text with a 4 pixel rgb(248, 126, 160) colored shadow looks like.

```
.shadow{ text-shadow: 4px 4px 2px rgb(248, 126, 160) }
```

Border

The CSS property to change the border of an element to YUV 166.3540, -3.1325, 71.6035 is called "border". The border property can be set on classes, ids or directly on the HTML element.

This example shows the color as border, it can be applied via the CSS property "border" or "border-color".

```
.border, #border, table{ border:4px solid rgb(248, 126, 160) }
```


If only the border color should be changed use the property `border-color`.

```
.border{ border-color:rgb(248, 126, 160) }
```

If you want to add a box shadow in that color use:

Here you see how a box with a 4 pixel `rgb(248, 126, 160)` colored shadow looks like.

```
.boxshadow{ -moz-box-shadow:4px 4px 4px  
4px rgb(248, 126, 160); -webkit-box-  
shadow:4px 4px 4px 4px rgb(248, 126, 160);  
box-shadow:4px 4px 4px 4px rgb(248, 126,  
160) }
```

Background

The CSS property to change the background color of an element to YUV 166.3540, -3.1325, 71.6035 is called "background". The background property can be set on classes, ids or directly on the HTML element.

```
.background, #background, body{  
background: rgb(248, 126, 160) }
```

If only the background color should be changed can be used:

```
.background{ background-color: rgb(248,  
126, 160) }
```

This example shows the color as background, it is applied via the CSS property "background".

To optimize and compress your CSS code, you can use our [online CSS compressor and optimizer](#) based on csstidy. If you want to create a linear or radial gradient as background or border, check our [CSS Gradient Generator](#).

Hey! You found this booklet interesting? Support Converting Colors with the new Membership Option!

The pro membership hides all ads, plus gives you double the colors in the color bucket, and more awesome pro features!

[Learn more, Memberships starting at \\$2.50/m!](#)

**Follow me
on Twitter!**

@ConvertingColor