

Converting Colors

YUV(166.4400, 2.7411, 7.5071)

Have a look what the booklet for
YUV(166.4400, 2.7411, 7.5071)
contains.

YUV(166.4400, 2.7411, 7.5071)	3
<i>Conversions</i>	4
<i>Details</i>	6
<i>Harmonies</i>	12
<i>Previews</i>	24
<i>Color Blindness Simulation</i>	28
<i>CSS Examples</i>	31

Color

**YUV(166.4400, 2.7411,
7.5071)**

Conversions

Conversions Part 1

Format	Color
Hex	AFA1AC
RGB	175, 161, 172
RGB Percent	69%, 63%, 67%
CMY	0.3137, 0.3686, 0.3255
CMYK	0.00, 0.08, 0.02, 0.31
HSL	313°, 8%, 66%
HSV	313°, 8%, 69%
XYZ	37.8705, 37.5823, 44.2878
YIQ	166.4400, 4.8130, 6.3890

Conversions

Conversions Part 2

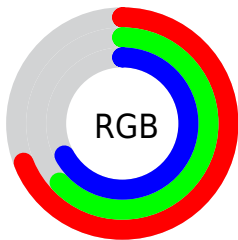
Format	Color
RYB	175, 161, 172
Decimal	11510188
CIELab	67.71, 7.10, -3.85
CIELCh	68, 8.077, 331.493
Yxy	37.5823, 0.3163, 0.3139
Android (android.graphics.Color)	4289700268 (0xFFAFA1AC)
YUV	166.4400, 2.7411, 7.5071
Hunter-Lab	61.3044, 2.9848, 0.0805

Details

The YUV color **166.4400, 2.7411, 7.5071** is a light color, and the websafe version is hex **999999**. A complement of this color would be **169.5600, -2.7411, -7.5071**, and the grayscale version is **166.0000, 0.0000, 0.0000**.

A 20% lighter version of the original color is **221.7390, 2.5937, 8.1219**, and **114.4400, 2.7411, 7.5071** is the 20% darker color. If you saturate the color by 10%, you get **156.0050, 5.9135, 16.6586**, and if you desaturate by 10%, it is **177.4620, -0.7208, -2.1592**.

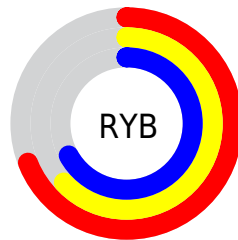
Distribution



Red (69%)

Green (63%)

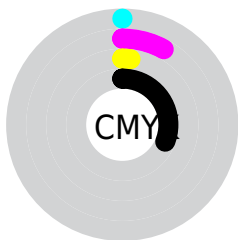
Blue (67%)



Red (69%)

Yellow (63%)

Blue (67%)

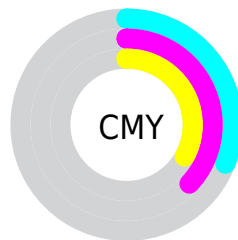


Cyan (0%)

Magenta (8%)

Yellow (2%)

Black (31%)



Cyan (31%)

Magenta (37%)

Yellow (33%)

Brightness & Saturation Gradients

These gradients show how the YUV color 166.4400, 2.7411, 7.5071 changes by changing the brightness by 10 percent. The first figure shows a shift by +10% for each color and the second figure -10%.

Similar to the brightness gradients but the following saturation gradients show a change of the YUV color 166.4400, 2.7411, 7.5071 by changing the saturation by 10% instead.

■ 166.4400, 2.7411,
7.5071

■ 166.4400, 2.7411,
7.5071

■ 255.0000, 0.0000,
0.0000

■ 140.0270, 2.4517,
6.9923

■ 221.7390, 2.5937,
8.1219

■ 114.4400, 2.7411,
7.5071

■ 248.5430, 3.1833,
5.6628

■ 90.0270, 2.4517,
6.9923

■ 66.6140, 2.1623,
6.4775

■ 44.3150, 2.3097,
5.8627

■ 23.9020, 2.0203,
5.3479

■ 0.0000, 0.0000,

0.0000

■ 166.4400, 2.7411,
7.5071

■ 166.4400, 2.7411,
7.5071

■ 156.0050, 5.9135,
16.6586

■ 177.4620, -0.7208,
-2.1592

■ 145.0970, 9.8122,
26.2249

■ 187.7830, -4.3300,
-11.2107

■ 134.6620, 12.9846,
35.3764

■ 198.8050, -7.7919,
-20.8770

■ 123.6400, 16.4465,
45.0427

■ 209.2400,
-10.9643, -30.0285

■ 113.2050, 19.6189,
54.1942

■ 220.2620,
-14.4262, -39.6948

■ 102.2970, 23.5176,
63.7605

■ 224.1260,
-14.8521, -43.0835

■ 91.8620, 26.6900,
72.9120

■ 224.5820,
-13.1049, -43.4834

■ 80.8400, 30.1519,
82.5783

■ 225.0380,
-11.3577, -43.8833

■ 70.4050, 33.3243,
91.7298

■ 225.4940, -9.6105,
-44.2832

Harmonies

Analogous

The Analogous color harmony consists of three colors that are next to each other on the color wheel.



165.7920, 5.5255, 1.0594



166.4400, 2.7411, 7.5071



166.5500, -0.7641, 11.7957

Triad

The Triadic color harmony groups three colors that are evenly spaced from another and form a triangle on the color wheel.



166.4400, 2.7411, 7.5071



165.0840, -7.4364, 5.1883



162.7640, 4.5533, -13.8250

Complementary

The Complementary color scheme is a pair of colors which are on the opposite of each other on the color wheel.



166.4400, 2.7411, 7.5071



169.5600, -2.7411, -7.5071

Split Complementary

Split-complementary colors differ from the complementary color scheme. The scheme consists of three colors, the original color and two neighbors of the complement color.



162.5640, 1.2009, -11.8956



166.4400, 2.7411, 7.5071



163.7950, -5.8149, -1.5742

Square

The Square scheme is like the rectangle color scheme, but the four colors are evenly spaced on the color wheel.



166.4400, 2.7411, 7.5071



165.3450, -6.5791, 10.2214



163.2610, -2.5937, -8.1219



163.9430, 6.4371, -11.3510

Rectangle

The Rectangle color scheme consists of four colors that form a rectangle on the color wheel.



166.4400, 2.7411, 7.5071



166.2790, -3.0955, 12.9103



163.2610, -2.5937, -8.1219



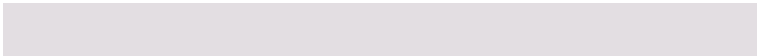
162.5360, 3.6798, -13.6251

Sweetspot

The Sweet Spot groups the original color and five complimentary colors.



166.4400, 2.7411, 7.5071



223.9510, 1.0102, 2.6740



163.4930, 5.6730, 0.4446



113.1250, 0.4314, 1.6444



242.0000, 0.0000, 0.0000



115.0000, 0.0000, 0.0000

Same Dimension

The Same Dimension uses a secret algorithm to generate beautiful new colors.



166.4400, 2.7411, 7.5071



212.9290, 4.4720, 12.3403



165.6420, -0.3165, 8.2070



81.4890, 1.7309, 4.8331



58.3020, 29.4311, 80.4191



8.9290, 4.4720, 12.3403

Inverse Universe

The Inverse Universe completely reimagines the original color for something new.



166.4400, 2.7411, 7.5071



212.9290, 4.4720, 12.3403



170.3580, 0.3165, -8.2070



81.4890, 1.7309, 4.8331



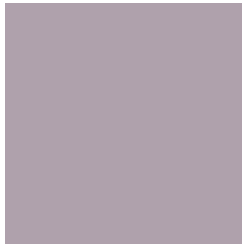
58.3020, 29.4311, 80.4191



8.9290, 4.4720, 12.3403

Previews

White Background



This preview shows how the YUV color 166.4400, 2.7411, 7.5071 looks on a white background.

Color Contrast Check

Large Text (above 18pt) WCAG AA × Fail

Any Text WCAG AA × Fail

Large Text (above 18pt) WCAG AAA × Fail

Any Text WCAG AAA × Fail

Black Background



This preview shows how the YUV color 166.4400, 2.7411, 7.5071 looks on a black background.

Color Contrast Check

Large Text (above 18pt) WCAG AA ✓ Pass

Any Text WCAG AA ✓ Pass

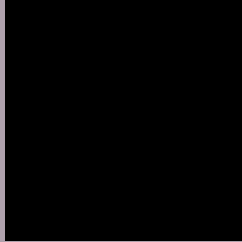
Large Text (above 18pt) WCAG AAA ✓ Pass

Any Text WCAG AAA ✓ Pass

If you want to check with other color combinations, try the [Color Contrast Checker](#).

YUV 166.4400, 2.7411, 7.5071

Background



This preview shows how black text looks on a background with the YUV color 166.4400, 2.7411, 7.5071.



This preview shows how white text looks on a background with the YUV color 166.4400, 2.7411,

Color Blindness Simulation

Color vision deficiency is a very complex topic, and I could not describe the different causes any better than Wikipedia does, so if you want to learn more, you should check out their [article about color blindness](#).

Dichromacy



Original Color

166.4400, 2.7411, 7.5071

Protanopia

165.4390, 4.2206, -0.3850

Deuteranopia

166.7500, 2.5882, 9.8663



Tritanopia

166.5540, 3.1779, 7.4071

Trichromacy



Original Color

166.4400, 2.7411, 7.5071

Protanomaly

165.9340, 3.4835, 2.6889

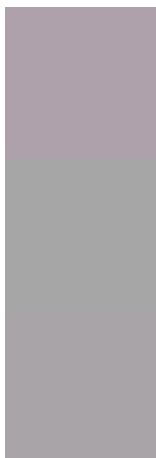
Deuteranomaly

166.4510, 2.7357, 9.2515

Tritanomaly

166.5540, 3.1779, 7.4071

Monochromacy



Original Color

166.4400, 2.7411, 7.5071

Achromatopsia

166.0000, 0.0000, 0.0000

Achromatomaly

165.9510, 1.0102, 2.6740

CSS Examples

Text

The CSS property to change the color of the text to YUV 166.4400, 2.7411, 7.5071 is called "color". The color property can be set on classes, ids or directly on the HTML element.

This example shows how text in the color `rgb(175, 161, 172)` looks like.

```
.text, #text, p{  
    color:rgb(175, 161, 172)  
}
```

If you want to add a text shadow in that color use the text-shadow property, you can generate a text shadow directly with our [CSS Text Shadow Generator](#).

Here you see how black text with a 4 pixel rgb(175, 161, 172) colored shadow looks like.

```
.shadow{ text-shadow: 4px 4px 2px rgb(175, 161, 172) }
```

Border

The CSS property to change the border of an element to YUV 166.4400, 2.7411, 7.5071 is called "border". The border property can be set on classes, ids or directly on the HTML element.

This example shows the color as border, it can be applied via the CSS property "border" or "border-color".

```
.border, #border, table{ border:4px solid rgb(175, 161, 172) }
```


If only the border color should be changed use the property `border-color`.

```
.border{ border-color:rgb(175, 161, 172) }
```

If you want to add a box shadow in that color use:

Here you see how a box with a 4 pixel `rgb(175, 161, 172)` colored shadow looks like.

```
.boxshadow{ -moz-box-shadow:4px 4px 4px  
4px rgb(175, 161, 172); -webkit-box-  
shadow:4px 4px 4px 4px rgb(175, 161, 172);  
box-shadow:4px 4px 4px 4px rgb(175, 161,  
172) }
```

Background

The CSS property to change the background color of an element to YUV 166.4400, 2.7411, 7.5071 is called "background". The background property can be set on classes, ids or directly on the HTML element.

```
.background, #background, body{  
background: rgb(175, 161, 172) }
```

If only the background color should be changed can be used:

```
.background{ background-color: rgb(175,  
161, 172) }
```

This example shows the color as background, it is applied via the CSS property "background".

To optimize and compress your CSS code, you can use our [online CSS compressor and optimizer](#) based on csstidy. If you want to create a linear or radial gradient as background or border, check our [CSS Gradient Generator](#).

Hey! You found this booklet interesting? Support Converting Colors with the new Membership Option!

The pro membership hides all ads, plus gives you double the colors in the color bucket, and more awesome pro features!

[Learn more, Memberships starting at \\$2.50/m!](#)

**Follow me
on Twitter!**

@ConvertingColor