

Converting Colors

YUV(166.5090, -11.5899,
77.6066)

Have a look what the booklet for
YUV(166.5090, -11.5899, 77.6066)
contains.

YUV(166.5090, -11.5899, 77.6066)	3
<i>Conversions</i>	4
<i>Details</i>	6
<i>Harmonies</i>	12
<i>Previews</i>	24
<i>Color Blindness Simulation</i>	28
<i>CSS Examples</i>	31

Color

**YUV(166.5090, -11.5899,
77.6066)**

Conversions

Conversions Part 1

Format	Color
Hex	FF7E8F
RGB	255, 126, 143
RGB Percent	100%, 49%, 56%
CMY	0.0000, 0.5059, 0.4392
CMYK	0.00, 0.51, 0.44, 0.00
HSL	352°, 100%, 75%
HSV	352°, 51%, 100%
XYZ	53.6588, 38.1649, 30.5250
YIQ	166.5090, 71.4270, 32.6350

Conversions

Conversions Part 2

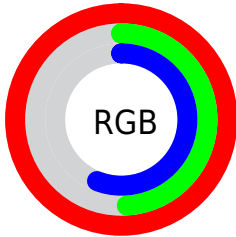
Format	Color
R_{YB}	255, 126, 143
Decimal	16744079
CIE _{Lab}	68.14, 50.56, 14.18
CIE _{LCh}	68, 52.510, 15.662
Yxy	38.1649, 0.4386, 0.3119
Android (android.graphics.Color)	4294934159 (0xFFFF7E8F)
YUV	166.5090, -11.5899, 77.6066
Hunter-Lab	61.7777, 46.9302, 13.9486

Details

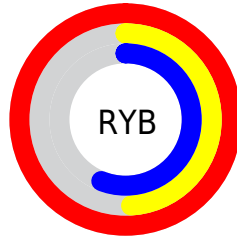
The YUV color **166.5090, -11.5899, 77.6066** is a light color, and the websafe version is hex **FF9999**. A complement of this color would be **214.4910, 11.5899, -77.6066**, and the grayscale version is **167.0000, 0.0000, 0.0000**.

A 20% lighter version of the original color is **205.5370, -4.2087, 43.3791**, and **110.8720, -8.8109, 72.9033** is the 20% darker color. If you saturate the color by 10%, you get **149.3260, -13.9647, 92.6761**, and if you desaturate by 10%, it is **184.2790, -9.5045, 62.0223**.

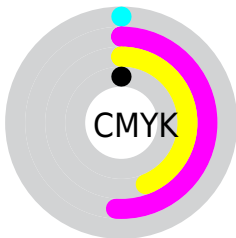
Distribution



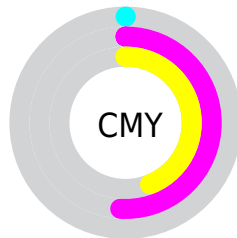
- Red (100%)
- Green (49%)
- Blue (56%)



- Red (100%)
- Yellow (49%)
- Blue (56%)



- Cyan (0%)
- Magenta (51%)
- Yellow (44%)
- Black (0%)



- Cyan (0%)
- Magenta (51%)
- Yellow (44%)

Brightness & Saturation Gradients

These gradients show how the YUV color 166.5090, -11.5899, 77.6066 changes by changing the brightness by 10 percent. The first figure shows a shift by +10% for each color and the second figure -10%.

Similar to the brightness gradients but the following saturation gradients show a change of the YUV color 166.5090, -11.5899, 77.6066 by changing the saturation by 10% instead.

166.5090,
-11.5899, 77.6066

166.5090,
-11.5899, 77.6066

255.0000, 0.0000,
0.0000

138.4270,
-10.5635, 75.0475

205.5370, -4.2087,
43.3791

110.8720, -8.8109,
72.9033

225.1650, -0.0813,
26.1653

83.0290, -6.9163,
71.8886

245.3800, 3.7567,
8.4367

49.2450, -1.1068,
75.2071

34.7720, -3.8316,
62.4670

23.6210, -11.6452,
48.5674

15.7760, -6.7916,

31.7684

■ 0.0000, 0.0000,
0.0000

■ 166.5090,
-11.5899, 77.6066

■ 166.5090,
-11.5899, 77.6066

■ 149.3260,
-13.9647, 92.6761

■ 184.2790, -9.5045,
62.0223

■ 131.5560,
-16.0501, 108.2604

■ 201.4620, -7.1298,
46.9528

■ 113.7860,
-18.1355, 123.8447

■ 219.2320, -5.0444,
31.3685

■ 96.4890, -20.9471,
139.0141

■ 236.5290, -2.2328,
16.1991

■ 80.1210, -22.7377,
153.3689

■ 254.2990, -0.1474,
0.6148

255.0000, 0.0000,
0.0000

Harmonies

Analogous

The Analogous color harmony consists of three colors that are next to each other on the color wheel.



169.2680, 10.7139, 63.7860



166.5090, -11.5899, 77.6066



165.0630, -32.0761, 68.3507

Triad

The Triadic color harmony groups three colors that are evenly spaced from another and form a triangle on the color wheel.



166.5090, -11.5899, 77.6066



152.5760, -27.3990, -32.0772



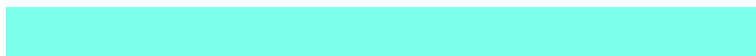
133.5560, 59.8719, -117.1286

Complementary

The Complementary color scheme is a pair of colors which are on the opposite of each other on the color wheel.



166.5090, -11.5899, 77.6066



214.4910, 11.5899, -77.6066

Split Complementary

Split-complementary colors differ from the complementary color scheme. The scheme consists of three colors, the original color and two neighbors of the complement color.



136.3310, 47.6578, -119.5623



166.5090, -11.5899, 77.6066



130.3170, 5.2667, -102.8870

Square

The Square scheme is like the rectangle color scheme, but the four colors are evenly spaced on the color wheel.



166.5090, -11.5899, 77.6066



158.8880, -43.8218, 8.8682



133.1900, 28.0073, -116.8076



163.6210, 45.0498, -29.4856

Rectangle

The Rectangle color scheme consists of four colors that form a rectangle on the color wheel.



166.5090, -11.5899, 77.6066



164.3310, -42.0682, 53.2067



133.1900, 28.0073, -116.8076



134.9750, 57.6933, -118.3731

Sweetspot

The Sweet Spot groups the original color and five complimentary colors.



166.5090, -11.5899, 77.6066



228.9320, -3.4175, 22.8616



174.1940, 39.8374, 55.9579



112.2190, -2.0800, 13.8399



0.0000, 0.0000, 0.0000



128.0000, 0.0000, 0.0000

Same Dimension

The Same Dimension uses a secret algorithm to generate beautiful new colors.



166.5090, -11.5899, 77.6066



148.0380, -13.8227, 93.8057



192.1600, -32.6169, 55.1107



119.0010, -1.4795, 7.8921



59.9590, -17.2348, 114.9230



20.0480, -5.9397, 38.5459

Inverse Universe

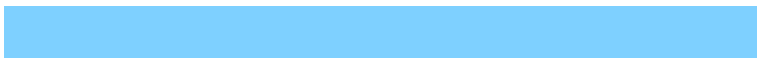
The Inverse Universe completely reimagines the original color for something new.



166.5090, -11.5899, 77.6066



148.0380, -13.8227, 93.8057



188.8400, 32.6169, -55.1107



119.0010, -1.4795, 7.8921



59.9590, -17.2348, 114.9230



20.0480, -5.9397, 38.5459

Previews

White Background



This preview shows how the YUV color 166.5090, -11.5899, 77.6066 looks on a white background.

Color Contrast Check

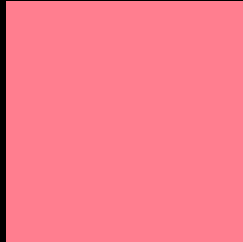
Large Text (above 18pt) WCAG AA × Fail

Any Text WCAG AA × Fail

Large Text (above 18pt) WCAG AAA × Fail

Any Text WCAG AAA × Fail

Black Background



This preview shows how the YUV color 166.5090, -11.5899, 77.6066 looks on a black background.

Color Contrast Check

Large Text (above 18pt) WCAG AA ✓ Pass

Any Text WCAG AA ✓ Pass

Large Text (above 18pt) WCAG AAA ✓ Pass

Any Text WCAG AAA ✓ Pass

If you want to check with other color combinations, try the [Color Contrast Checker](#).

YUV 166.5090, -11.5899, 77.6066 Background



This preview shows how black text looks on a background with the YUV color 166.5090, -11.5899, 77.6066.



This preview shows how white text looks on a background with the YUV color 166.5090, -11.5899, 77.6066.

Color Blindness Simulation

Color vision deficiency is a very complex topic, and I could not describe the different causes any better than Wikipedia does, so if you want to learn more, you should check out their [article about color blindness](#).

Dichromacy



Original Color

166.5090, -11.5899, 77.6066

Protanopia

166.9680, -1.4632, 2.6591

Deuteranopia

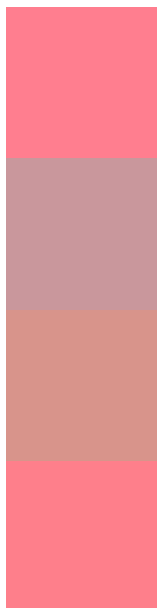
167.2450, -14.9108, 22.5871



Tritanopia

165.9990, -14.7895, 77.1769

Trichromacy



Original Color

166.5090, -11.5899, 77.6066

Protanomaly

166.5200, -5.1864, 30.2390

Deuteranomaly

167.3060, -13.9549, 42.7046

Tritanomaly

166.3410, -13.4791, 76.8769

Monochromacy



Original Color

166.5090, -11.5899, 77.6066

Achromatopsia

167.0000, 0.0000, 0.0000

Achromatomaly

166.7370, -4.3073, 28.2947

CSS Examples

Text

The CSS property to change the color of the text to YUV 166.5090, -11.5899, 77.6066 is called "color". The color property can be set on classes, ids or directly on the HTML element.

This example shows how text in the color `rgb(255, 126, 143)` looks like.

```
.text, #text, p{  
    color:rgb(255, 126, 143)  
}
```

If you want to add a text shadow in that color use the text-shadow property, you can generate a text shadow directly with our [CSS Text Shadow Generator](#).

Here you see how black text with a 4 pixel rgb(255, 126, 143) colored shadow looks like.

```
.shadow{ text-shadow: 4px 4px 2px rgb(255, 126, 143) }
```

Border

The CSS property to change the border of an element to YUV 166.5090, -11.5899, 77.6066 is called "border".

The border property can be set on classes, ids or directly on the HTML element.

This example shows the color as border, it can be applied via the CSS property "border" or "border-color".

```
.border, #border, table{ border:4px solid rgb(255, 126, 143) }
```


If only the border color should be changed use the property `border-color`.

```
.border{ border-color:rgb(255, 126, 143) }
```

If you want to add a box shadow in that color use:

Here you see how a box with a 4 pixel `rgb(255, 126, 143)` colored shadow looks like.

```
.boxshadow{ -moz-box-shadow:4px 4px 4px  
4px rgb(255, 126, 143); -webkit-box-  
shadow:4px 4px 4px 4px rgb(255, 126, 143);  
box-shadow:4px 4px 4px 4px rgb(255, 126,  
143) }
```

Background

The CSS property to change the background color of an element to YUV 166.5090, -11.5899, 77.6066 is called "background". The background property can be set on classes, ids or directly on the HTML element.

```
.background, #background, body{  
background: rgb(255, 126, 143) }
```

If only the background color should be changed can be used:

```
.background{ background-color: rgb(255,  
126, 143) }
```

This example shows the color as background, it is applied via the CSS property "background".

To optimize and compress your CSS code, you can use our [online CSS compressor and optimizer](#) based on csstidy. If you want to create a linear or radial gradient as background or border, check our [CSS Gradient Generator](#).

Hey! You found this booklet interesting? Support Converting Colors with the new Membership Option!

The pro membership hides all ads, plus gives you double the colors in the color bucket, and more awesome pro features!

[Learn more, Memberships starting at \\$2.50/m!](#)

**Follow me
on Twitter!**

@ConvertingColor